

NOTES:

1. ALL LUMBER SHALL BE DOUGLAS FIR #2 GRADE OR BETTER
2. LEDGER BOLTS SHALL BE 5/8" DIAMETER BY 5" LONG. BOLTS ARE TO BE STAGGERED.
3. USE OF THIS STANDARD IS LIMITED TO R-3 OCCUPANCIES (SINGLE-FAMILY DWELLINGS AND DUPLEX)

TABLE "A"

DECK JOIST SPAN

SIZE	SPACING	SPAN
2 X 6	12" o.c.	10'6"
	16" o.c.	9'2"
	24" o.c.	7'6"
2 X 8	12" o.c.	14'0"
	16" o.c.	12'0"
	24" o.c.	9'8"
2 X 10	16" o.c.	15'5"
	24" o.c.	12'6"
2 X 12	24" o.c.	15'4"
4 X 6	12" o.c.	16'0"
	16" o.c.	14'0"
	24" o.c.	11'5"
4 X 8	24" o.c.	15'0"
4 X 10	32" o.c.	15'0"

TABLE "C"

JOIST SPAN	BOLT SPACING 5/8" DIA 5" LONG
UP TO 8'	8" o.c.
UP TO 10'	7" o.c.
UP TO 12'	6" o.c.
UP TO 14'	5" o.c.
UP TO 16'	4" o.c.

TABLE "B"

JOIST SPAN	HEADER SPAN	MINIMUM HEADER SIZE	MINIMUM FOOTING SIZE
UP TO 16'	UP TO 6'	4 X 8	18" SQ. X 18" DEEP
UP TO 8'	UP TO 8'	4 X 8	18" SQ. X 18" DEEP
UP TO 16'	UP TO 8'	4 X 10	18" SQ. X 18" DEEP
UP TO 8'	UP TO 10'	4 X 10	18" SQ. X 18" DEEP
UP TO 14'	UP TO 10'	4 X 12	18" SQ. X 18" DEEP
UP TO 10'	UP TO 12'	6 X 10	24" SQ. X 18" DEEP
UP TO 12'	UP TO 14'	6 X 12	24" SQ. X 18" DEEP



BUILDING DIVISION

**BALCONY/DECK STANDARD
FOR SINGLE FAMILY DWELLINGS**

(760) 435-3950

300 N COAST HIGHWAY, OCEANSIDE, CA 92054

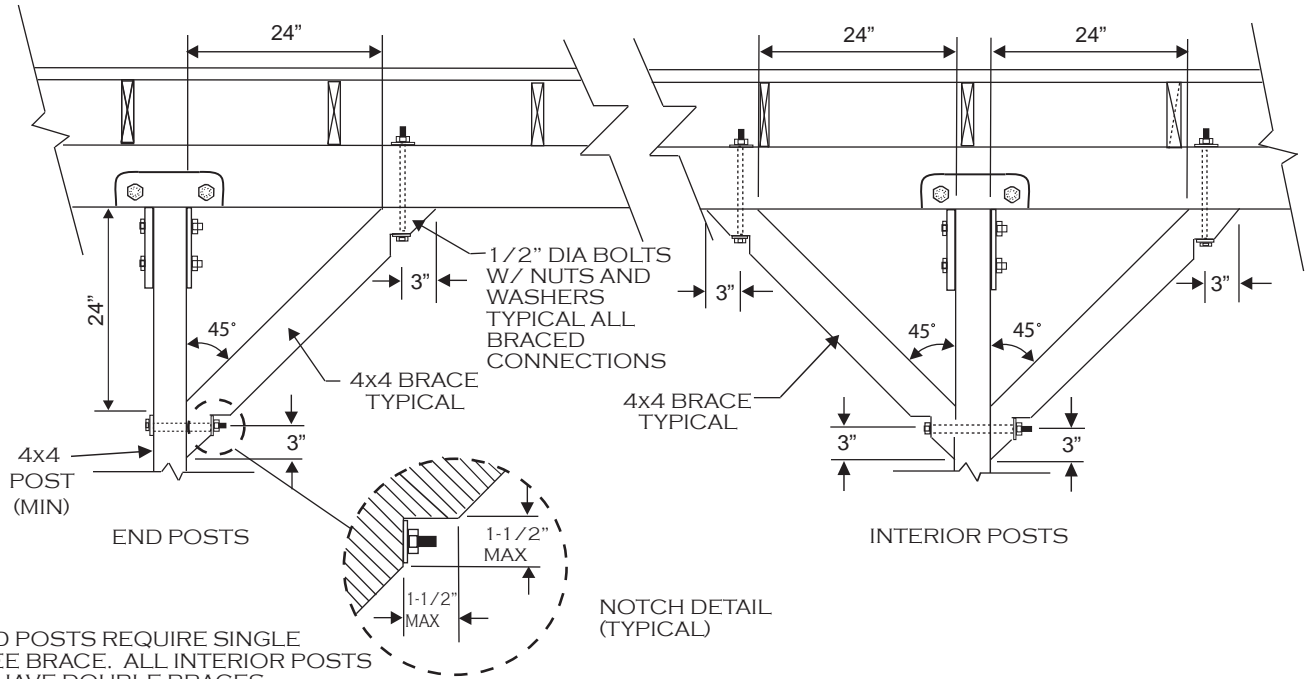
FAX: (760) 435-3926

3/12/08

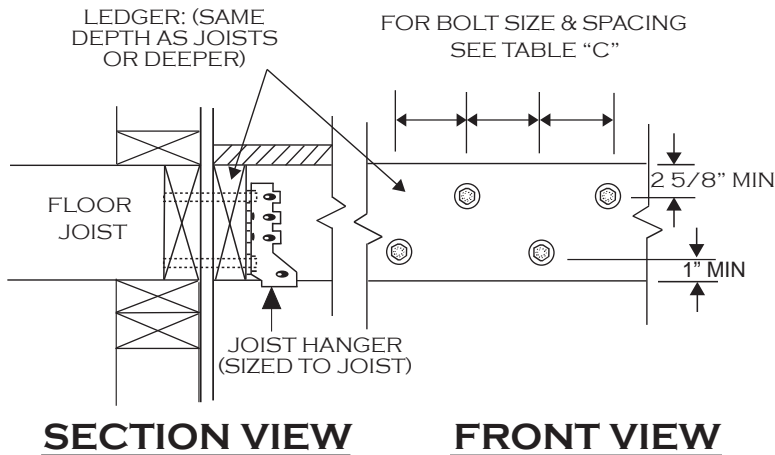
1 OF 4

KNEE BRACE DETAIL

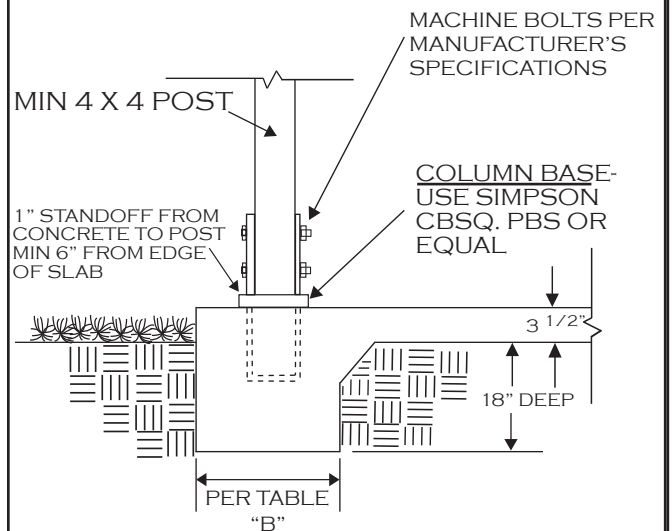
(A)



LEDGER DETAIL (B)



FOOTING DETAIL (C)



NOTE: THIS DECK CONNECTION DETAIL IS BASED ON THE ASSUMPTION THAT A MINIMUM 1-1/2" THICK WOOD MEMBER IS ADEQUATELY INSTALLED AT ALL EDGES OF THE 2ND FLOOR DIAPHRAGM. IF ANY OTHER MATERIAL IS USED, SUCH AS TJI JOISTS, A SPECIAL ENGINEERED DESIGN WILL BE REQUIRED. IT IS THE OWNER'S RESPONSIBILITY TO VERIFY THE PRESENCE OF THE APPROPRIATE RIM JOIST.



BUILDING DIVISION

BALCONY/DECK STANDARD FOR SINGLE FAMILY DWELLINGS

(760) 435-3950

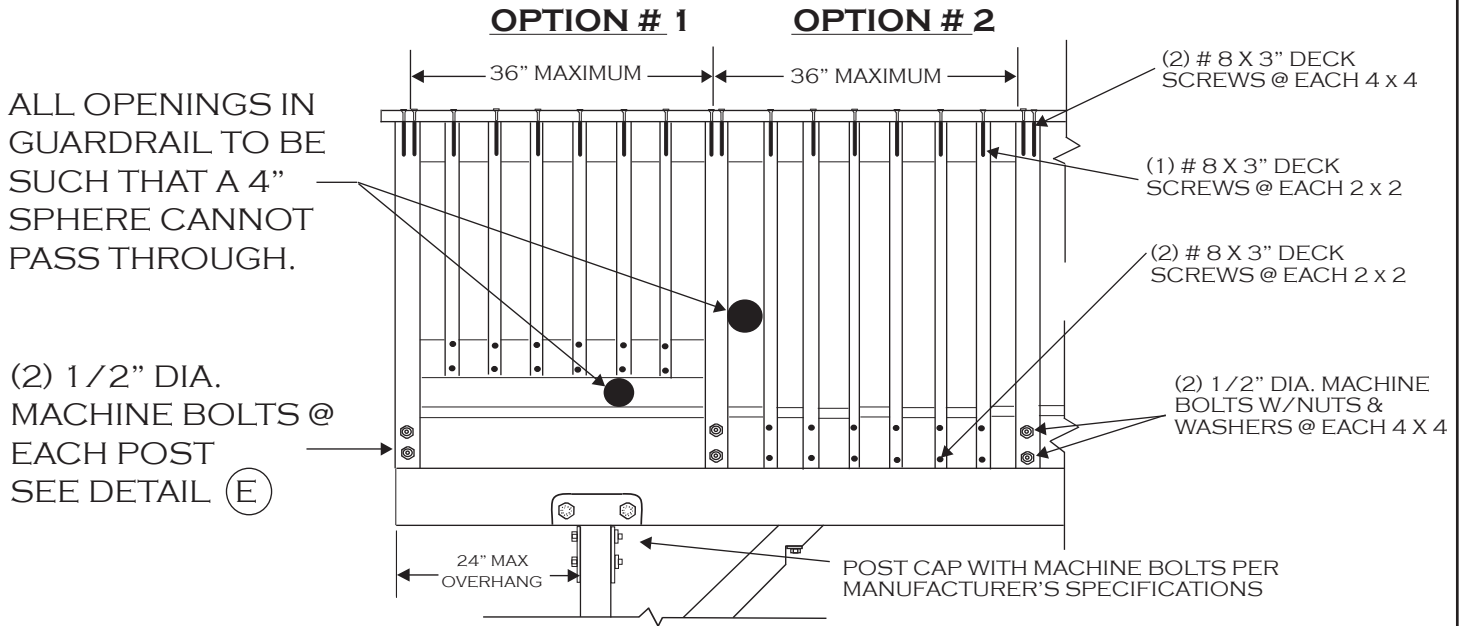
300 N COAST HIGHWAY, OCEANSIDE, CA 92054

FAX: (760) 435-3926

3/12/08

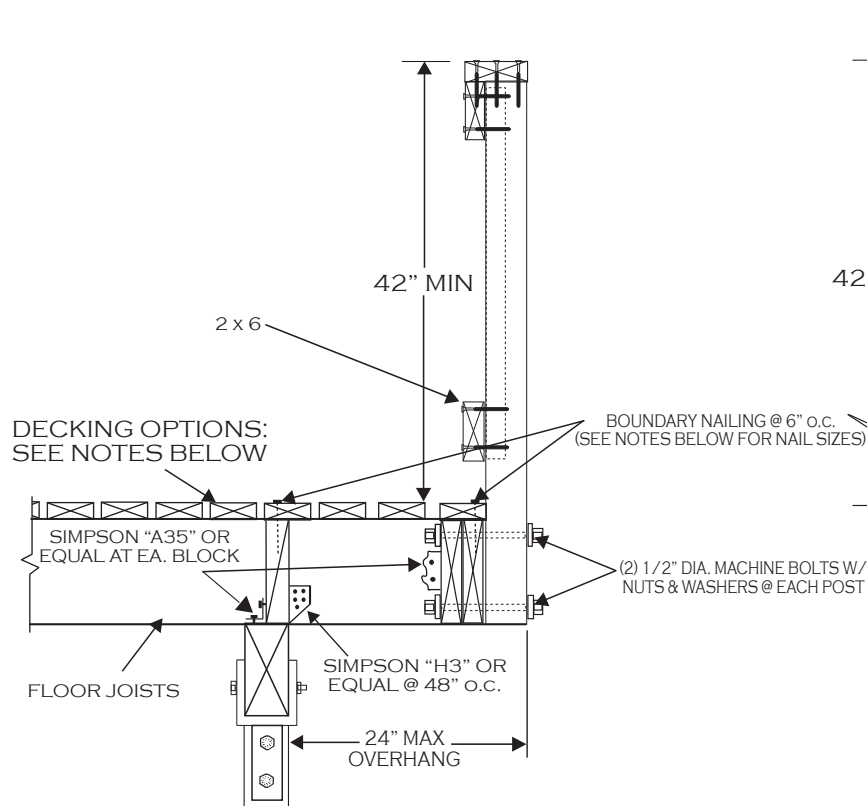
2 OF 4

RAILING, POST & BEAM DETAIL D

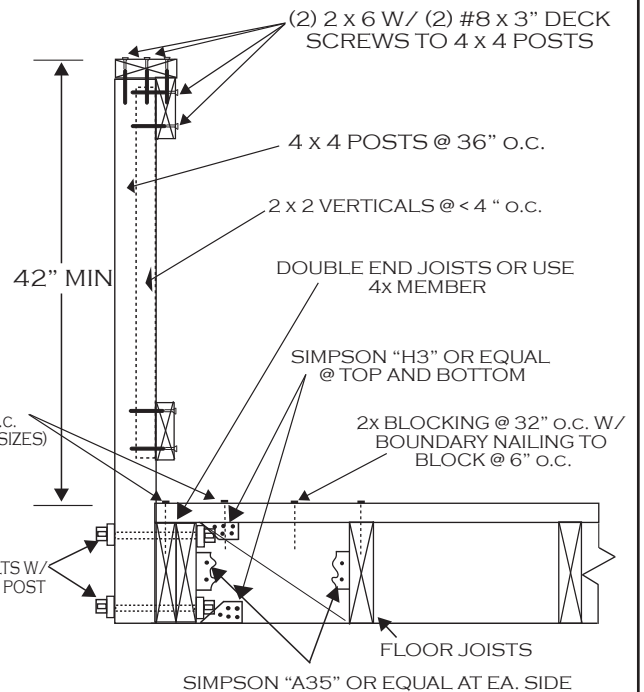


RAILING SECTION VIEWS E

GUARDRAIL PERPENDICULAR TO JOISTS



GUARDRAIL PARALLEL TO JOISTS



NOTE: DECKING OPTIONS ARE AS FOLLOWS:

1. 5/8" TONGUE AND GROOVE JOINTED PLYWOOD SECURED WITH 8d NAILS. ALL EDGE NAILING AT 6" o.c. MUST BE COVERED WITH AN APPROVED WEATHER RESISTIVE MATERIAL WALKING SURFACE AND SLOPED FOR DRAINAGE.

2. 2 x 6" DECKING SECURED W/ (2) 16d NAILS @ EA. JOIST.



BUILDING DIVISION

BALCONY/DECK STANDARD FOR SINGLE FAMILY DWELLINGS

(760) 435-3950

300 N COAST HIGHWAY, OCEANSIDE, CA 92054

FAX: (760) 435-3926

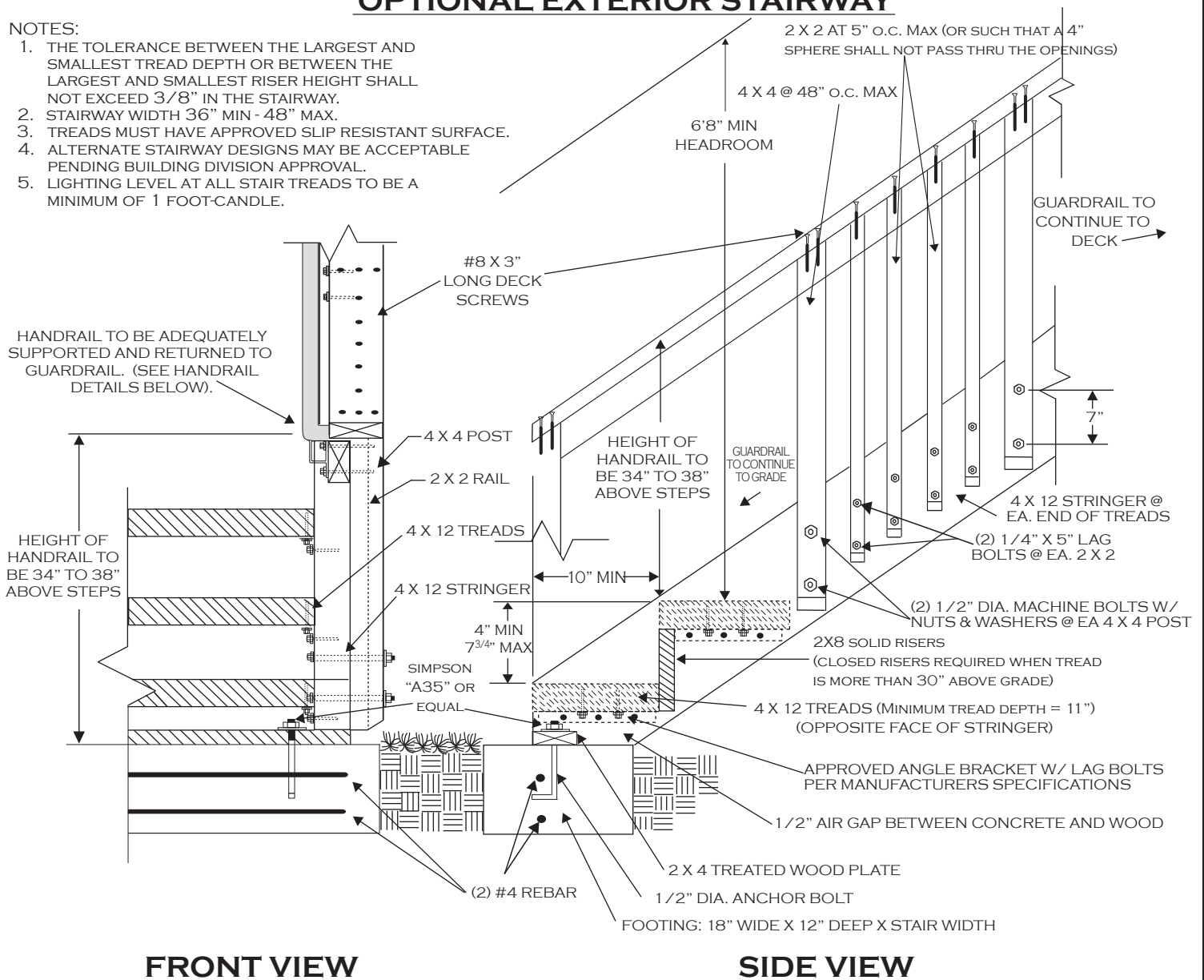
3/12/08

3 OF 4

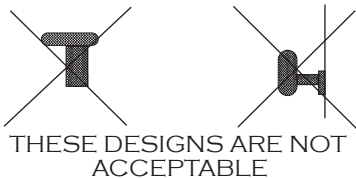
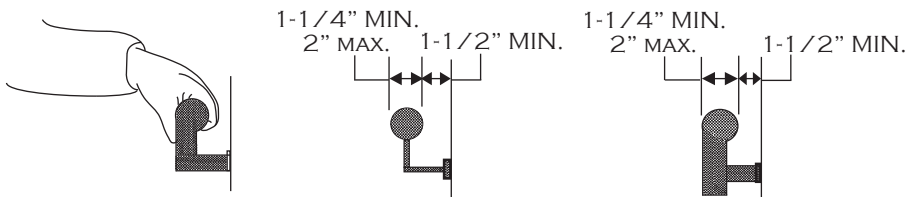
OPTIONAL EXTERIOR STAIRWAY


NOTES:

1. THE TOLERANCE BETWEEN THE LARGEST AND SMALLEST TREAD DEPTH OR BETWEEN THE LARGEST AND SMALLEST RISER HEIGHT SHALL NOT EXCEED $\frac{3}{8}$ " IN THE STAIRWAY.
2. STAIRWAY WIDTH 36" MIN - 48" MAX.
3. TREADS MUST HAVE APPROVED SLIP RESISTANT SURFACE.
4. ALTERNATE STAIRWAY DESIGNS MAY BE ACCEPTABLE PENDING BUILDING DIVISION APPROVAL.
5. LIGHTING LEVEL AT ALL STAIR TREADS TO BE A MINIMUM OF 1 FOOT-CANDLE.



HANDRAIL DETAILS



	BUILDING DIVISION		
	BALCONY/DECK STANDARD FOR SINGLE FAMILY DWELLINGS		
(760) 435-3950	300 N COAST HIGHWAY, OCEANSIDE, CA 92054		
Fax: (760) 435-3926	3/12/08		4 OF 4