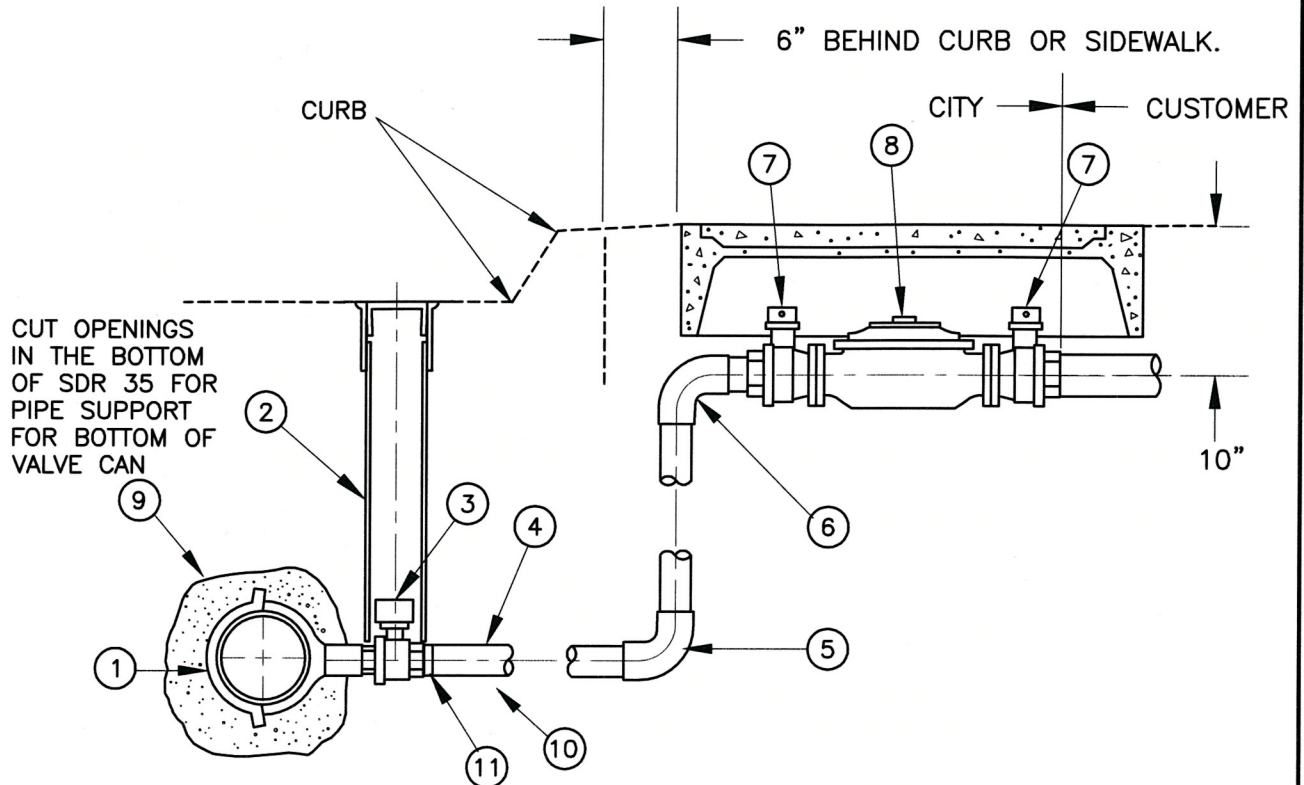


METER BOX & METERS INSTALLED BY CITY FORCES AT CONTRACTORS EXPENSE.



1. BRONZE SERVICE SADDLE PER SECTION 2.12.
2. VALVE BOX & COVER PER W-23 WITH BOTTOM SUPPORT.
3. 1 1/2" OR 2" M.I.P. X F.I.P. BALL VALVE W/2" G.V. OPERATING NUT ADAPTER PER SECTION 2.12.
4. 1 1/2" OR 2" TYPE "K" COPPER TUBING (RIGID).
5. 1 1/2" OR 2" COPPER TO COPPER 90° ELBOW.
6. 1 1/2" OR 2" COPPER TO M.I.P. 90° ELBOW.
7. 1 1/2" OR 2" F.I.P. X METER FLANGE BALL VALVE.
8. 1 1/2" OR 2" WATER METER.
9. BURIED COPPER TO BE ENCASED IN 6" NEUTRAL SAND.
10. BURIED COPPER TO BE WRAPPED IN 6 MIL POLY SLEEVE PER SECTION 2.12.
11. M.I.P. X COPPER ADAPTER.

* NOTE: WHEN REDUCING PIPE SIZE, NO BUSHINGS OR REDUCERS W/THREADS
COPPER REDUCERS WITH SILVER SOLDER. ALL JOINTS SILVER SOLDER.
WATER PORT HOLE CENTERS TO BE INSTALLED 10" BELOW TOP OF METER BOX.

Revision	By	Approved	Date	CITY OF OCEANSIDE	
11/06/00	kal				
09/16/02	DW			STANDARD 1 1/2" & 2" METER SERVICE	
07/08/04	AC				
06/04/07	AC	CB	7/1/07		
				CITY ENGINEER	Date
				STANDARD DRAWING NO.	W-5