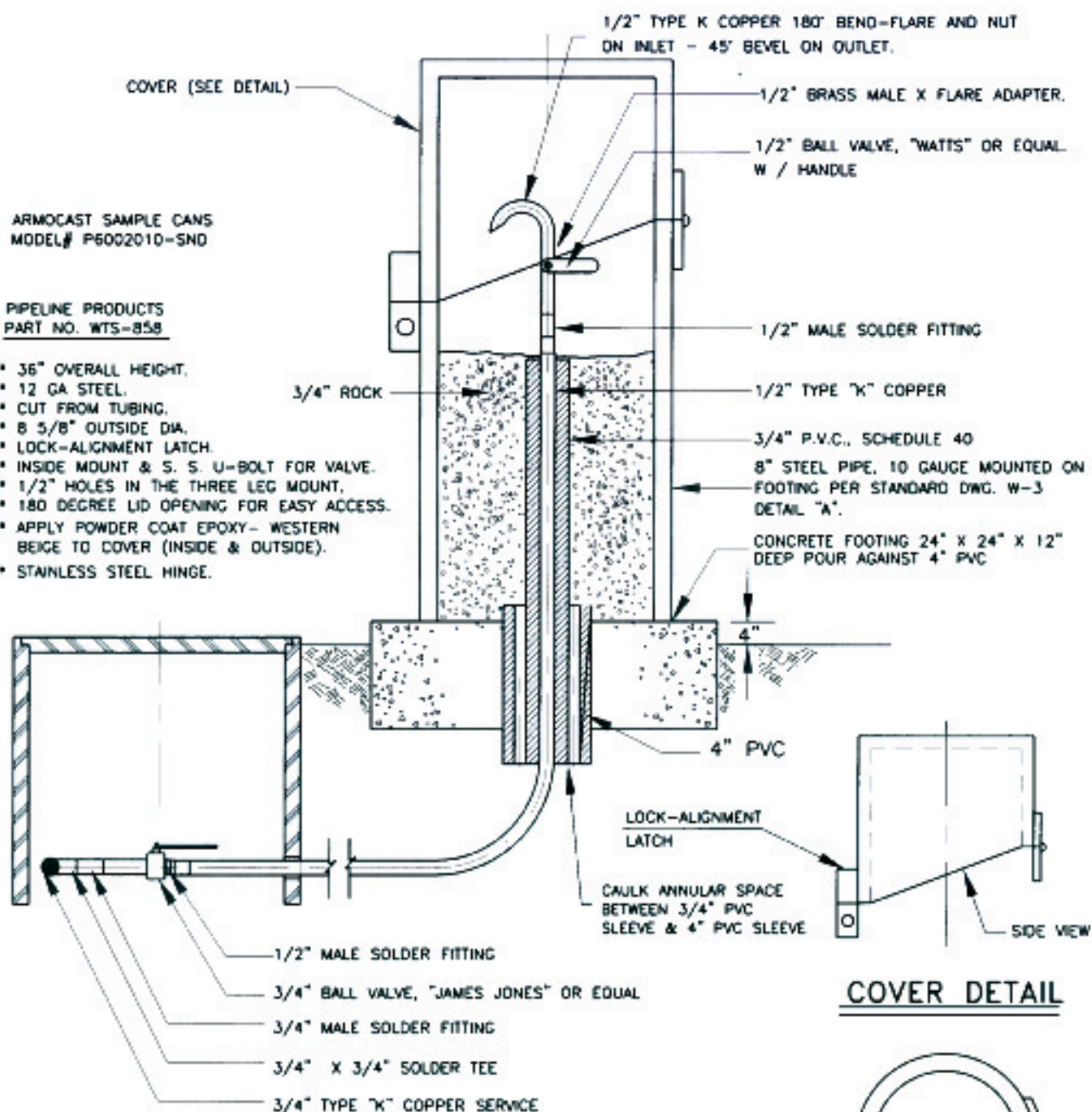


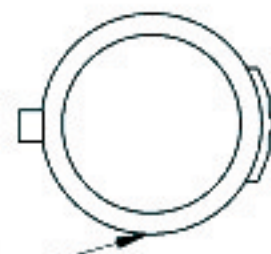
ARMOCAST SAMPLE CANS
MODEL# P6002010-SND

PIPELINE PRODUCTS
PART NO. WTS-858

- 36" OVERALL HEIGHT.
- 12 GA STEEL.
- CUT FROM TUBING.
- 8 5/8" OUTSIDE DIA.
- LOCK-ALIGNMENT LATCH.
- INSIDE MOUNT & S. S. U-BOLT FOR VALVE.
- 1/2" HOLES IN THE THREE LEG MOUNT.
- 180 DEGREE LID OPENING FOR EASY ACCESS.
- APPLY POWDER COAT EPOXY- WESTERN BEIGE TO COVER (INSIDE & OUTSIDE).
- STAINLESS STEEL HINGE.



COVER DETAIL



PLAN VIEW

NOTE: WATER SAMPLING LINE TEE TO BE INSTALLED
PRIOR TO METER.

NOTE: ALL COPPER JOINTS TO BE SILVER SOLDERED
ALL COPPER TO BE ENCASED IN 6 MIL POLY
SLEEVE PER SECTION 2.12 & 6\" OF NEUTRAL SAND.

Revision	By	Approved	Date	CITY OF OCEANSIDE WATER SAMPLING STATION	 CITY ENGINEER Date STANDARD DRAWING NO. W-8
06/06/01	DW				
10/16/02	DW				
08/29/04	AC				
06/04/07	AC				
092210	DW				