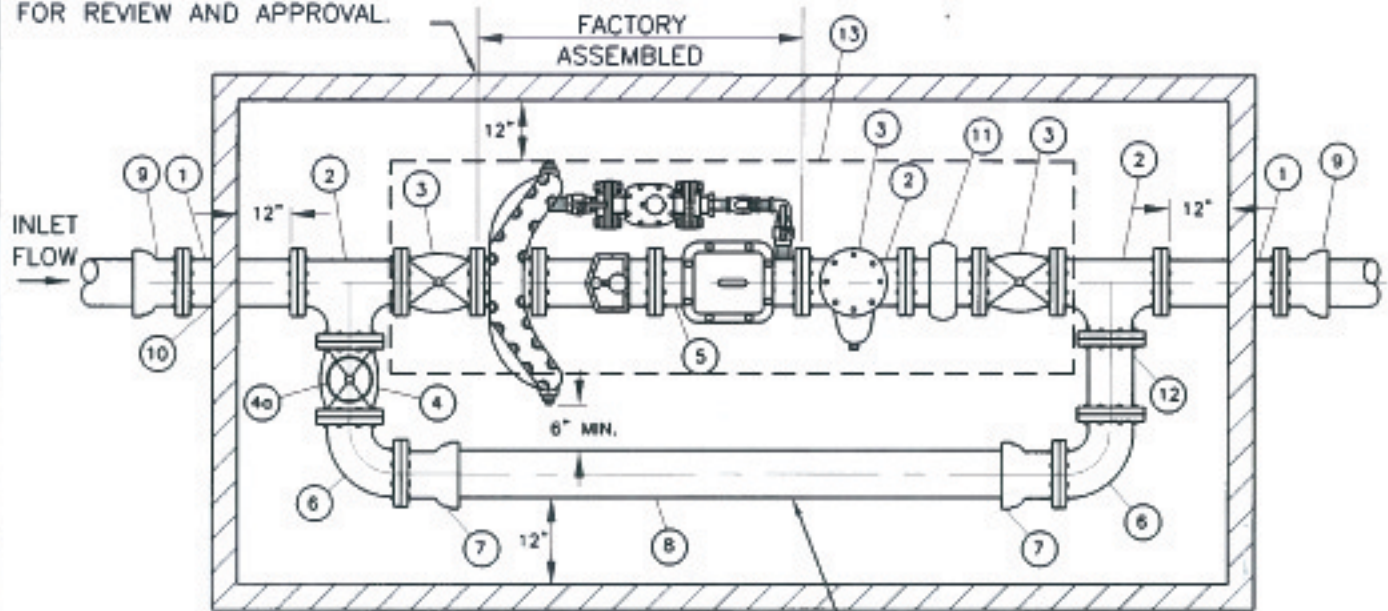


VAULT SHALL BE PRECAST. ALL CALCULATIONS AND SHOP DRAWINGS MUST BE SUBMITTED TO THE WATER UTILITIES DEPT. FOR REVIEW AND APPROVAL.




MATERIAL LIST

1. 18" LONG FLANGED DUCTILE IRON SPOOL.
2. FLANGED DUCTILE IRON TEE, WITH OUTLET.
3. FLANGED RESILIENT WEDGE (R/W) GATE VALVE, WITH FACTORY FUSION BONDED EPOXY INSIDE WEDGE TO BE RUBBER ENCAPSULATED DUCTILE IRON WITH 2" SQUARE OPERATING NUT.
4. RW GATE VALVE. EPOXY & WEDGE SAME AS #3. (CLOSED VALVE)
- 4a. PIPELINE PRODUCTS GVL-200 LOCKING GATE VALVE CAP. (LOCK TO BE PROVIDED BY WATER UTILITIES).
5. FACTORY ASSEMBLED COMPACT FIRE FLOW METER MANUFACTURED BY SENSUS.
6. 90° FLANGED DUCTILE IRON ELBOW.
7. FLANGED DUCTILE IRON SPOOL (L=VARIES)
8. PVC PIPE C900 CLASS 200
9. FLANGE X PUSH ON ADAPTER.
10. APPROVED SEALANT AROUND PIPE OPENINGS.
11. VICTAULIC COUPLING W/ 2 EACH 6" FLG X VIC GROOVE SPOOLS.
12. FLANGED SPOOL
13. BILCO 2 PIECE OR USF 2 PIECE ALUMINUM DIAMOND PLATE HATCH. THE HATCH MUST COVER THE LIMITS OF EITHER SIDE OF THE RWGV ON THE MAIN LINE. RATING OF HATCH WILL BE MADE ON A CASE BY CASE BASIS, APPROVED BY THE WATER UTILITIES DEPT.

BYPASS PIPE AND VALVES SHALL BE SAME SIZE AS METER. BYPASS VALVE #4 TO BE CLOSED AFTER INSTALLATION & LOCKING CAP INSTALLED. SEE 4.0

NOTE: VAULT DEPTH NOT TO EXCEED 5'-0" FROM TOP OF VAULT TO FLOOR.

Revision	By	Revision	By	CITY OF OCEANSIDE STANDARD FIRE FLOW MASTER METER	 CITY ENGINEER Date
10/22/02	DW				
08/06/04	AC				
04/13/05	DW				
06/04/07	AC				
09/22/10	DW				STANDARD DRAWING NO. W-9