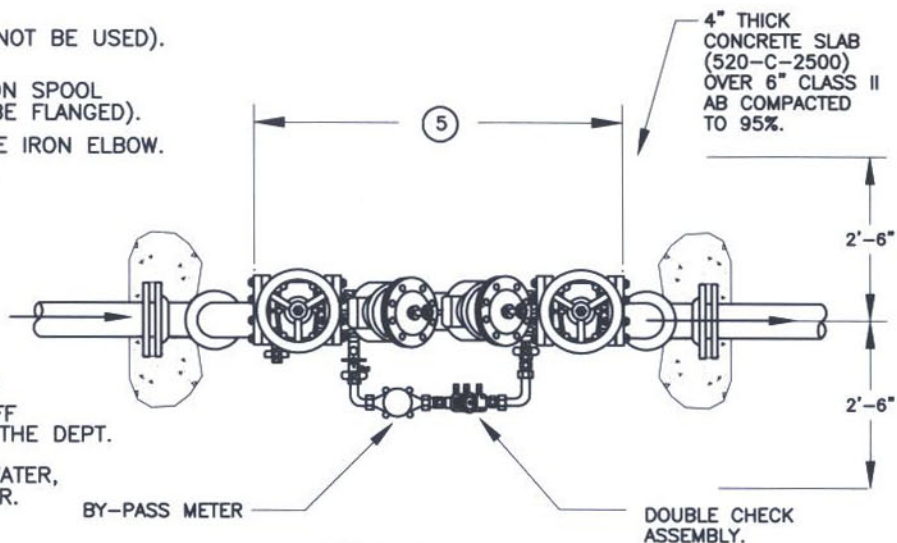


NOTES:

1. PUBLIC WATER MAIN.
2. 90°, DUCTILE IRON ELBOW: FLG X FLG;
FLG X PO;
(UNI-FLANGE SHALL NOT BE USED).
3. FLANGED DUCTILE IRON SPOOL
(BOTH ENDS SHALL BE FLANGED).
4. 90°, FLANGED DUCTILE IRON ELBOW.
5. FACTORY ASSEMBLED.

DOUBLE CHECK
DETECTOR CHECK
ASSEMBLY W/RESILIENT
SEATED OS&Y SHUT OFF
VALVES APPROVED BY THE DEPT.
OF HEALTH SERVICES,
OFFICE OF DRINKING WATER,
WITH A BY-PASS METER.



PLAN VIEW

THIS ASSEMBLY SHALL BE INSPECTED BY THE WATER UTILITIES DEPARTMENT. AFTER WATER UTILITIES DEPARTMENT'S APPROVAL ASSEMBLY SHALL BE TESTED BY A TESTER ON THE CITY'S APPROVED TESTER LIST. THE DEVELOPER/OWNER IS RESPONSIBLE FOR THE COST OF TESTING THE ASSEMBLY. THERE AFTER, THE ASSEMBLY SHALL BE TESTED ANNUALLY AT THE OWNER'S EXPENSE. THE TEST REPORT IS TO BE SUBMITTED TO THE CITY WATER UTILITIES DEPARTMENT. PHONE NUMBER 760-435-5862

Revision	By	Approved	Date
03/19/01	kal		
06/08/01	DW		
10/16/02	DW		
07/08/04	AC		

CITY OF OCEANSIDE

**DOUBLE CHECK - DETECTOR CHECK
ASSEMBLY**

Handwritten signature: M. Dwyer
CITY ENGINEER *8/4/04* Date
STANDARD
DRAWING NO. **W-14**