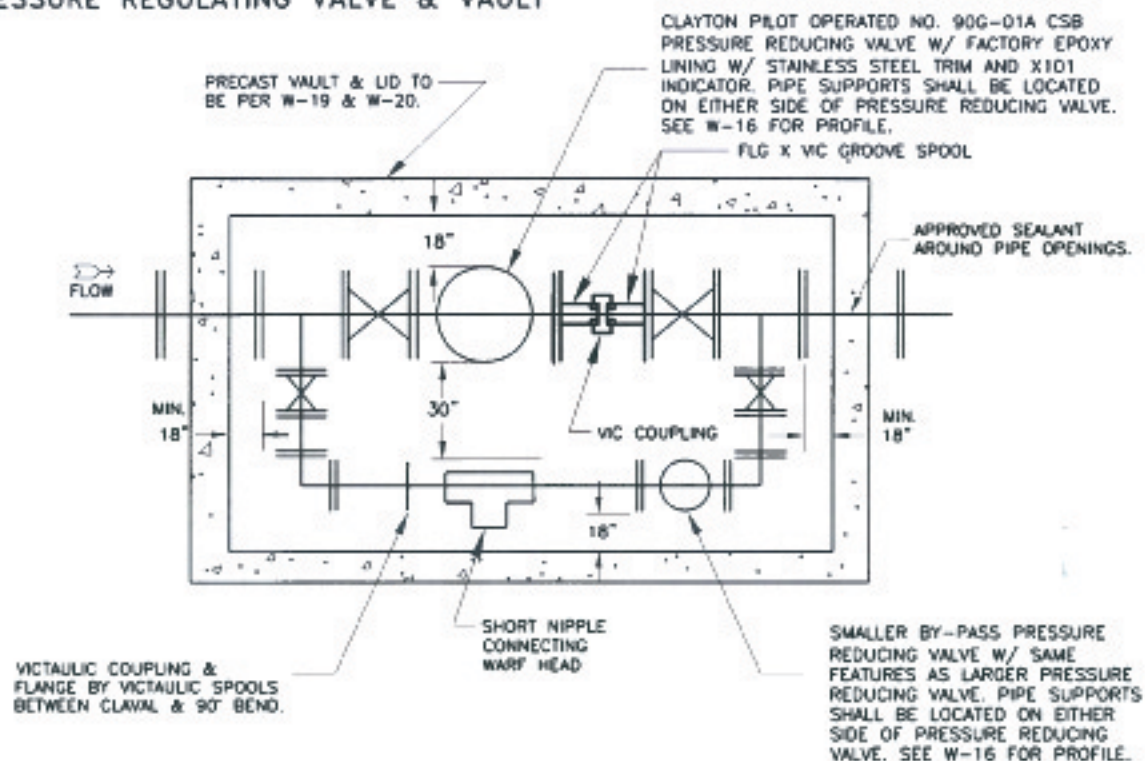


BASIC LAYOUT FOR A STANDARD PRESSURE REGULATOR OR PRESSURE REGULATING VALVE & VAULT



NOTES:

1. EACH PRESSURE REGULATOR STATION SHALL BE DESIGNED AND SUBMITTED FOR APPROVAL BY THE WATER UTILITIES DEPARTMENT ON A CASE BY CASE BASIS.
2. REGULATOR MUST BE PROVIDED WITH AN EJECTOR WITH TEST COCKS ON ALL VALVES, AND 3" OIL FILLED GAUGE (0-300 PSI), 3-D OR EQUAL.
3. REGULATOR AND ALL PIPING WITHIN THE VAULT SHALL BE PAINTED WITH ALUMINUM INDUSTRIAL PAINT. EXTERIOR SURFACES SHALL BE CLEANED AND PRIMED WHERE NECESSARY WITH SHERWIN WILLIAM PAINT, "DAPPER TAN SW 6144" COLOR, BASE COAT-SW MACROPOXY HS 646 APPLIED @ 5.0 TO 6.0 MILS; INTERMEDIATE COAT-SW MACROPOXY HS 646 APPLIED @ 5.0 TO 6.0 MILS.
4. COAT INTERIOR OF VAULT WITH SANCON 100 OR ZEBRON.
5. WATERPROOF EXTERIOR AS REQUIRED.
6. VALVE SUPPORTS PER W-18 TO BE INSTALLED AT BOTH ENDS OF BOTH PRESSURE REGULATORS.
7. MINIMUM 18" CLEARANCE FROM ALL VALVES & APPURTENANCES.
8. SCADA DESIGN MUST BE SUBMITTED TO WATER UTILITIES DEPT. FOR APPROVAL.

USE W-2

TEE - COMPANION FLANGE
-8" NIPPLE (BRASS);
3" OR 4" WARF HEAD
HEAD (BRASS)
(BRASS)-JAMES JONES
4" DIA.

| Revision | By | Approved | Date | CITY OF OCEANSIDE STANDARD PRESSURE REDUCING VALVE CONNECTION |  CITY ENGINEER Date |
|----------|-----|----------|------|---|---|
| 04/10/00 | kal | | | | |
| 06/11/01 | DW | | | | |
| 10/22/02 | DW | | | | |
| 07/16/04 | AC | | | | |
| 09/22/10 | DW | | | | STANDARD DRAWING NO. W-17 |