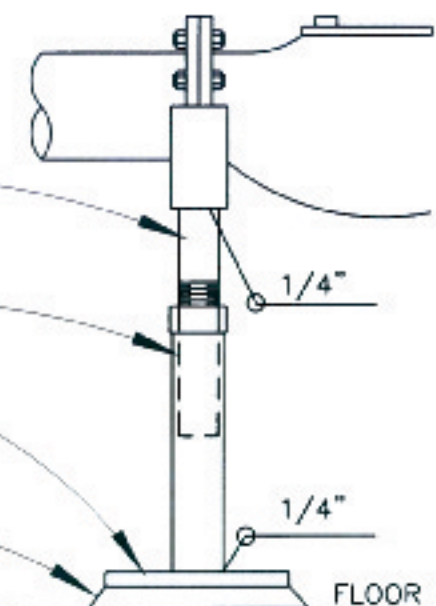


2" POLISHED
ALUMINUM

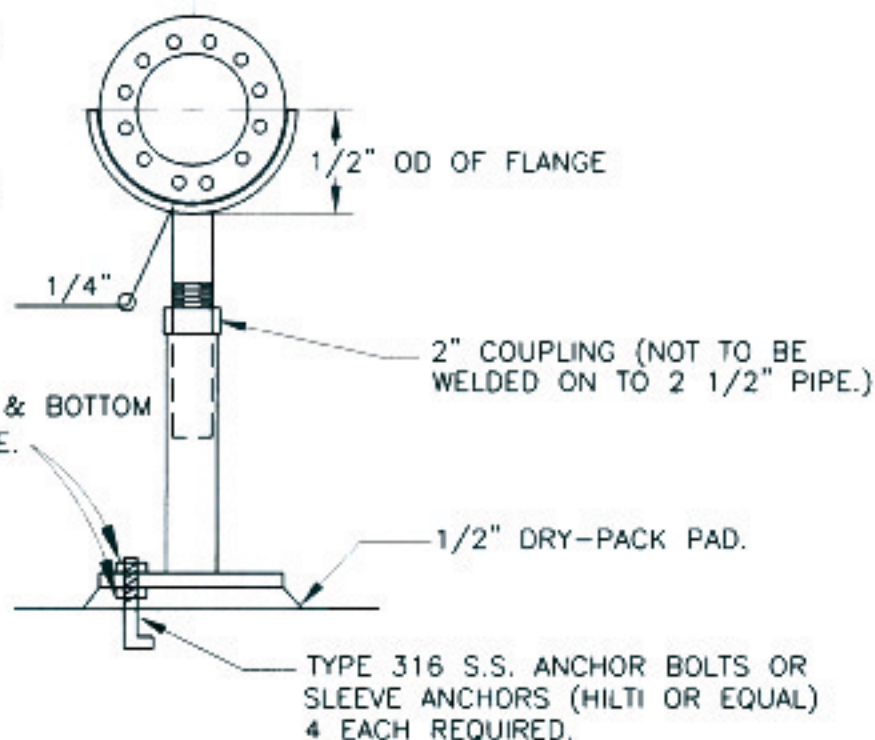
2 1/2" POLISHED
ALUMINUM

10" x 10" x 1/2" P.L.

BOTTOM OF SUPPORT
BASE 1/2" ABOVE
FLOOR - DRY PACK
VOID.



CRADLE SUPPORT THE
WIDTH OF BOTH FLANGES.
1/8" x 2" NEOPRENE
PAD PLACED BETWEEN
THE PIPE AND THE
CRADLE SUPPORT. NO
METAL TO METAL CONTACT
SHALL BE MADE.



NOTES:

1. PAINT PER W-17.
2. ADJUSTABLE PIPE SUPPORT
SHALL BE MANUFACTURED
BY GRINNEL, TOLCO, OR
APPROVED EQUAL.

VALVE SUPPORT DETAIL

NOT TO SCALE

| Revision | By | Approved | Date |
|----------|-----|----------|------|
| 11/08/00 | kal | | |
| 10/16/02 | CM | | |
| 07/12/04 | AC | | |
| 09/22/10 | CM | | |

CITY OF OCEANSIDE

VALVE SUPPORT

CITY ENGINEER Date

STANDARD
DRAWING NO. W-18