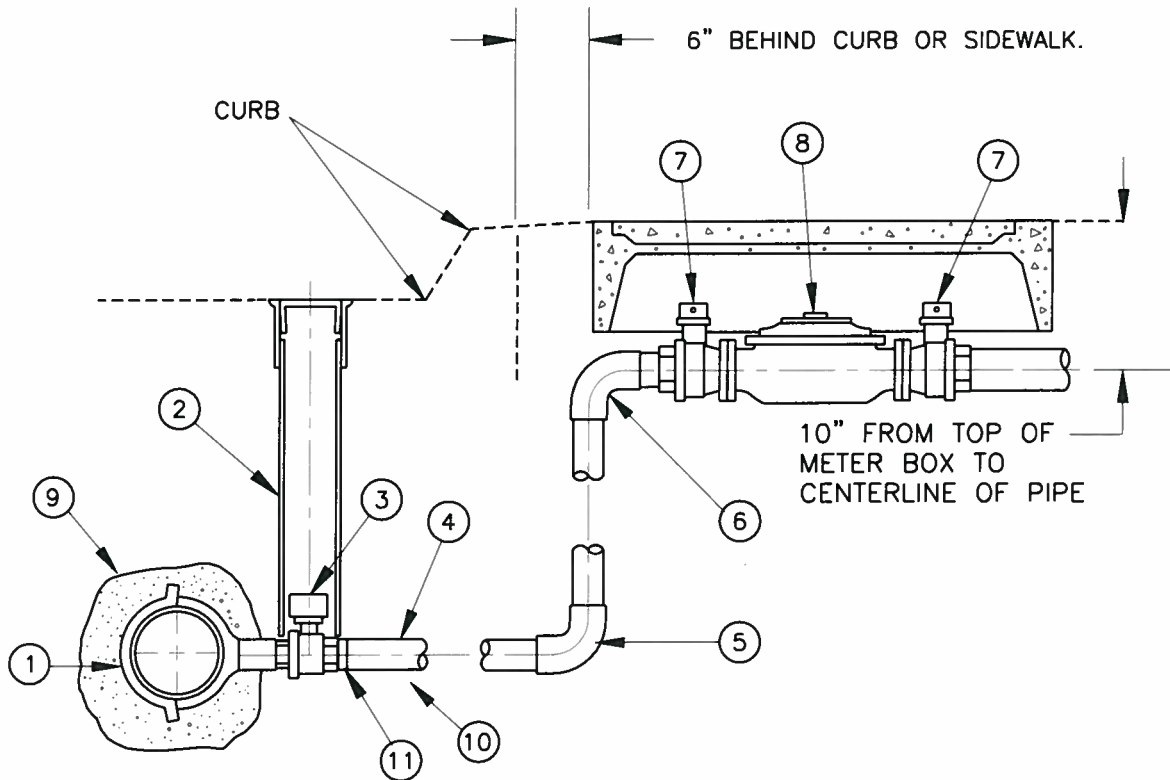


METER BOX & METERS INSTALLED BY CITY FORCES AT CONTRACTORS EXPENSE.



1. BRONZE SERVICE CLAMP JAMES JONES J-979 OR FORD 202-B, C900 PROVIDED WITH TWO FLATTED "U" BOLTS MADE OF DURONZE (SILICON BRONZE) OR SIMILAR WITH NEOPRENE SELF SEALING TAMPERED GASKET OR "O" RING.
2. VALVE BOX & COVER PER RW-15 WITH BOTTOM SUPPORT.
3. 1 1/2" OR 2" M.I.P. X F.I.P. BALL VALVE W/2" G.V. OPERATING NUT ADAPTER PER SECTION 4.5
4. 1 1/2" OR 2" TYPE "K" COPPER TUBING (RIGID).
5. 1 1/2" OR 2" COPPER TO COPPER 90° ELBOW.
6. 1 1/2" OR 2" COPPER TO M.I.P. 90° ELBOW.
7. 1 1/2" OR 2" FLANGED x SCREW BALL VALVE, JAMES JONES NO. J-1912 OR FORD BF-13.
- WITH RECLAIMED WATER (RW) TEE HEAD
8. 1 1/2" OR 2" RECLAIMED WATER METER.
9. BURIED COPPER TO BE ENCASED IN 6" NEUTRAL SAND
10. BURIED COPPER TO BE ENCASED IN 6 MIL POLY SLEEVE.
11. M.I.P. X COPPER ADAPTER.

NOTE: 1. WHEN REDUCING PIPE SIZE, NO BUSHINGS OR REDUCERS W/THREADS  
COPPER REDUCERS WITH SILVER SOLDER.  
2. IDENTIFICATION TAPE. CHRISTY'S MODEL TA-DT-02-PRW  
3. IDENTIFICATION NAME PLATE. CHRISTY'S MODEL 3800  
4. IDENTIFICATION TAGS. CHRISTY'S MODEL ID-MAX-P2-RCIP2  
5. PAINT ALL PIPING & VALVES INSIDE METER BOX OSHA 300 - PURPLE

Revision	By	Approved	Date	CITY OF OCEANSIDE	 9-2-09
11/06/00	kal				
08/05/04	AC			STANDARD 1 1/2" & 2" IRRIGATION SERVICE	STANDARD DRAWING NO. <b>RW-5</b>
07/06/09	DW		8/26/09		