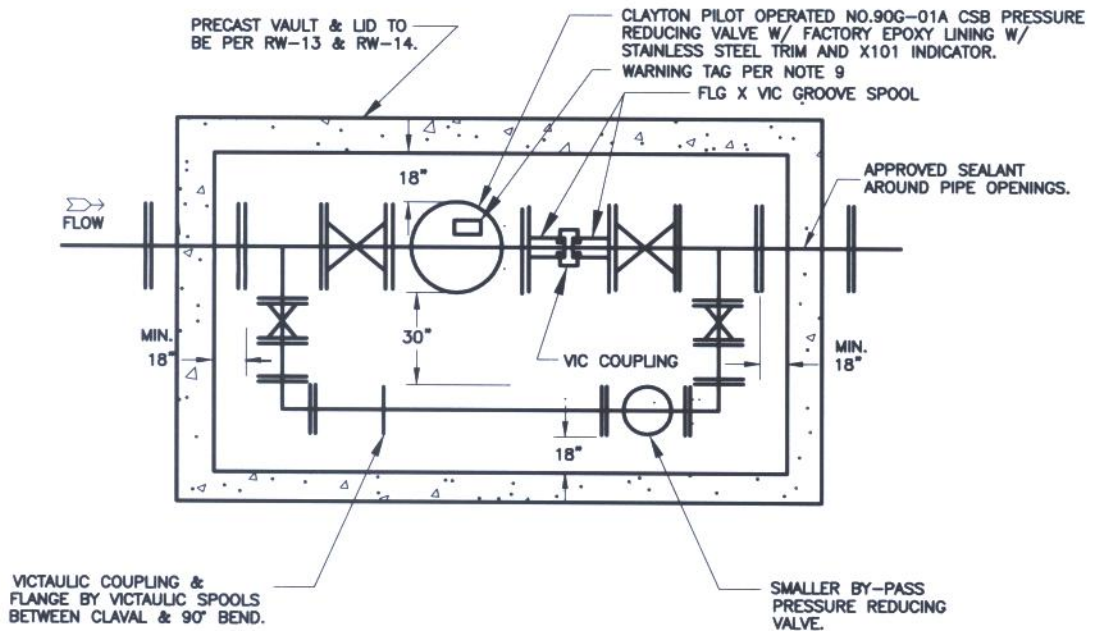


BASIC LAYOUT FOR A STANDARD PRESSURE REGULATOR OR PRESSURE REGULATING VALVE & VAULT



NOTES:

1. EACH PRESSURE REGULATOR STATION SHALL BE DESIGNED AND SUBMITTED FOR APPROVAL BY THE WATER UTILITIES DEPARTMENT ON A CASE BY CASE BASIS.
2. REGULATOR MUST BE PROVIDED WITH AN EJECTOR WITH TEST COCKS ON ALL VALVES, AND 3" OIL FILLED GAUGE (0-300 PSI), 3-D OR EQUAL.
3. REGULATOR AND ALL PIPING WITHIN THE VAULT SHALL BE PAINTED WITH ALUMINUM INDUSTRIAL PAINT. EXTERIOR SURFACES SHALL BE CLEANED AND PRIMED WHERE NECESSARY WITH AMERCOAT PRIMER NO. 25 AND PAINTED WITH TWO FINISH COATS OF OSHA 300 - PURPLE
4. COAT INTERIOR OF VAULT WITH SANCON 100 OR ZEBRON.
5. WATERPROOF EXTERIOR AS REQUIRED BY THE ENGINEER.
6. VALVE SUPPORTS PER RW-12 TO BE INSTALLED AT BOTH ENDS OF PRESSURE REGULATOR.
7. MINIMUM 18" CLEARANCE FROM ALL VALVES & APPURTENANCES.
8. SCADA DESIGN MUST BE SUBMITTED TO WATER UTILITIES DEPT. FOR APPROVAL.
9. WARNING TAGS SHALL BE CHRISTY'S MODEL 10-MAX-P2-RCIP2

Revision	By	Approved	Date	CITY OF OCEANSIDE	CITY ENGINEER <i>M. Dancy</i>
04/10/00	kal				
08/30/04	AC			PRESSURE REDUCING VALVE	8/8/15 Date
					STANDARD
					DRAWING NO.
					RW-11