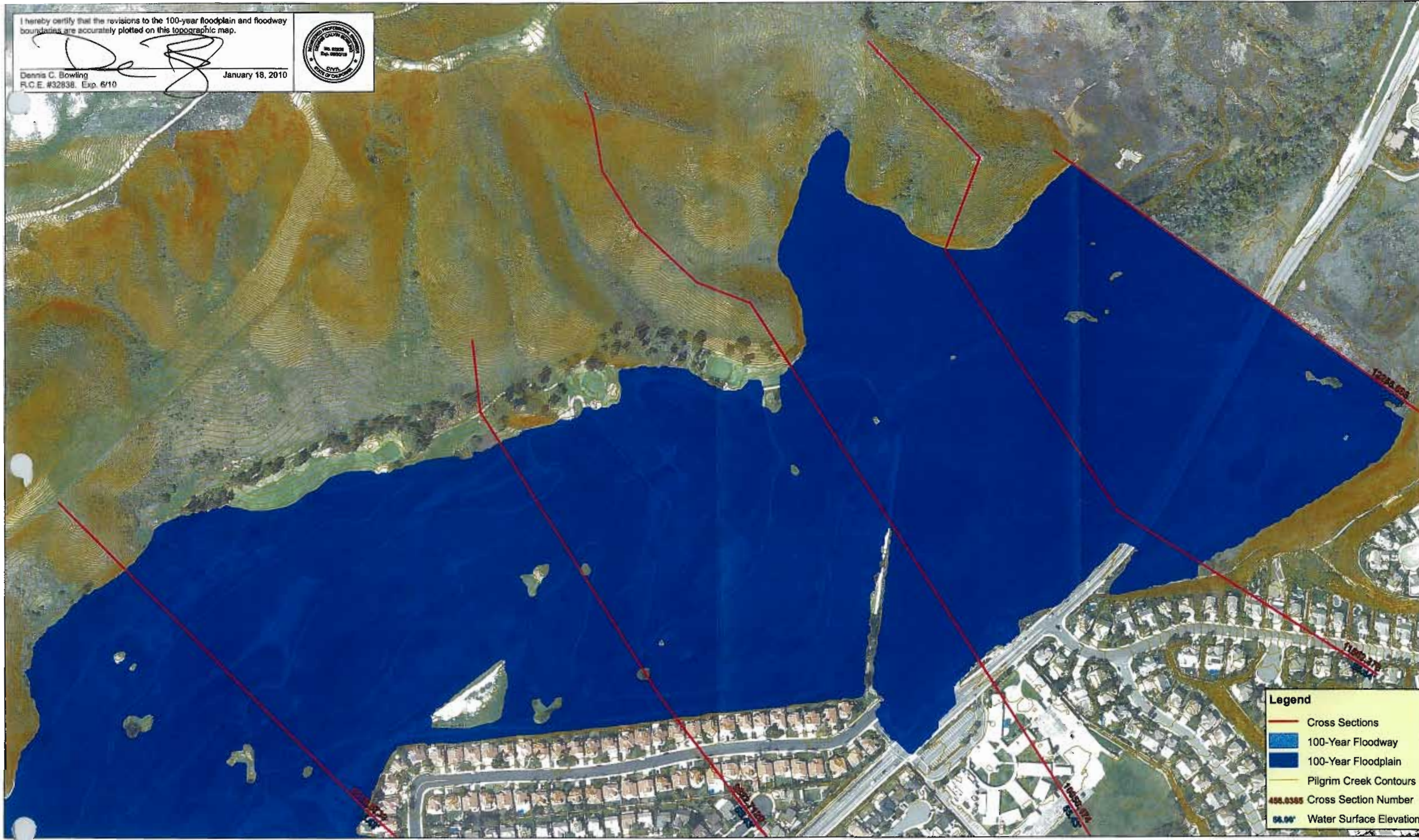


I hereby certify that the revisions to the 100-year floodplain and floodway boundaries are accurately plotted on this topographic map.

Dennis C. Bowling
R.C.E. #32838, Exp. 6/10
January 18, 2010

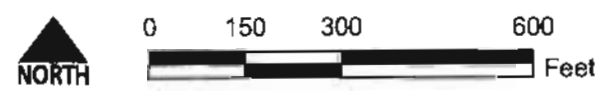


Legend

- Cross Sections
- 100-Year Floodway
- 100-Year Floodplain
- Pilgrim Creek Contours
- 456.0385 Cross Section Number
- 56.06' Water Surface Elevation

Pilgrim Creek - Letter of Map Revision (LOMR)

W:\180311\Hydro\FEMAP\PilgrimCreek_MapBooks.mxd
Date: January 15, 2010
REC IN: 15846



Data Source: Eagle Aerial Photo Date: March 2001
City of Oceanside Topography Horizontal Datum: NAD83 CA Zone VI (US Foot), Vertical Datum NAVD 88
RICK
ENGINEERING COMPANY