

- ① EXTEND WESTERLY MEDIAN BEYOND DRIVEWAYS (CITY)
- ② DEMOLISH AND REMOVE EXISTING SIDEWALK (CITY)
- ③ CONSTRUCT SIDEWALK (CITY)
- ④ EXISTING NO. 8 TO REMAIN

- ⑤ RELOCATED NO. 9A (CITY)
- ⑥ DEMOLISH AND REMOVE EXISTING CURB AND GUTTER (CITY)
- ⑦ CONSTRUCT NEW CURB AND GUTTER (CITY)
- ⑧ PROPOSED DETECTABLE WARNING STRIP (CITY)

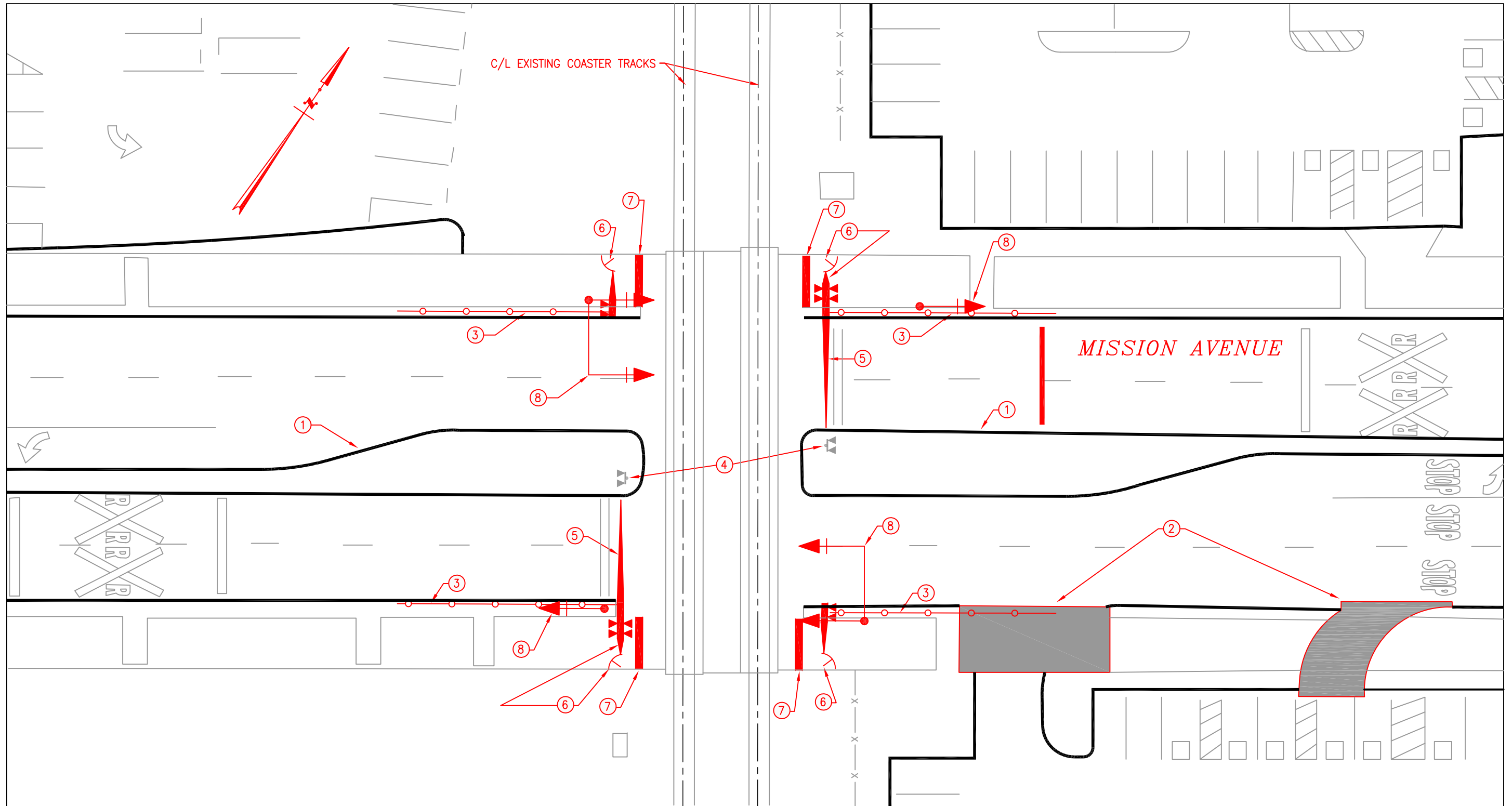
- ⑨ EXTEND CROSSING PANEL (CITY)
- ⑩ EXISTING RAISED MEDIAN TO REMAIN

REV.	DATE	DESCRIPTION	BY	APP.

RAILPROS INC.
 192 TECHNOLOGY DRIVE, SUITE R
 IRVINE, CA 92868
 WWW.RAILPROS.COM
 E-MAIL: INFO@RAILPROS.COM
 PHONE: (714) 734 - 8765
 FAX: (714) 734 - 8755

**CITY OF OCEANSIDE, CA
RAILROAD QUIET ZONE**

SURFRIDER WAY CONCEPTUAL PLAN			DWG. NO. 1
SCALE:	SIZE: 11"x17"	SHEET 1 OF 6	
DESIGNED: EH	DRAWN: JS	CHECKED: EH	DATE: FEB. 23, 2007



- ① MODIFY EXISTING MEDIAN WITH 6" MIN. CURBS AS MAY BE REQUIRED TO HAVE 6" MINIMUM CURBS FROM GATE TO A DISTANCE 100' BEYOND GATE (CITY)
- ② CLOSE EXISTING DRIVEWAY OR RELOCATE DRIVEWAY TO BE 60' MINIMUM FROM GATE (CITY)
- ③ CONSTRUCT PEDESTRIAN RAILING (CITY)

- ④ EXISTING NO. 8 TO REMAIN
- ⑤ EXISTING NO. 9 TO REMAIN
- ⑥ PROPOSED NO. 9 PEDESTRIAN GATE AND SWING GATE (CITY)
- ⑦ PROPOSED DETECTABLE WARNING STRIP (CITY)

- ⑧ FUTURE QUEUE-CUTTER SIGNAL TO BE INSTALLED WHEN ADJACENT INTERSECTIONS ARE SIGNALIZED AND/OR WHEN REQUIRED BY QUEUING STUDY (CITY)

NOTE: SEE SHEET 6 FOR NO. 9 PEDESTRIAN GATE AND SWING GATE DETAILS

REV.	DATE	DESCRIPTION	BY	APP.

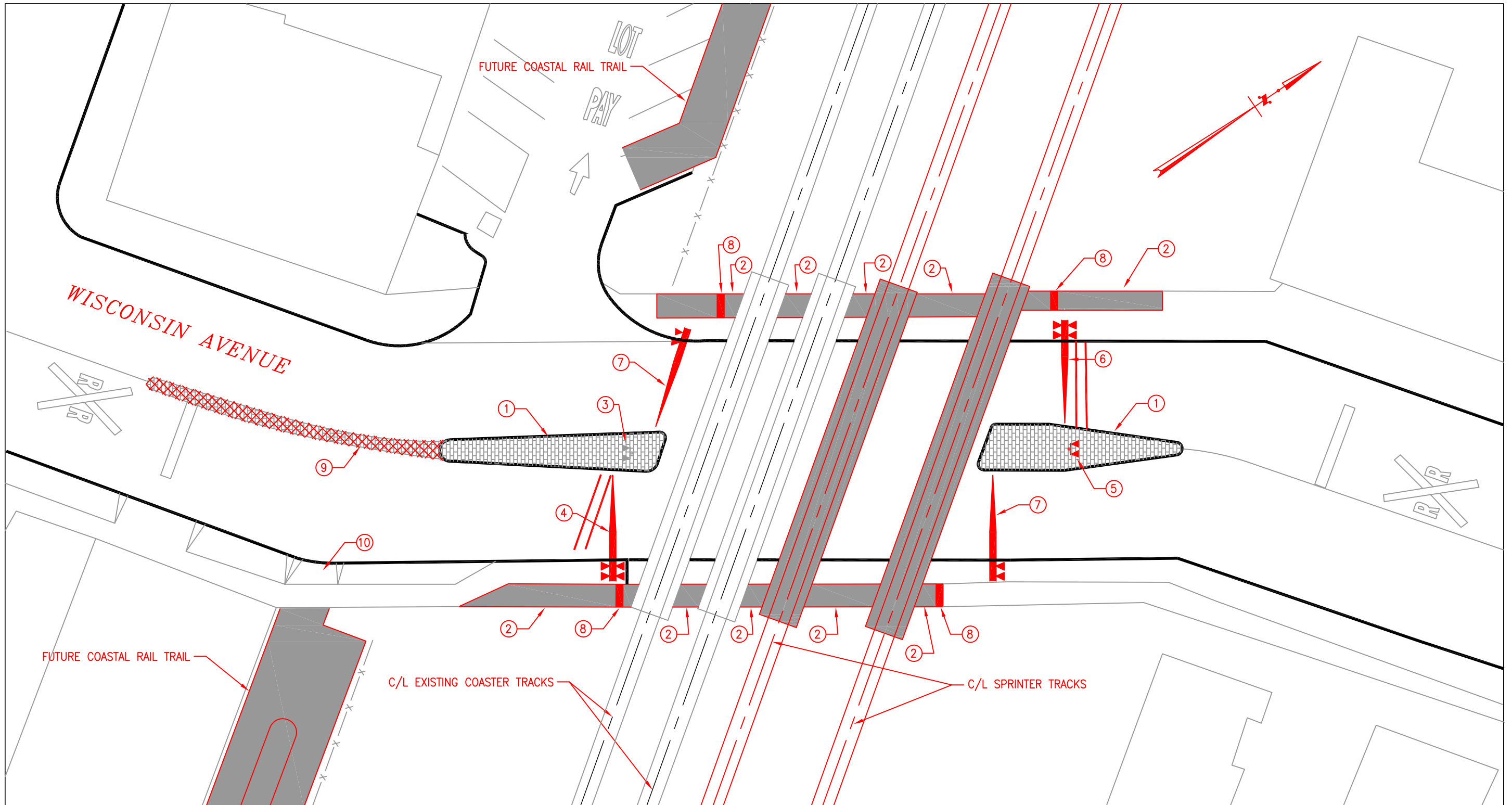


CITY OF OCEANSIDE, CA
RAILROAD QUIET ZONE

MISSION STREET
CONCEPTUAL PLAN

DWG. NO.
2

SCALE:	SIZE: 11"x17"	SHEET 2 OF 5
DESIGNED: EH	DRAWN: JS	CHECKED: EH DATE: FEB. 23, 2007



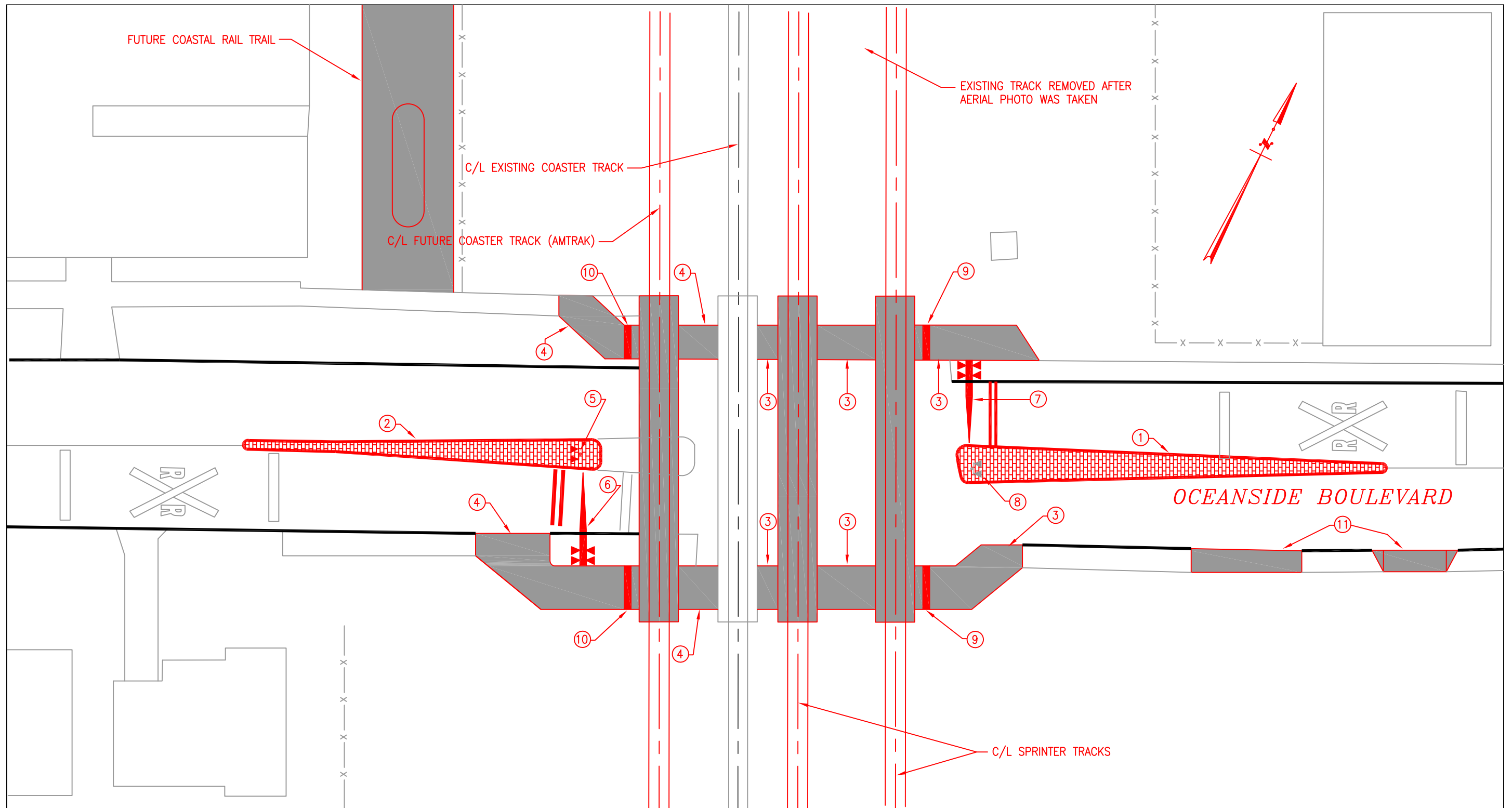
- | | | |
|--|---|---|
| ① RECONSTRUCTED MEDIAN (NCTD/SPRINTER) | ⑤ RELOCATED NO. 8 (NCTD/SPRINTER) | ⑨ REMOVE PORTION OF MEDIAN (CITY) |
| ② CONSTRUCT NEW SIDEWALK (NCTD/SPRINTER) | ⑥ RELOCATED NO. 9 (NCTD/SPRINTER) | ⑩ PROPOSED DRIVEWAY (CITY – COASTAL RAIL TRAIL PROJECT) |
| ③ EXISTING NO. 8 TO REMAIN | ⑦ PROPOSED NO. 9 EXIT GATE (CITY) | |
| ④ EXISTING NO. 9 TO REMAIN | ⑧ PROPOSED DETECTABLE WARNING STRIP (NCTD/SPRINTER) | |

REV.	DATE	DESCRIPTION	BY	APP.

RAILPROS INC.
 192 TECHNOLOGY DRIVE, SUITE R
 IRVINE, CA 92868
 WWW.RAILPROS.COM
 E-MAIL: INFO@RAILPROS.COM
 PHONE: (714) 734 - 8765
 FAX: (714) 734 - 8755

**CITY OF OCEANSIDE, CA
RAILROAD QUIET ZONE**

WISCONSIN AVENUE CONCEPTUAL PLAN		DWG. NO. 3
SCALE:	SIZE: 11"x17"	SHEET 3 OF 6
DESIGNED: EH	DRAWN: JS	CHECKED: EH DATE: FEB. 23, 2007



- | | | |
|---|-----------------------------------|--|
| ① RECONSTRUCT EAST MEDIAN WITH 6" MIN. CURBS (CITY) | ⑤ RELOCATED NO. 8 (AMTRAK) | ⑨ PROPOSED DETECTABLE WARNING STRIP (NCTD/SPRINTER) |
| ② RECONSTRUCT WEST MEDIAN WITH 6" MIN. CURBS (AMTRAK) | ⑥ RELOCATED NO. 9 (AMTRAK) | ⑩ PROPOSED DETECTABLE WARNING STRIP (AMTRAK) |
| ③ CONSTRUCT NEW SIDEWALK (NCTD/SPRINTER) | ⑦ RELOCATED NO. 8 (NCTD/SPRINTER) | ⑪ CLOSE EXISTING DRIVEWAY OR RELOCATE DRIVEWAY TO BE 60' MINIMUM FROM GATE |
| ④ CONSTRUCT NEW SIDEWALK (AMTRAK) | ⑧ EXISTING NO. 8 TO REMAIN | |

REV.	DATE	DESCRIPTION	BY	APP.

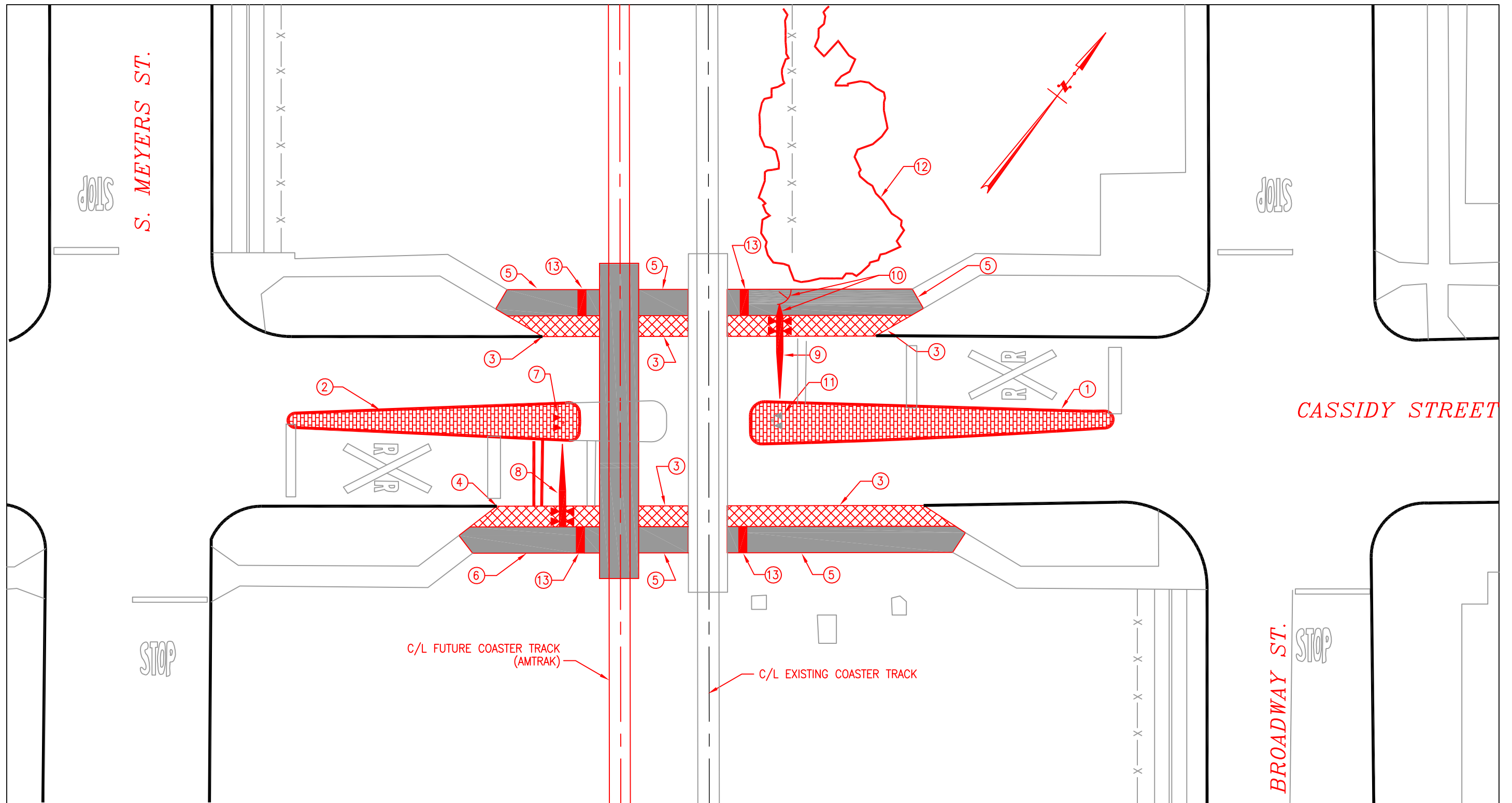


**CITY OF OCEANSIDE, CA
RAILROAD QUIET ZONE**

**OCEANSIDE BOULEVARD
CONCEPTUAL PLAN**

DWG. NO.
4

SCALE:	SIZE: 11"x17"	SHEET 4 OF 6
DESIGNED: EH	DRAWN: JS	CHECKED: EH DATE: FEB. 23, 2007



- | | | | |
|---|-----------------------------------|---|--|
| ① RECONSTRUCT EAST MEDIAN WITH 6" MIN. CURBS (CITY) | ⑤ CONSTRUCT NEW SIDEWALK (CITY) | ⑨ RELOCATED NO. 9 (CITY) | ⑬ PROPOSED DETECTABLE WARNING STRIP (AMTRAK) |
| ② RECONSTRUCT WEST MEDIAN WITH 6" MIN. CURBS (AMTRAK) | ⑥ CONSTRUCT NEW SIDEWALK (AMTRAK) | ⑩ PROPOSED NO. 9 PEDESTRIAN GATE AND SWING GATE (CITY) | |
| ③ DEMOLISH AND REMOVE EXISTING SIDEWALK (CITY) | ⑦ RELOCATED NO. 8 (AMTRAK) | ⑪ EXISTING NO. 8 TO REMAIN | |
| ④ DEMOLISH AND REMOVE EXISTING SIDEWALK (AMTRAK) | ⑧ RELOCATED NO. 9 (AMTRAK) | ⑫ ALTERNATE: REMOVE EXISTING TRESS AND VEGETATION IN LIEU OF CONSTRUCTING ITEM ⑩ (CITY) | |

NOTE: SEE SHEET 6 FOR NO. 9 PEDESTRIAN GATE AND SWING GATE DETAILS

REV.	DATE	DESCRIPTION	BY	APP.

RAILPROS INC.
 192 TECHNOLOGY DRIVE, SUITE R
 IRVINE, CA 92868
 WWW.RAILPROS.COM
 E-MAIL: INFO@RAILPROS.COM
 PHONE: (714) 734 - 8765
 FAX: (714) 734 - 8755

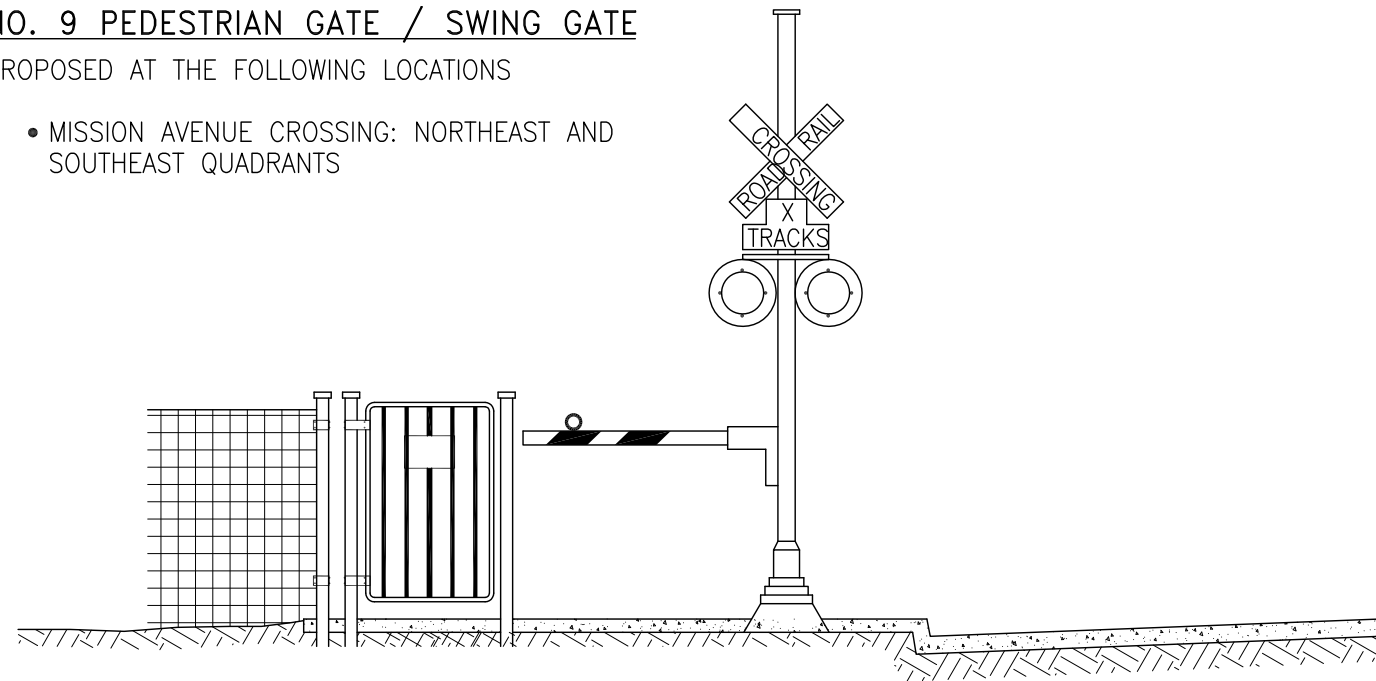
**CITY OF OCEANSIDE, CA
 RAILROAD QUIET ZONE**

CASSIDY STREET CONCEPTUAL PLAN		DWG. NO. 5
SCALE:	SIZE: 11"x17"	SHEET 5 OF 6
DESIGNED: EH	DRAWN: JS	CHECKED: EH DATE: FEB. 23, 2007

NO. 9 PEDESTRIAN GATE / SWING GATE

PROPOSED AT THE FOLLOWING LOCATIONS

- MISSION AVENUE CROSSING: NORTHEAST AND SOUTHEAST QUADRANTS

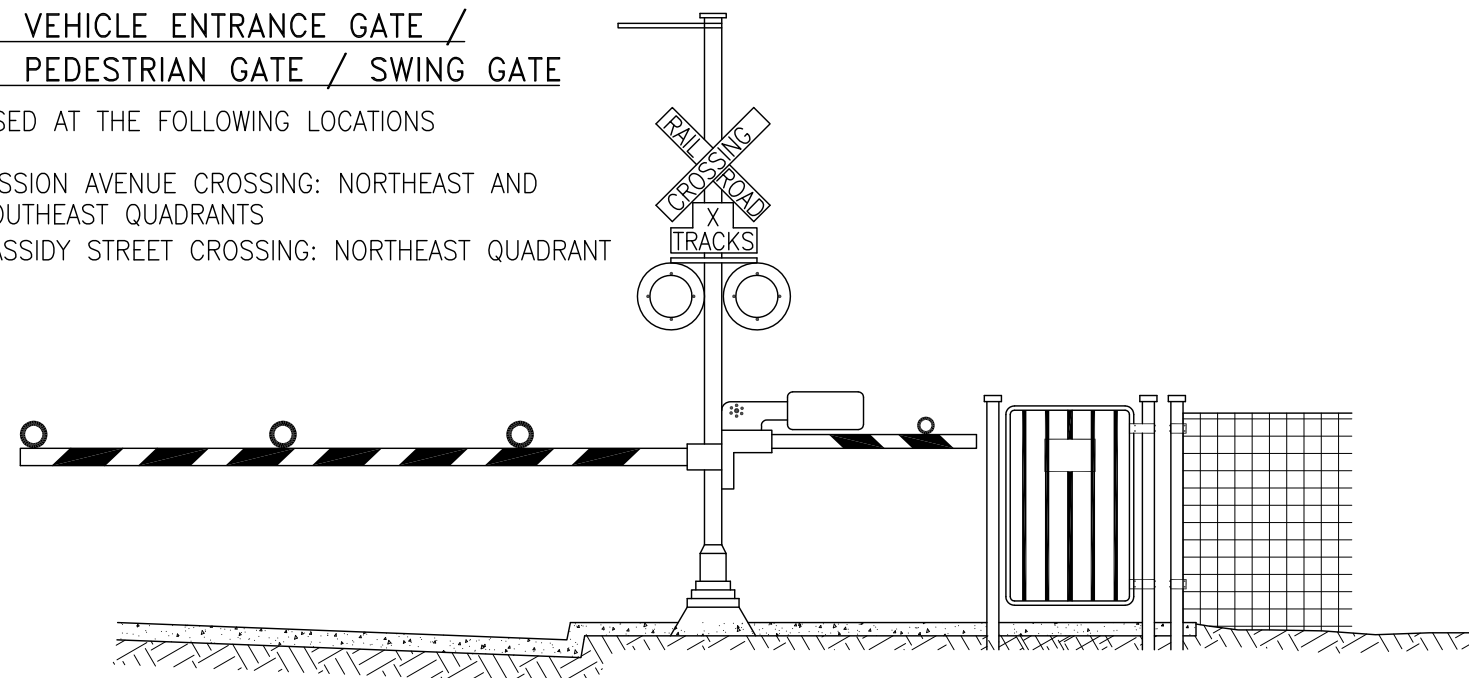


ELEVATION

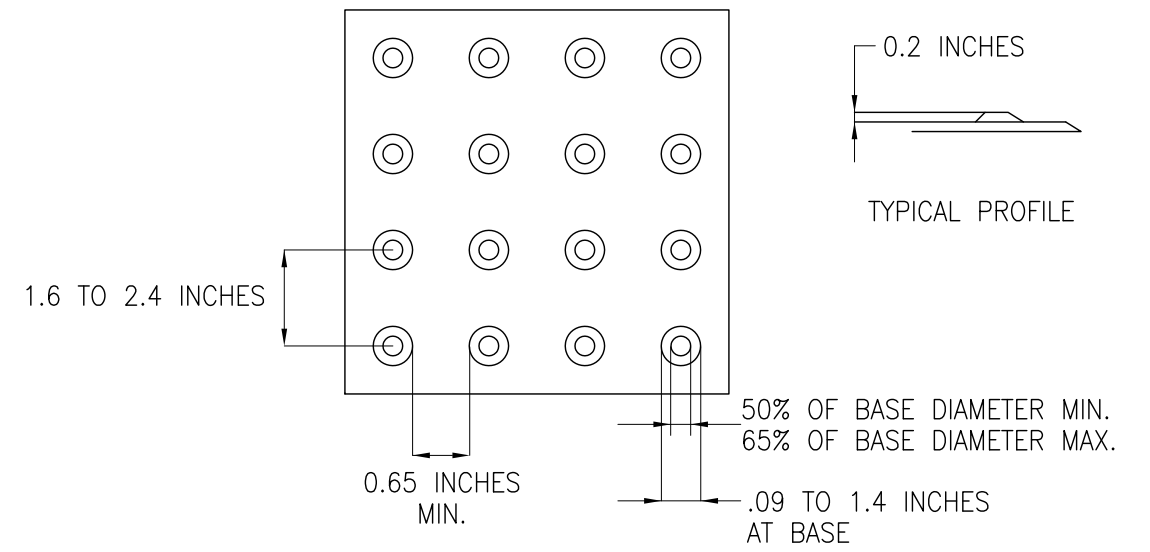
NO. 9 VEHICLE ENTRANCE GATE / NO. 9 PEDESTRIAN GATE / SWING GATE

PROPOSED AT THE FOLLOWING LOCATIONS

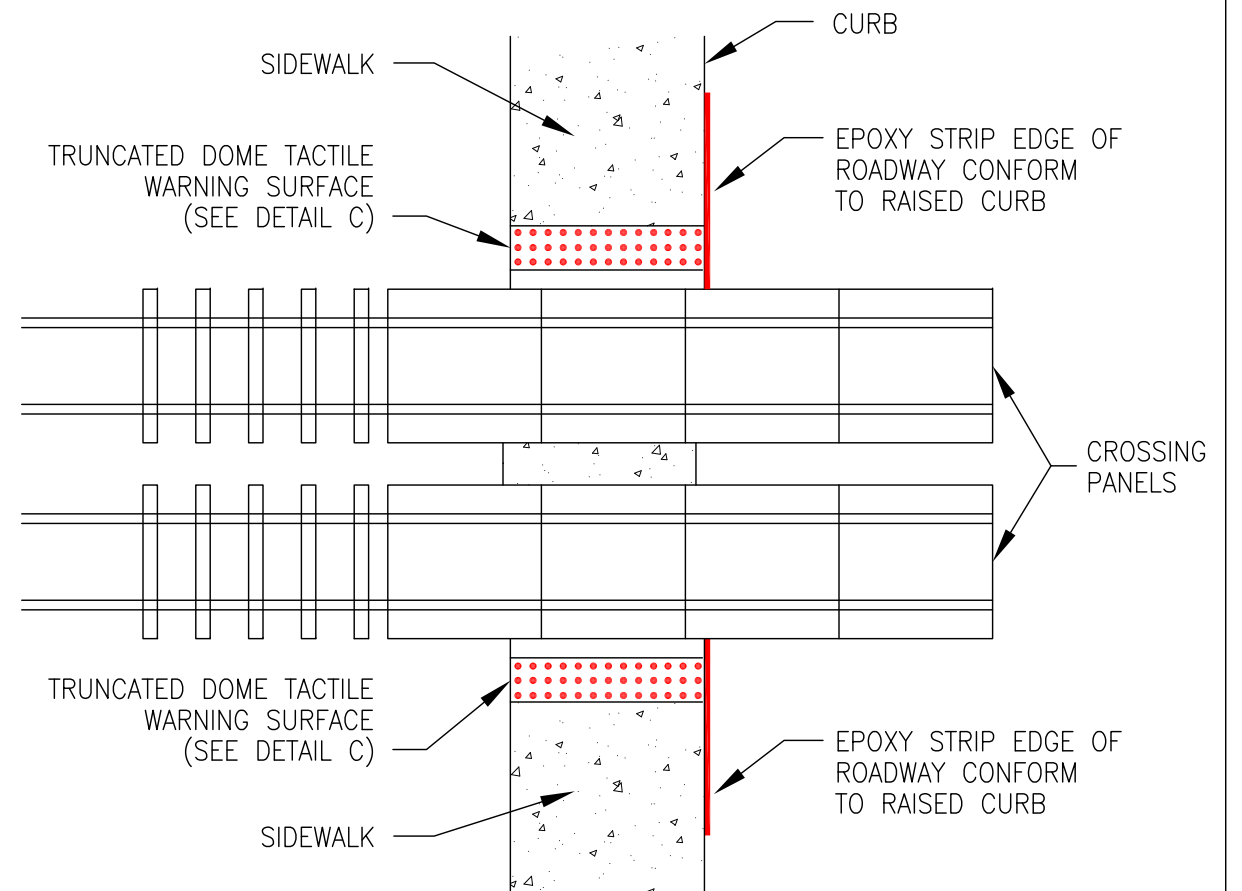
- MISSION AVENUE CROSSING: NORTHEAST AND SOUTHEAST QUADRANTS
- CASSIDY STREET CROSSING: NORTHEAST QUADRANT



ELEVATION



DETAIL C



DETECTABLE WARNING STRIP ON SIDEWALK APPROACHING CROSSING

REV.	DATE	DESCRIPTION	BY	APP.

RAILPROS INC.
 192 TECHNOLOGY DRIVE, SUITE R
 IRVINE, CA 92868
 WWW.RAILPROS.COM
 E-MAIL: INFO@RAILPROS.COM
 PHONE: (714) 734 - 8765
 FAX: (714) 734 - 8755

**CITY OF OCEANSIDE, CA
RAILROAD QUIET ZONE**

**DETAILS
CONCEPTUAL PLAN**

DWG. NO.

6

SCALE:	SIZE: 11"x17"	SHEET 6 OF 6
DESIGNED: EH	DRAWN: JS	CHECKED: EH DATE: FEB. 23, 2007