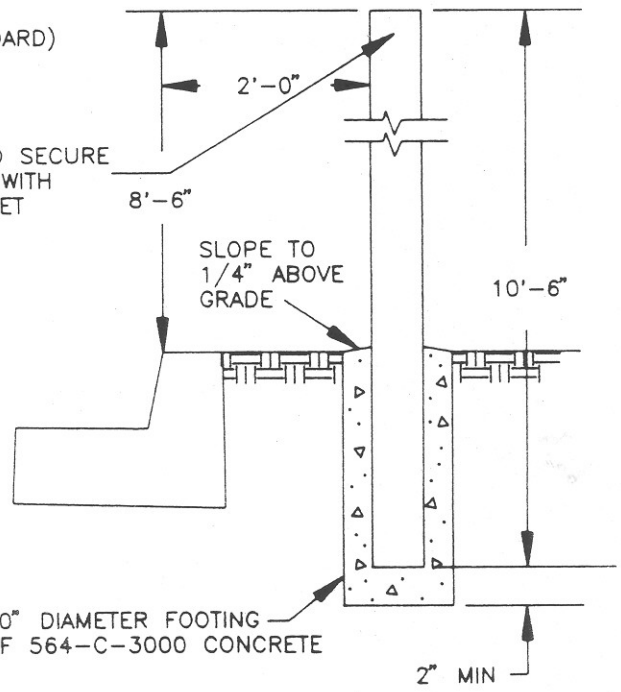


DRILL HOLE TO SECURE CAP TO POST WITH SCREW OR RIVET



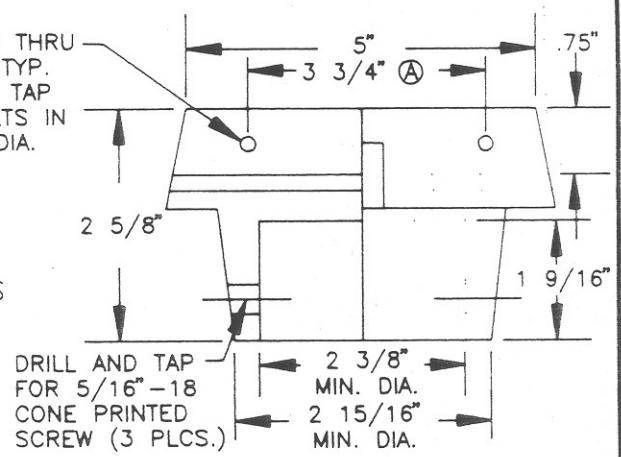
STREET NAME SIGN LOCATION

(NUMBERS INDICATE PRIORITY OF LOCATION SELECTION)

NOTES

1. (A) DENOTES 3 3/4" SPACING SHALL MATCH THE HOLES IN THE EXTRUDED BLADES
2. BRACKET TO BE DIE CAST ALUMINUM
3. ALL ATTACHING SCREWS SHALL BE VANDAL PROOF TYPE
4. ALL STREET SIGNS SHALL BE BLACK LETTERS WITH WHITE BACKGROUND

DRILL 11/32" HOLE THRU NEAR SIDE FLANGE TYP. 2 PLCS. DRILL AND TAP FOR 5/16"-18 BOLTS IN LINE WITH 11/32" DIA. HOLES



Revision	By	Approved	Date

CITY OF OCEANSIDE

STANDARD STREET SIGN

Ronell A. Bedn

CITY ENGINEER (2/2/92) Date

STANDARD DRAWING NO. T-3