



# MISSION AVENUE IMPROVEMENTS PROJECT DOWNTOWN

## Oceanside Business Owners and Residents UPDATE #2 Mission Ave - Phase 1 Construction

Tuesday, November 12, 2013

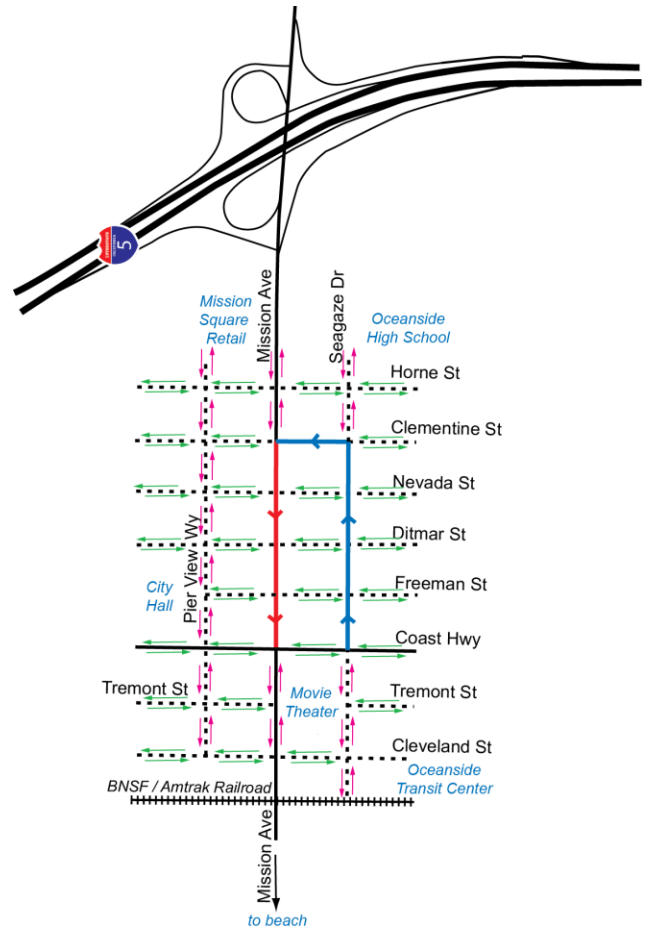
On Tuesday, November 12, 2013, construction will begin on Mission Avenue from Clementine Street to Ditmar Street. Temporary traffic control will be placed from Horne to Coast Highway. The temporary traffic control will prevent street parking from Ditmar to Coast Highway. Signage will be placed along Mission Avenue directing patrons to use side streets for parking. Completion for Mission Avenue Phase 1 construction is expected by Mid-January.

Mission Avenue will become one-way traffic west bound as depicted on the right.

**IT IS OUR GOAL TO MINIMIZE THE  
IMPACT TO YOUR BUSINESS**

For Additional Information please contact:

Nathan Mertz (CITY): 760-435-5619 or  
Terry Jones (ARCADIS): 760-586-6309



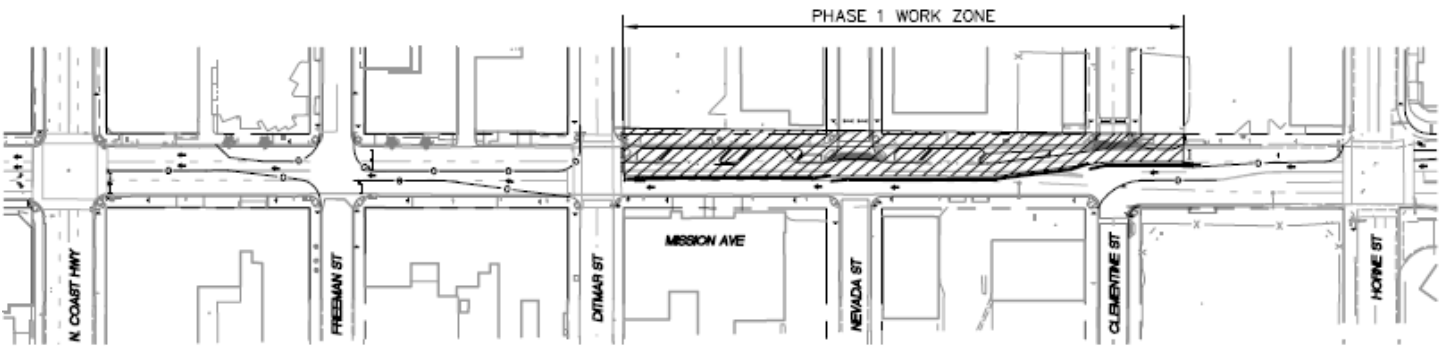
One-way Street Conversion Legend		
	Seagaze Drive/Clementine St	Oct. 24/25
	Mission Avenue	Nov. 12



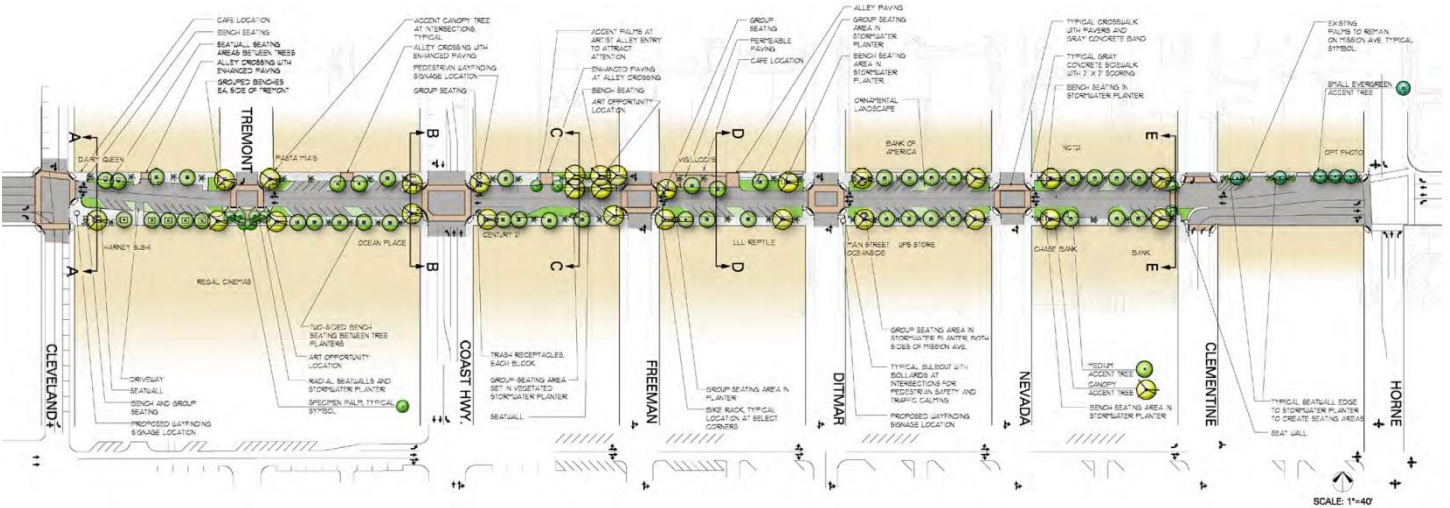
For more information please log-on to:  
<http://www.ci.oceanside.ca.us/gov/dev/eng/ma1p.asp>

Please follow us on Facebook and Twitter

# MISSION AVENUE IMPROVEMENTS PROJECT DOWNTOWN



Cross-hatched area represents the area of Mission Ave - Phase 1 construction



For more information please log-on to:  
<http://www.ci.oceanside.ca.us/gov/dev/eng/maip.asp>

Please follow us on Facebook and Twitter