

**AGENDA**  
**OCEANSIDE DEVELOPER'S CONFERENCE**

**Tuesday, January 18, 2011, 9:00 a.m.**  
**Guajome Room**

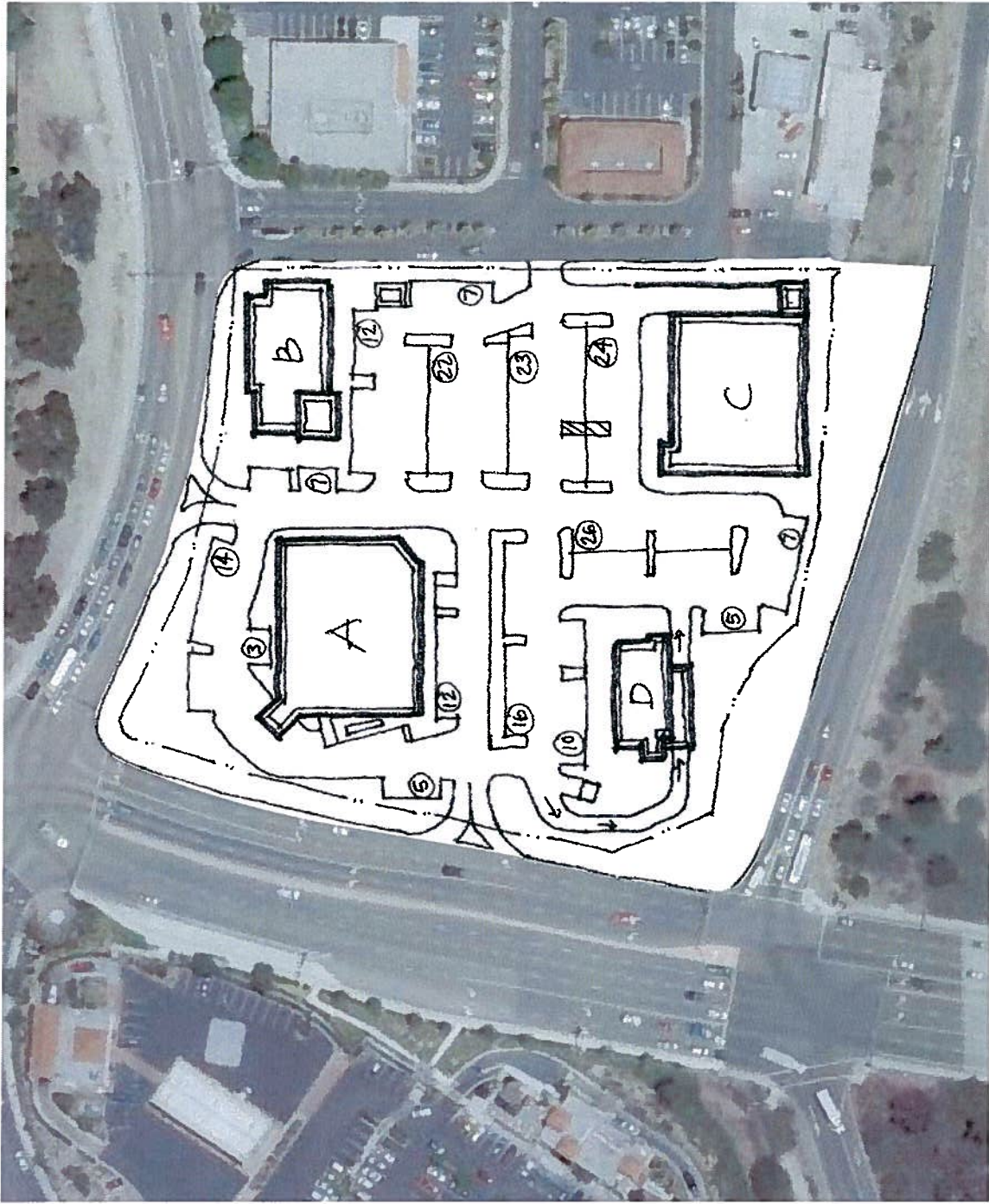
1. 9:00a.m. - 10:00 a.m.

Discussion for the construction of four commercial buildings with surface parking on a 3.05-acre site located at the south east corner of Ivy Road and Vista Way.

**Zoning:** Community Commercial (CC)  
**Land Use:** Community Commercial (CC)  
**Neighborhood Area:** Fire Mountain  
**Assessor Parcel:** 165-120-20-00  
**Contact Person:** Bruce Schiff  
**Tel.:** (760) 431-4207

**Attachments:**

APN Maps:  
165-120-20-00



**BUILDING SUMMARY**

A DRUG STORE	14,600 SF.
B SHOPS	7,000 SF.
C GROCERY	14,000 SF.
D FAST FOOD	3,750 SF.
<b>TOTAL</b>	<b>39,350 SF.</b>

**PROVIDED PARKING**

**TOTAL 98 STALLS (49/1000)**

**January 3, 2010**



**Andrew Hill Stevenson Architects**

3465 LaJolla Village Drive, Suite 300  
 San Diego, California 92121  
 T: 619.220.7223 F: 619.546.1099

**78 and Jefferson**

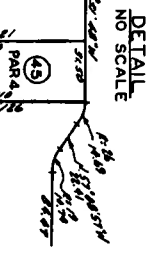
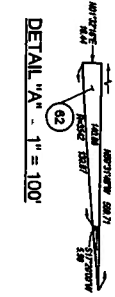
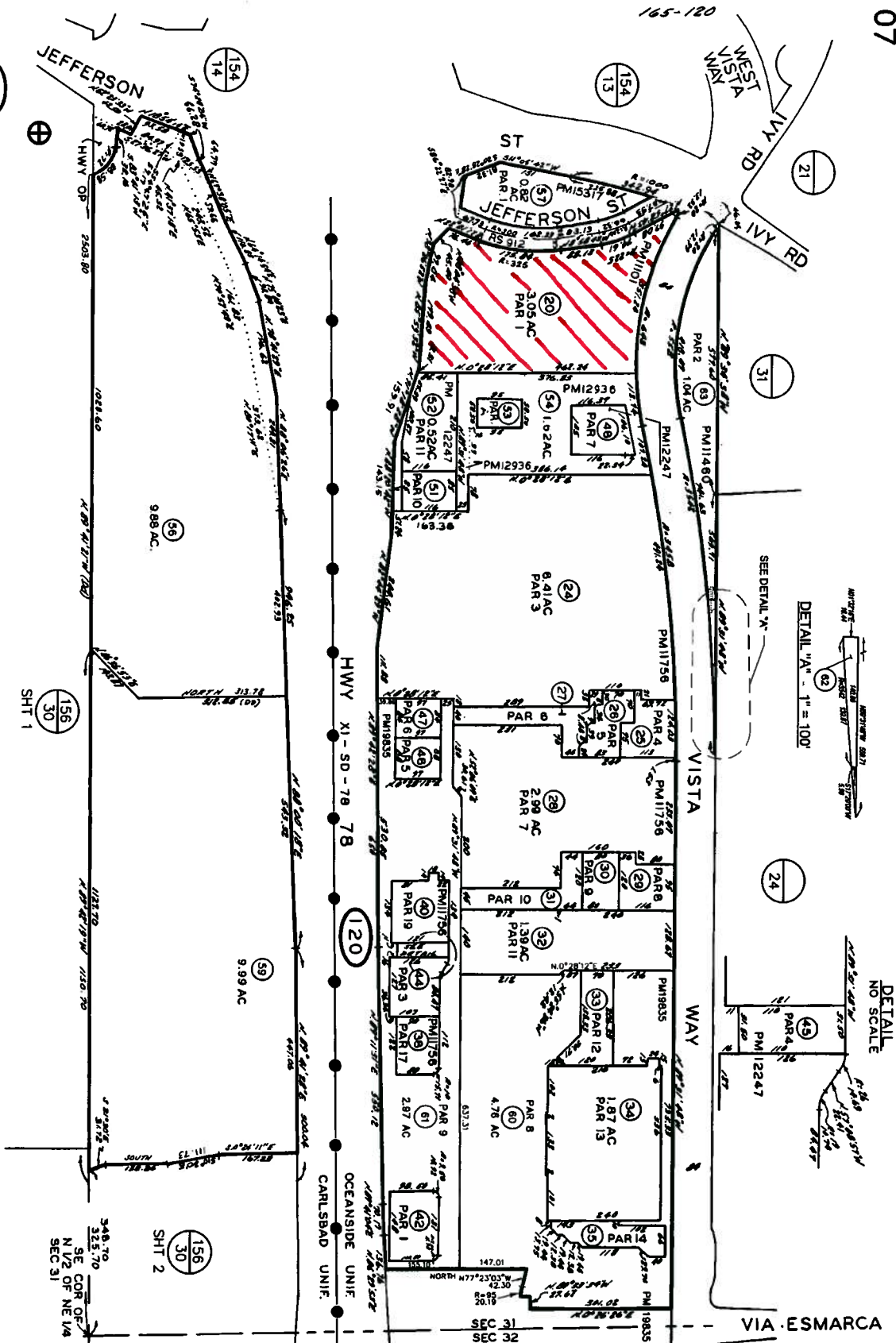
**Oceanside, California**

07

SAN DIEGO COUNTY  
ASSASSOR'S OFFICE  
BOOK 165 PAGE 12 SHIT 1 OF 2

THIS MAP WAS PREPARED FOR ASSESSMENT PURPOSES ONLY. NO LIABILITY IS ASSUMED FOR THE ACCURACY OF THE DATA SHOWN. ASSESSOR'S PARCELS MAY NOT COMPLY WITH LOCAL SUBDIVISION OR BUILDING ORDINANCES.

SEC 31 - T1S - R4W - POR NE 1/4  
ROS 8356, 13786, 16299



165-12  
SHT 1 OF 2



CHANGES

BLK/OLD	NEW/RI/CUT
1/20	1/20
1/21	1/21
1/22	1/22
1/23	1/23
1/24	1/24
1/25	1/25
1/26	1/26
1/27	1/27
1/28	1/28
1/29	1/29
1/30	1/30
1/31	1/31
1/32	1/32
1/33	1/33
1/34	1/34
1/35	1/35
1/36	1/36
1/37	1/37
1/38	1/38
1/39	1/39
1/40	1/40
1/41	1/41
1/42	1/42
1/43	1/43
1/44	1/44
1/45	1/45
1/46	1/46
1/47	1/47
1/48	1/48
1/49	1/49
1/50	1/50
1/51	1/51
1/52	1/52
1/53	1/53
1/54	1/54
1/55	1/55
1/56	1/56
1/57	1/57
1/58	1/58
1/59	1/59
1/60	1/60
1/61	1/61
1/62	1/62
1/63	1/63
1/64	1/64
1/65	1/65
1/66	1/66
1/67	1/67
1/68	1/68
1/69	1/69
1/70	1/70
1/71	1/71
1/72	1/72
1/73	1/73
1/74	1/74
1/75	1/75
1/76	1/76
1/77	1/77
1/78	1/78
1/79	1/79
1/80	1/80
1/81	1/81
1/82	1/82
1/83	1/83
1/84	1/84
1/85	1/85
1/86	1/86
1/87	1/87
1/88	1/88
1/89	1/89
1/90	1/90
1/91	1/91
1/92	1/92
1/93	1/93
1/94	1/94
1/95	1/95
1/96	1/96
1/97	1/97
1/98	1/98
1/99	1/99
1/100	1/100



# City of Oceanside



### City of Oceanside

Every reasonable effort has been made to assure the accuracy of the data provided, however, The City of Oceanside and its employees and agents disclaim any and all responsibility from or relating to any results obtained in its use. The GIS database and data in the viewer is subject to constant change and the accuracy and completeness cannot be and is not guaranteed. THE CITY OF OCEANSIDE MAKES NO WARRANTIES OR GUARANTEES, EITHER EXPRESSED OR IMPLIED AS TO THE COMPLETENESS, ACCURACY, OR CORRECTNESS OF SUCH PRODUCT, NOR ACCEPTS ANY LIABILITY, ARISING FROM ANY INCORRECT, INCOMPLETE OR MISLEADING INFORMATION CONTAINED THEREIN.

Sources:  
 Orthophoto 2005 Merrick, 2009 DMI