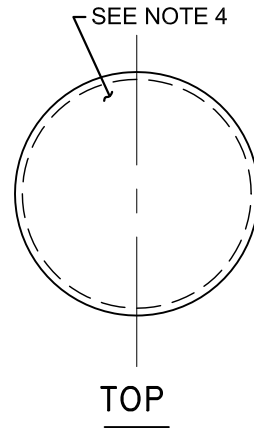
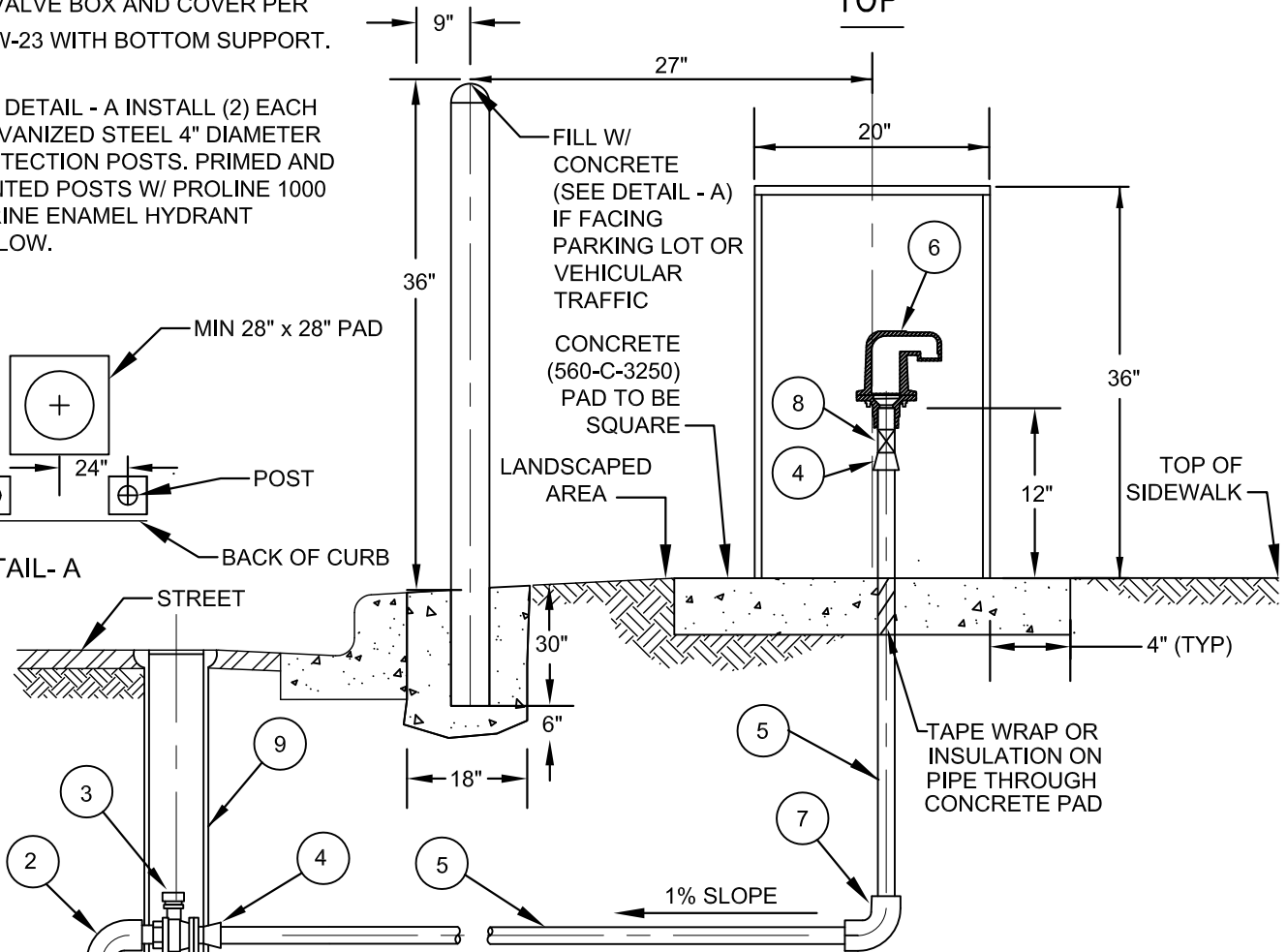
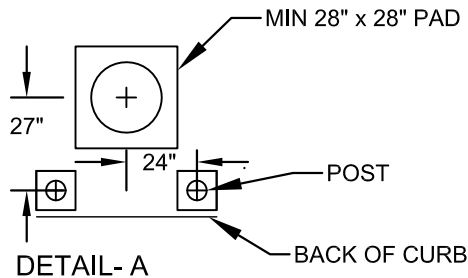


BILL OF MATERIALS

1. BRASS SERVICE SADDLE AND CORPORATION STOP PER SECTION 2.12.
2. 2" MIP X FIP THREADED 90° BRASS ELBOW.
3. 2" MIP X FIP BALL VALVE WITH 2" OPERATING NUT ADAPTER. PER SECTION 2.12.
4. 2" COPPER TO M.I.P. ADAPTER.
5. 2" TYPE "K" COPPER TUBING (RIGID).
6. 2" A.R.I. MODEL D-040-NS AIR VALVE W/ SCREEN
7. 2" TYPE "K" COPPER 90° ELBOW.
8. 2" BALL VALVE JAMES JONES J-1900 PER SECTION 2.12.
9. VALVE BOX AND COVER PER W-23 WITH BOTTOM SUPPORT.

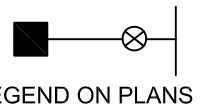


PER DETAIL - A INSTALL (2) EACH GALVANIZED STEEL 4" DIAMETER PROTECTION POSTS. PRIMED AND PAINTED W/ PROLINE 1000 MARINE ENAMEL HYDRANT YELLOW.



NOTES:

1. BURIED COPPER TO BE ENCASED IN 6-MIL POLY SLEEVE PER SECTION 2.12.
2. AIR RELEASE 3" AND LARGER WILL REQUIRE SPECIAL DESIGN.
3. ALL COPPER JOINTS TO BE SILVER SOLDER.
4. ENCLOSURE SHALL BE ARMORCAST MODEL #P6002002-SND (20"X36") OR PIPELINE PRODUCTS #VCAS 1830-SM (18"X30")
5. SERVICES TO BE ENCASED IN 6" SE 30 SAND.
6. ALL BOLTS, NUTS, AND WASHERS TO BE TYPE 316 SS



Revision	By	Approved	Date
07/08/04	AC		
06/04/07	AC		
03/05/08	DW		
09/22/10	DW		
04/25/17	MU		
07/01/17	SM		08/01/17

CITY OF OCEANSIDE

2" AIR VALVES

Steven E. Stronac 9/17/17
 CITY ENGINEER Date
 STANDARD
 DRAWING NO. **W-3**