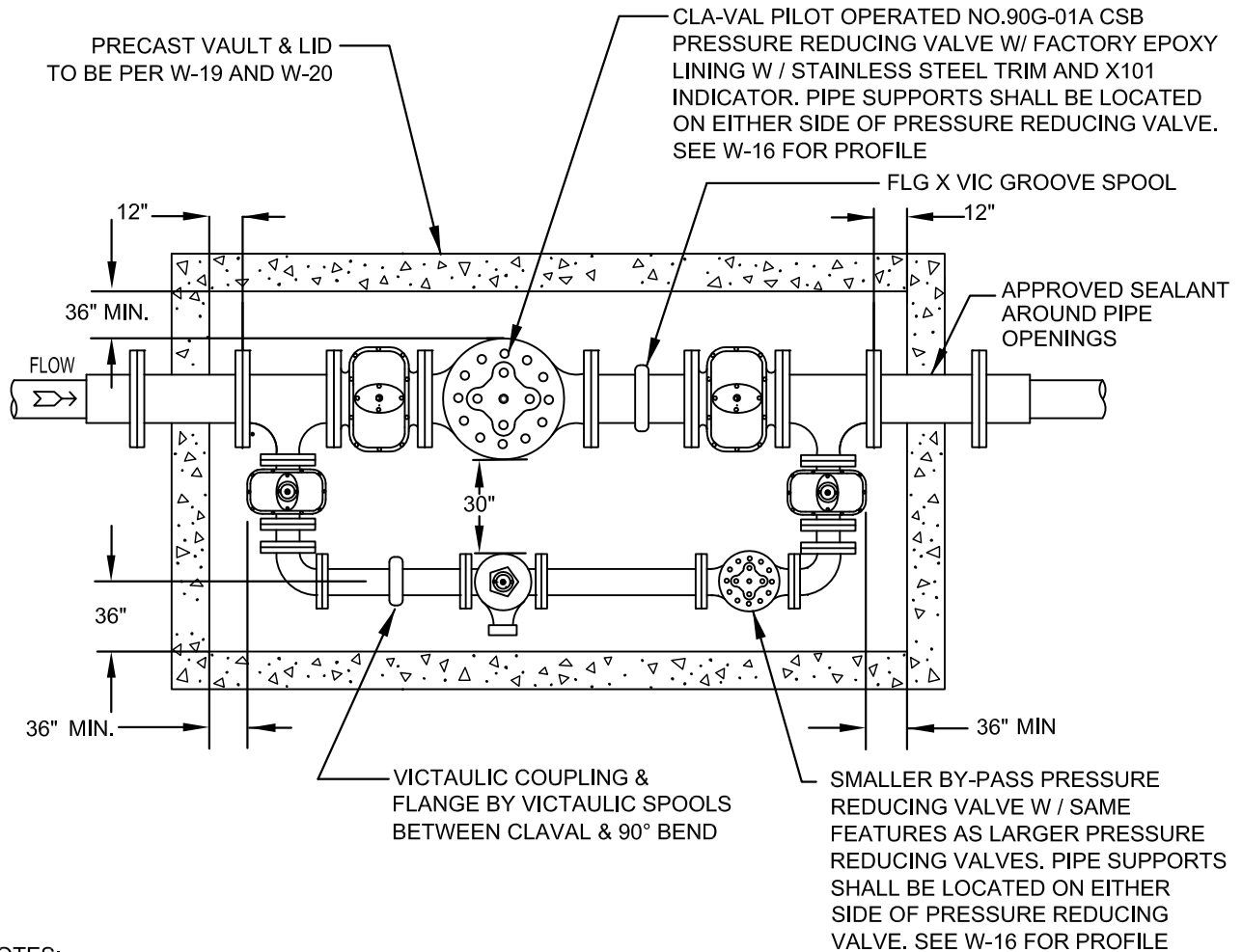


**BASIC LAYOUT FOR A STANDARD PRESSURE REGULATOR OR
PRESSURE REGULATING VALVE & VAULT**



NOTES:

1. EACH PRESSURE REGULATOR STATION SHALL BE DESIGNED AND SUBMITTED FOR APPROVAL BY THE WATER UTILITIES DEPARTMENT ON A CASE-BY-CASE BASIS.
2. REGULATOR MUST BE PROVIDED WITH AN EJECTOR WITH TEST COCKS ON ALL VALVES AND 3" OIL-FILLED GAUGE (0-300 PSI), 3-D OR EQUAL.
3. REGULATOR AND ALL PIPING WITHIN THE VAULT SHALL BE PAINTED WITH ALUMINUM INDUSTRIAL PAINT. EXTERIOR SURFACES SHALL BE CLEANED AND PRIMED WHERE NECESSARY WITH SHERWIN WILLIAM PAINT. "DAPPER TAN SW 6144" COLOR, BASE COAT-SW MACROPOXY HS 646 APPLIED @ 5.0 TO 6.0 MILS; INTERMEDIATE COAT-SW MACROPOXY HS 646 APPLIED @ 5.0 TO 6.0 MILS.
4. COAT INTERIOR OF VAULT WITH SANCON 100 OR ZEBRON.
5. WATERPROOF EXTERIOR AS REQUIRED.
6. VALVE SUPPORTS PER W-18 TO BE INSTALLED AT BOTH ENDS OF PRESSURE REGULATORS.
7. SCADA AND ELECTRICAL DESIGN MUST BE SUBMITTED TO THE WATER UTILITIES DEPARTMENT FOR REVIEW AND APPROVAL.

Revision	By	Approved	Date	CITY OF OCEANSIDE	<i>Steven E. Strapac</i> 9/17/17 CITY ENGINEER Date
07/16/04	AC				
09/22/10	DW				
12/01/11	DW				
04/19/12	DW				
01/04/16	MU				
07/01/17	SM		08/01/17		