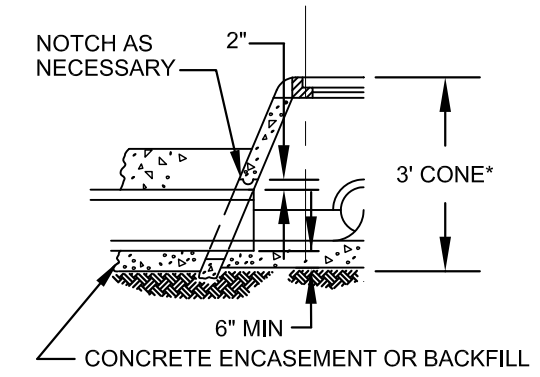
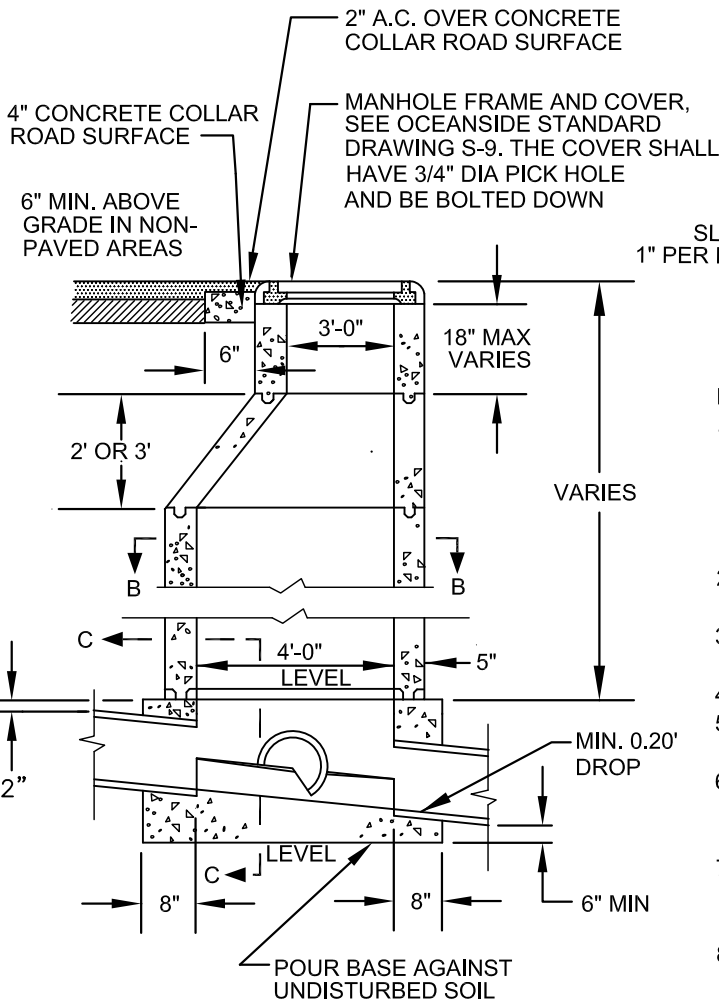


SECTION B-B

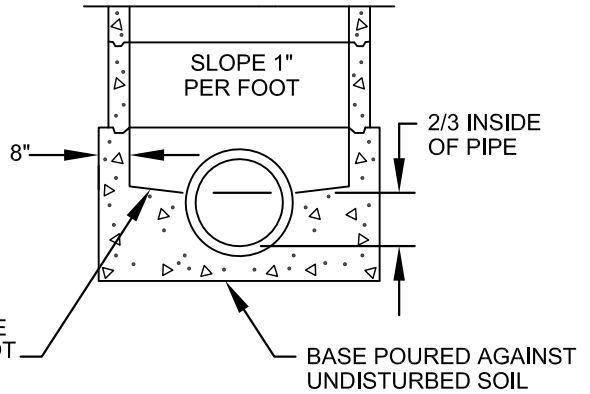


HALF SECTION SHALLOW MANHOLE

* ECCENTRIC CONE SHALL BE USED.



SECTION A-A



SECTION C-C

NOTES

1. MANHOLE FRAME AND ALL JOINTS SHALL BE SET IN CLASS "C" MORTAR, 3/8" THICK, NEATLY STRUCK AND POINTED OR PREFORMED COLD-APPLIED READY-TO-USE PLASTIC JOINT SEALING COMPOUND AND PRIMER. (ALSO SEE NOTE 6 BELOW)
2. ALL PRECAST COMPONENTS SHALL BE MANUFACTURED IN ACCORDANCE WITH ASTM C-478
3. VERTICAL WALL OF CONE SHALL BE ON THE DOWNSTREAM SIDE OF THE MANHOLE.
4. CONCRETE BASE SHALL BE 560-C-3250.
5. APPROVED WATERSTOP REQUIRED FOR PLASTIC PIPE CONNECTIONS.
6. WHEN MANHOLE IS IN GROUND WATER OR IN THE DRAINAGE PATH USE APPROVED EPOXY MORTAR AT JOINTS.
7. INTERIOR OF THE MANHOLE SHALL BE COATED WITH SANCON 100, ZEBRON, OR SAUERISEN SEWERGUARD 210S.
8. RUBBER RINGS, WATERPROOF LIDS IN AREAS SUBJECT TO FLOODING.
9. ALL MANHOLES SHALL HAVE BOLTED LIDS.

Revision	By	Approved	Date
04/15/01	kal		
10/22/02	DW		
09/22/10	DW		
01/04/16	MU		
07/01/17	SM		08/01/17

CITY OF OCEANSIDE

**MANHOLE- 4' DIAMETER
(FOR 21" MAX. DIA. PIPE)**

Steven E. Strapac 9/17/17
CITY ENGINEER Date

STANDARD DRAWING NO. **S-5**