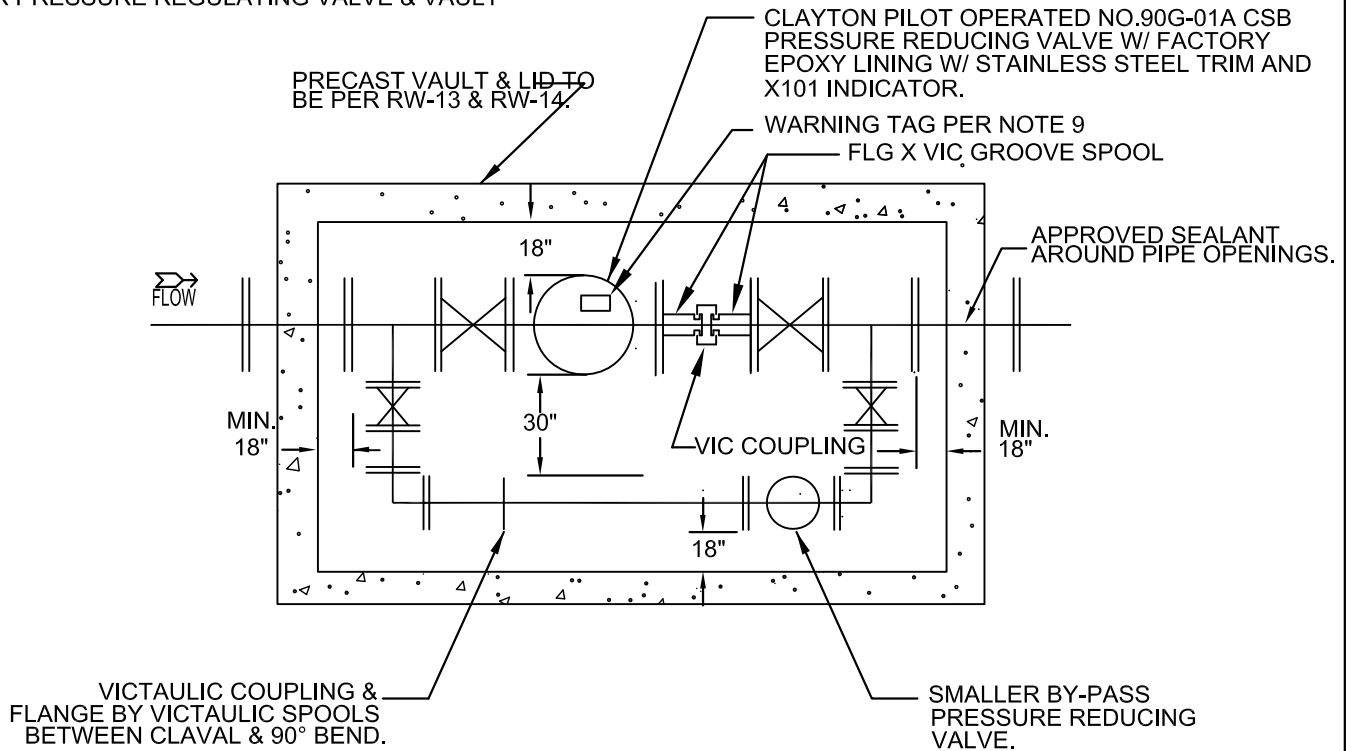


BASIC LAYOUT FOR A STANDARD PRESSURE REGULATOR
OR PRESSURE REGULATING VALVE & VAULT



NOTES:

1. EACH PRESSURE REGULATOR STATION SHALL BE DESIGNED AND SUBMITTED FOR APPROVAL BY THE WATER UTILITIES DEPARTMENT ON A CASE BY CASE BASIS.
2. REGULATOR MUST BE PROVIDED WITH AN EJECTOR WITH TEST COCKS ON ALL VALVES, AND 3" OIL FILLED GAUGE (0-300 PSI), 3-D OR EQUAL.
3. REGULATOR AND ALL PIPING WITHIN THE VAULT SHALL BE PAINTED SAFETY PURPLE
4. COAT INTERIOR OF VAULT WITH SANCON 100 OR ZEBRON.
5. WATERPROOF EXTERIOR AS REQUIRED BY THE ENGINEER.
6. VALVE SUPPORTS PER RW-12 TO BE INSTALLED AT BOTH ENDS OF PRESSURE REGULATOR.
7. MINIMUM 18" CLEARANCE FROM ALL VALVES & APPURTENANCES.
8. SCADA DESIGN MUST BE SUBMITTED TO WATER UTILITIES DEPT. FOR APPROVAL.
9. WARNING TAGS SHALL BE CHRISTY'S MODEL ID-MAX-P2-RC007

Revision	By	Approved	Date
04/10/00	kal		
08/30/04	AC		
09/30/15	IN		
07/01/17	SM		08/01/17

CITY OF OCEANSIDE

PRESSURE REDUCING VALVE

Steven E. Strapac 9/17/17
CITY ENGINEER Date
STANDARD DRAWING NO. **RW-11**