

AGENDA
OCEANSIDE DEVELOPER'S CONFERENCE

Tuesday, May 17, 2011, 10:00 a.m.
Guajome Room

1. 10:00 a.m.-10:30

Discussion for the construction of a carwash within an existing commercial center located at the north west corner of Oceanside Boulevard and Temple Heights Drive.

Zoning: Limited Commercial (CL)
Land Use: Commercial Limited (CL)
Neighborhood Area: Peacock
Assessor Parcel: 161-540-20-00
Contact Person: Mark Gregson
Tel.: (760) 519-4441

Attachments:

APN Maps:
161-540-20-00

Scott Nightingale

From: Mark Gregson <mgregson@sunriseinvestmentgroup.com>
Sent: Tuesday, May 10, 2011 1:29 PM
To: Scott Nightingale
Cc: 'james shin'
Subject: FW: Developers conference for Mark Gregson - with attachments
Attachments: OcnSqPlatMap.bmp; Parcel3.jpg; OcnSqAerial4mod.JPG; OceansideSITEplan-Model.pdf; SitePlan.jpg; All3Parcels.jpg

Hi Scott

Thank you for your voicemail

We would like to schedule a developers conference for next Tuesday May 17 at 10am.

This conference concerns Parcel # 161-540-20-00
Parcel map PM 16030
Tax area 07017

We desire to build an Express Car Wash on the corner pad of Oceanside Square. This would be an Express Wash, drive through type. We will bring a car wash expert and additional documentation.

We previously spoke with Richard Greenbauer, who stated that this site was suitable for a car wash but that a CUP was required.

Thank you

Mark Gregson
(760) 519-4441

_____ Information from ESET Smart Security, version of virus signature database 6110 (20110510)

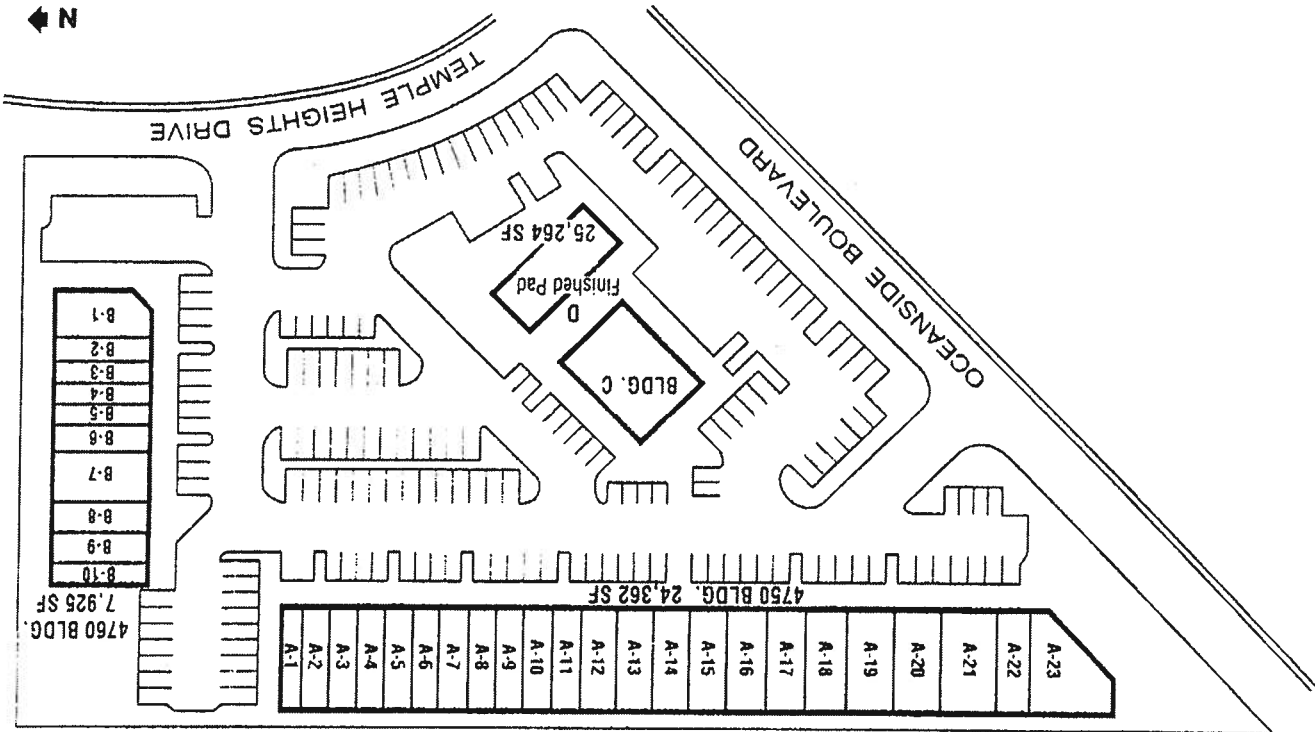
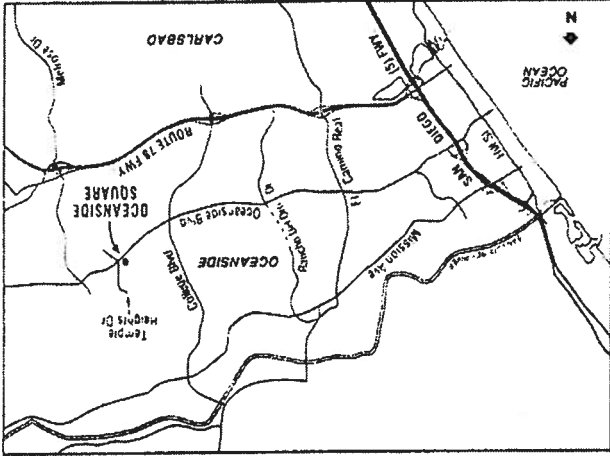
The message was checked by ESET Smart Security.

<http://www.eset.com>

_____ Information from ESET Smart Security, version of virus signature database 6110 (20110510)

The message was checked by ESET Smart Security.

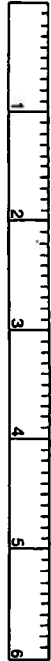
<http://www.eset.com>





07

1-800-345-7334



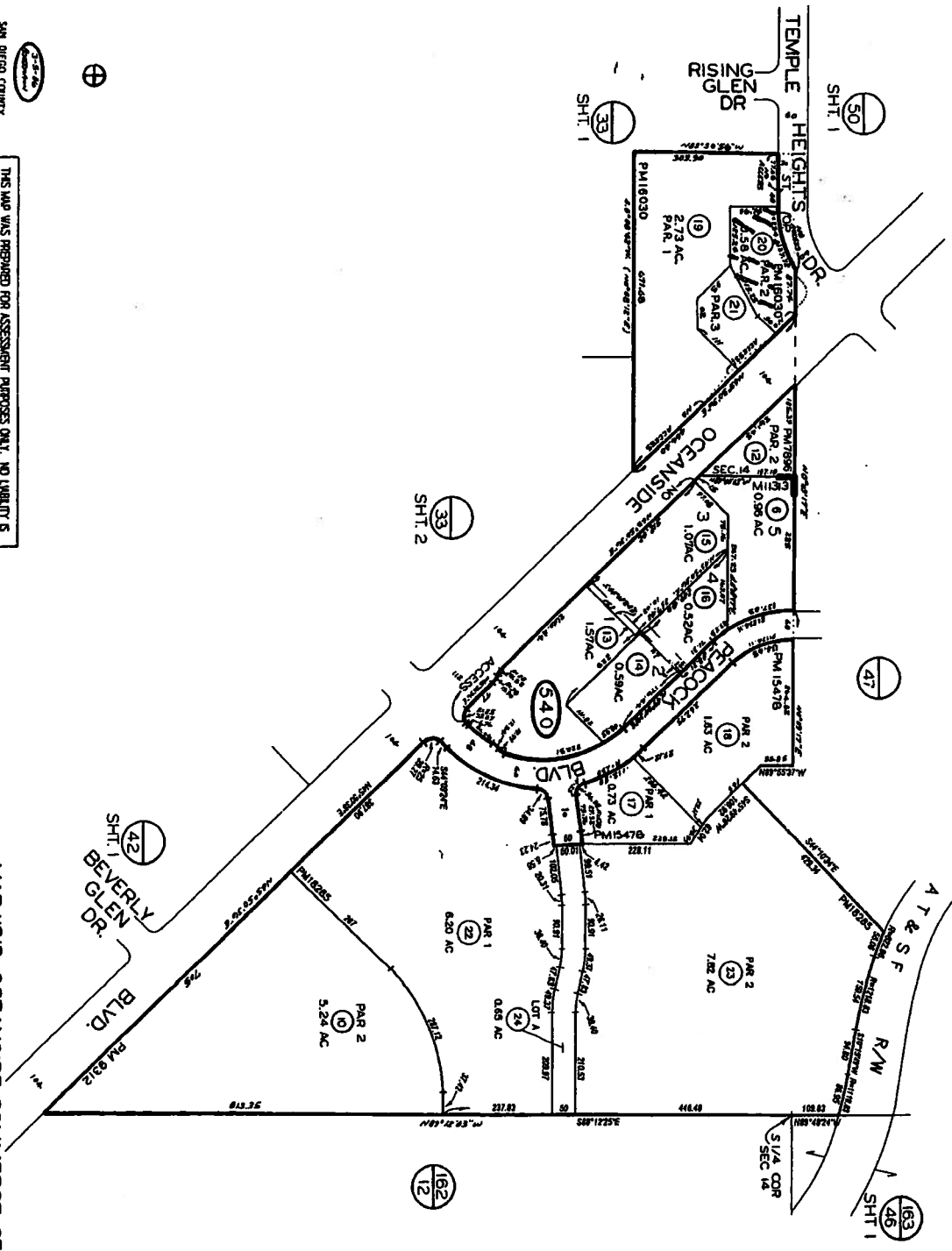
SCALE IN 1/16 OF AN INCH

2011-2012
SAN DIEGO COUNTY
ASSESSORS' MAP
BOOK 101 PAGE 54

THIS MAP WAS PREPARED FOR ASSESSMENT PURPOSES ONLY. NO LIABILITY IS ASSUMED FOR THE ACCURACY OF THE DATA SHOWN. ASSESSOR'S SPACES MAY NOT CORRELATE WITH LOCAL SUBDIVISION OR BUILDING ORDINANCES.

MAP 11313-OCEANSIDE COMMERCE CENTER UNIT NO.1
ROS 8065

SEP 03 1999



161-54

1" = 200'

CHANGES		8/17/99	SM
BLK OLD	NEW	TRICUT	
540	1-9	64/444	
1004	10-12	08/0487	
11	10-12	08/5697	
5-5	10-12	07/2688	
7-9	17/16/97	05/202	
11	10-21	07/4227	
1	10-21	00/5528	
1-5	22-24	00/1383	
1	10-21	00/1383	

1: OCCUPANCY OR