

**AGENDA**  
**OCEANSIDE DEVELOPER'S CONFERENCE**

**Tuesday, October 18, 2011, 10:00 a.m.**  
**Guajome Room**

1. 10:00 a.m. - 10:30 a.m.      Discussion of relocation of KCEO Radio Station towers located at 2766 Santa Fe Avenue.

**Zoning:** RE-B Residential Estate B  
**Land Use:** EB-R Estate B Residential  
**Neighborhood Area:** Guajome  
**Assessor Parcel Number:** 159-060-06  
**Contact Person:** Gary Gochberg  
**Tel.:** 707.364.5164  
**Email:** [garygochberg@yahoo.com](mailto:garygochberg@yahoo.com)

Attachments:

1. Maps
2. Project Description Letter
3. Proposed Elevations



## Project Description

Radio station KCEO is proposing to move one of the four existing towers approximately 492 feet South and West from its current location, to a new location on the same property, in order to modify its current signal coverage pattern and thereby better serve the population of the market. The Federal Communications Commission has approved this modification.

A signal pattern of an AM radio station is created by the alignment of its towers. A station with a single tower creates a 'non-directional' signal pattern, or a somewhat perfect circle of coverage. Multiple towers create various shapes of signal coverage, in order to create signal patterns that do not conflict with other radio stations. Moving Tower #4 from its current position to the proposed position will create better coverage for the listeners in the San Diego area.

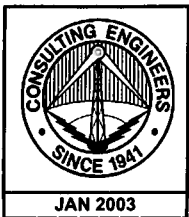
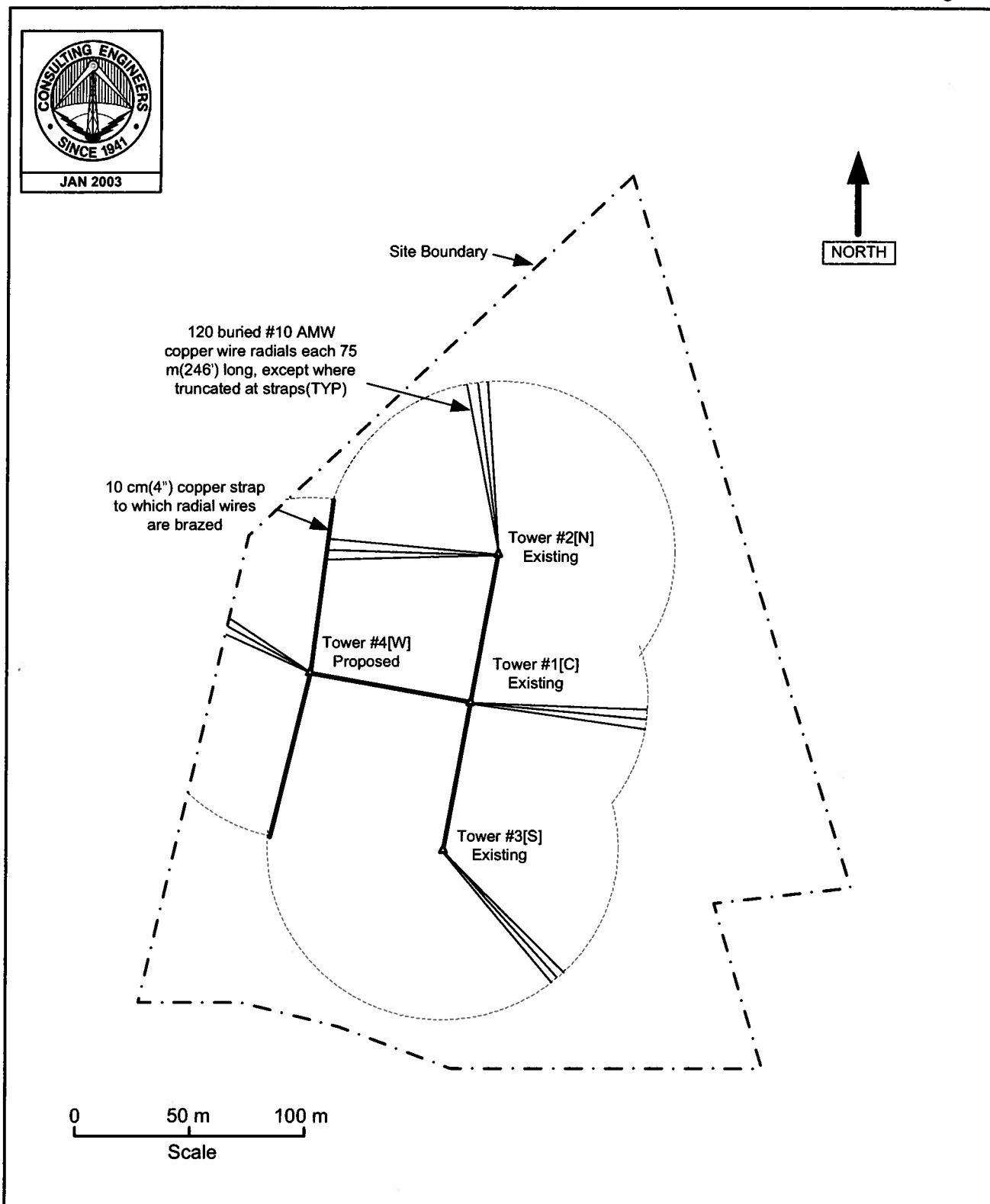
This proposed tower move will not change the use of the property, and it will not increase the traffic. A station engineer needs to inspect the equipment in the transmitter building approximately once a month. The towers are inspected annually.

Best Regards,

A handwritten signature in black ink that reads "Doug Sherman".

Douglas M. Sherman  
President

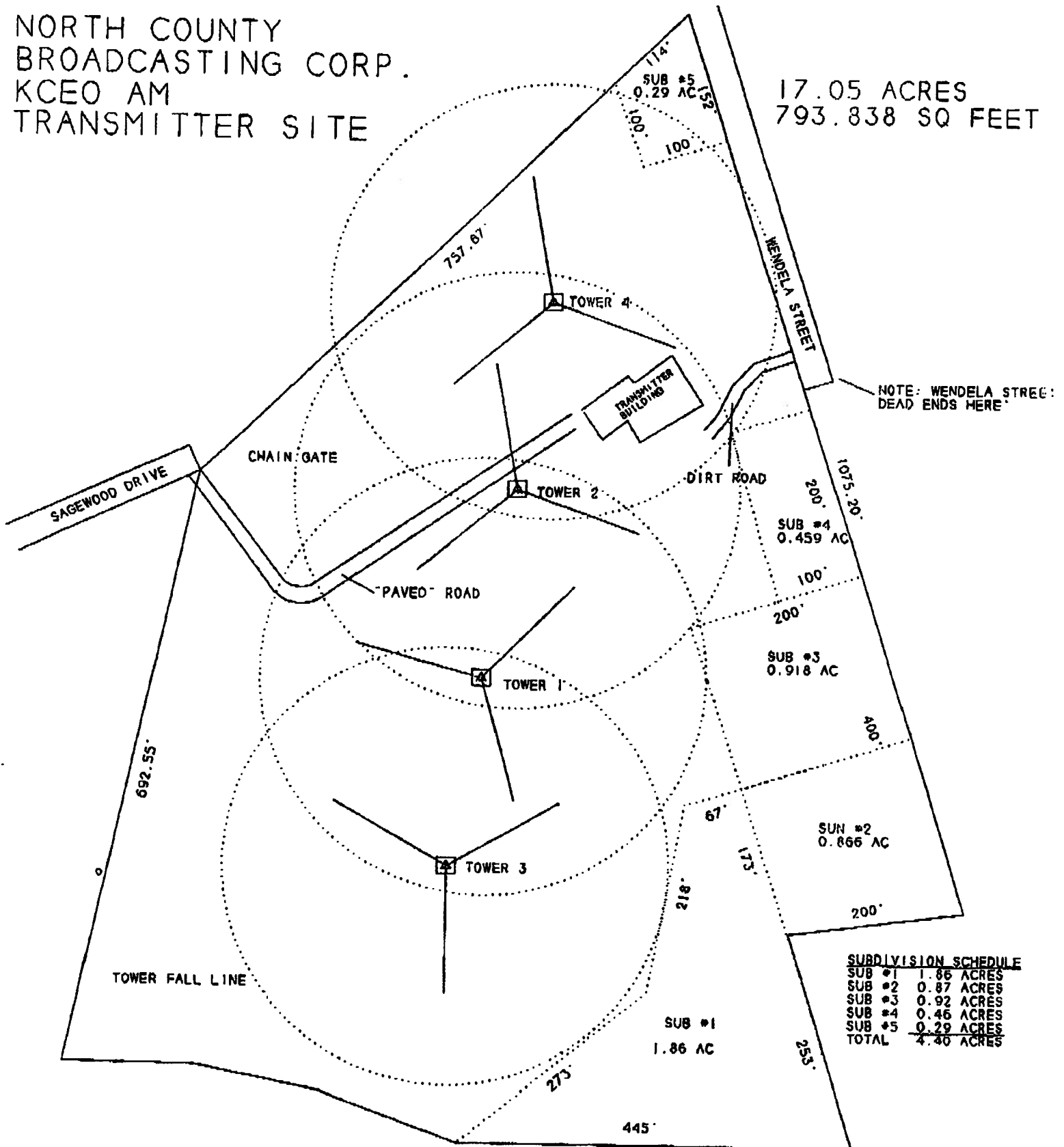
Figure 2



**PLAT OF TRANSMITTER SITE**  
**RADIO STATION KCEO**  
**VISTA, CALIFORNIA**  
**1000 KHZ 5.0 KW-D, 250 W-N U DA-2**  
du Treil, Lundin & Rackley, Inc. Sarasota, Florida

NORTH COUNTY  
 BROADCASTING CORP.  
 KCEO AM  
 TRANSMITTER SITE

17.05 ACRES  
 793.838 SQ FEET



NOTE: WENDELA STREET:  
 DEAD ENDS HERE

SUBDIVISION SCHEDULE	
SUB #1	1.86 ACRES
SUB #2	0.87 ACRES
SUB #3	0.92 ACRES
SUB #4	0.46 ACRES
SUB #5	0.29 ACRES
<b>TOTAL</b>	<b>4.40 ACRES</b>





Existing location of tower #4

Proposed (approx) location of tower #4

Tower 2

Tower 1

Tower 3

Hodges Rd

Wendela St

Sagewood Dr

33.23306-117.26917

© 2011 Google

Google

Imagery Date: 8/23/2010

1994

33°14'00.85" N 117°16'13.38" W elev 74 m

Eye alt 515 m



From Wendela St.



View West





View west from Sagewood -Tower 1 & 2

