

**AGENDA**  
**OCEANSIDE DEVELOPER'S CONFERENCE**

**Tuesday, November 13, 2012, 9:00 a.m.**  
**La Salina Conference Room**

1. 9:00 a.m. - 10:00 a.m.      Discussion of a proposed development project consist of nine two-story detached condominiums located on the southeast corner of South Myers and Kelly Street.

**Zoning: R-3 (Medium Density Residential)**  
**Land Use: Residential**  
**Neighborhood Area: South Oceanside**  
**Assessor Parcel Number: 153-251-40-00**  
**Contact Person: John La Raia**  
**Tel.: 619-308-2048**  
**Email: [john@citymark.com](mailto:john@citymark.com)**

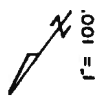
**Attachments:**

1. Maps
2. Project Description Letter
3. Proposed Elevations

10

CHANGES  
3-10-92 BTH

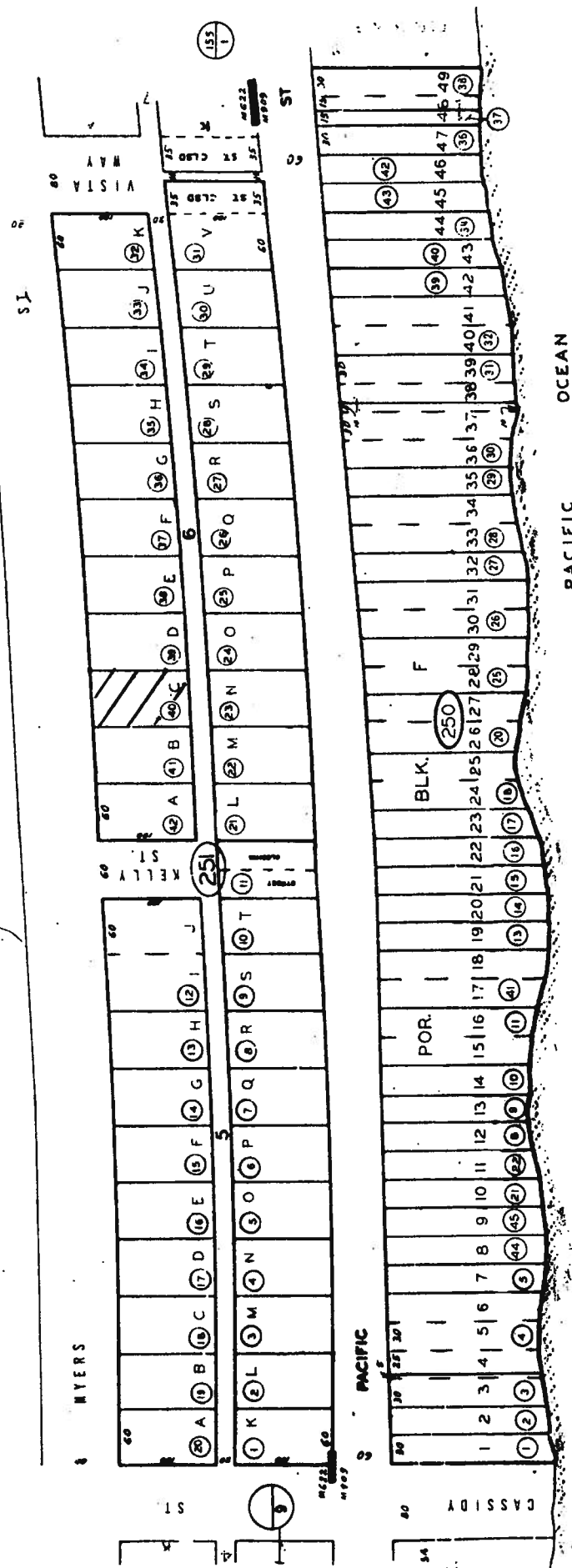
251	1128	41	77	1268	250	2744	41	77	1268
250	1128	41	77	1268	250	2744	41	77	1268
250	1128	41	77	1268	250	2744	41	77	1268
250	1128	41	77	1268	250	2744	41	77	1268
250	1128	41	77	1268	250	2744	41	77	1268
250	1128	41	77	1268	250	2744	41	77	1268
250	1128	41	77	1268	250	2744	41	77	1268
250	1128	41	77	1268	250	2744	41	77	1268
250	1128	41	77	1268	250	2744	41	77	1268
250	1128	41	77	1268	250	2744	41	77	1268



153 - 25

200

A. T. & S. F. R. R.



MAP 909 - OCEAN FRONT ADD  
MAP 622 - SOUTH OCEANVIEW REFTI FN 1890

RNS R77R

San Diego County Assessor's Map BK 153 PG 25 MAPPED FOR ASSESSMENT PURPOSES ONLY

251  
2-20-92

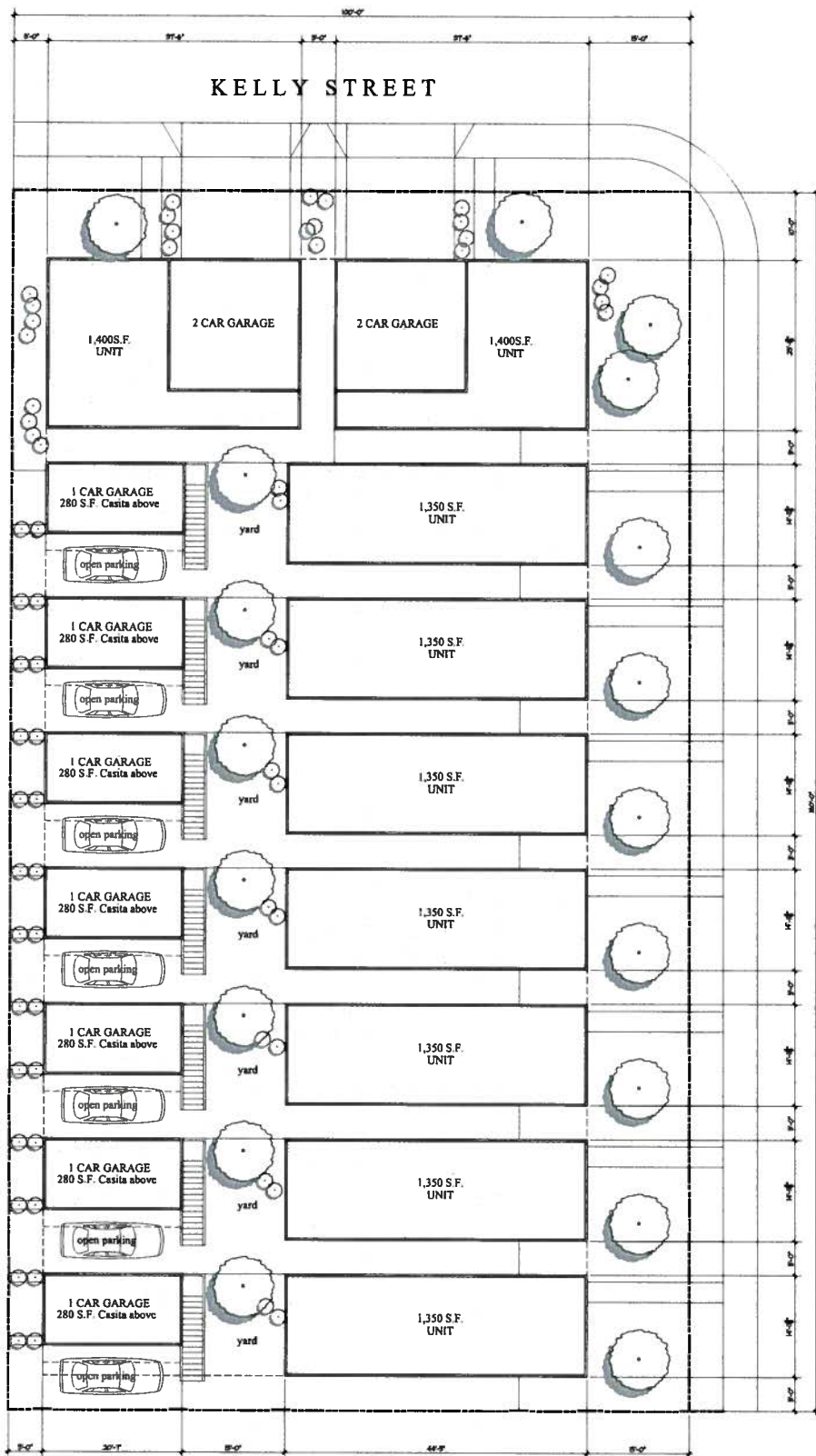
## Oceanside 9

CityMark Development would like to present a proposed development project on the Southeast corner of South Myers and Kelly Street in Oceanside, CA 92054. The associated parcels are 153-251-40, -41, -42.

The project will consist of nine two-story detached condos each with two parking spaces. Seven of the units will be 1,630 sq ft. Of the 1,630 sq ft, 1,350 sq ft will be in the main structure and 280 sq ft will be located above the garage and parking area for each of those units. Those units will each have yards between the garages and the house. Two of the units will be 1,400 sq ft with attached two car garages.

The project meets the zoning requirements of the 1986 Oceanside zoning code

Thank you for taking the time to review the conceptual plan for this project.



SOUTH PACIFIC STREET

SOUTH MEYERS STREET

KELLY STREET

OCEANSIDE 9

CityMark



11.06.12

Units 9 - 2 Story  
Parking 18

