

**AGENDA**  
**OCEANSIDE DEVELOPER'S CONFERENCE**

**Tuesday, March 5, 2013, 10:00 a.m.**  
**Guajome Conference Room**

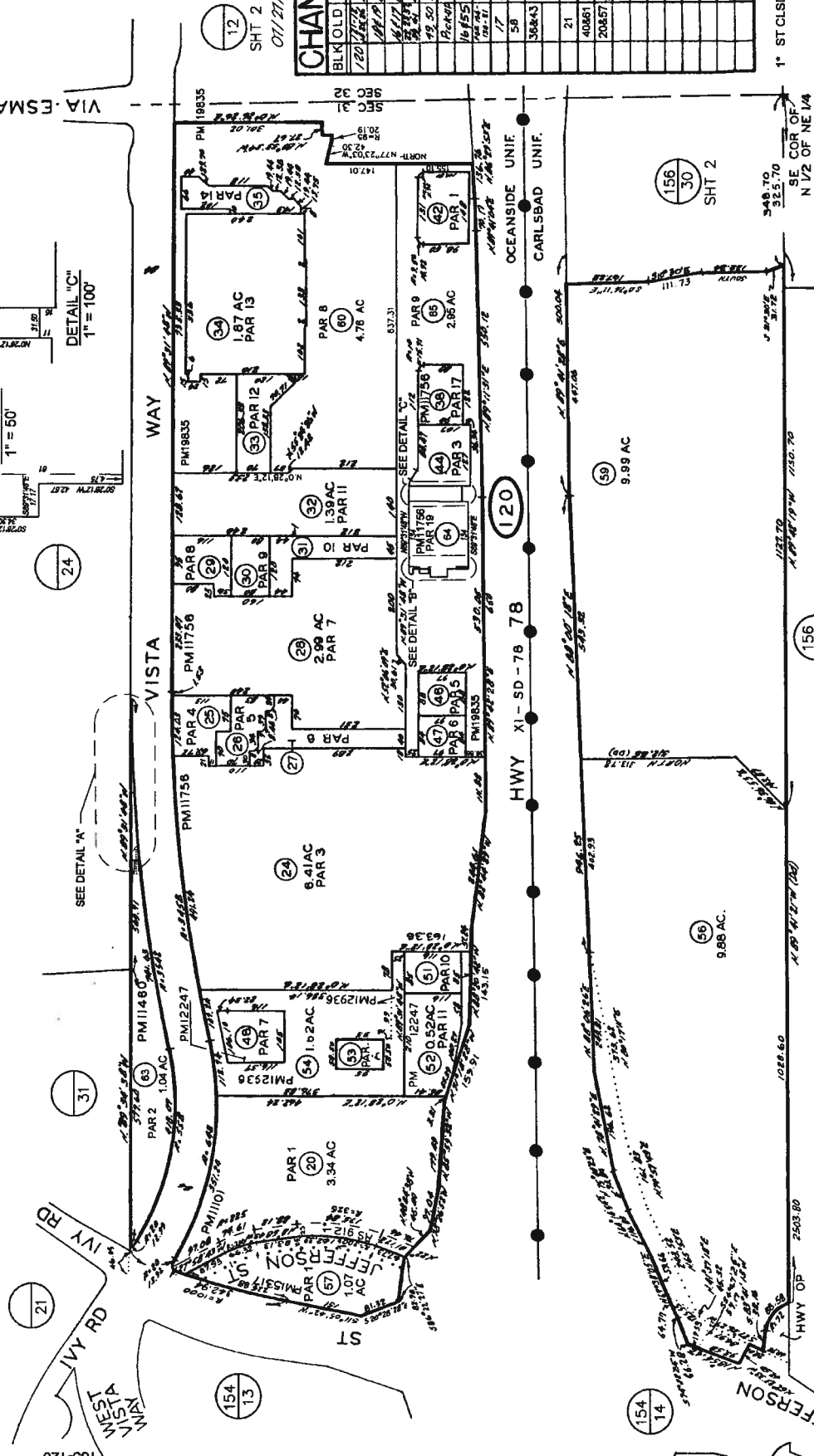
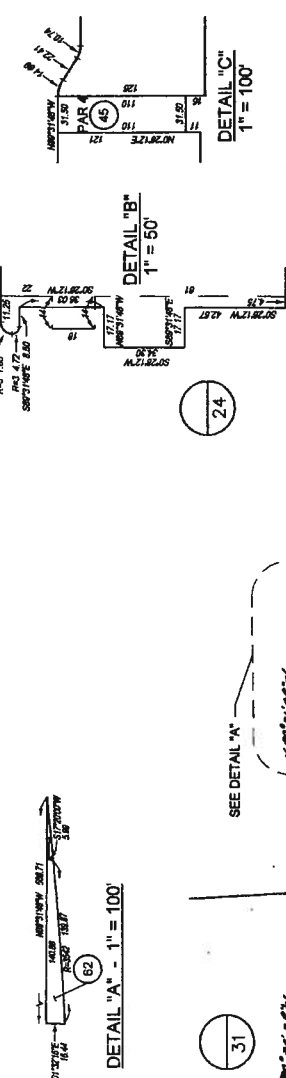
1. 10:00 a.m. - 11:00 a.m.      Discussion of an 85,000 square foot 3 story medical office building located at 2205 Vista Way.

**Zoning: CC (Community Commercial)**  
**Land Use: CC (Community Commercial)**  
**Neighborhood Area: Fire Mountain**  
**Assessor Parcel Number: 165-120-20, 57**  
**Contact Person: Glen Conte**  
**Tel.: 858-436-4734**  
**Email: [conte.glenn@scrippshealth.org](mailto:conte.glenn@scrippshealth.org)**

Attachments:

1. Maps
2. Project Description Letter
3. Proposed Elevations

165-12  
SHT 1 OF 2  
1" = 200'



CHANGES	
BLK	OLD NEW YR CUT
1	1983
2	1983
3	1983
4	1983
5	1983
6	1983
7	1983
8	1983
9	1983
10	1983
11	1983
12	1983
13	1983
14	1983
15	1983
16	1983
17	1983
18	1983
19	1983
20	1983
21	1983
22	1983
23	1983
24	1983
25	1983
26	1983
27	1983
28	1983
29	1983
30	1983
31	1983
32	1983
33	1983
34	1983
35	1983
36	1983
37	1983
38	1983
39	1983
40	1983
41	1983
42	1983
43	1983
44	1983
45	1983
46	1983
47	1983
48	1983
49	1983
50	1983
51	1983
52	1983
53	1983
54	1983
55	1983
56	1983
57	1983
58	1983
59	1983
60	1983
61	1983
62	1983

THIS MAP WAS PREPARED FOR ASSESSMENT PURPOSES ONLY. NO LIABILITY IS ASSUMED FOR THE ACCURACY OF THE DATA SHOWN. ASSESSOR'S PARCELS MAY NOT COMPLY WITH LOCAL SUBDIVISION OR BUILDING ORDINANCES.

SAN DIEGO COUNTY  
ASSESSOR'S MAP  
BOOK 165 PG 12 SHT 1

SEC 31 - T11S - R4W - POR NE 1/4  
ROS 8356, 13786, 16299

SHT 1

SHT 2

SHT 2

1" ST CLSD



**Facilities Design & Construction  
Scripps Health**

10130 Sorrento Valley Road  
Suite C, SV100  
San Diego, CA 92121-1643

Tel 858-587-4400 Fax 858-587-4490

February 22, 2013

**Scripps Health  
Facilities Design & Construction  
10130 Sorrento Valley Road, Suite C  
San Diego, CA 92121**

**Development Services  
City of Oceanside  
300 North Coast Highway  
Oceanside, CA 92054**

Thank you for the opportunity to meet with your team at the Developer's Conference which is scheduled at your premises on March 5, 2013 at 10:00 a.m. The following information about our proposed project is provided:

- Location: 2205 Vista Way, Oceanside CA 92054
- APN : 165-120-20-00 & 165-120-57-00
- Description: The project consists of a 3-story, 85,000 – 90,000 sf medical office building, with OSHPD-3 licensed services with the first floor area at approximately 35,000 sf and two upper floors of approximately 25,000 sf. The project also includes 2 to 3 story parking structure, and surface parking.
- Proposed Elevations: Perspective View attached.
- Conceptual site plan: Site Plan attached.

We look forward to a productive Developer's Meeting and a successful partnership with the City of Oceanside in the future.

Sincerely,

A handwritten signature in black ink, appearing to read "Bruce Rainey", written over a horizontal line.

**Bruce Rainey  
Corporate Vice President  
Facilities Design & Construction  
Scripps Health**

• Scripps Health •



