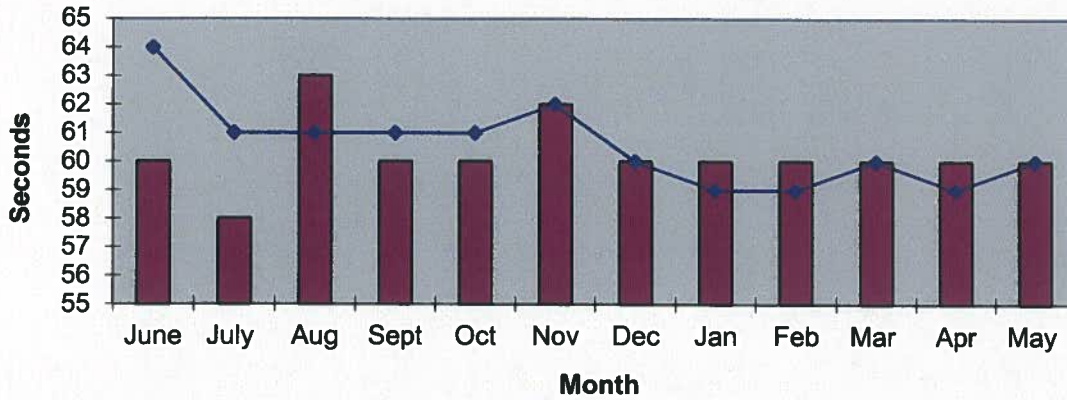
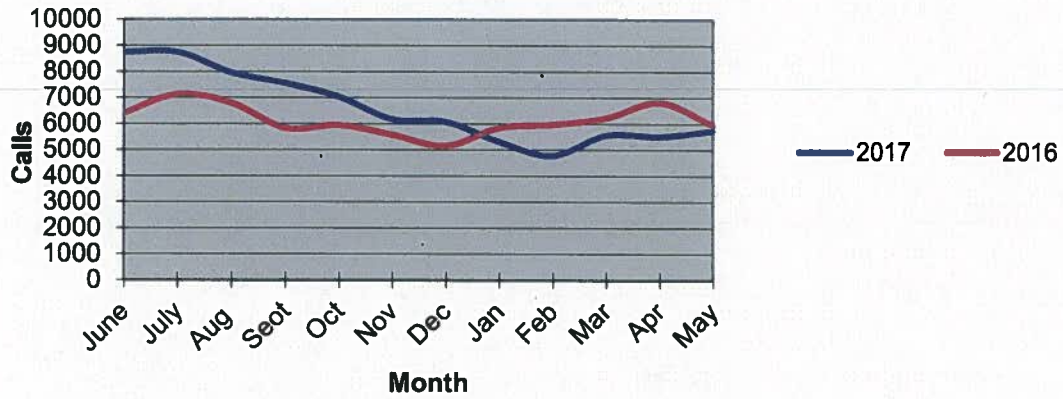


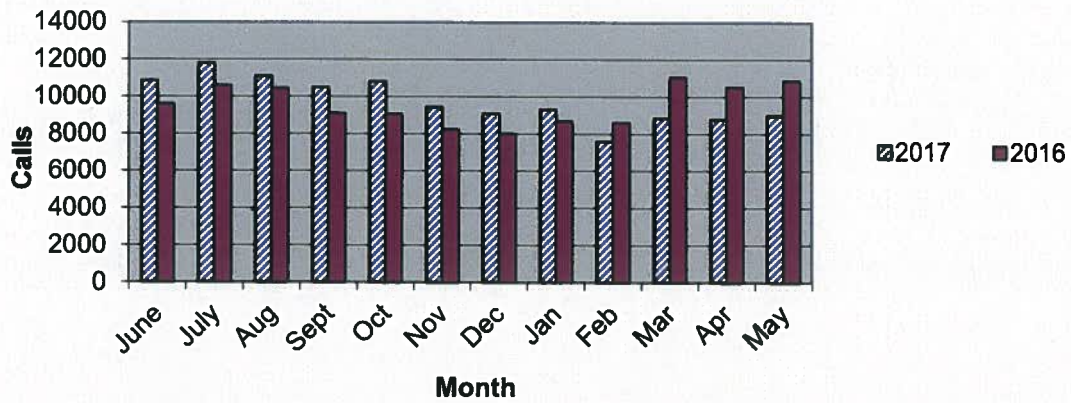
Priority 1 Dispatch Times- Police



911 Calls



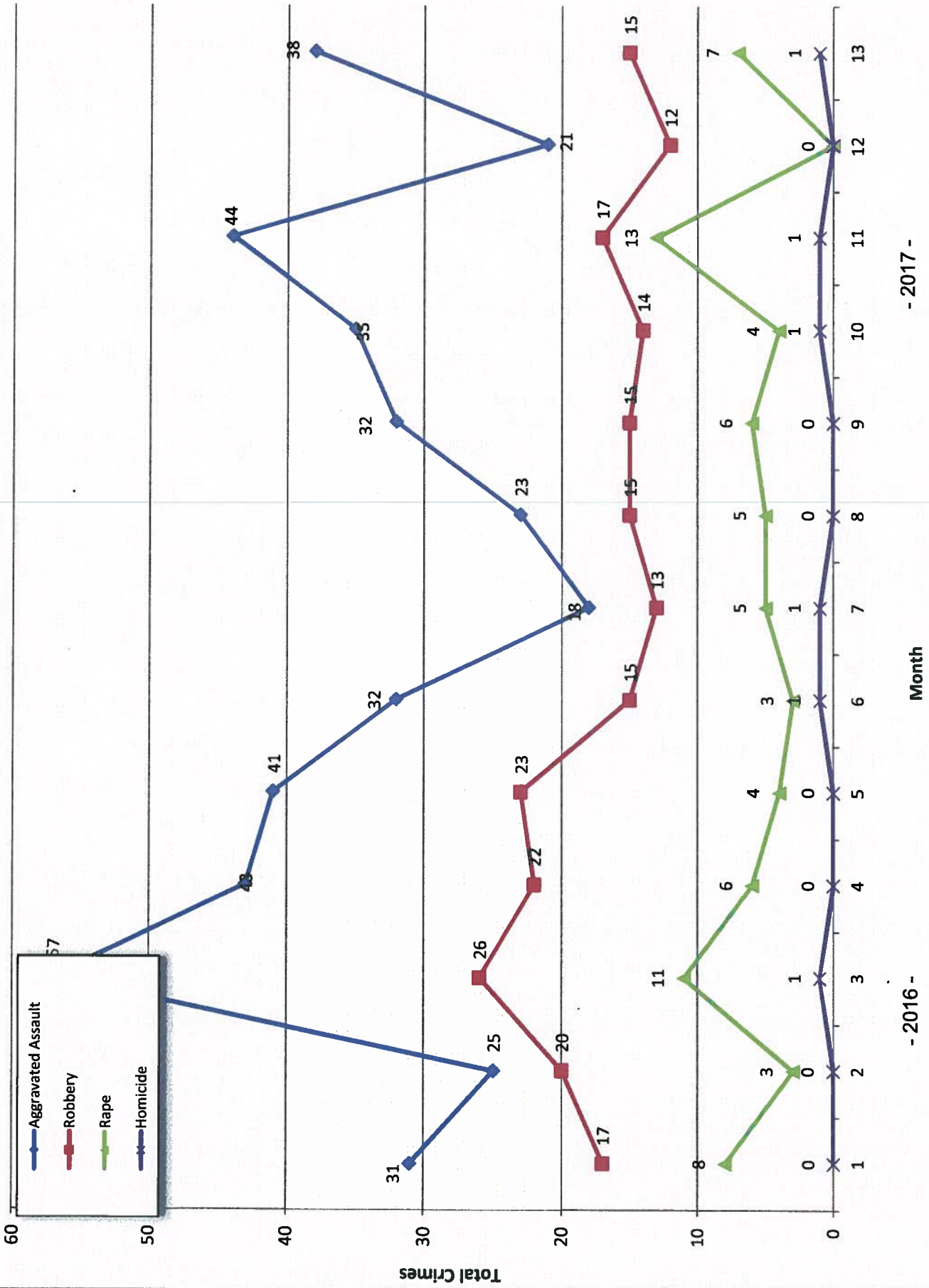
Calls for Service



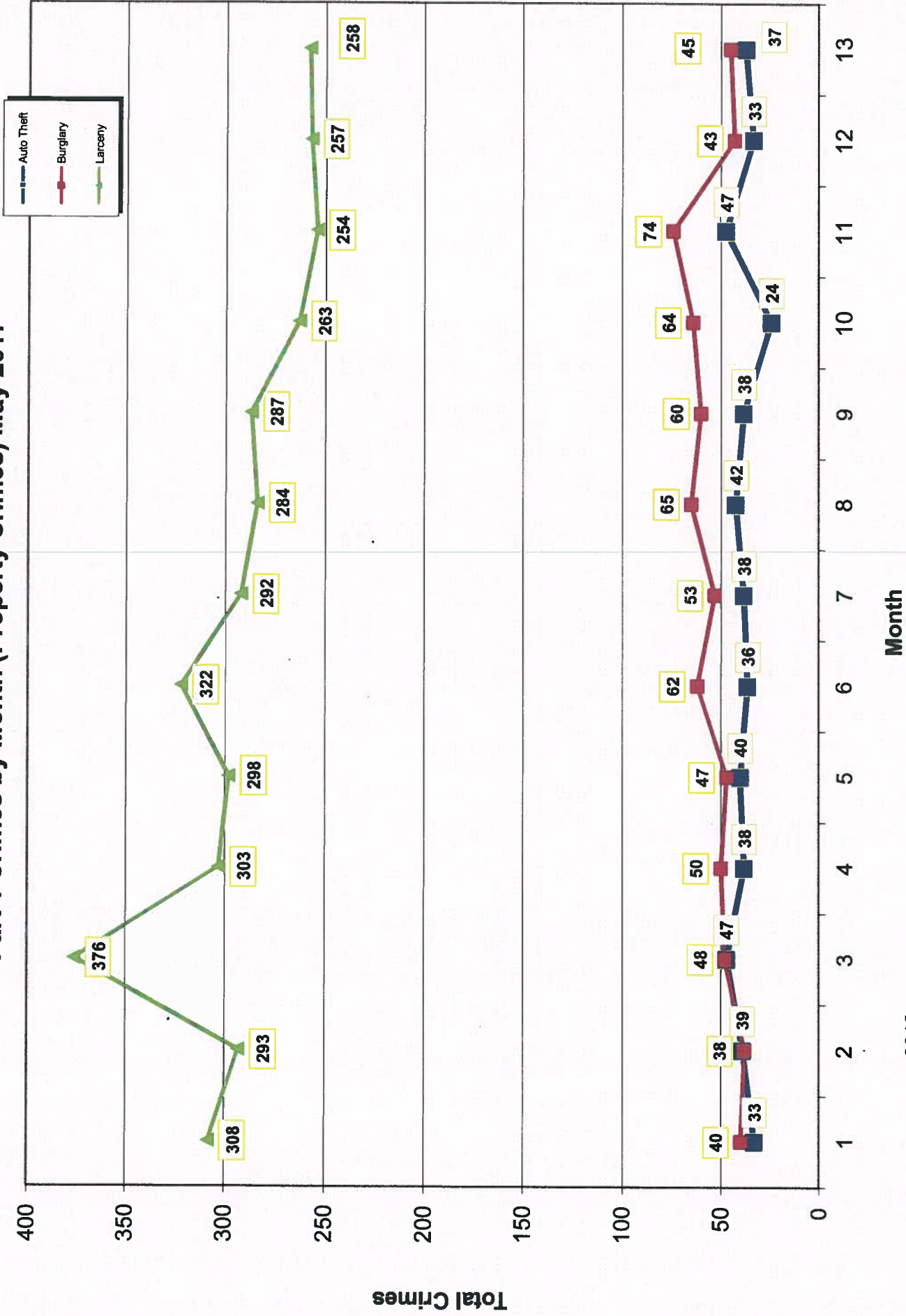
**OCEANSIDE POLICE DEPARTMENT
FBI INDEX CRIMES**

	MONTHLY CASE ACTIVITY 2017												YEAR TO DATE COMPARISON		% CHANGE	
	JAN	FEB	MAR	APR	MAY	JUN	JUL	AUG	SEP	OCT	NOV	DEC	2016	2017 CHANGE		
1. HOMICIDE	0	1	1	0	1								1	3	2	200.0%
	0	0	2	0	0								0	2	2	0.0%
2. RAPE	6	4	13	0	7								26	30	4	15.4%
	2	3	6	1	1								3	13	10	333.3%
3. ROBBERY	15	14	17	12	15								63	73	10	15.9%
	8	6	6	1	5								18	26	8	44.4%
4. AGGR. ASSAULT	32	35	44	21	38								162	170	8	4.9%
	14	13	17	0	17								81	61	-20	-24.7%
5. BURGLARY	60	64	74	43	45								200	286	86	43.0%
	2	6	4	7	8								15	27	12	80.0%
6. LARCENY THEFT	287	263	254	257	258								1382	1319	-63	-4.6%
	10	16	20	18	19								169	83	-86	-50.9%
7. AUTO THEFT	38	24	47	33	37								209	179	-30	-14.4%
	2	3	3	5	0								10	13	3	30.0%
TOTAL INDEX CRIMES	438	405	450	366	401								2043	2060	17	0.8%
	38	47	58	32	50								296	225	-71	-24.0%
TOTAL PERSON CRIMES	53	54	75	33	61								251	276	25	10.0%
	24	22	31	2	23								102	102	0	0.0%
TOTAL PROPERTY CRIMES	385	351	375	333	340								1791	1784	-7	-0.4%
	14	25	27	30	27								194	123	-71	-36.6%
ARSON	4	2	0	2	6								6	14	8	133.3%
Y-T-D Loss \$72,777.00	0	0	0	0	0								1	0	-1	-100.0%

Part 1 Crimes by Month (Violent Crimes) May 2017



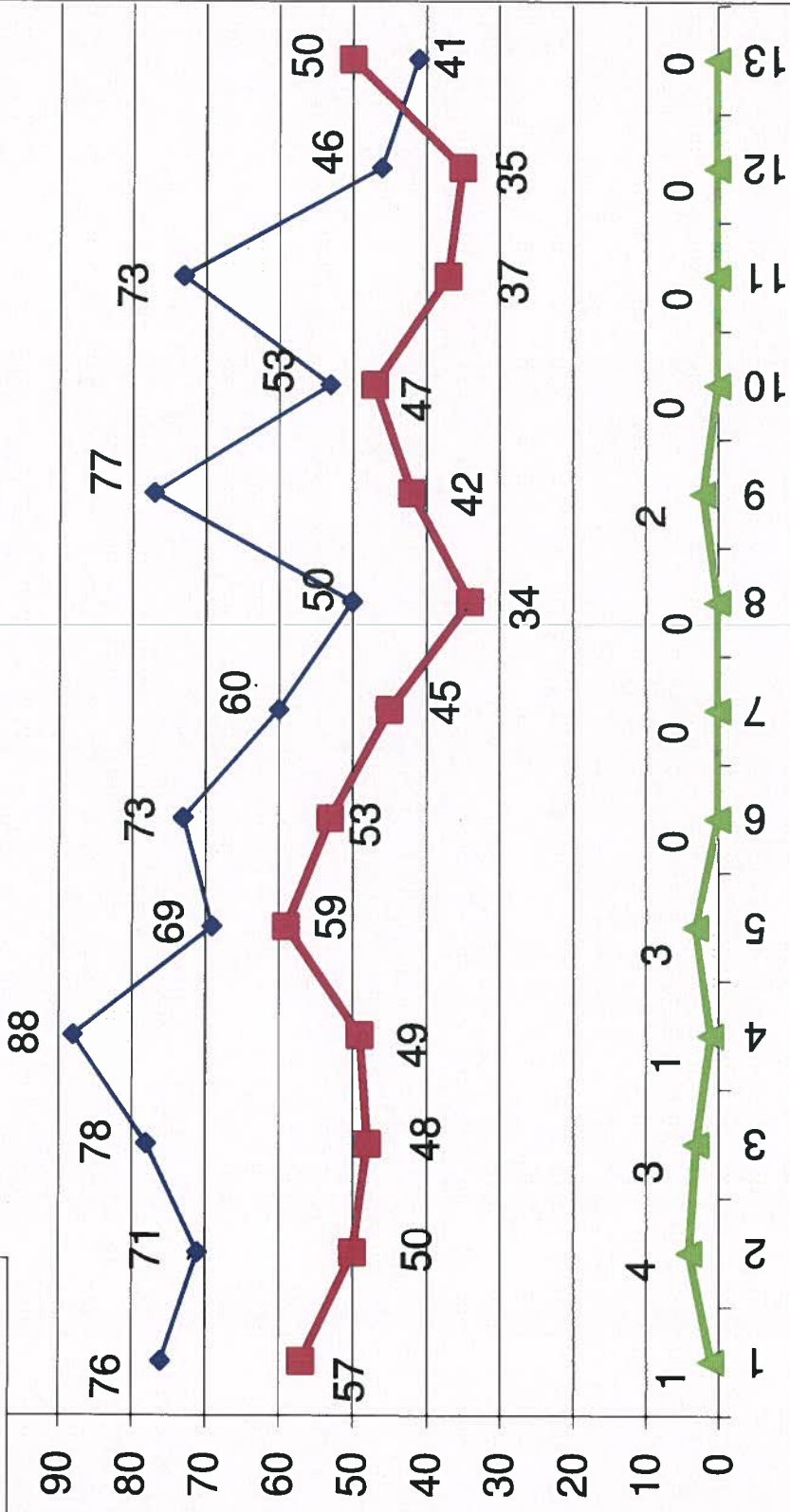
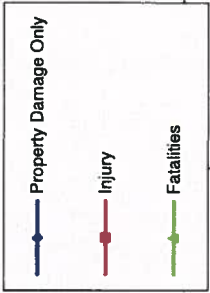
Part 1 Crimes by Month (Property Crimes) May 2017



- 2017 -

- 2016 -

Traffic Collisions May 2016 - May 2017





UCR Crimes by GeoArea

Required Parameters
 Reporting Period: May 2017
 Agency: OCEANSIDE

Optional Parameters
 Geographical Area: All Beats
 Group by: Agency Select by: Neighborhood

Prior Report Number: S1STA120

Neighborhood	MURDER	RAPE (HISTORICAL)	RAPE (HISTORICAL)	ROBBERY—	AGGRVD	VIOLENT	BURGLARY—	LARCENY—THEFT—	M.VEH	PROPERTY	CRIME	CAR				
			ARMED	ST/ARM	ASULT	CRM TL	RESID	NRESID	TOTAL	\$400+	<\$400	TOTAL	THEFT	CRM TL	IDX TL	PROWL
Agency = OCEANSIDE																
AIRPORT	0	0	0	0	1	1	1	0	1	1	3	4	1	6	7	3
EASTSIDE/CAPISTRANO	0	1	0	0	4	5	1	0	1	0	16	16	3	20	25	6
FIRE MOUNTAIN	0	1	0	0	4	5	0	2	2	12	20	32	4	38	43	14
GUAJOME	0	0	0	1	0	1	0	0	0	4	14	18	1	19	20	6
IVY RAN/RAN DEL ORO	0	2	0	1	2	6	1	6	7	9	17	26	4	37	43	16
LAKE	0	0	0	0	0	0	0	2	2	3	8	11	1	14	14	0
MIRA COSTA	0	0	0	0	5	5	1	3	4	9	12	21	5	30	35	16
MISSN MESA/LOMA ALTA	0	1	1	2	3	8	1	3	4	12	26	38	1	43	51	20
MORRO HILLS	0	0	0	0	1	1	0	0	0	1	3	4	0	4	5	3
NORTH VALLEY	0	0	0	1	3	4	1	0	1	0	4	4	5	10	14	2
OCEAN HILLS	0	0	0	0	2	2	1	0	1	4	1	5	0	6	8	1
OCEANA	0	0	0	0	0	0	0	0	0	0	2	2	0	2	2	1
SAN LUIS REY	0	1	1	2	4	7	3	0	3	8	5	13	4	20	27	5
SOUTH OCEANSIDE	0	0	0	1	2	4	5	4	9	4	6	10	1	20	24	4
TOWNSITE	1	2	2	0	4	9	7	3	10	14	29	43	5	58	67	20
TRI CITY	0	0	0	0	2	2	0	0	0	3	8	11	2	13	15	7
UNKNOWN	0	-1	-1	0	2	1	0	0	0	0	0	0	0	0	1	0
SUB-TOTAL	1	7	3	8	7	38	61	23	45	84	174	258	37	340	401	124
GRAND TOTALS	1	7	3	8	7	38	61	23	45	84	174	258	37	340	401	124



UCR Crimes by GeoArea

Required Parameters
 Reporting Period: Jan 2017 to May 2017
 Agency: OCEANSIDE

Optional Parameters
 Geographical Area: All Beats
 Group by: Agency Select by: Neighborhood

Prior Report Number: S1STA120

Neighborhood	MURDER	RAPE	RAPE (HISTORICAL)	ROBBERY--	ARMED	ST/ ARM	ASULT	VIOLENT	BURGLARY----	LARCENCY-THEFT---	TOTAL	\$400+	<\$400	TOTAL	THEFT	CRM TL	IDX TL	CRIME	CAR
Agency = OCEANSIDE																			
AIRPORT	0	0	0	0	0	1	9	10	4	3	7	10	16	26	5	38	48	16	
EASTSIDE/CAPISTRANO	0	1	0	0	2	1	17	21	4	6	10	13	31	44	7	61	82	19	
FIRE MOUNTAIN	0	2	1	1	4	1	10	17	3	10	13	58	123	181	13	207	224	72	
GUAJOME	0	2	2	2	2	1	2	7	4	2	6	25	45	70	5	81	88	30	
IVY RAN/RAN DEL ORO	0	7	3	3	4	3	18	32	11	27	38	47	100	147	24	208	241	98	
LAKE	0	0	0	0	2	2	-8	-4	12	7	19	9	43	52	7	78	74	11	
MIRA COSTA	0	1	1	1	4	2	10	17	21	26	47	40	76	116	18	181	198	93	
MISSN MESA/LOMA ALTA	0	4	4	4	6	5	13	28	8	13	21	43	85	128	16	165	193	72	
MORRO HILLS	0	0	0	0	1	0	2	3	1	0	1	4	7	11	1	13	16	6	
NORTH VALLEY	0	1	0	0	1	1	7	10	10	-1	9	15	24	39	12	60	70	23	
OCEAN HILLS	0	0	0	0	0	0	2	2	4	1	5	9	6	15	1	21	23	5	
OCEANA	0	0	0	0	0	1	1	2	2	1	3	8	13	21	2	26	28	12	
SAN LUIS REY	0	4	3	3	3	3	19	29	15	6	21	33	56	89	22	132	161	47	
SOUTH OCEANSIDE	1	1	1	1	3	2	8	15	11	11	22	29	41	70	4	96	111	34	
TOWNSITE	2	4	4	4	7	11	43	67	34	23	57	90	168	258	27	342	409	121	
TRI CITY	0	2	1	1	-1	1	15	17	4	3	7	13	37	50	15	72	89	27	
UNKNOWN	0	1	1	1	0	0	2	3	0	0	0	1	1	2	0	2	5	1	
SUB-TOTAL	3	30	21	38	35	35	170	276	148	138	286	447	872	1,319	179	1,784	2,060	687	
GRAND TOTALS	3	30	21	38	35	35	170	276	148	138	286	447	872	1,319	179	1,784	2,060	687	