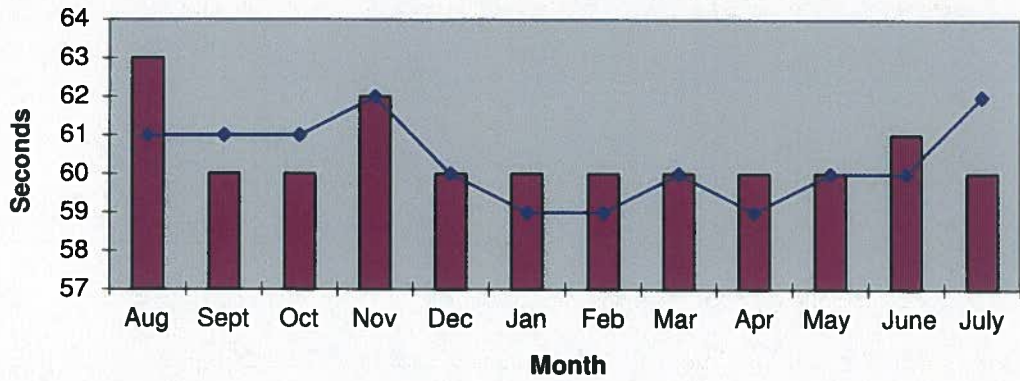
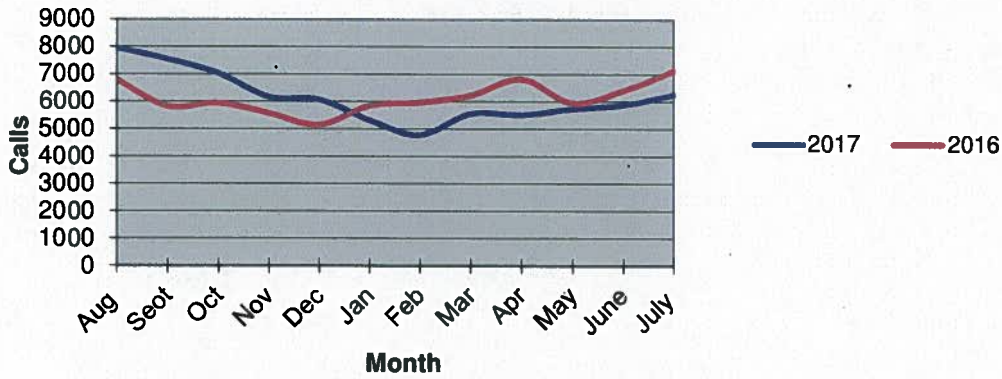


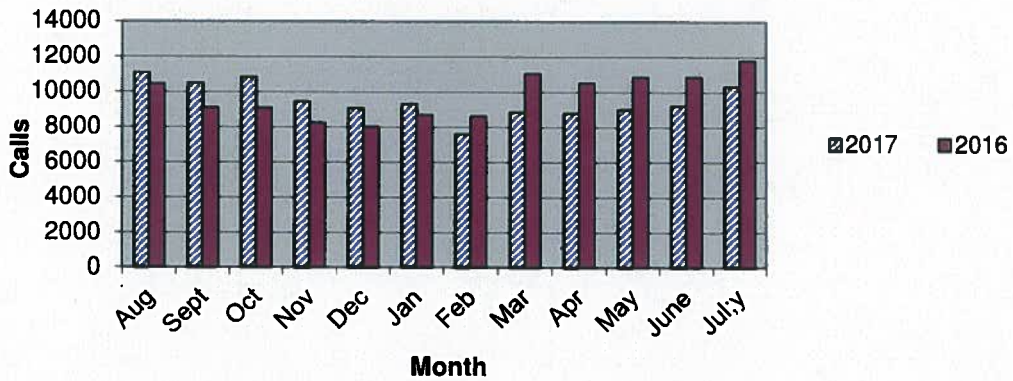
Priority 1 Dispatch Times- Police



911 Calls



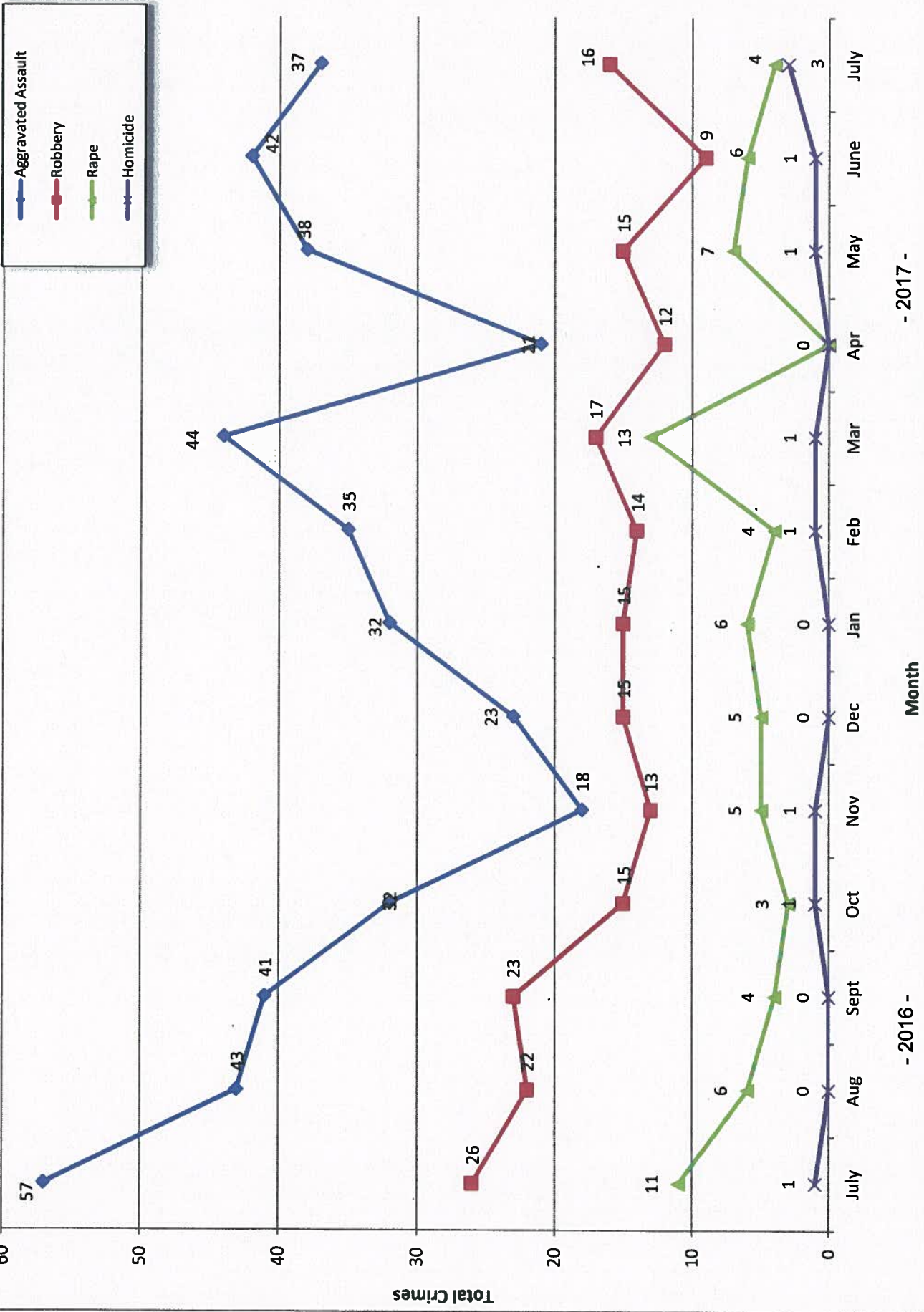
Calls for Service



**OCEANSIDE POLICE DEPARTMENT
FBI INDEX CRIMES**

	MONTHLY CASE ACTIVITY 2017												YEAR TO DATE COMPARISON			% CHANGE
	JAN	FEB	MAR	APR	MAY	JUN	JUL	AUG	SEP	OCT	NOV	DEC	2016	2017	CHANGE	
	Actual Cleared	Actual Cleared	Actual Cleared	Actual Cleared	Actual Cleared	Actual Cleared	Actual Cleared	Actual Cleared	Actual Cleared	Actual Cleared	Actual Cleared	Actual Cleared	Actual Cleared	Actual Cleared	Actual Cleared	
1. HOMICIDE	0	1	1	0	1	1	3						4	7	3	75.0%
2. RAPE	6	4	13	0	7	6	4						29	40	11	37.9%
3. ROBBERY	8	6	6	1	5	3	6						26	35	9	34.6%
4. AGGR. ASSAULT	32	35	44	21	38	42	37						256	249	-7	-2.7%
5. BURGLARY	60	64	74	43	45	31	56						300	373	73	24.3%
6. LARCENY THEFT	287	263	254	257	258	249	229						1930	1797	-133	-6.9%
7. AUTO THEFT	38	24	47	33	37	36	41						274	256	-18	-6.6%
TOTAL INDEX CRIMES	438	405	450	366	401	374	386						2889	2820	-69	-2.4%
TOTAL PERSON CRIMES	53	54	75	33	61	58	60						385	394	9	2.3%
TOTAL PROPERTY CRIMES	385	351	375	333	340	316	326						2504	2426	-78	-3.1%
ARSON	4	2	0	2	6	2	1						9	17	8	88.9%
Y-T-D Loss \$118,278.00	0	0	0	0	0	0	2						3	2	-1	-33.3%

Part 1 Crimes by Month (Violent Crimes) July 2017

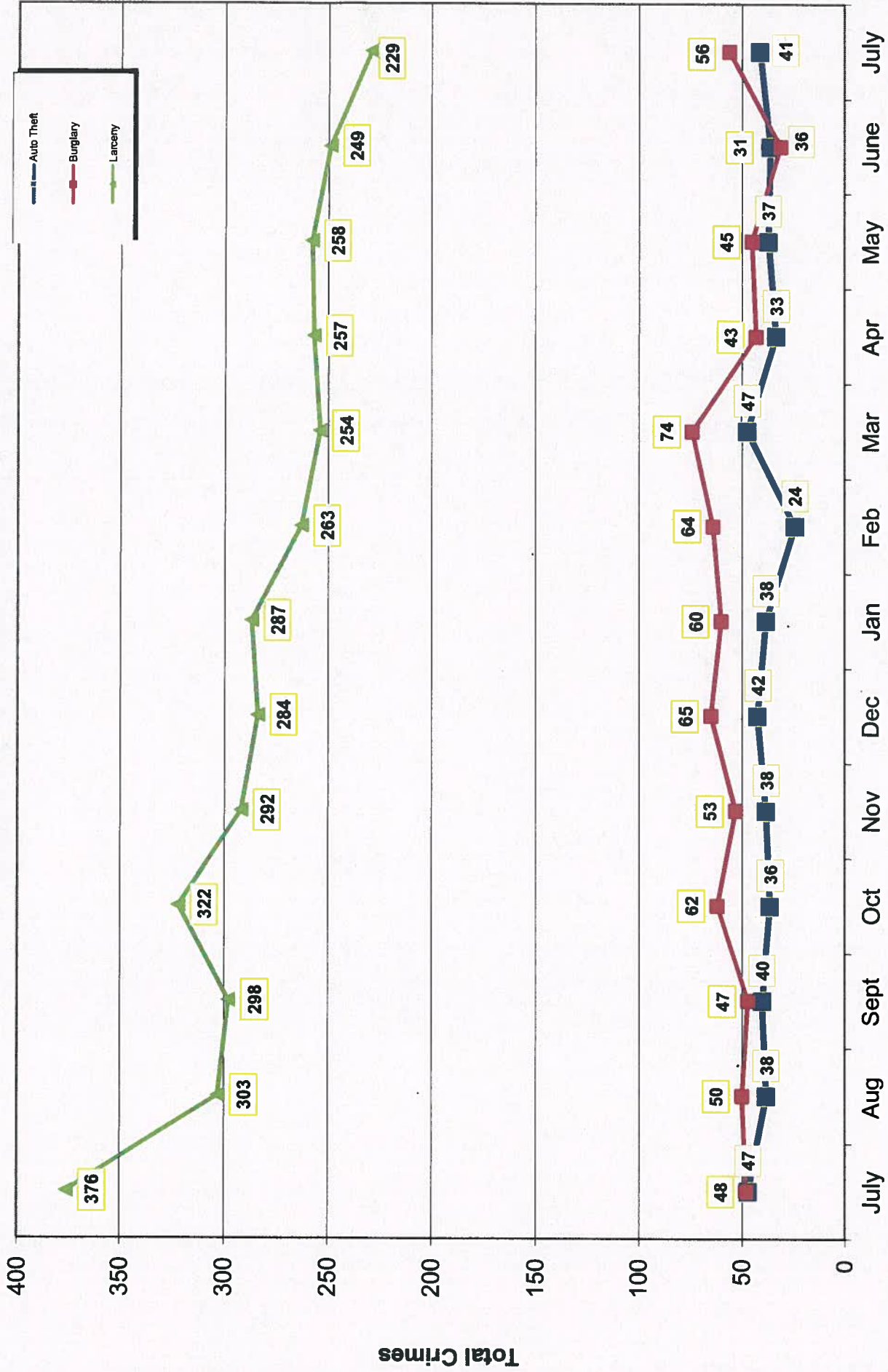


- 2017 -

Month

- 2016 -

Part 1 Crimes by Month (Property Crimes) July 2017

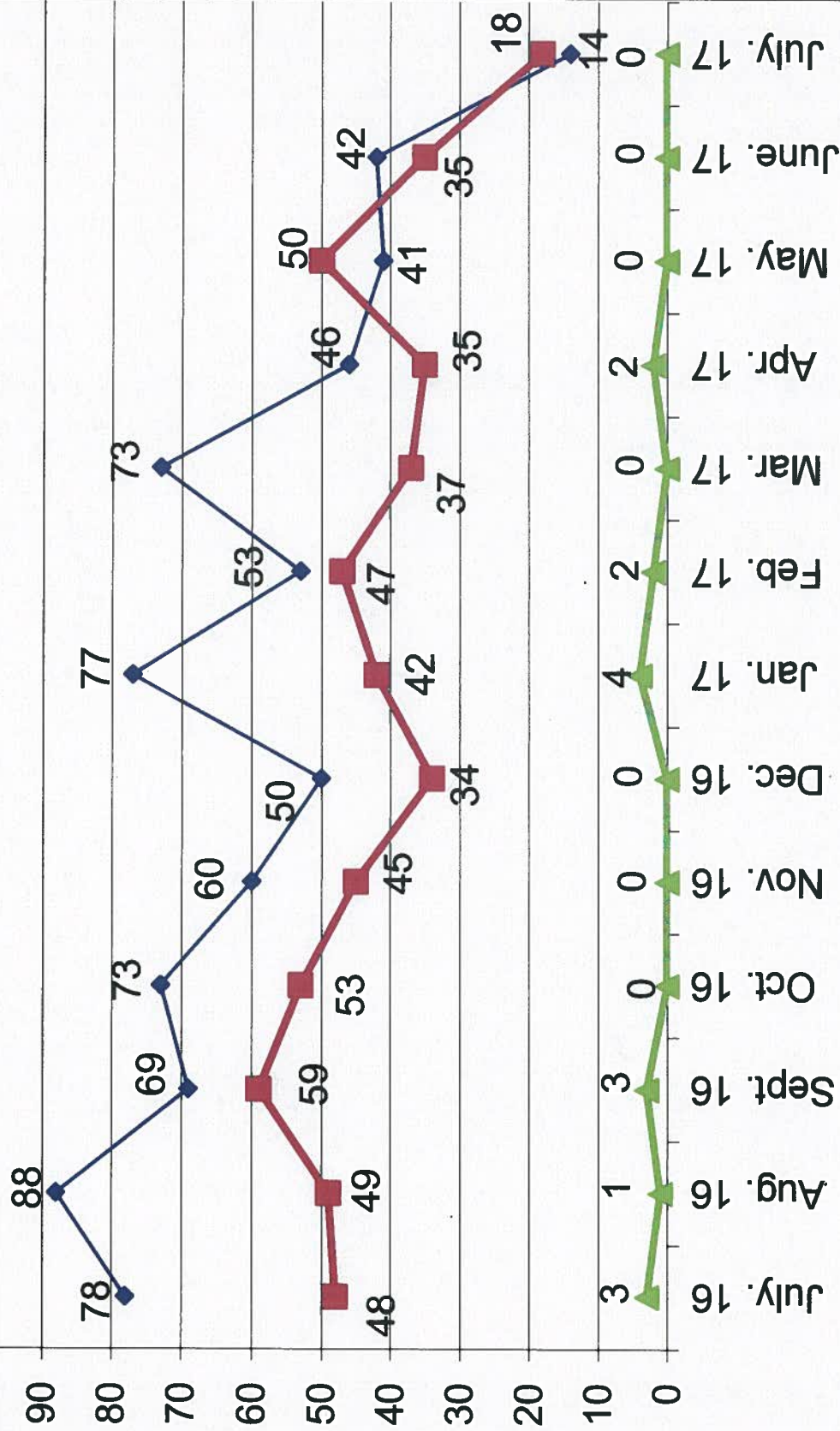
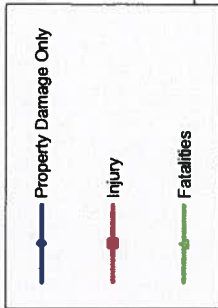


Month

- 2016 -

- 2017 -

Traffic Collisions July 2016 - July 2017





UCR Crimes by GeoArea

Required Parameters
 Reporting Period: Jul 2017
 Agency: OCEANSIDE

Optional Parameters
 Geographical Area: All Beats
 Group by: Agency Select by: Neighborhood

Prior Report Number: S1STA120

Neighborhood	MURDER	RAPE (HISTORICAL)	RAPE (HISTORICAL)	ROBBERY--	AGGRVD	VIOLENT	---BURGLARY---	---LARCENCY-THEFT---	M.VEH	PROPERTY	CRIME	CAR					
				ARMED	ASULT	CRM/TL	RESID	NRESID	TOTAL	\$400+	<\$400	TOTAL	THEFT	CRM TL	IDX TL	PROWL	

Agency = OCEANSIDE																	
AIRPORT	0	0	0	0	0	2	2	1	3	4	0	1	1	2	7	9	0
EASTSIDE/CAPISTRANO	0	0	0	2	1	6	9	0	0	0	4	9	13	2	15	24	10
FIRE MOUNTAIN	0	0	0	0	1	3	4	1	2	3	10	15	25	1	29	33	8
GUAJOME	0	0	0	0	1	0	1	1	0	1	6	12	18	0	19	20	9
IVY RAN/RAN DEL ORO	1	1	0	0	0	5	7	4	3	7	13	18	31	9	47	54	21
LAKE	0	0	0	0	0	1	1	0	1	1	2	9	11	4	16	17	1
MIRA COSTA	0	0	0	0	1	-1	0	2	6	8	4	4	8	1	17	17	6
MISSN MESALOMA ALTA	0	1	0	1	0	0	2	3	0	3	7	15	22	3	28	30	15
MORRO HILLS	0	0	0	0	0	1	1	0	1	1	1	1	2	0	3	4	2
NORTH VALLEY	1	1	1	0	0	2	4	2	0	2	2	3	5	2	9	13	3
OCEAN HILLS	0	0	0	0	0	2	2	0	0	0	2	1	3	1	4	6	2
OCEANA	0	0	0	0	0	0	0	0	0	0	0	3	3	0	3	3	3
SAN LUIS REY	0	1	0	2	0	4	7	4	2	6	3	15	18	2	26	33	8
SOUTH OCEANSIDE	0	0	0	0	1	2	3	5	3	8	3	8	11	2	21	24	2
TOWNSITE	1	1	1	3	1	9	15	10	2	12	15	31	46	9	67	82	16
TRI CITY	0	0	0	2	0	1	3	0	0	0	2	10	12	3	15	18	2
UNKNOWN	0	-1	1	0	0	0	-1	0	0	0	0	0	0	0	0	-1	0
SUB-TOTAL	3	4	1	10	6	37	60	33	23	56	74	155	229	41	326	386	108
GRAND TOTALS	3	4	1	10	6	37	60	33	23	56	74	155	229	41	326	386	108



UCR Crimes by GeoArea

Required Parameters
 Reporting Period: Jan 2017 to Jul 2017
 Agency: OCEANSIDE

Optional Parameters
 Geographical Area: All Beats
 Group by: Agency Select by: Neighborhood

Prior Report Number: S1STA120

Neighborhood	MURDER	RAPE (HISTORICAL)	RAPE (HISTORICAL)	ROBBERY--	ST/ ARM	ASAULT	CRIM TL	RESID	NRESID	TOTAL	\$400+	<\$400	TOTAL	THEFT	CRM TL	IDX TL	CRIME	CAR
				---	ARMED	AGGRVD	VIOLENT	---	BURGLARY----	LARCENY-THEFT--	M.VEH	PROPERTY	CRIME	CAR				
Agency = OCEANSIDE																		
AIRPORT	0	0	0	0	0	1	13	14	5	6	11	13	22	35	8	54	68	23
EASTSIDE/CAPISTRANO	0	1	0	0	3	26	34	5	6	11	24	44	68	12	91	125	34	
FIRE MOUNTAIN	0	2	1	4	2	14	22	5	15	20	77	158	235	15	270	292	87	
GUAJOME	0	4	4	2	2	4	12	5	2	7	32	69	101	8	116	128	44	
IVY RAN/RAN DEL ORO	1	8	3	4	3	31	47	18	34	52	68	143	211	39	302	349	139	
LAKE	0	0	0	2	2	-7	-3	12	8	20	12	62	74	12	106	103	15	
MIRA COSTA	0	1	1	6	3	11	21	27	32	59	52	85	137	22	218	239	109	
MISSN MESALOMA ALTA	0	7	6	7	6	16	36	11	14	25	56	116	172	22	219	255	101	
MORRO HILLS	0	0	0	1	0	7	8	1	1	2	5	9	14	1	17	25	9	
NORTH VALLEY	1	2	1	1	1	8	13	14	-1	13	17	35	52	15	80	93	30	
OCEAN HILLS	0	0	0	0	0	4	4	4	1	5	12	9	21	2	28	32	10	
OCEANA	0	0	0	0	1	1	2	2	1	3	9	18	27	2	32	34	17	
SAN LUIS REY	0	5	3	6	4	25	40	22	10	32	41	85	126	27	185	225	64	
SOUTH OCEANSIDE	1	1	1	4	3	10	19	17	15	32	37	59	96	6	134	153	42	
TOWNSITE	4	6	5	10	14	66	100	46	28	74	124	232	356	44	474	574	157	
TRI CITY	0	3	2	1	1	18	23	4	3	7	18	52	70	21	98	121	32	
UNKNOWN	0	0	0	0	0	2	2	0	0	0	1	1	2	0	2	4	1	
SUB-TOTAL	7	40	27	52	46	249	394	198	175	373	598	1,199	1,797	256	2,426	2,820	914	
GRAND TOTALS	7	40	27	52	46	249	394	198	175	373	598	1,199	1,797	256	2,426	2,820	914	