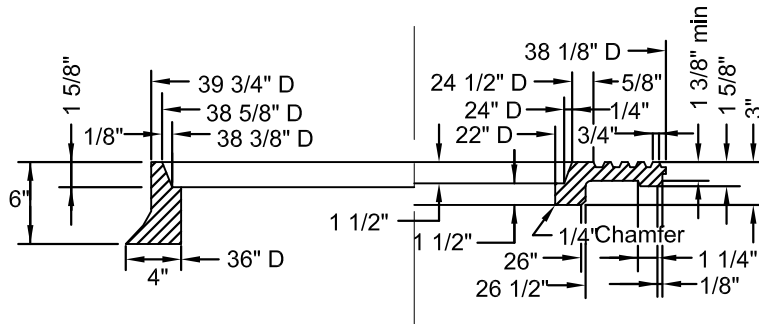


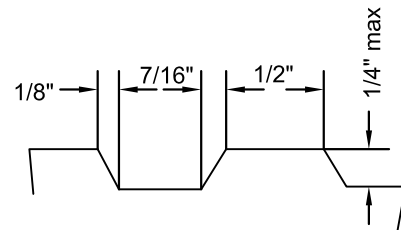
HALF PLAN FRAME & COVER



HALF SECTION FRAME & COVER

NOTES

1. Frame and cover shall be SBF 1325/1310 and cast iron.
Cast iron shall conform to ASTM 48, Class 35B
2. Weight: Frame 314 lbs-363 lbs.
Outer Cover 285 lbs-330 lbs.
Inner Cover 147 lbs-171 lbs.
3. Machine all matching surfaces and seats of frame and cover to prevent rocking.
4. Imported frames and covers shall have the country of origin marked in compliance with federal regulations.
5. Must have 3/4" pick hole.



DETAIL

Revision	By	Approved	Date	CITY OF OCEANSIDE	<i>Steven E. Strapan</i> 9/17/17 CITY ENGINEER Date
01/04/16	MU				
07/01/17	SM		08/01/17		