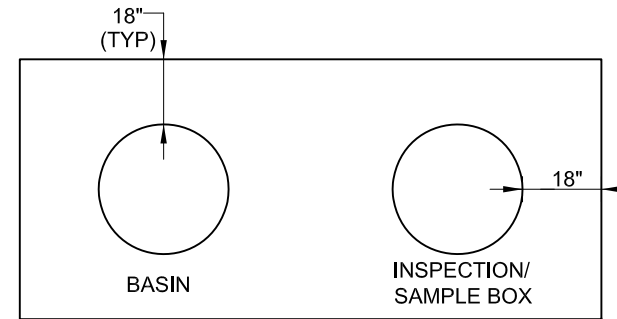
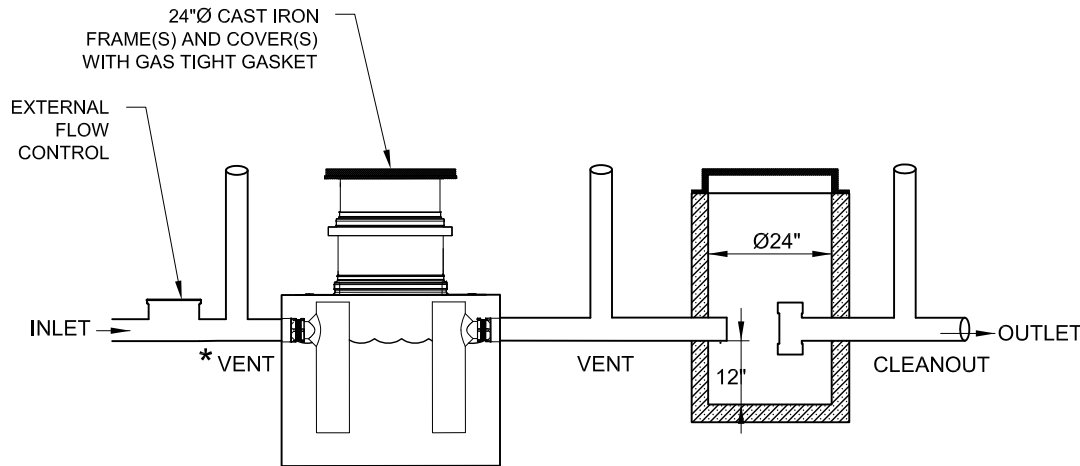


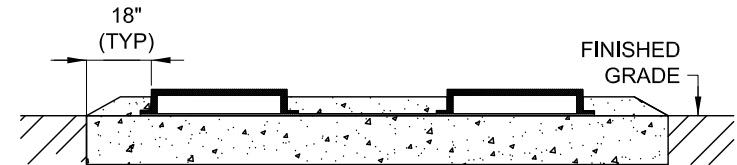
PLAN VIEW



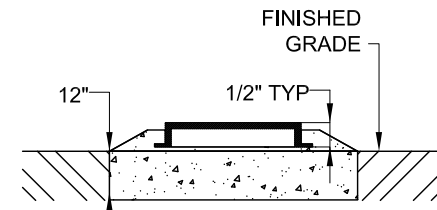
**CONCRETE COLLAR DETAIL
IN VEHICULAR TRAFFIC AREA
(PLAN VIEW)**



SIDE SECTION VIEW



(SIDE VIEW)



(END VIEW)

* VENT NOT REQUIRED ON INLET PIPE OF HYDROMECHANICAL GREASE INTERCEPTOR WITH INTERNAL FLOW CONTROL DEVICE.

NOTES:

1. GREASE INTERCEPTOR SHALL BE SIZED PER REQUIREMENTS OF THE LATEST ADOPTED CALIFORNIA PLUMBING CODE.
2. SIZE AND LOCATION OF THE INTERCEPTOR TO BE APPROVED PRIOR TO INSTALLATION.
3. INTERCEPTOR TO HAVE SAMPLE BOX WITH SANITARY TEE INSIDE SAMPLE BOX ON DISCHARGE SIDE, VENT, CLEANOUT PRIOR TO LATERAL CONNECTION, IN AREAS WHERE SPACE IS LIMITED, A 4" CLEANOUT MAY REPLACE SAMPLE BOX WITH WATER UTILITIES DEPARTMENT APPROVAL.
4. ALL MANHOLES AND SAMPLE BOXES TO BE INSTALLED WITH A CONCRETE COLLAR A MINIMUM OF 18" ALL AROUND MANHOLE LIDS AND 12" DEEP.
5. CONCRETE COLLAR, SAMPLE BOX FITTED AND ALL EXTERIOR PIPING SHALL BE SUPPLIED BY INSTALLER.
6. DESIGN LOAD: H-20 TRAFFIC WITH DRY SOIL CONDITIONS (WATER LEVEL BELOW TANK).
7. A SOIL INSPECTION REPORT IS REQUIRED BY A STATE LICENSED GEOTECHNICAL SOILS ENGINEER WITH A MINIMUM OF 95% COMPACTION WHEN INSTALLED IN TRAFFIC AREA.
8. SUITABLE SUB-BASE BEDDED WITH GRANULAR MATERIAL SHALL BE PREPARED TO HANDLE ANTICIPATED LOADS.
9. INSTALLATION SHALL BE IN ACCORDANCE WITH MANUFACTURER REQUIREMENTS.
10. ALL CONNECTIONS TO INTERCEPTOR TO BE INSPECTED BY CITY WATER UTILITIES INSPECTOR PRIOR TO BACKFILL. INTERCEPTOR TO BE FILLED WITH WATER PRIOR TO INSPECTION, PER MANUFACTURER'S INSTRUCTIONS OR REQUEST.
11. GREASE INTERCEPTORS IN INDOOR PARKING STRUCTURES OR PEDESTRIAN AREAS SHALL HAVE COVERS FLUSH WITH FINISHED SURFACE OR GRADE (SIDEWALK OR INDOOR PARKING).

Revision	By	Approved	Date
07/01/17	SM		08/01/17
10/26/17	MU		10/26/17

CITY OF OCEANSIDE

**HYDROMECHANICAL GREASE INTERCEPTOR
WITH SAMPLE BOX**

Steve E. Strapp 10/26/17
CITY ENGINEER Date

STANDARD
DRAWING NO. **S-11c**