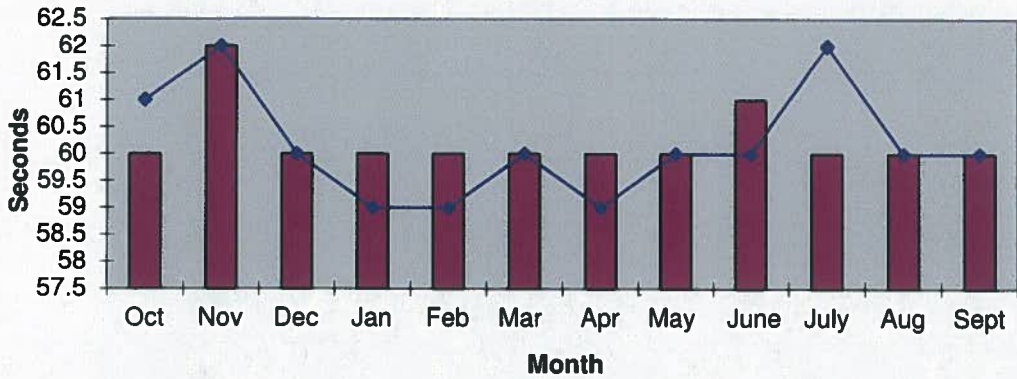
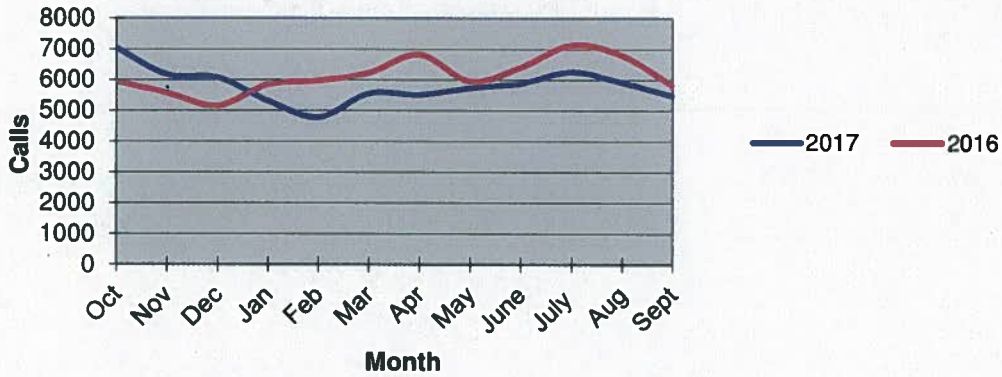


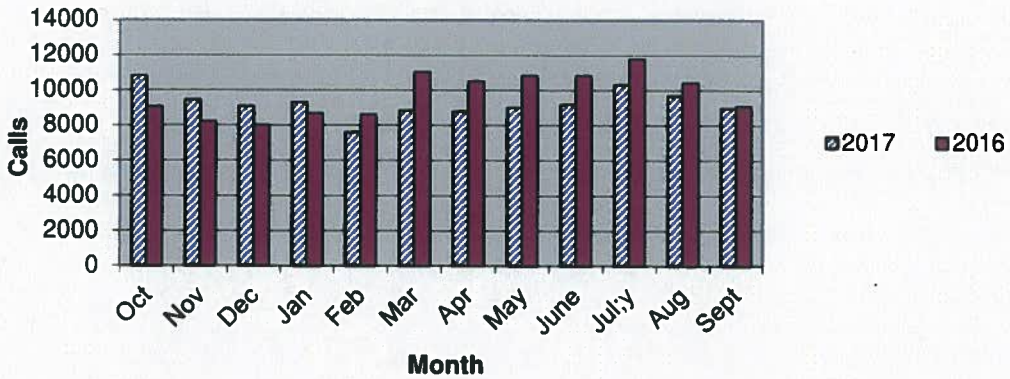
Priority 1 Dispatch Times- Police



911 Calls



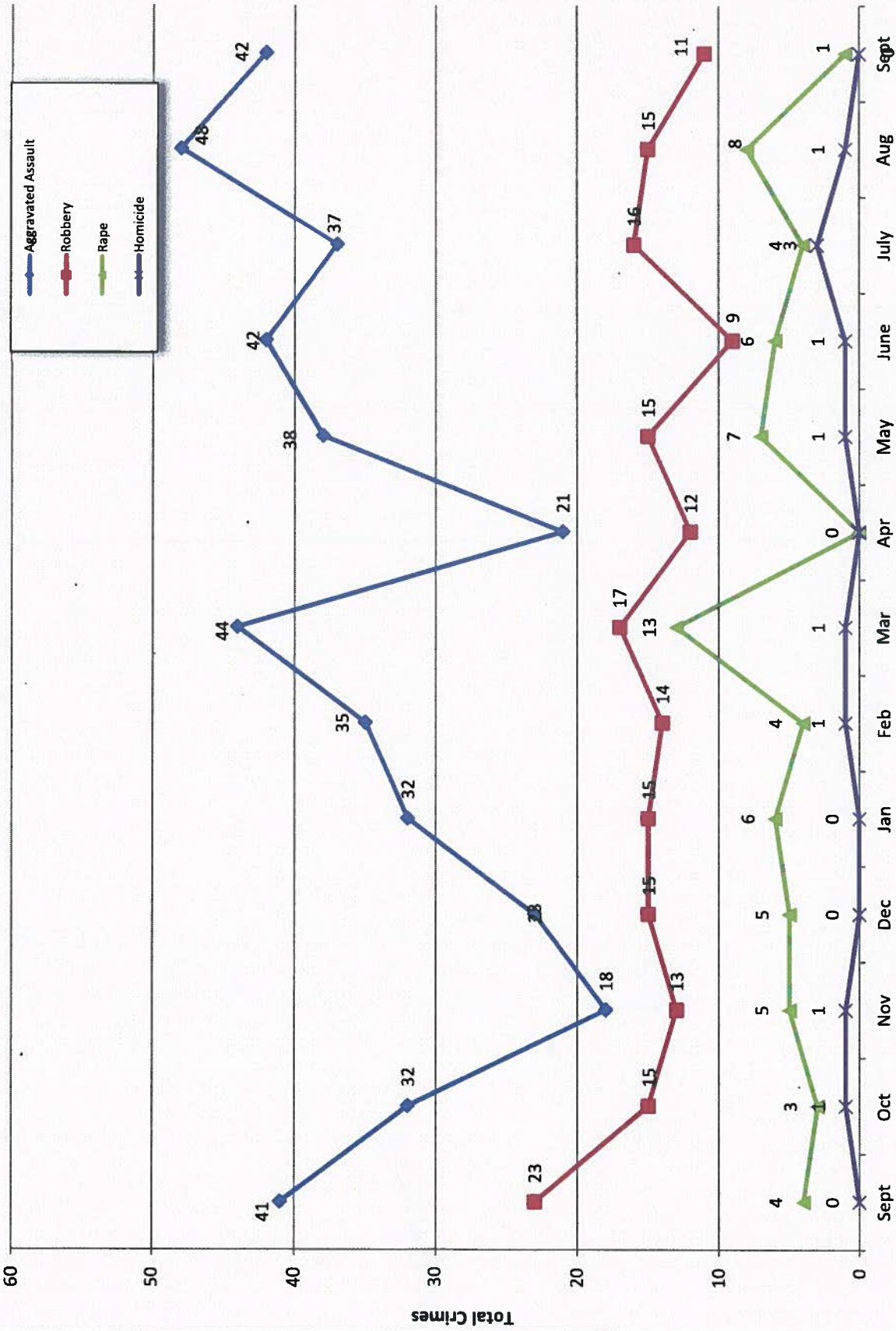
Calls for Service



**OCEANSIDE POLICE DEPARTMENT
FBI INDEX CRIMES**

	MONTHLY CASE ACTIVITY 2017												YEAR TO DATE COMPARISON		% CHANGE	
	JAN	FEB	MAR	APR	MAY	JUN	JUL	AUG	SEP	OCT	NOV	DEC	2016	2017		
													CHANGE	CHANGE		
1. HOMICIDE	0	1	1	0	1	1	3	1	0				5	8	3	60.0%
	0	0	2	0	0	1	1	1	0				2	5	3	150.0%
2. RAPE	6	4	13	0	7	6	4	8	1				40	49	9	22.5%
	2	3	6	1	1	0	1	1	2				7	17	10	142.9%
3. ROBBERY	15	14	17	12	15	9	16	15	11				126	124	-2	-1.6%
	8	6	6	1	5	3	6	5	4				36	44	8	22.2%
4. AGGR. ASSAULT	32	35	44	21	38	42	37	48	42				328	339	11	3.4%
	14	13	17	0	17	18	16	19	17				142	131	-11	-7.7%
5. BURGLARY	60	64	74	43	45	31	56	54	61				437	488	51	11.7%
	2	6	4	7	8	3	4	4	6				35	44	9	25.7%
6. LARCENY THEFT	287	263	254	257	258	249	229	324	243				2542	2364	-178	-7.0%
	10	16	20	18	19	28	25	28	16				269	180	-89	-33.1%
7. AUTO THEFT	38	24	47	33	37	36	41	44	50				365	350	-15	-4.1%
	2	3	3	5	0	1	4	4	0				22	22	0	0.0%
TOTAL INDEX CRIMES	438	405	450	366	401	374	386	494	408				3843	3722	-121	-3.1%
	38	47	58	32	50	54	57	62	45				513	443	-70	-13.6%
TOTAL PERSON CRIMES	53	54	75	33	61	58	60	72	54				499	520	21	4.2%
	24	22	31	2	23	22	24	26	23				187	197	10	5.3%
TOTAL PROPERTY CRIMES	385	351	375	333	340	316	326	422	354				3344	3202	-142	-4.2%
	14	25	27	30	27	32	33	36	22				326	246	-80	-24.5%
ARSON	4	2	0	2	6	2	1	4	0				9	21	12	133.3%
Y-T-D Loss \$121,879.00	0	0	0	0	0	0	2	0	0				3	2	-1	-33.3%

Part 1 Crimes by Month (Violent Crimes) September 2017

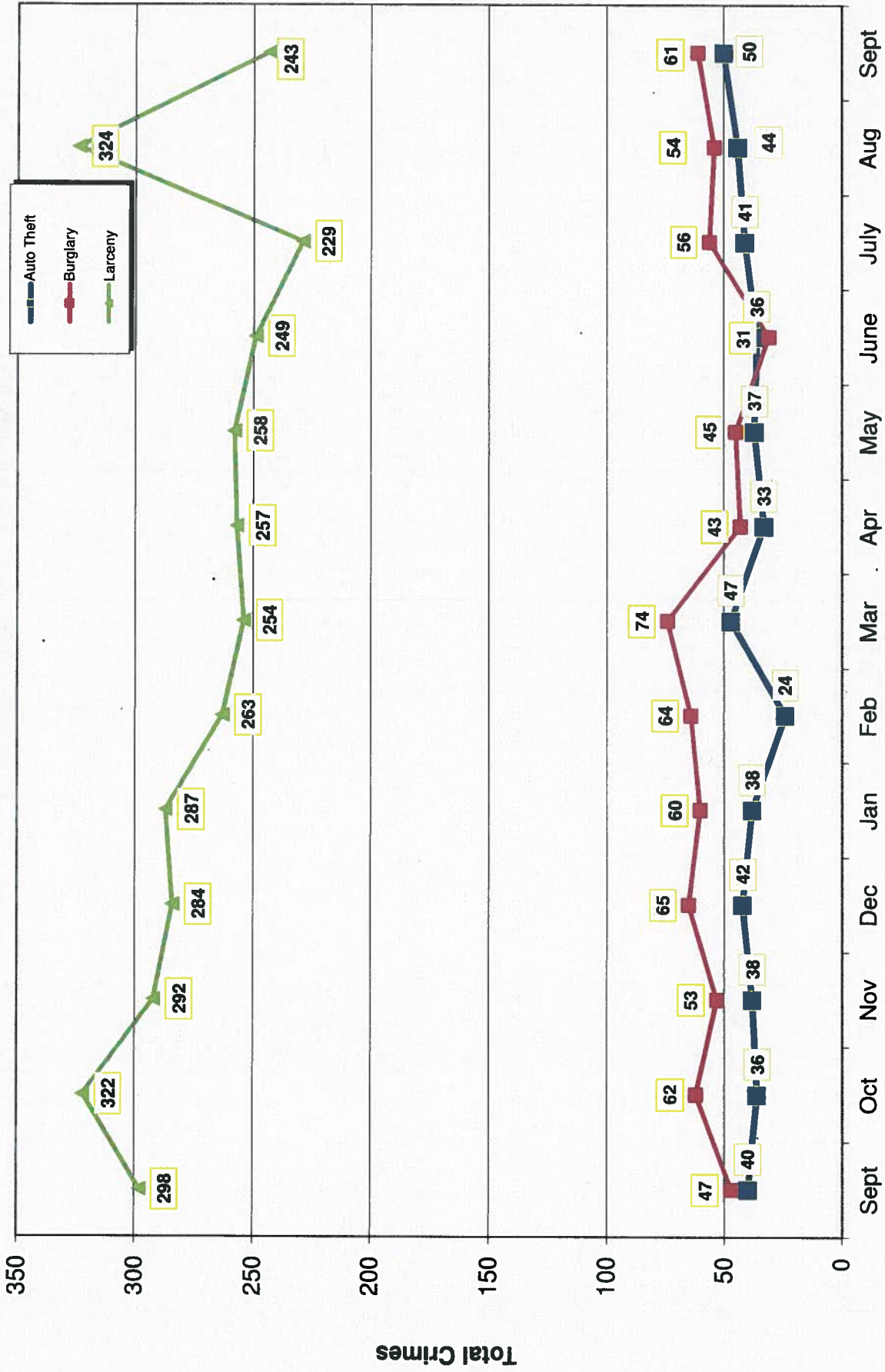


- 2017 -

Month

- 2016 -

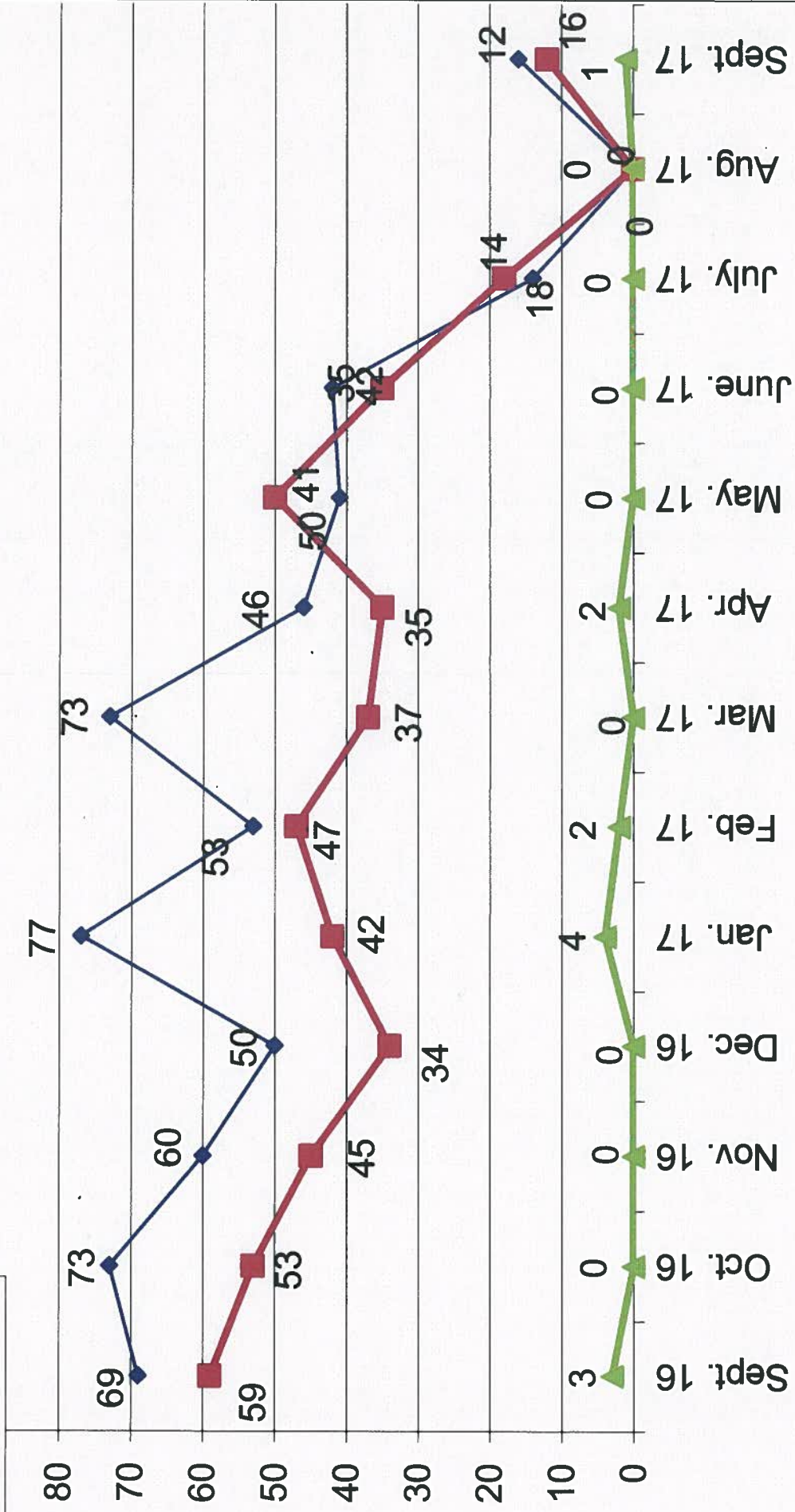
Part 1 Crimes by Month (Property Crimes) September 2017



- 2017 -

- 2016 -

Traffic Collisions September 2016 - September 2017





UCR Crimes by GeoArea

Required Parameters
 Reporting Period: Sep 2017
 Agency: OCEANSIDE

Optional Parameters
 Geographical Area: All Beats
 Group by: Agency Select by: Neighborhood

Prior Report Number: S1STA120

Neighborhood	MURDER	RAPE	RAPE (HISTORICAL)	ROBBERY--	ARMED	ST/ ARM	ASAULT	VIOLENT	AGGRVD	BURGLARY	TOTAL	NRESID	TOTAL	\$400+	<\$400	TOTAL	THEFT	PROPERTY	CRIME	CAR	PROWL	
Agency = OCEANSIDE																						
AIRPORT	0	0	0	0	0	0	1	2	3	0	6	0	6	2	3	5	1	12	15	1	1	
EASTSIDE/CAPISTRANO	0	0	0	0	0	0	0	0	0	0	1	0	1	7	10	17	2	20	20	8	8	
FIRE MOUNTAIN	0	0	0	0	0	0	0	1	1	3	4	3	4	10	17	27	0	31	32	9	9	
GUAJOME	0	0	0	0	1	0	2	3	1	1	2	1	2	7	5	12	4	18	21	2	2	
IVY RAN/RAN DEL ORO	0	0	0	0	1	0	7	8	5	18	23	5	23	12	18	30	7	60	68	18	18	
LAKE	0	0	0	0	0	0	1	1	0	0	0	0	0	3	9	12	2	14	15	2	2	
MIRA COSTA	0	0	0	0	0	0	3	3	1	4	5	4	5	4	9	13	5	23	26	9	9	
MISSN MESA/LOMA ALTA	0	-1	0	1	1	1	6	7	1	3	4	4	4	4	12	16	5	25	32	6	6	
MORRO HILLS	0	0	0	0	0	0	2	2	0	0	0	0	0	2	3	5	1	6	8	2	2	
NORTH VALLEY	0	0	0	0	0	0	9	9	1	0	1	0	1	4	6	10	3	14	23	6	6	
OCEAN HILLS	0	0	0	0	0	0	0	0	0	0	0	0	0	1	0	1	0	1	1	1	1	
OCEANA	0	0	0	0	0	1	0	1	0	0	0	0	0	0	4	4	1	5	6	1	1	
SAN LUIS REY	0	1	1	3	0	0	5	9	2	1	3	10	12	22	22	22	6	31	40	13	13	
SOUTH OCEANSIDE	0	0	0	0	0	0	1	1	1	2	3	4	6	4	6	10	2	15	16	2	2	
TOWNSITE	0	1	1	0	2	2	2	5	9	0	9	0	9	19	34	53	6	68	73	15	15	
TRI CITY	0	0	0	0	0	0	1	1	0	0	0	0	0	1	5	6	5	11	12	5	5	
UNKNOWN	0	0	0	0	0	0	0	0	0	0	0	0	0	0	0	0	0	0	0	0	0	
SUB-TOTAL	0	1	2	6	5	5	42	54	24	37	61	24	61	90	153	243	50	354	408	100	100	
GRAND TOTALS	0	1	2	6	5	5	42	54	24	37	61	24	61	90	153	243	50	354	408	100	100	



UCR Crimes by GeoArea

Required Parameters
Reporting Period: Jan 2017 to Sep 2017
Agency: OCEANSIDE

Optional Parameters
Geographical Area: All Beats
Group by: Agency Select by: Neighborhood

Prior Report Number: S1STA120

Neighborhood	MURDER	RAPE (HISTORICAL)	RAPE	ARMED	ST/ ARM	ASAULT	CRMTL	RESID	NRESID	TOTAL	\$400+	---BURGLARY---	--LARCENY-THEFT--	M.VEH	PROPERTY	CRIME	CAR	
Agency = OCEANSIDE																		
AIRPORT	0	0	0	1	3	16	20	5	14	19	24	32	56	9	84	104	38	
EASTSIDE/CAPISTRANO	0	2	0	4	4	28	38	5	7	12	34	63	97	14	123	161	47	
FIRE MOUNTAIN	0	2	1	4	2	16	24	8	21	29	95	202	297	17	343	367	108	
GUAJOME	0	4	4	3	2	10	19	6	5	11	48	87	135	15	161	180	57	
IVY RAN/RAN DEL ORO	1	10	5	6	3	48	68	27	57	84	103	184	287	53	424	492	185	
LAKE	0	0	0	2	2	-5	-1	13	9	22	19	81	100	15	137	136	20	
MIRA COSTA	0	2	2	7	3	16	28	30	39	69	61	95	156	29	254	282	120	
MISSN MESALOMA ALTA	0	6	6	8	7	25	46	17	17	34	68	146	214	31	279	325	118	
MORRO HILLS	1	0	0	1	0	10	12	4	1	5	8	14	22	2	29	41	14	
NORTH VALLEY	1	2	1	1	1	20	25	17	-1	16	24	49	73	22	111	136	42	
OCEAN HILLS	0	0	0	0	0	4	4	4	1	5	16	12	28	2	35	39	15	
OCEANA	0	0	0	0	2	3	5	2	1	3	11	23	34	3	40	45	19	
SAN LUIS REY	0	6	4	10	6	33	55	25	13	38	58	103	161	41	240	295	82	
SOUTH OCEANSIDE	1	1	1	4	2	14	22	22	19	41	52	76	128	12	181	203	50	
TOWNSITE	4	11	9	10	24	79	128	60	32	92	178	304	482	55	629	757	195	
TRI CITY	0	3	2	1	1	20	25	5	3	8	23	68	91	30	129	154	44	
UNKNOWN	0	0	0	0	0	2	2	0	0	0	2	1	3	0	3	5	2	
SUB-TOTAL	8	49	35	62	62	339	520	250	238	488	824	1,540	2,364	350	3,202	3,722	1,156	
GRAND TOTALS	8	49	35	62	62	339	520	250	238	488	824	1,540	2,364	350	3,202	3,722	1,156	