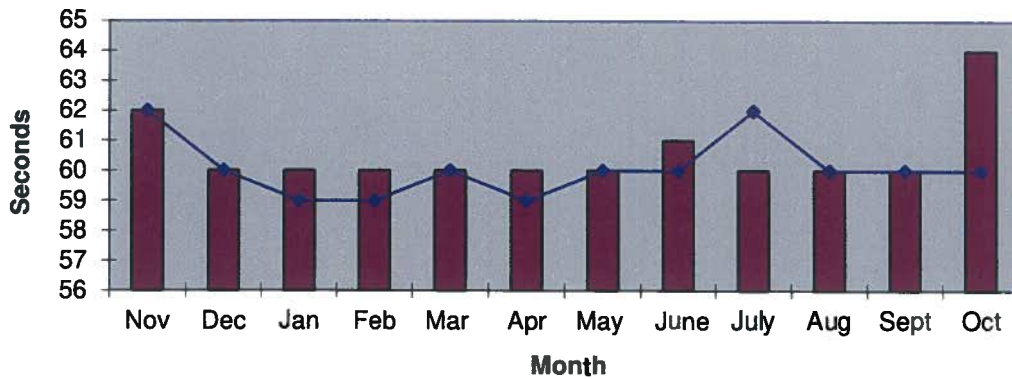
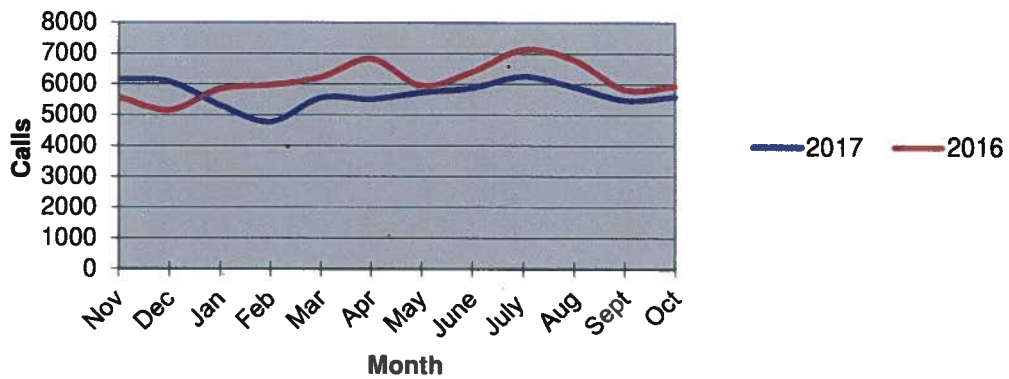


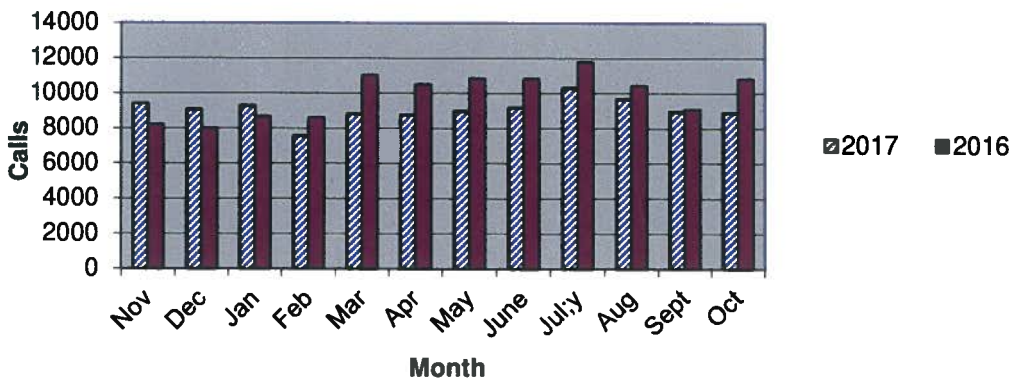
Priority 1 Dispatch Times- Police



911 Calls



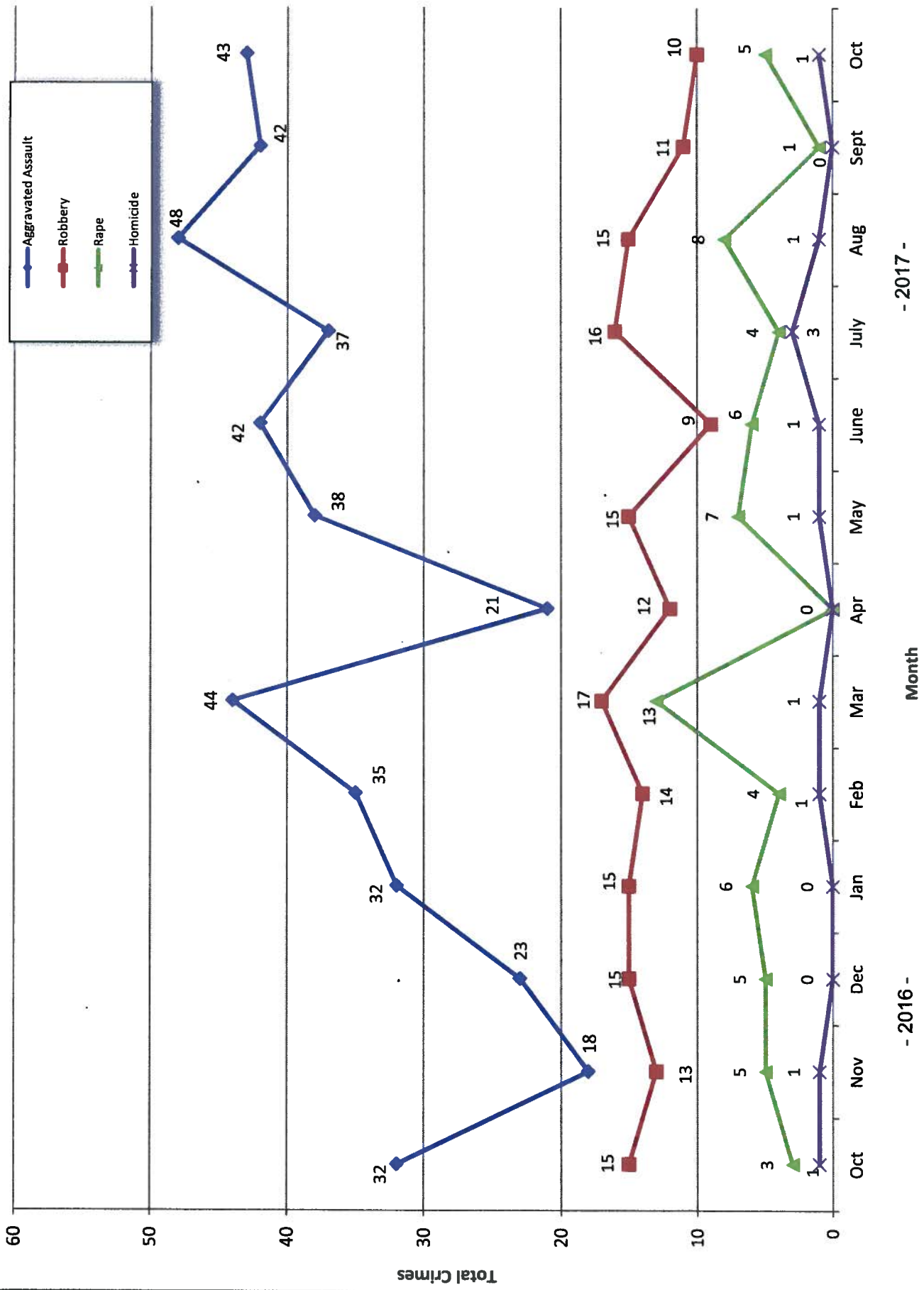
Calls for Service



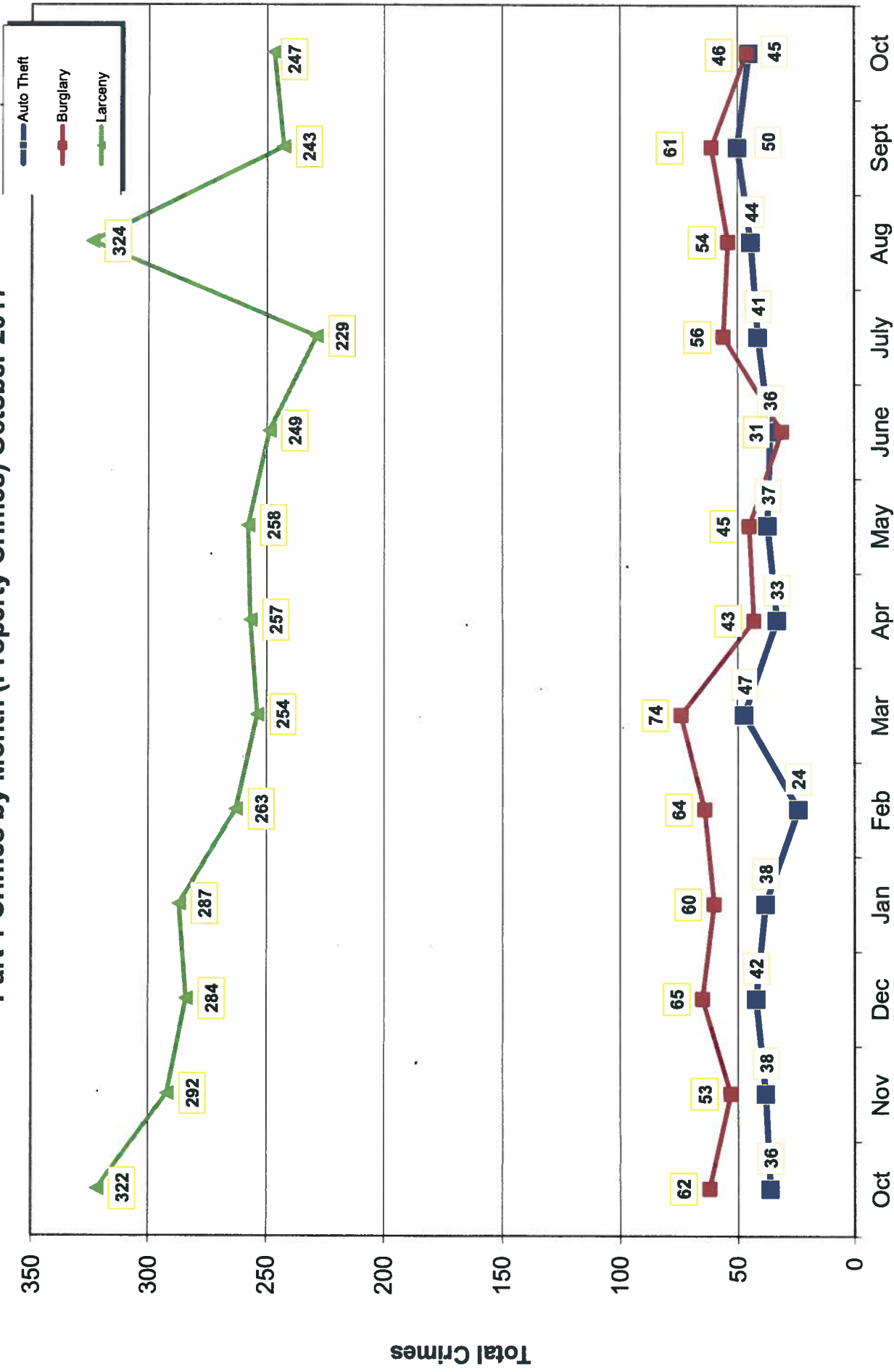
**OCEANSIDE POLICE DEPARTMENT
FBI INDEX CRIMES**

	MONTHLY CASE ACTIVITY 2017												YEAR TO DATE COMPARISON		% CHANGE	
	JAN	FEB	MAR	APR	MAY	JUN	JUL	AUG	SEP	OCT	NOV	DEC	2016	2017		
	CHANGE	CHANGE	CHANGE	CHANGE	CHANGE	CHANGE	CHANGE	CHANGE	CHANGE	CHANGE	CHANGE	CHANGE	CHANGE	CHANGE		
1. HOMICIDE	0	1	1	0	1	1	3	1	0	1	0	1	6	9	3	50.0%
	0	0	2	0	0	1	1	1	0	1	0	1	2	6	4	200.0%
2. RAPE	6	4	13	0	7	6	4	8	1	5	1	5	49	54	5	10.2%
	2	3	6	1	1	0	1	1	2	0	0	0	8	17	9	112.5%
3. ROBBERY	15	14	17	12	15	9	16	15	11	10	11	10	146	134	-12	-8.2%
	8	6	6	1	5	3	6	5	4	2	4	2	43	46	3	7.0%
4. AGGR. ASSAULT	32	35	44	21	38	42	37	48	42	43	42	43	340	382	42	12.4%
	14	13	17	0	17	18	16	19	17	15	17	15	147	146	-1	-0.7%
5. BURGLARY	60	64	74	43	45	31	56	54	61	46	61	46	510	534	24	4.7%
	2	6	4	7	8	3	4	4	6	5	6	5	39	49	10	25.6%
6. LARCENY THEFT	287	263	254	257	258	249	229	324	243	247	243	247	2797	2611	-186	-6.6%
	10	16	20	18	19	28	25	28	16	17	16	17	285	197	-88	-30.9%
7. AUTO THEFT	38	24	47	33	37	36	41	44	50	45	50	45	405	395	-10	-2.5%
	2	3	3	5	0	1	4	4	0	3	0	3	24	25	1	4.2%
TOTAL INDEX CRIMES	438	405	450	366	401	374	386	494	408	397	408	397	4254	4119	-135	-3.2%
	38	47	58	32	50	54	57	62	45	43	62	43	548	486	-62	-11.3%
TOTAL PERSON CRIMES	53	54	75	33	61	58	60	72	54	59	72	54	541	579	38	7.0%
	24	22	31	2	23	22	24	26	23	18	26	23	200	215	15	7.5%
TOTAL PROPERTY CRIMES	385	351	375	333	340	316	326	422	354	338	422	354	3713	3540	-173	-4.7%
	14	25	27	30	27	32	33	36	22	25	36	22	348	271	-77	-22.1%
ARSON	4	2	0	2	6	2	1	4	0	0	4	0	10	21	11	110.0%
Y-T-D Loss \$121,879.00	0	0	0	0	0	0	2	0	0	0	0	0	3	2	-1	-33.3%

Part 1 Crimes by Month (Violent Crimes) October 2017



Part 1 Crimes by Month (Property Crimes) October 2017

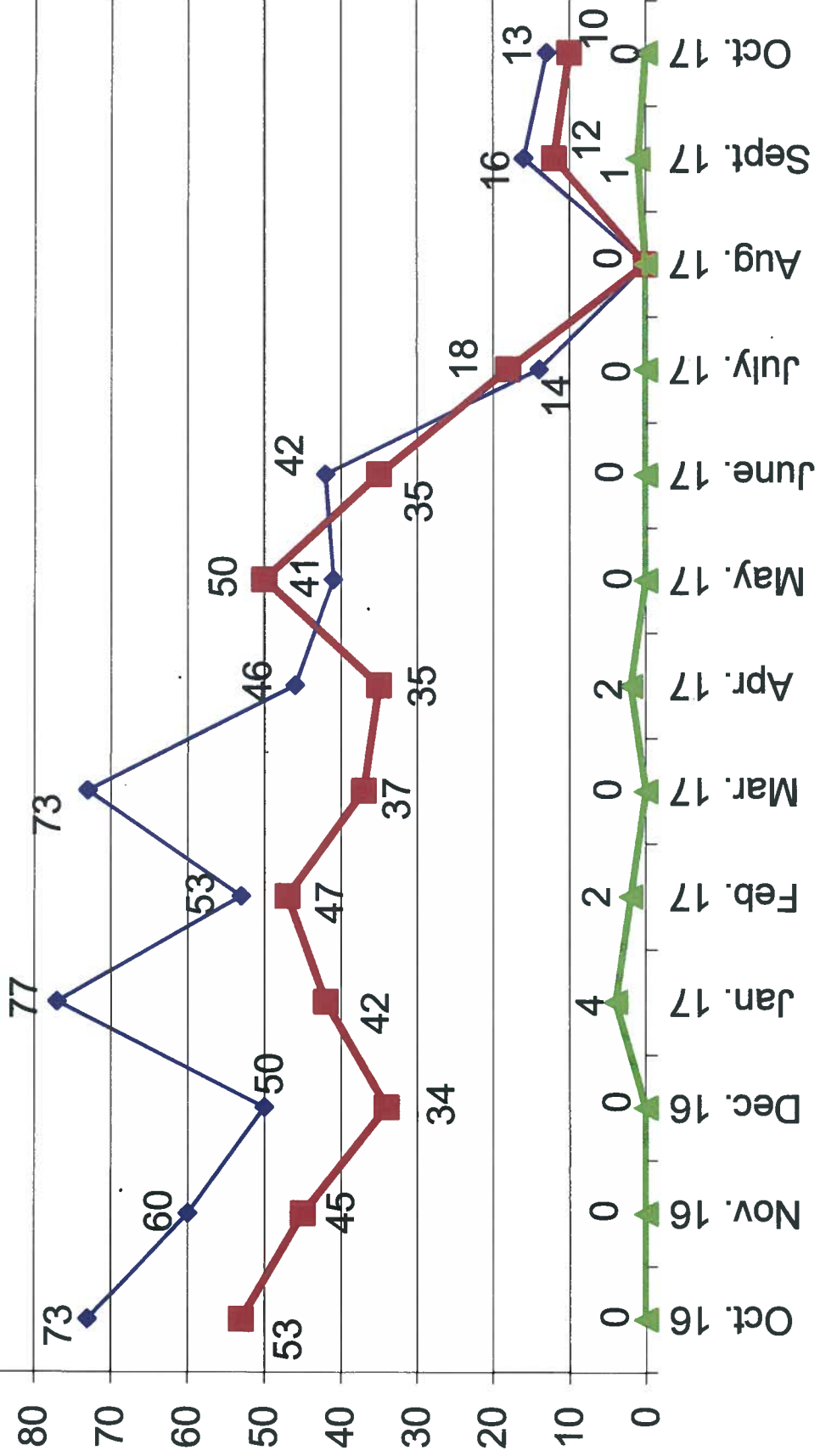
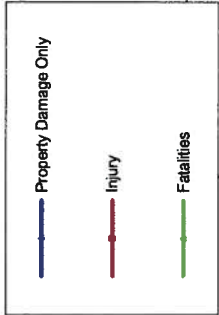


Month

- 2016 -

- 2017 -

Traffic Collisions October 2016 - October 2017





UCR Crimes by GeoArea

Required Parameters
 Reporting Period: Oct 2017
 Agency: OCEANSIDE

Optional Parameters
 Geographical Area: All Beats
 Group by: Agency Select by: Neighborhood

Prior Report Number: S1STA120

Neighborhood	MURDER	RAPE (HISTORICAL)	ROBBERY--	AGGRVD	VIOLENT	---BURGLARY----	--LARCENY-THEFT---	M.VEH	PROPERTY	CRIME	CAR					
			ARMED	ST/ARM	ASAULT	CRM TL	RESID	NRESID	TOTAL	\$400+	<\$400	TOTAL	THEFT	CRM TL	IDX TL	PROWL

Agency = OCEANSIDE	*****															
AIRPORT	0	0	0	0	0	0	0	0	0	5	4	9	0	9	9	6
EASTSIDE/CAPISTRANO	1	0	0	0	1	2	0	0	0	5	6	11	3	14	16	4
FIRE MOUNTAIN	0	0	0	0	2	2	0	3	3	6	20	26	4	33	35	12
GUAJOME	0	0	0	0	2	3	2	0	2	5	9	14	2	18	21	8
IVY RANRAN DEL ORO	0	2	2	0	4	6	4	4	8	15	23	38	9	55	61	28
LAKE	0	0	0	0	4	4	2	1	3	4	8	12	0	15	19	2
MIRA COSTA	0	0	0	0	1	2	5	0	5	7	8	15	2	22	24	12
MISSN MESALOMA ALTA	0	0	1	0	2	2	0	1	1	6	10	16	5	22	24	10
MORRO HILLS	0	0	0	0	3	3	1	0	1	2	3	5	2	8	11	4
NORTH VALLEY	0	0	0	1	2	3	6	2	3	1	4	5	5	13	19	3
OCEAN HILLS	0	0	0	0	1	1	2	0	2	0	2	2	0	4	5	2
OCEANA	0	0	0	0	2	2	0	1	1	2	6	8	0	9	11	3
SAN LUIS REY	0	1	0	0	4	5	1	2	3	4	12	16	1	20	25	7
SOUTH OCEANSIDE	0	0	0	0	1	2	2	0	2	8	6	14	2	18	20	7
TOWNSITE	0	1	2	4	0	13	18	7	3	10	34	49	7	66	84	14
TRI CITY	0	1	1	0	0	1	2	0	2	2	5	7	1	10	11	3
UNKNOWN	0	0	0	0	0	0	0	0	0	0	0	0	2	2	2	0
SUB-TOTAL	1	5	4	6	4	43	59	30	46	87	160	247	45	338	397	125
GRAND TOTALS	1	5	4	6	4	43	59	30	46	87	160	247	45	338	397	125



UCR Crimes by GeoArea

Required Parameters
Reporting Period: Jan 2017 to Oct 2017
Agency: OCEANSIDE

Optional Parameters
Geographical Area: All Beats
Group by: Agency Select by: Neighborhood

Prior Report Number: S1STA120

Neighborhood	MURDER	RAPE (HISTORICAL)	RAPE (HISTORICAL)	ROBBERY--	AGGRVD	VIOLENT	---BURGLARY-----	---LARCENY-THEFT---	M.VEH	PROPERTY	CRIME	CAR				
			ARMED	ST/	ASAULT	CRM TL	RESID	NRESID	TOTAL	\$400+	<\$400	TOTAL	THEFT	CRM TL	IDX TL	PROWL
			ARM	ARM												

Agency = OCEANSIDE																
AIRPORT	0	0	0	1	3	16	20	5	14	19	29	36	65	93	113	44
EASTSIDE/CAPISTRANO	1	2	0	4	4	29	40	5	7	12	39	69	108	137	177	51
FIRE MOUNTAIN	0	2	1	4	2	18	26	8	24	32	101	222	323	376	402	120
GUAJOME	0	4	4	4	2	12	22	8	5	13	53	96	149	179	201	65
IVY RAN/RAN DEL ORO	1	12	7	6	3	52	74	31	61	92	118	207	325	479	553	213
LAKE	0	0	0	2	2	-1	3	15	10	25	23	89	112	152	155	22
MIRA COSTA	0	2	2	7	4	17	30	35	39	74	68	103	171	276	306	132
MISSN MESALOMA ALTA	0	6	5	8	7	27	48	17	18	35	74	156	230	301	349	128
MORRO HILLS	1	0	0	1	0	13	15	5	1	6	10	17	27	37	52	18
NORTH VALLEY	1	2	1	2	3	23	31	19	0	19	25	53	78	124	155	45
OCEAN HILLS	0	0	0	0	0	5	5	6	1	7	16	14	30	39	44	17
OCEANA	0	0	0	0	2	5	7	2	2	4	13	29	42	49	56	22
SAN LUIS REY	0	7	4	10	6	37	60	26	15	41	62	115	177	260	320	89
SOUTH OCEANSIDE	1	1	1	4	3	15	24	24	19	43	60	82	142	199	223	57
TOWNSITE	4	12	11	14	24	92	146	67	35	102	193	338	531	695	841	209
TRI CITY	0	4	3	1	1	20	26	7	3	10	25	73	98	139	165	47
UNKNOWN	0	0	0	0	0	2	2	0	0	0	2	1	3	5	7	2
SUB-TOTAL	9	54	39	68	66	382	579	280	254	534	911	1,700	2,611	3,540	4,119	1,281
GRAND TOTALS	9	54	39	68	66	382	579	280	254	534	911	1,700	2,611	3,540	4,119	1,281