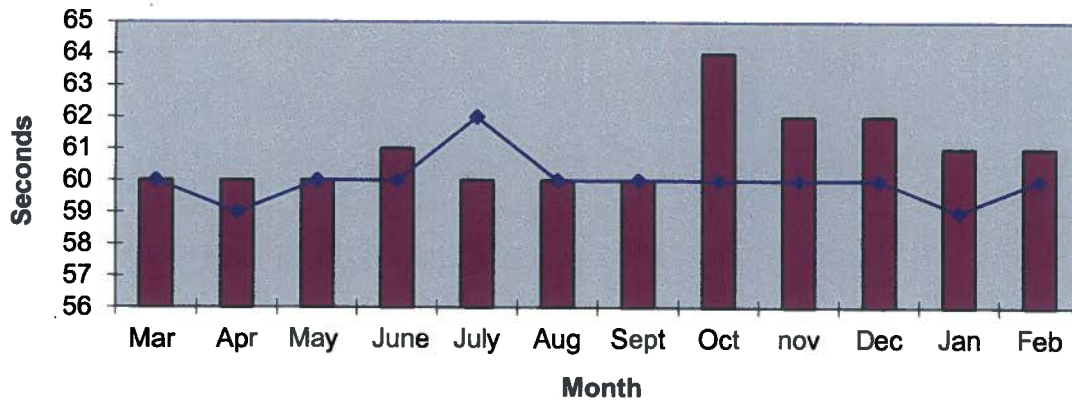
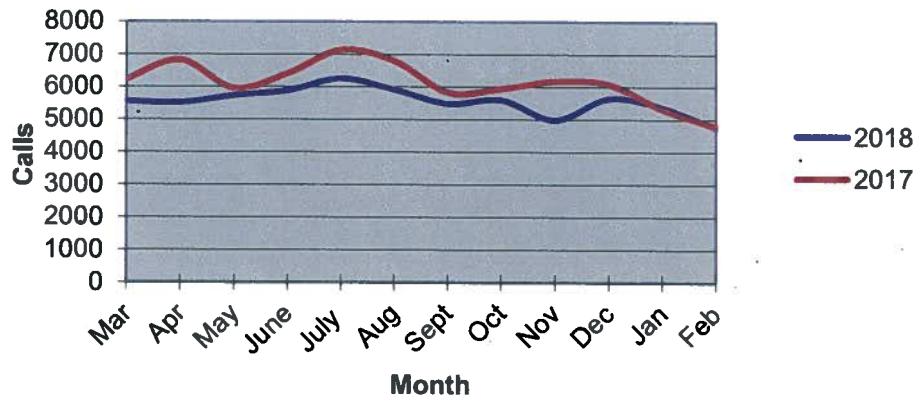


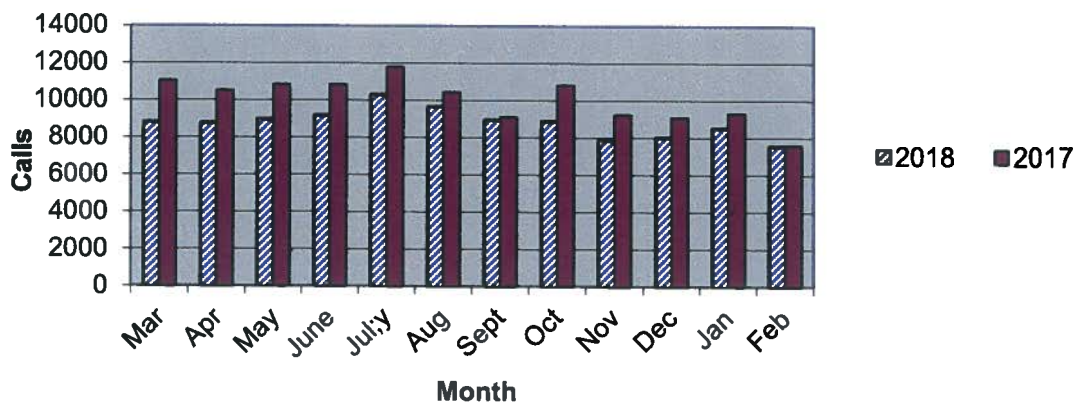
Priority 1 Dispatch Times- Police



911 Calls



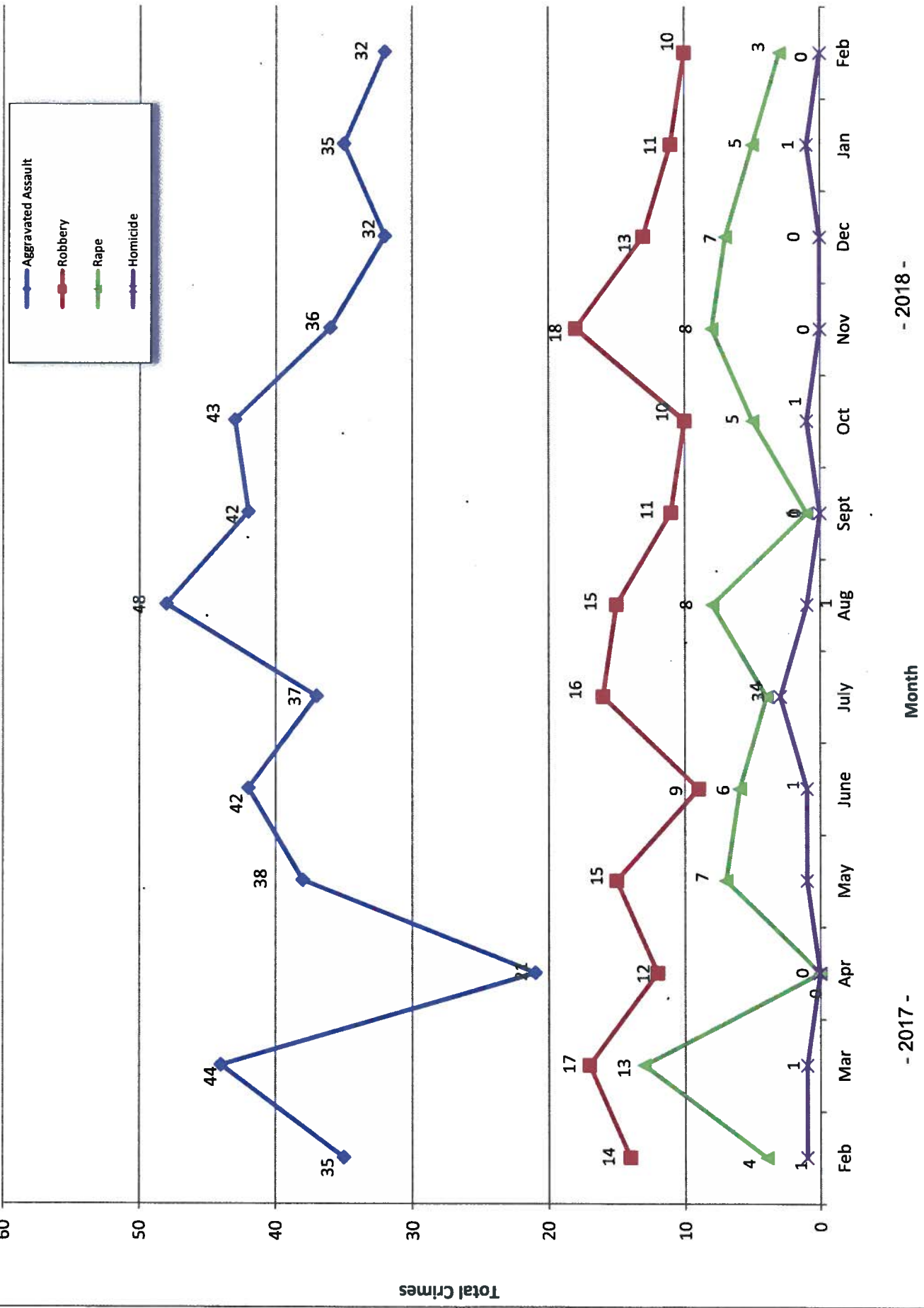
Calls for Service



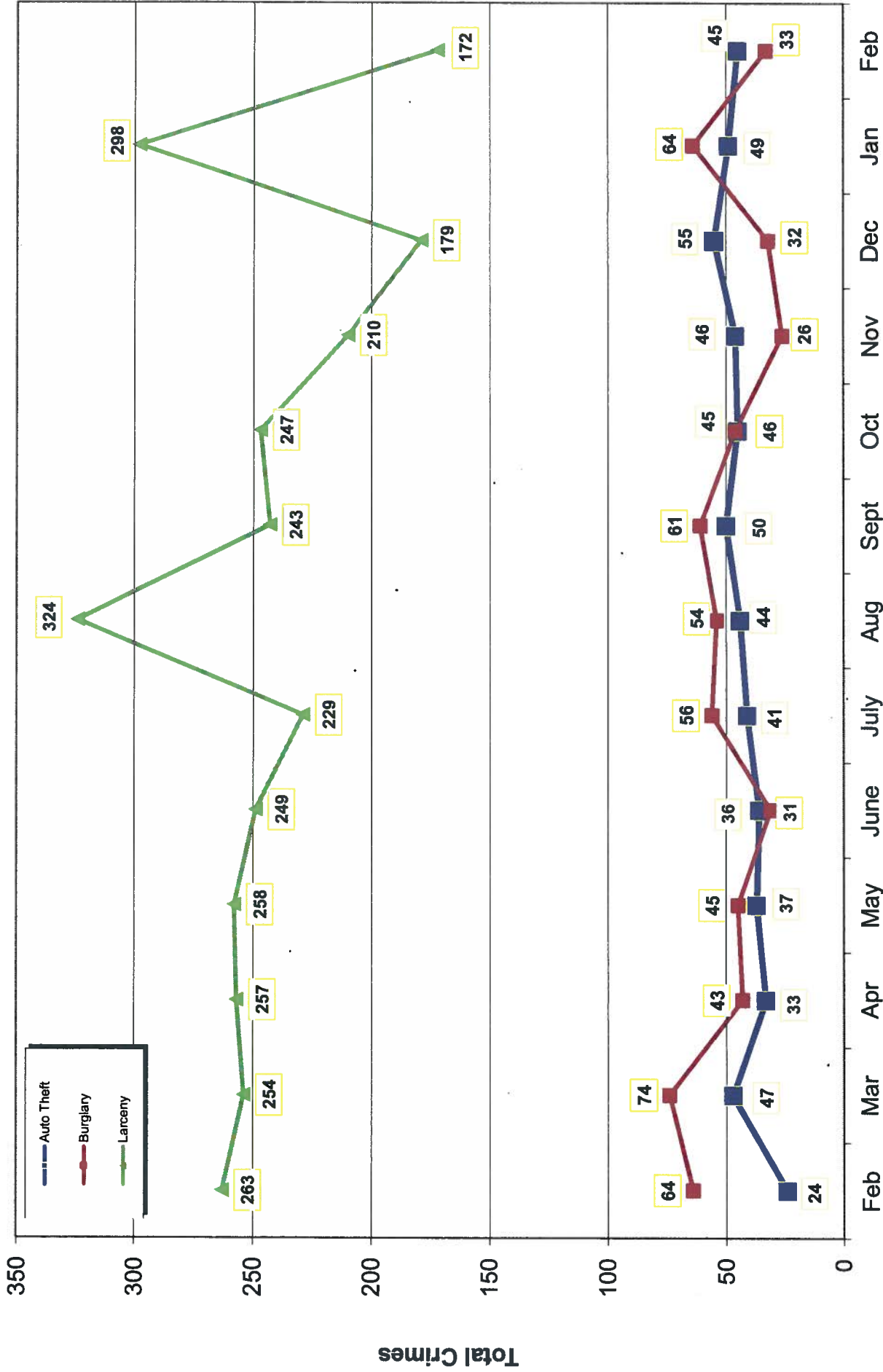
**OCEANSIDE POLICE DEPARTMENT
FBI INDEX CRIMES**

		MONTHLY CASE ACTIVITY 2018												YEAR TO DATE COMPARISON		% CHANGE	
		JAN	FEB	MAR	APR	MAY	JUN	JUL	AUG	SEP	OCT	NOV	DEC	2017	2018		CHANGE
1. HOMICIDE	Actual Cleared	1 1	0 0											1 0	1 1	0 1	0.0% 0.0%
2. RAPE	Actual Cleared	5 3	3 1											10 5	8 4	-2 -1	-20.0% -20.0%
3. ROBBERY	Actual Cleared	11 3	10 1											29 14	21 4	-8 -10	-27.6% -71.4%
4. AGGR. ASSAULT	Actual Cleared	35 16	32 9											67 27	67 25	0 -2	0.0% -7.4%
5. BURGLARY	Actual Cleared	64 5	33 4											124 8	97 9	-27 1	-21.8% 12.5%
6. LARGENY THEFT	Actual Cleared	298 27	172 16											550 26	470 43	-80 17	-14.5% 65.4%
7. AUTO THEFT	Actual Cleared	49 2	45 2											62 5	94 4	32 -1	51.6% -20.0%
TOTAL INDEX CRIMES	Actual Cleared	463 57	295 33											843 85	758 90	-85 5	-10.1% 5.9%
TOTAL PERSON CRIMES	Actual Cleared	52 23	45 11											107 46	97 34	-10 -12	-9.3% -26.1%
TOTAL PROPERTY CRIMES	Actual Cleared	411 34	250 22											736 39	661 56	-75 17	-10.2% 43.6%
ARSON	Actual	3	1											6	4	-2	-33.3%
Y-T-D Loss \$22,010	Cleared	1	0											0	1	1	0.0%

Part 1 Crimes by Month (Violent Crimes) 2018



Part 1 Crimes by Month (Property Crimes) 2018

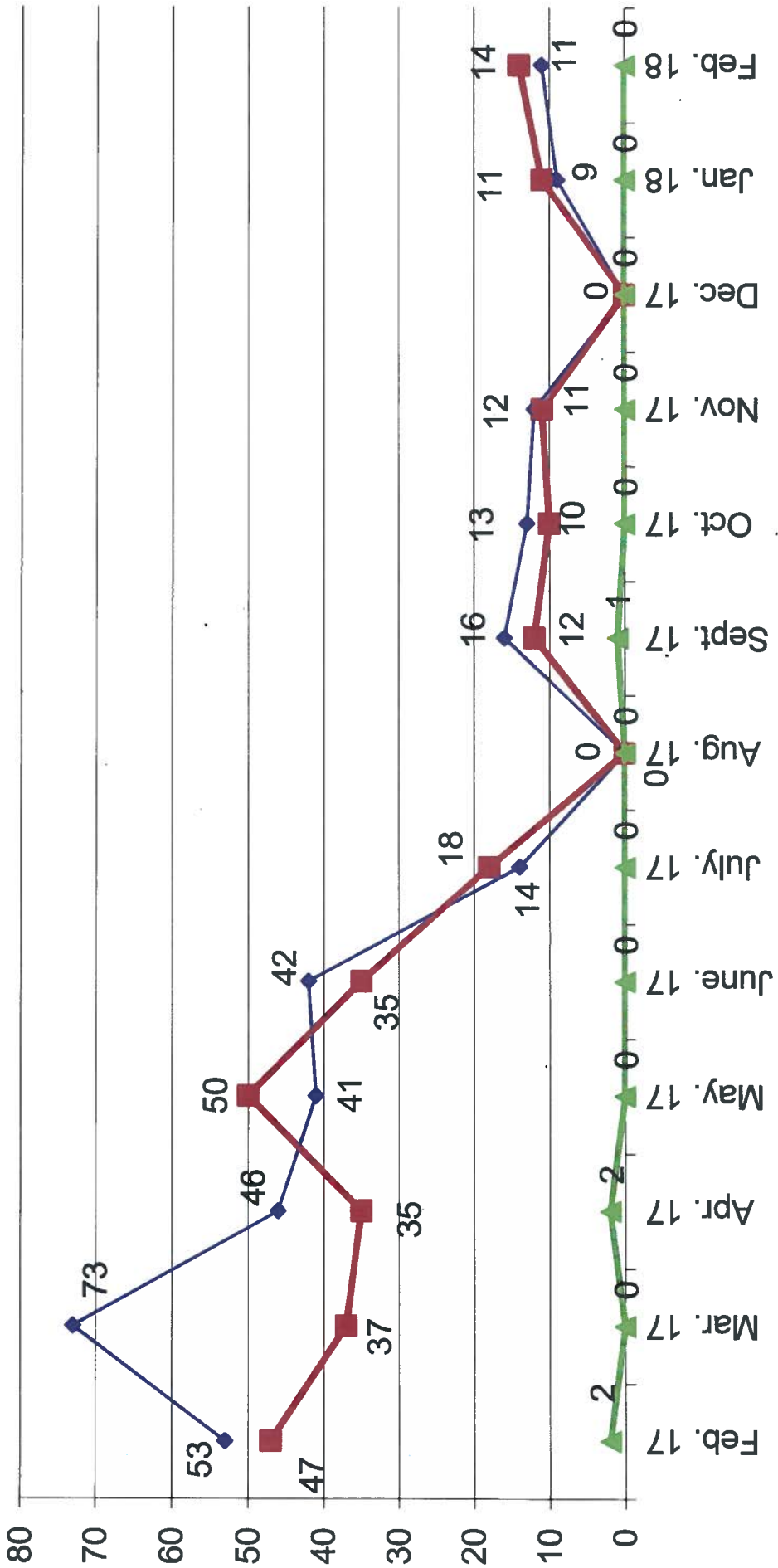
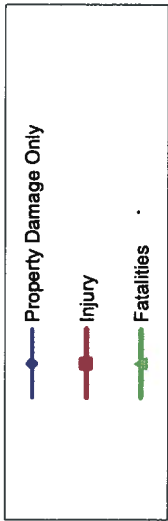


- 2018 -

Month

- 2017 -

Traffic Collisions February 2017 - February 2018





UCR Crimes by GeoArea

Required Parameters
 Reporting Period: Feb 2018
 Agency: OCEANSIDE

Optional Parameters
 Geographical Area: All Beats
 Group by: Agency Select by: Neighborhood

Prior Report Number: S1STA120

Neighborhood	MURDER	RAPE (HISTORICAL)	RAPE (HISTORICAL)	ROBBERY—	AGGRVD	VIOLENT	—BURGLARY—	—LARCENY—THEFT—	M.VEH	PROPERTY	CRIME	CAR					
				ARMED	ST/ ARM	ASSAULT	CRM TL	RESID	NRESID	TOTAL	\$400+	<\$400	TOTAL	THEFT	CRM TL	IDX TL	PROWL

Agency = OCEANSIDE	*****																
AIRPORT	0	0	0	0	0	0	0	1	1	2	0	4	4	0	6	6	3
EASTSIDE/CAPISTRANO	0	1	1	2	0	5	8	1	1	2	3	3	6	1	9	17	4
FIRE MOUNTAIN	0	0	0	1	1	2	4	1	2	3	4	14	18	4	25	29	7
GUAJOME	0	0	0	0	0	0	0	1	0	1	2	6	8	1	10	10	4
IVY RAN/RAN DEL ORO	0	0	0	0	0	1	1	1	4	5	10	9	19	9	33	34	11
LAKE	0	1	1	0	0	0	1	0	0	0	3	8	11	3	14	15	1
MIRA COSTA	0	0	0	0	0	0	0	4	2	6	2	5	7	10	23	23	5
MISSN MESALOMA ALTA	0	0	0	0	1	1	2	0	0	0	3	16	19	0	19	21	8
MORRO HILLS	0	0	0	0	0	1	1	1	0	1	1	3	4	0	5	6	4
NORTH VALLEY	0	0	0	0	0	2	2	1	0	1	4	3	7	1	9	11	6
OCEAN HILLS	0	0	0	0	0	0	0	1	0	1	0	0	0	0	1	1	0
OCEANA	0	0	0	1	0	1	2	1	0	1	1	1	2	0	3	5	2
SAN LUIS REY	0	0	0	0	0	7	7	3	1	4	8	15	23	5	32	39	10
SOUTH OCEANSIDE	0	0	0	0	0	3	3	2	2	4	1	6	7	3	14	17	5
TOWNSITE	0	0	0	1	3	7	11	2	0	2	13	21	34	6	42	53	13
TRI CITY	0	1	1	0	0	0	1	0	0	0	1	2	3	2	5	6	0
UNKNOWN	0	0	0	0	0	2	2	0	0	0	0	0	0	0	0	2	0
SUB-TOTAL	0	3	3	5	5	32	45	20	13	33	56	116	172	45	250	295	83
GRAND TOTALS	0	3	3	5	5	32	45	20	13	33	56	116	172	45	250	295	83



UCR Crimes by GeoArea

Required Parameters
Reporting Period: Jan 2018 to Feb 2018
Agency: OCEANSIDE

Optional Parameters
Geographical Area: All Beats
Group by: Agency Select by: Neighborhood

Prior Report Number: S1STA120

Neighborhood	MURDER	RAPE (HISTORICAL)	RAPE (HISTORICAL)	ROBBERY—	AGGRVD	VIOLENT	BURGLARY—	TOTAL	\$400+	LARCENY-THEFT—	TOTAL	THEFT	CRM TL	IDX TL	CRIME	CAR
				ARMED	ST/ ARM	CRM TL	NRESID	TOTAL			TOTAL		CRM TL	IDX TL		
AIRPORT	0	0	0	0	1	1	2	3	4	7	11	2	16	18	6	
EASTSIDE/CAPISTRANO	0	2	2	2	0	11	6	8	8	7	15	2	25	40	8	
FIRE MOUNTAIN	0	1	1	2	2	5	3	11	16	32	48	5	64	74	14	
GUAJOME	0	0	0	0	1	0	1	1	6	20	26	1	28	29	15	
IVY RAN/RAN DEL ORO	0	0	0	0	2	2	5	13	27	32	59	15	87	89	31	
LAKE	0	1	1	1	1	0	0	0	8	18	26	6	32	35	5	
MIRA COSTA	0	0	0	0	1	1	5	8	7	17	24	15	52	53	16	
MISSN MESA/LOMA ALTA	0	0	0	0	1	7	2	5	6	38	44	4	53	61	17	
MORRO HILLS	0	0	0	0	2	2	1	1	1	4	5	3	9	11	5	
NORTH VALLEY	0	0	0	0	4	4	8	10	11	10	21	7	38	42	16	
OCEAN HILLS	0	0	0	0	1	1	4	4	1	6	7	0	11	12	6	
OCEANA	0	1	1	1	0	1	2	3	2	5	7	1	11	14	6	
SAN LUIS REY	0	0	0	0	3	8	9	12	15	50	65	15	92	103	31	
SOUTH OCEANSIDE	0	1	1	0	0	4	3	5	3	15	18	7	30	35	7	
TOWNSITE	1	1	1	2	4	17	3	7	28	49	77	6	90	115	30	
TRI CITY	0	1	1	0	0	1	1	1	7	9	16	4	21	23	4	
UNKNOWN	0	0	0	0	0	2	0	0	1	0	1	1	2	4	1	
SUB-TOTAL	1	8	8	8	13	67	55	97	151	319	470	94	661	758	218	
GRAND TOTALS	1	8	8	8	13	67	55	97	151	319	470	94	661	758	218	