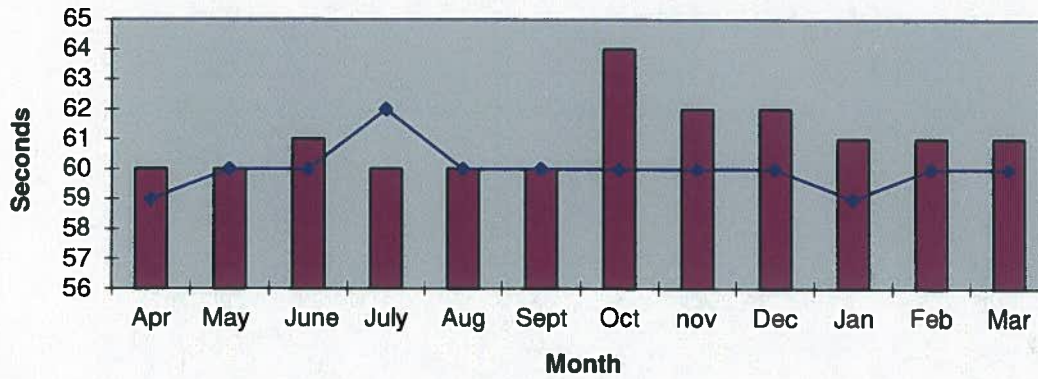
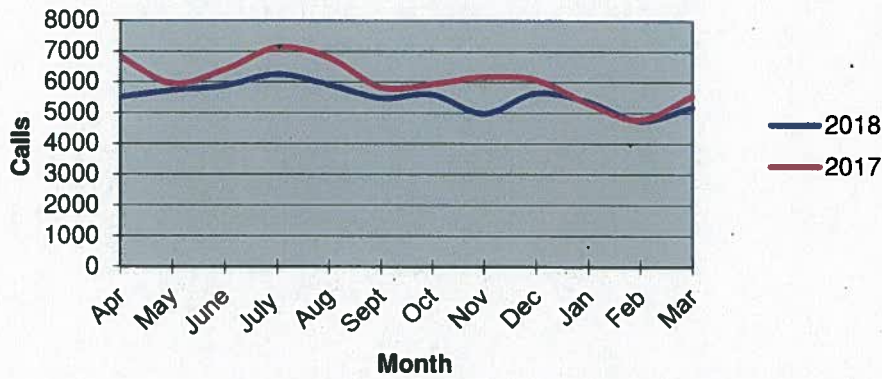


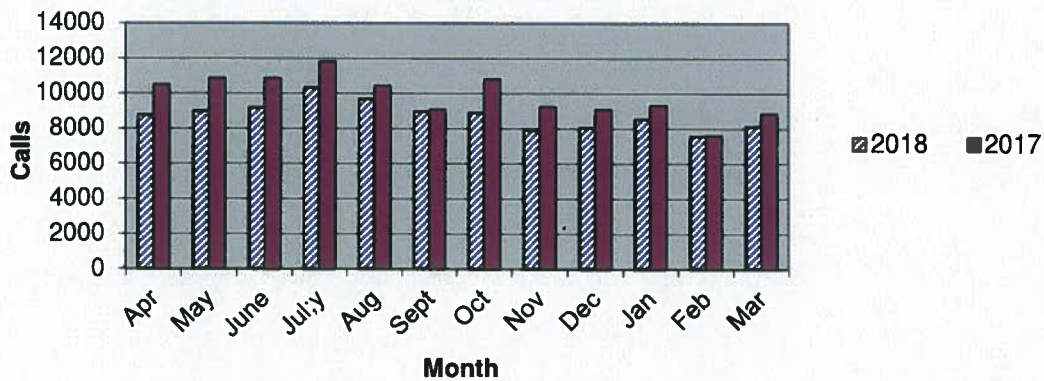
Priority 1 Dispatch Times- Police



911 Calls



Calls for Service

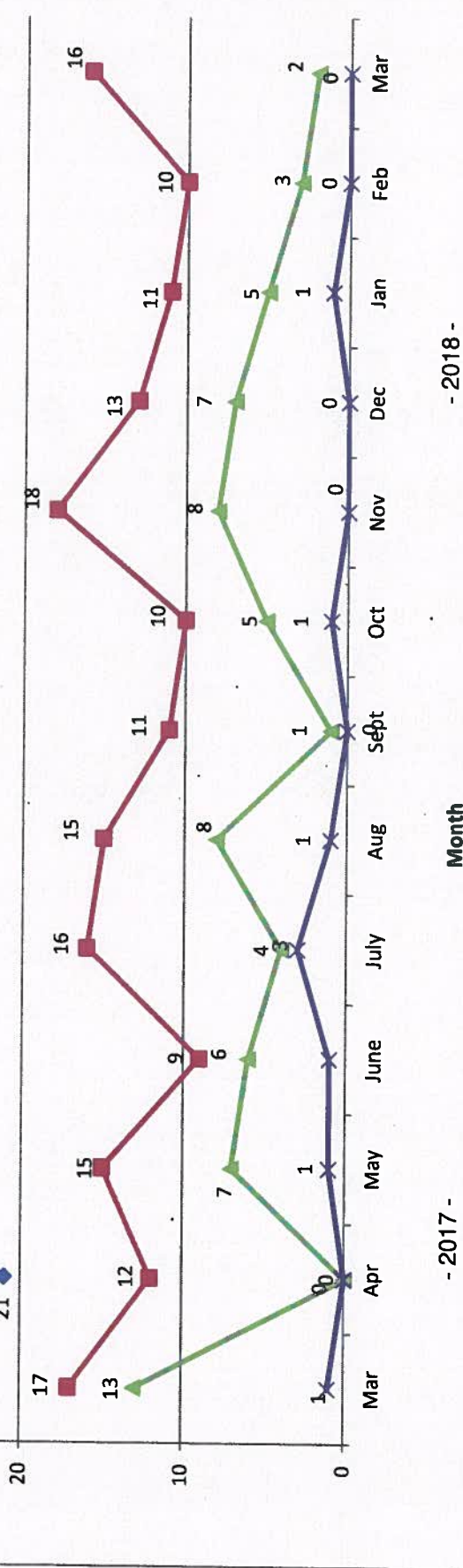
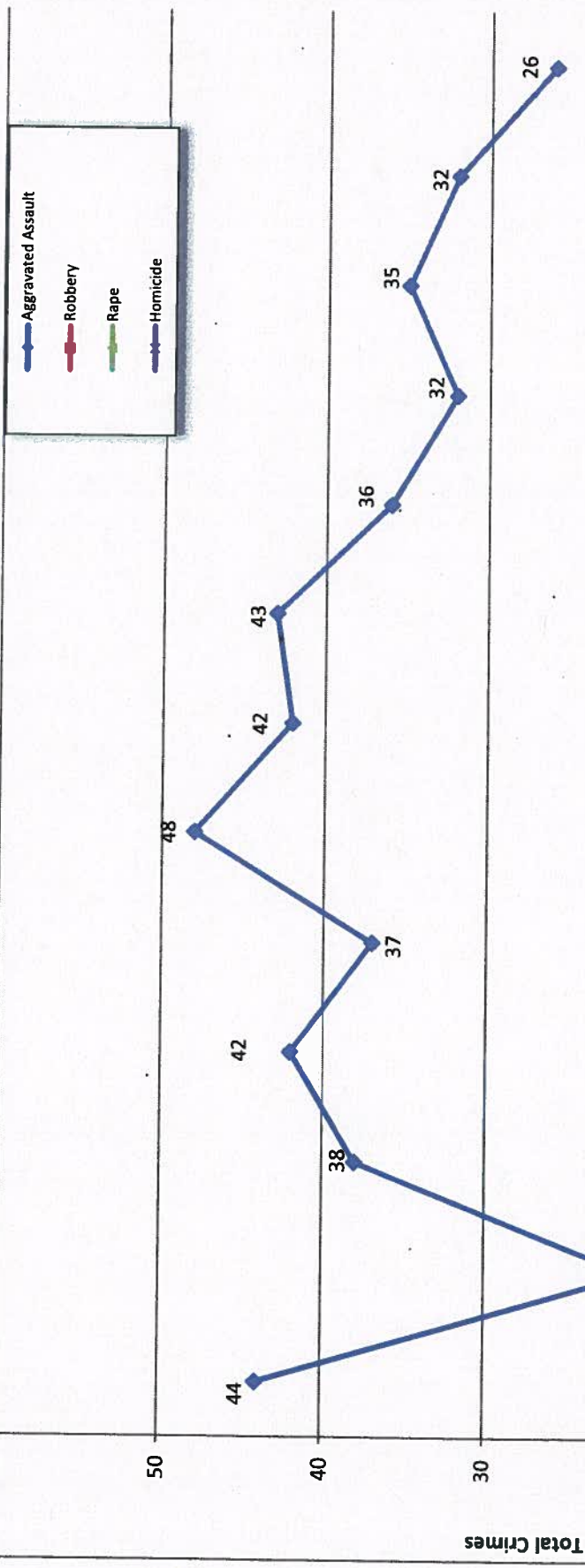


OCEANSIDE POLICE DEPARTMENT FBI INDEX CRIMES

MONTHLY CASE ACTIVITY 2018

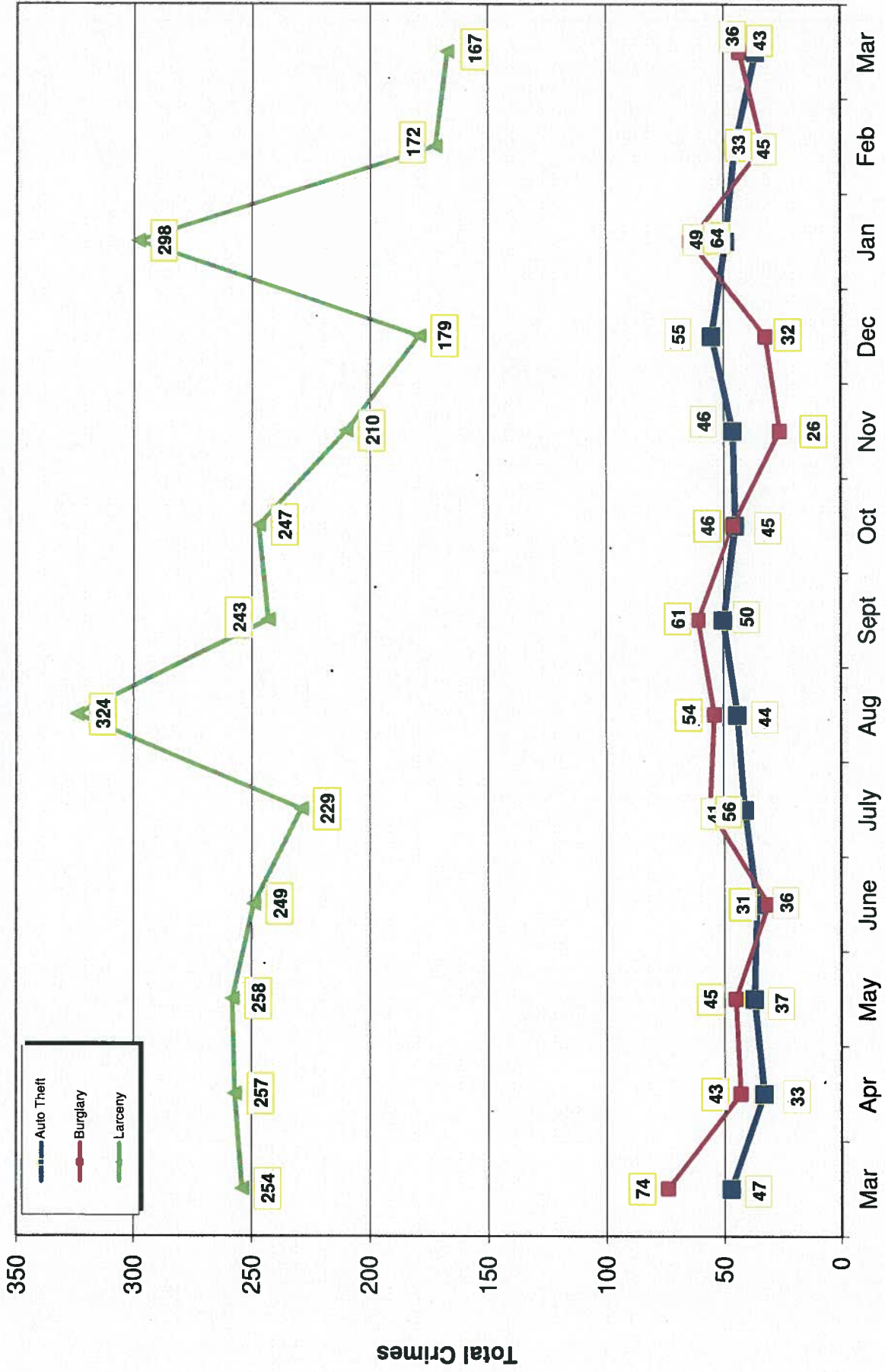
	MONTHLY CASE ACTIVITY 2018												YEAR TO DATE COMPARISON		% CHANGE	
	JAN	FEB	MAR	APR	MAY	JUN	JUL	AUG	SEP	OCT	NOV	DEC	2017	2018		CHANGE
1. HOMICIDE	1	0	0	0									2	1	-1	-50.0%
	1	0	0	0									2	1	-1	-50.0%
2. RAPE	5	3	2										23	10	-13	-56.5%
	3	1	1										11	5	-6	-54.5%
3. ROBBERY	11	10	16										46	37	-9	-19.6%
	3	1	3										20	7	-13	-65.0%
4. AGGR. ASSAULT	35	32	26										111	93	-18	-16.2%
	16	9	15										44	40	-4	-9.1%
5. BURGLARY	64	33	43										198	140	-58	-29.3%
	5	4	4										12	13	1	8.3%
6. LARCENY THEFT	298	172	167										804	637	-167	-20.8%
	27	16	15										46	58	12	26.1%
7. AUTO THEFT	49	45	36										109	130	21	19.3%
	2	2	2										8	6	-2	-25.0%
TOTAL INDEX CRIMES	463	295	290										1293	1048	-245	-18.9%
	57	33	40										143	130	-13	-9.1%
TOTAL PERSON CRIMES	52	45	44										182	141	-41	-22.5%
	23	11	19										77	53	-24	-31.2%
TOTAL PROPERTY CRIMES	411	250	246										1111	907	-204	-18.4%
	34	22	21										66	77	11	16.7%
ARSON	3	1	0										6	4	-2	-33.3%
Y-T-D Loss \$22,010	1	0	0										0	1	1	0.0%

Part 1 Crimes by Month (Violent Crimes) 2018



- 2017 - - 2018 -

Part 1 Crimes by Month (Property Crimes) 2018

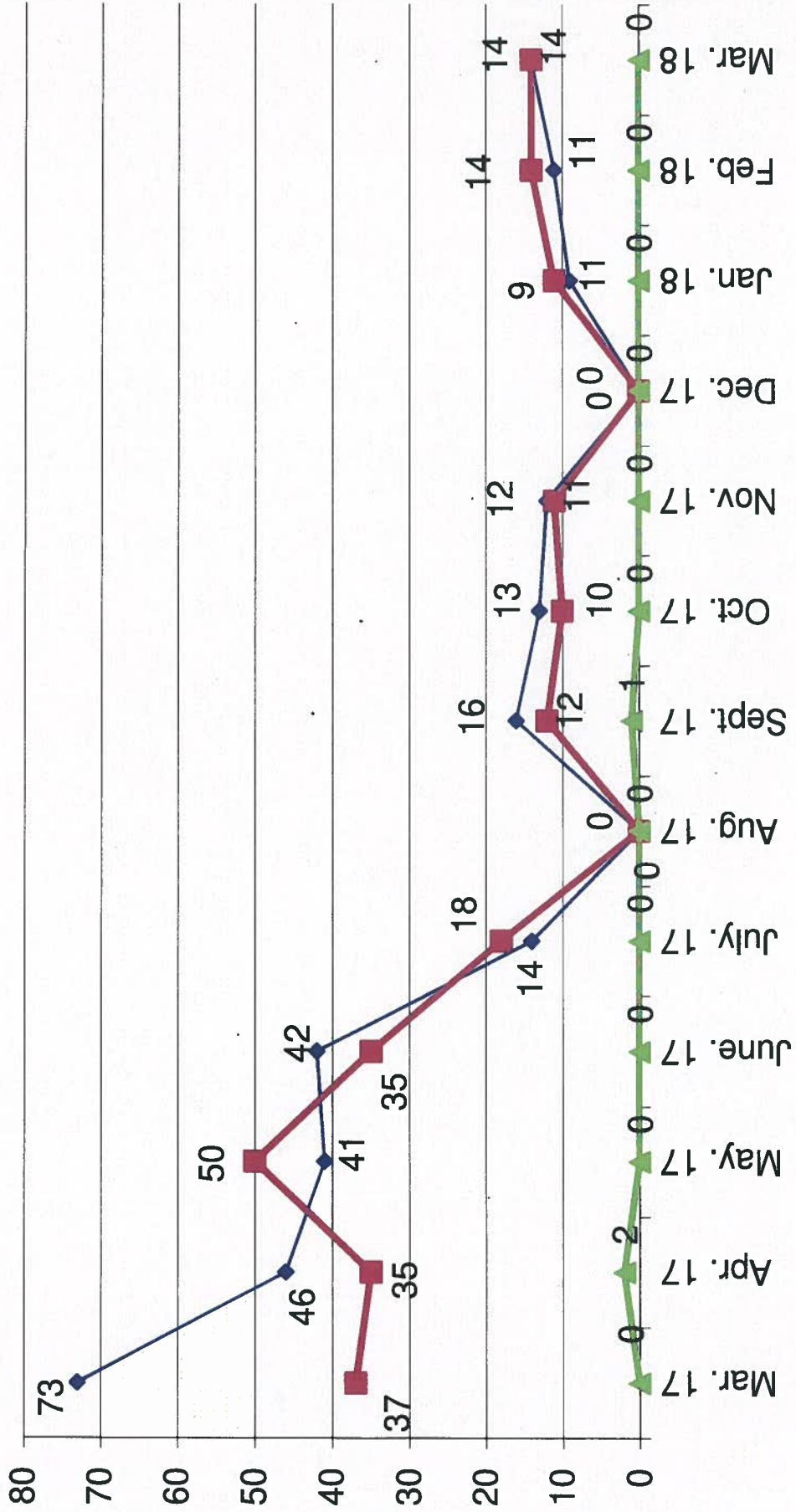
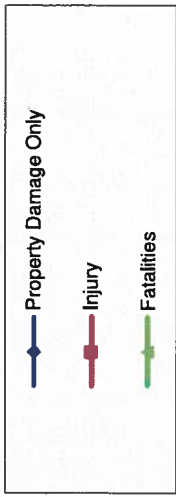


Month

- 2018 -

- 2017 -

Traffic Collisions February 2017 - February 2018





UCR Crimes by GeoArea

Required Parameters
 Reporting Period: Mar 2018
 Agency: OCEANSIDE

Optional Parameters
 Geographical Area: All Beats
 Group by: Agency Select by: Neighborhood

Prior Report Number: S1STA120

Neighborhood	MURDER	RAPE (HISTORICAL)	RAPE (HISTORICAL)	ROBBERY—	AGGRVD	VIOLENT	BURGLARY—	—LARCENY—THEFT—	M.VEH	PROPERTY	CRIME	CAR				
			ARMED	ST/	ASSAULT	CRM TL	RESID	NRESID	TOTAL	\$400+	<\$400	TOTAL	THEFT	CRM TL	IDX TL	PROWL
			ARM	ARM												
Agency = OCEANSIDE																
AIRPORT	0	0	0	0	1	2	0	0	0	2	5	7	1	8	10	5
EASTSIDE/CAPISTRANO	0	0	0	0	3	3	1	2	3	6	3	9	3	15	18	7
FIRE MOUNTAIN	0	0	0	0	1	1	0	1	1	7	10	17	1	19	20	8
GUAJOME	0	1	1	1	1	3	0	2	2	2	6	8	3	13	16	3
IVY RAN/RAN DEL ORO	0	-1	1	0	2	4	1	2	3	5	11	16	5	24	28	8
LAKE	0	0	0	2	0	3	0	0	0	2	9	11	1	12	15	3
MIRA COSTA	0	0	0	0	2	2	4	2	6	5	3	8	4	18	20	4
MISSN MESALOMA ALTA	0	0	0	0	1	4	2	0	2	2	12	14	5	21	25	6
MORRO HILLS	0	0	0	0	2	2	1	0	1	0	2	2	0	3	5	0
NORTH VALLEY	0	0	0	0	1	3	1	0	1	0	6	6	4	11	14	5
OCEAN HILLS	0	0	0	0	0	0	0	0	0	1	-1	0	0	0	0	0
OCEANA	0	0	0	0	0	0	0	1	1	1	1	2	0	3	3	1
SAN LUIS REY	0	0	0	3	0	2	3	4	7	4	14	18	2	27	29	11
SOUTH OCEANSIDE	0	0	0	1	0	1	3	0	3	3	7	10	1	14	15	2
TOWNSITE	0	2	2	0	3	11	5	7	12	12	19	31	5	48	59	17
TRI CITY	0	0	0	1	0	3	0	1	1	0	8	8	1	10	13	2
UNKNOWN	0	0	0	0	0	0	0	0	0	0	0	0	0	0	0	0
SUB-TOTAL	0	2	2	8	8	26	44	21	43	52	115	167	36	246	290	82
GRAND TOTALS	0	2	2	8	8	26	44	21	43	52	115	167	36	246	290	82



UCR Crimes by GeoArea

Required Parameters: Reporting Period: Jan 2018 to Mar 2018 Agency: OCEANSIDE
Optional Parameters: Geographical Area: All Beats Group by: Agency Select by: Neighborhood Prior Report Number: S1STA120

Neighborhood	MURDER	RAPE (HISTORICAL)	RAPE (HISTORICAL)	ROBBERY—	ARMED	ST/ ARM	ASSAULT	CRM TL	RESID	NRESID	TOTAL	\$400+	<\$400	TOTAL	THEFT	CRM TL	IDX TL	CRIME	CAR	
				ROBBERY—	ARMED	ST/ ARM	ASSAULT	CRM TL	RESID	NRESID	TOTAL	\$400+	<\$400	TOTAL	THEFT	CRM TL	IDX TL	CRIME	CAR	
				ROBBERY—	ARMED	ST/ ARM	ASSAULT	CRM TL	RESID	NRESID	TOTAL	\$400+	<\$400	TOTAL	THEFT	CRM TL	IDX TL	CRIME	CAR	
Agency = OCEANSIDE																				
AIRPORT	0	0	0	0	0	2	2	4	2	1	3	6	12	18	3	24	28	11	11	
EASTSIDE/CAPISTRANO	0	2	2	2	0	14	14	18	7	4	11	14	10	24	5	40	58	15	15	
FIRE MOUNTAIN	0	1	1	2	2	6	6	11	3	9	12	23	42	65	6	83	94	22	22	
GUAJOME	0	1	1	1	1	1	1	4	1	2	3	8	26	34	4	41	45	18	18	
IVY RANIRAN DEL ORO	0	-1	1	0	2	5	5	6	6	10	16	32	43	75	20	111	117	39	39	
LAKE	0	1	1	3	1	1	1	6	0	0	0	10	27	37	7	44	50	8	8	
MIRA COSTA	0	0	0	0	0	3	3	3	9	10	19	12	20	32	19	70	73	20	20	
MISSN MESALOMA ALTA	0	0	0	0	2	10	10	12	4	3	7	8	50	58	9	74	86	23	23	
MORRO HILLS	0	0	0	0	0	4	4	4	2	0	2	1	6	7	3	12	16	5	5	
NORTH VALLEY	0	0	0	0	1	6	6	7	9	2	11	11	16	27	11	49	56	21	21	
OCEAN HILLS	0	0	0	0	0	1	1	1	4	0	4	2	5	7	0	11	12	6	6	
OCEANA	0	1	1	1	0	1	1	3	2	2	4	3	6	9	1	14	17	7	7	
SAN LUIS REY	0	0	0	3	3	7	7	13	12	7	19	19	64	83	17	119	132	42	42	
SOUTH OCEANSIDE	0	1	1	1	0	4	4	6	6	2	8	6	22	28	8	44	50	9	9	
TOWNSITE	1	3	3	2	7	23	23	36	8	11	19	40	68	109	11	138	174	47	47	
TRI CITY	0	1	1	1	0	3	3	5	1	1	2	7	17	24	5	31	36	6	6	
UNKNOWN	0	0	0	0	0	2	2	2	0	0	0	1	0	1	1	2	4	1	1	
SUB-TOTAL	1	10	10	16	21	93	93	141	76	64	140	203	434	637	130	907	1,048	300	300	
GRAND TOTALS	1	10	10	16	21	93	93	141	76	64	140	203	434	637	130	907	1,048	300	300	