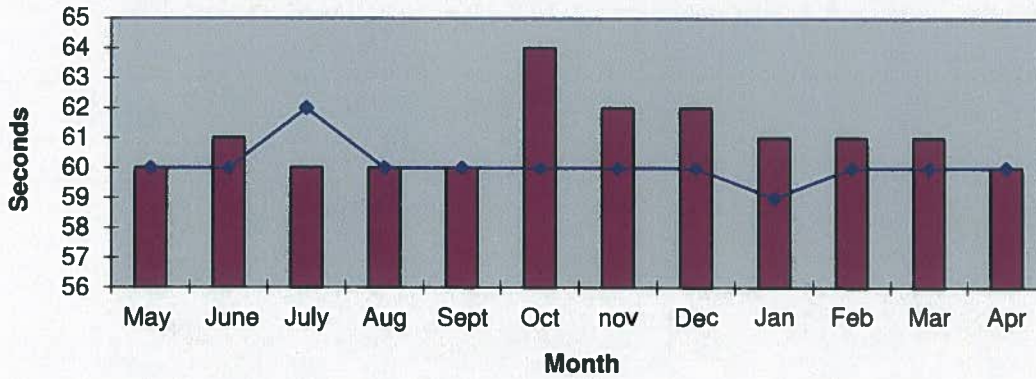
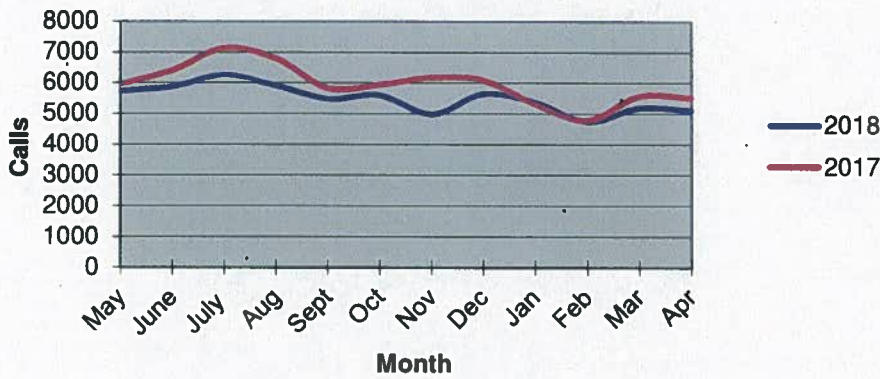


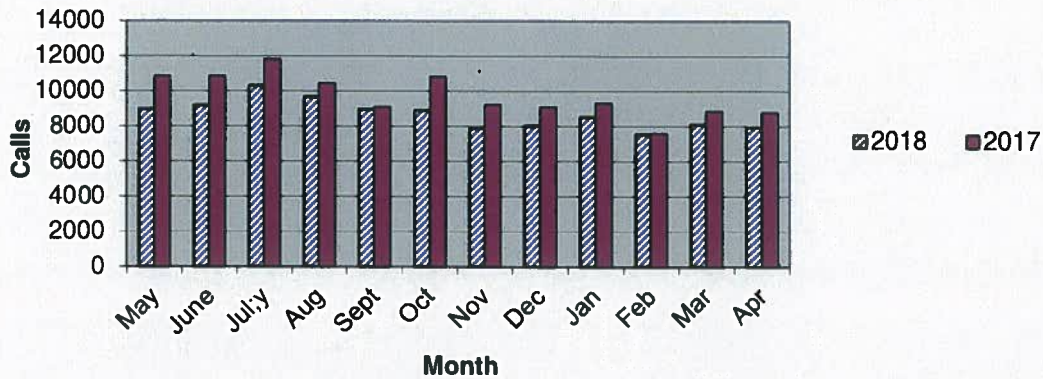
Priority 1 Dispatch Times- Police



911 Calls



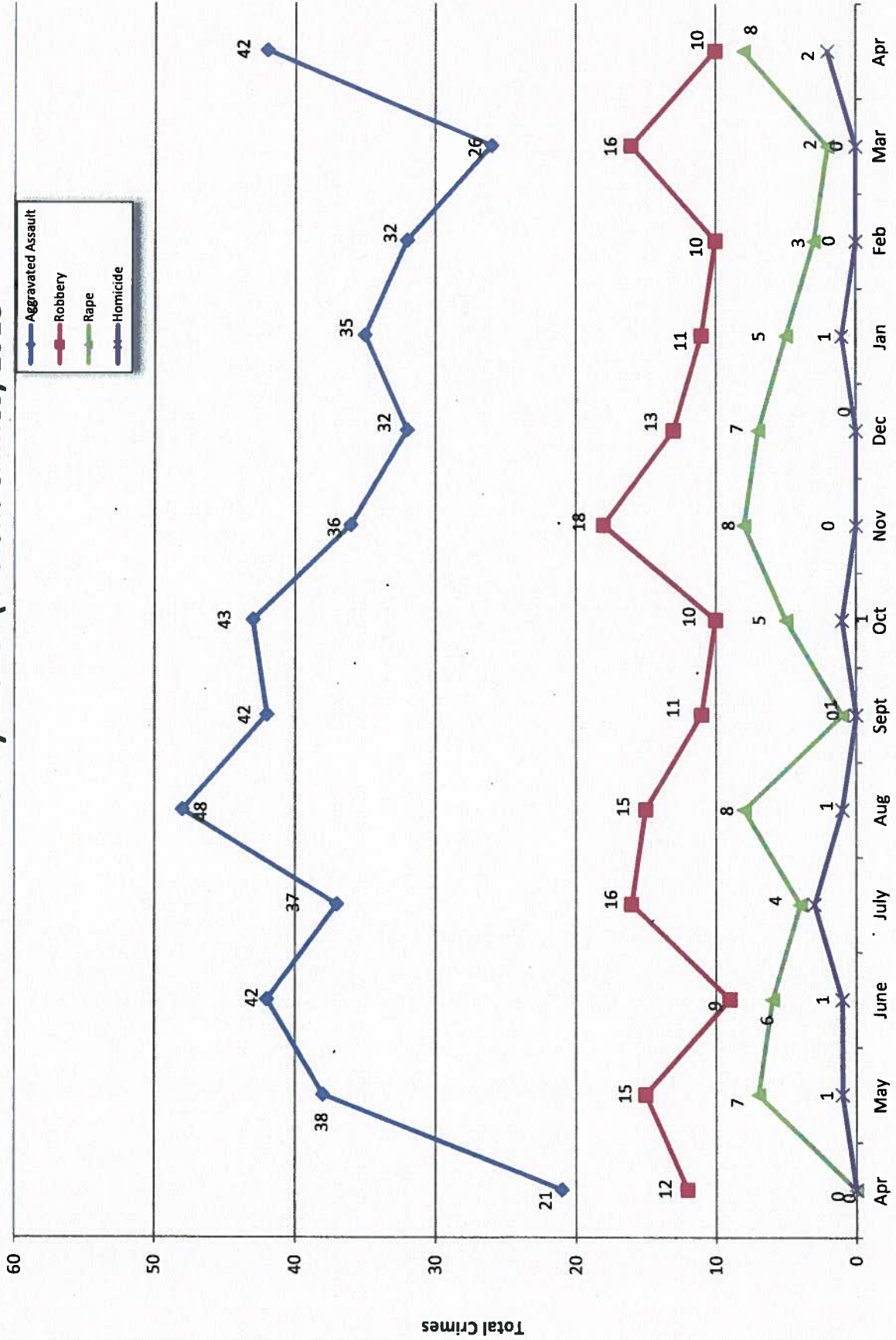
Calls for Service



**OCEANSIDE POLICE DEPARTMENT
FBI INDEX CRIMES**

	MONTHLY CASE ACTIVITY 2018												YEAR TO DATE COMPARISON		% CHANGE	
	JAN	FEB	MAR	APR	MAY	JUN	JUL	AUG	SEP	OCT	NOV	DEC	2017	2018		
	CHANGE	CHANGE	CHANGE	CHANGE	CHANGE	CHANGE	CHANGE	CHANGE	CHANGE	CHANGE	CHANGE	CHANGE	CHANGE	CHANGE		
1. HOMICIDE	1	0	0	2									2	3	1	50.0%
	Cleared												2	2	0	0.0%
2. RAPE	5	3	2	8									23	18	-5	-21.7%
	Cleared												12	6	-6	-50.0%
3. ROBBERY	11	10	16	10									58	47	-11	-19.0%
	Cleared												21	11	-10	-47.6%
4. AGGR. ASSAULT	35	32	26	42									132	135	3	2.3%
	Cleared												44	51	7	15.9%
5. BURGLARY	64	33	43	34									241	174	-67	-27.8%
	Cleared												19	22	3	15.8%
6. LARCENY THEFT	298	172	167	187									1061	824	-237	-22.3%
	Cleared												64	71	7	10.9%
7. AUTO THEFT	49	45	36	37									142	167	25	17.6%
	Cleared												13	8	-5	-38.5%
TOTAL INDEX CRIMES	463	295	290	320									1659	1368	-291	-17.5%
	Cleared												175	171	-4	-2.3%
TOTAL PERSON CRIMES	52	45	44	62									215	203	-12	-5.6%
	Cleared												79	70	-9	-11.4%
TOTAL PROPERTY CRIMES	411	250	246	258									1444	1165	-279	-19.3%
	Cleared												96	101	5	5.2%
ARSON	3	1	0	3									8	7	-1	-12.5%
Y-T-D Loss \$60,015	1	0	0	0									0	1	1	100.0%

Part 1 Crimes by Month (Violent Crimes) 2018

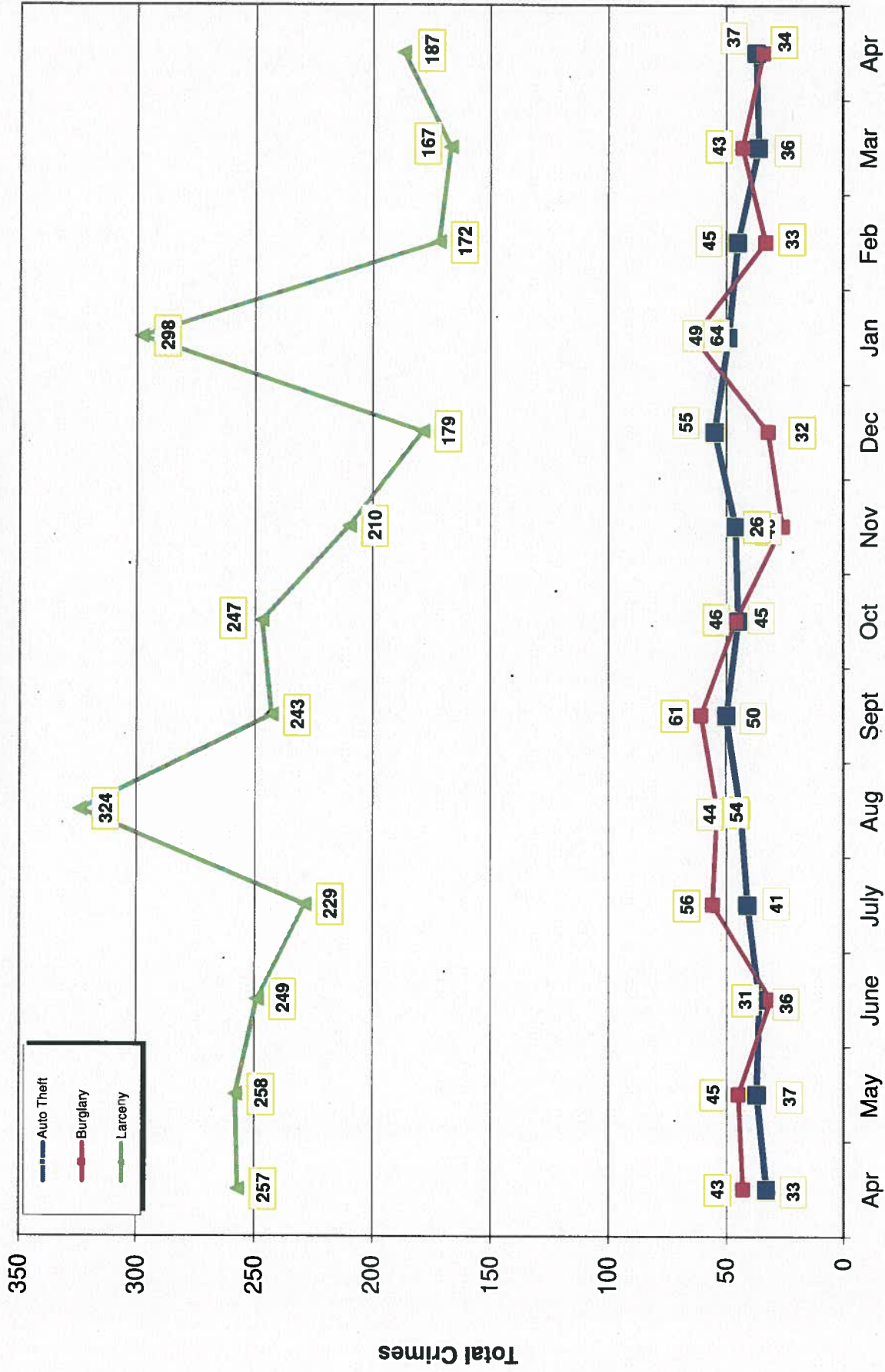


- 2018 -

Month

- 2017 -

Part 1 Crimes by Month (Property Crimes) 2018

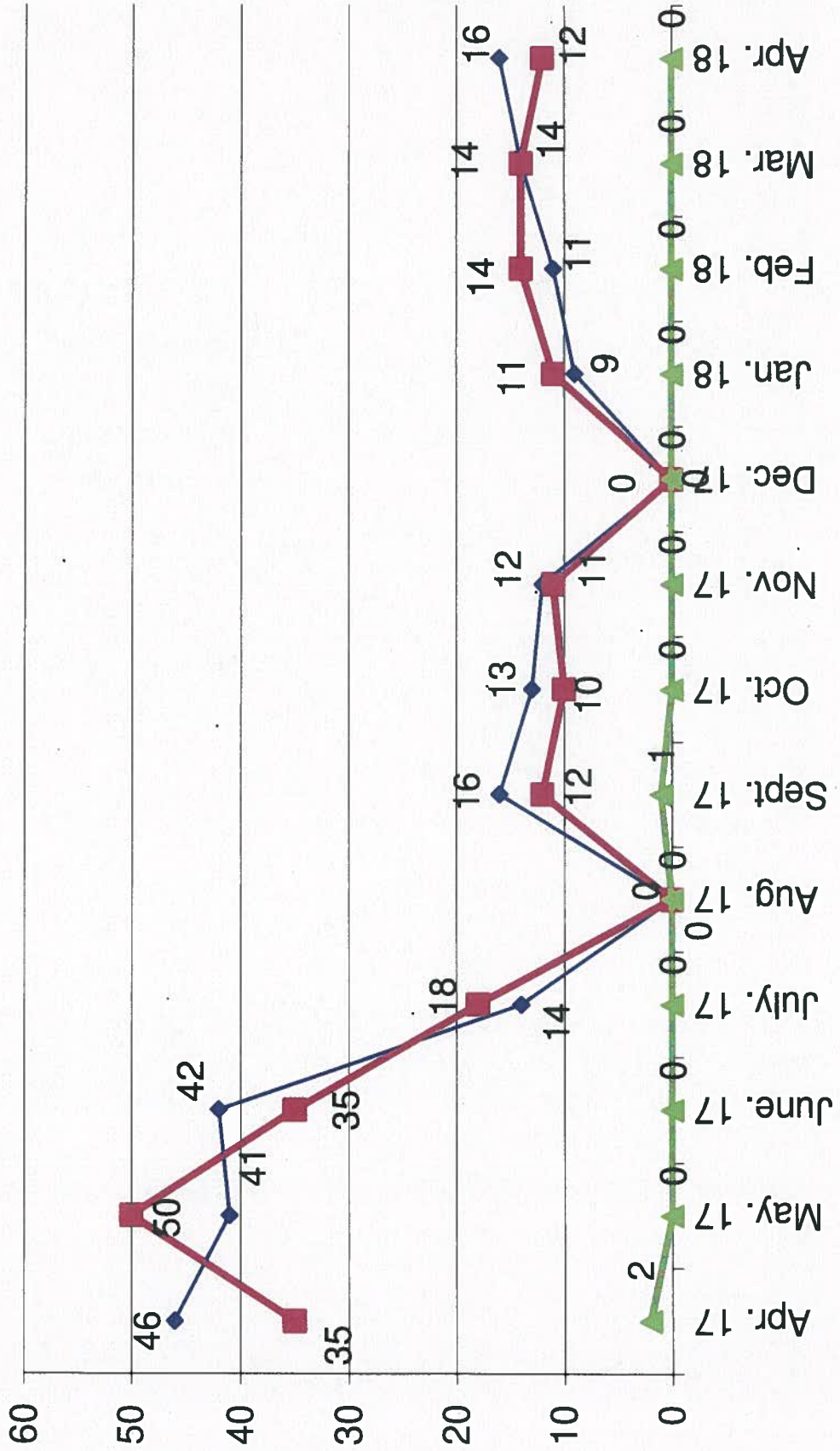
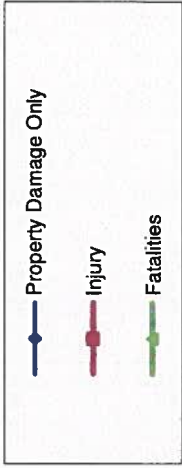


Month

- 2017 -

- 2018 -

Traffic Collisions April 2017 - April 2018





UCR Crimes by GeoArea

Required Parameters
 Reporting Period: Apr 2018
 Agency: OCEANSIDE

Optional Parameters
 Geographical Area: All Beats
 Group by: Agency Select by: Neighborhood

Prior Report Number: S1STA120

Neighborhood	MURDER	RAPE	RAPE (HISTORICAL)	ROBBERY--	AGGRVD	VIOLENT	ASSAULT	CRM TL	RESID	NRESID	TOTAL	\$400+	<\$400	TOTAL	THEFT	CRM TL	PROPERTY	M.VEH	CRIME	CAR	PROWL		
Agency = OCEANSIDE																							
AIRPORT	0	0	0	0	0	0	0	0	0	0	0	0	3	1	4	0	4	0	4	4	2		
EASTSIDE/CAPISTRANO	0	0	0	0	0	0	1	3	0	0	0	2	6	8	3	11	14	3	11	14	1		
FIRE MOUNTAIN	0	0	0	0	0	0	2	2	0	2	2	7	7	14	1	17	19	1	17	19	3		
GUAJOME	0	-1	0	0	0	0	1	0	0	0	0	6	3	9	1	10	10	1	10	10	4		
IVY RAN/RAN DEL ORO	0	1	0	0	0	0	4	6	3	1	4	5	16	21	4	29	35	4	29	35	15		
LAKE	0	1	1	1	0	0	1	3	0	0	0	1	5	6	1	7	10	1	7	10	0		
MIRA COSTA	0	1	1	1	0	0	5	6	1	1	2	4	5	9	4	15	21	4	15	21	7		
MISSN MESA/LOMA ALTA	0	2	1	1	0	1	3	6	0	1	1	8	12	20	1	22	28	1	22	28	8		
MORRO HILLS	0	0	0	0	1	0	2	3	1	1	2	0	0	0	1	3	6	0	3	6	0		
NORTH VALLEY	0	0	0	0	0	1	3	4	1	5	6	0	2	2	3	11	15	3	11	15	0		
OCEAN HILLS	0	1	1	1	0	0	1	2	0	0	0	0	1	1	0	1	3	0	1	3	1		
OCEANA	0	0	0	0	0	0	2	2	0	0	0	3	1	4	0	4	6	0	4	6	2		
SAN LUIS REY	0	0	0	0	-1	1	2	2	2	1	3	12	8	20	5	28	30	5	28	30	13		
SOUTH OCEANSIDE	0	0	0	0	0	0	1	3	0	3	3	6	7	13	0	16	19	0	16	19	8		
TOWNSITE	0	2	1	1	1	2	11	16	4	4	8	23	23	46	12	66	82	12	66	82	15		
TRICITY	1	1	0	0	0	0	2	4	0	3	3	3	7	10	0	13	17	0	13	17	3		
UNKNOWN	0	0	0	0	0	0	0	0	0	0	0	0	0	0	1	1	1	0	1	1	0		
SUB-TOTAL	2	8	4	3	7	42	62	62	12	22	34	83	104	187	37	258	320	37	258	320	82		
GRAND TOTALS	2	8	4	3	7	42	62	62	12	22	34	83	104	187	37	258	320	37	258	320	82		



UCR Crimes by GeoArea

Required Parameters
 Reporting Period: Jan 2018 to Apr 2018
 Agency: OCEANSIDE

Optional Parameters
 Geographical Area: All Beats
 Group by: Agency Select by: Neighborhood

Prior Report Number: S1STA120

Neighborhood	MURDER	RAPE	RAPE (HISTORICAL)	ROBBERY—	ARMED	ST/ ARM	ASSAULT	CRIM TL	RESID	NRESID	TOTAL	\$400+	<\$400	TOTAL	THEFT	CRM TL	INDEX TL	CRIME	CAR
				ROBBERY—	ARMED	ST/ ARM	ASSAULT	CRIM TL	RESID	NRESID	TOTAL	\$400+	<\$400	TOTAL	THEFT	CRM TL	INDEX TL	CRIME	CAR
				ROBBERY—	ARMED	ST/ ARM	ASSAULT	CRIM TL	RESID	NRESID	TOTAL	\$400+	<\$400	TOTAL	THEFT	CRM TL	INDEX TL	CRIME	CAR
Agency = OCEANSIDE																			
AIRPORT	0	0	0	0	0	0	2	4	2	1	3	9	13	22	3	28	32	13	
EASTSIDE/CAPISTRANO	1	2	2	2	1	1	15	21	7	4	11	16	16	32	8	51	72	16	
FIRE MOUNTAIN	0	1	1	2	2	2	8	13	3	11	14	30	49	79	7	100	113	25	
GUAJOME	0	0	0	1	1	1	2	4	1	2	3	14	29	43	5	51	55	22	
IVY RAN/RAN DEL ORO	0	0	1	1	2	2	9	12	9	11	20	37	59	96	24	140	152	54	
LAKE	0	2	2	4	1	1	2	9	0	0	0	11	32	43	8	51	60	8	
MIRA COSTA	0	1	1	0	0	0	8	9	10	11	21	16	25	41	23	85	94	27	
MISSN MESALOMA ALTA	0	2	1	1	0	3	13	18	4	4	8	16	62	78	10	96	114	31	
MORRO HILLS	0	0	0	1	0	0	6	7	3	1	4	1	6	7	4	15	22	5	
NORTH VALLEY	0	0	0	0	2	2	9	11	10	7	17	11	18	29	14	60	71	21	
OCEAN HILLS	0	1	1	0	0	0	2	3	4	0	4	2	6	8	0	12	15	7	
OCEANA	0	1	1	1	1	0	3	5	2	2	4	6	7	13	1	18	23	9	
SAN LUIS REY	0	0	0	2	4	4	9	15	14	8	22	31	72	103	22	147	162	55	
SOUTH OCEANSIDE	0	1	1	1	1	1	6	9	6	5	11	12	29	41	8	60	69	17	
TOWNSITE	1	5	4	3	9	9	34	52	12	15	27	63	91	154	23	204	256	62	
TRI CITY	1	2	1	1	0	0	5	9	1	4	5	10	24	34	5	44	53	9	
UNKNOWN	0	0	0	0	0	0	2	2	0	0	0	1	0	1	2	3	5	1	
SUB-TOTAL	3	18	14	19	28	28	135	203	88	86	174	286	538	824	167	1,165	1,368	382	
GRAND TOTALS	3	18	14	19	28	28	135	203	88	86	174	286	538	824	167	1,165	1,368	382	