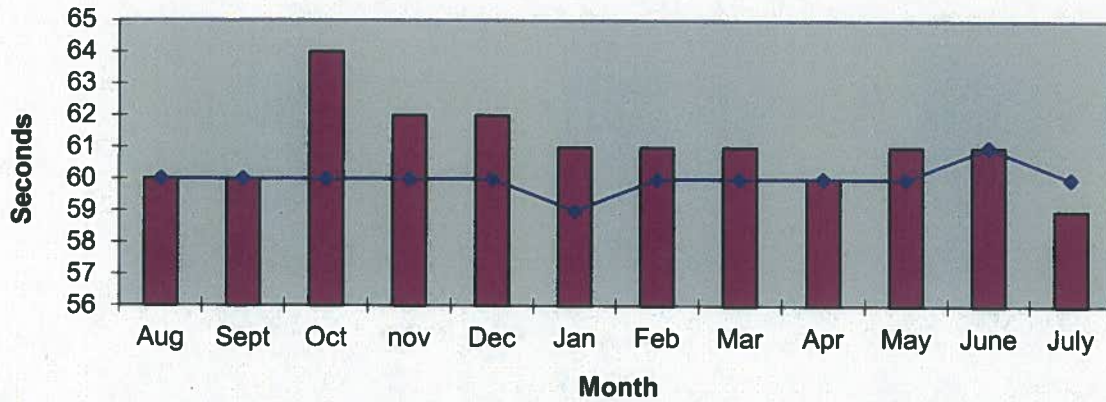
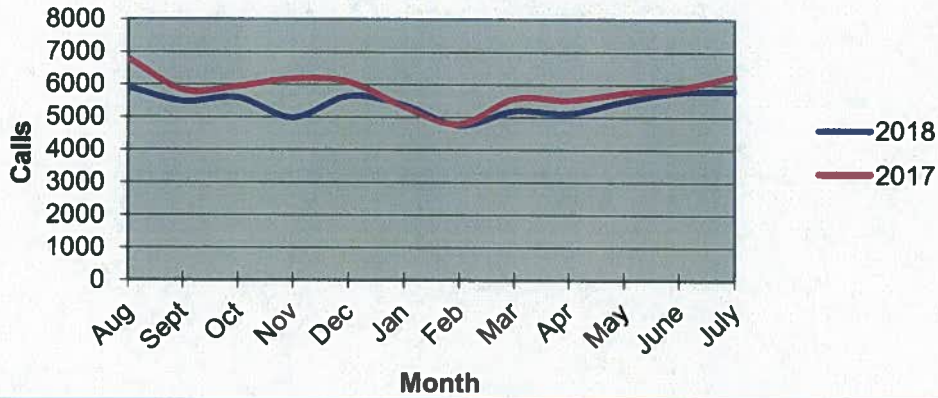


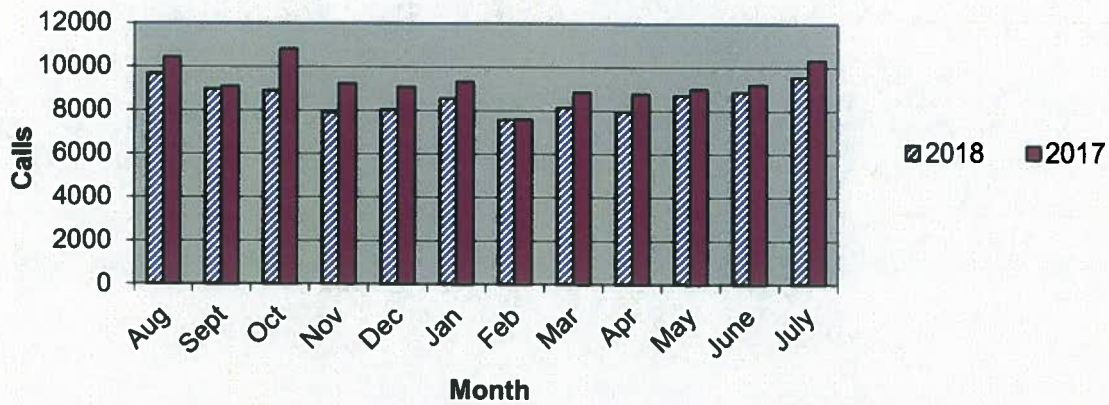
Priority 1 Dispatch Times- Police



911 Calls



Calls for Service

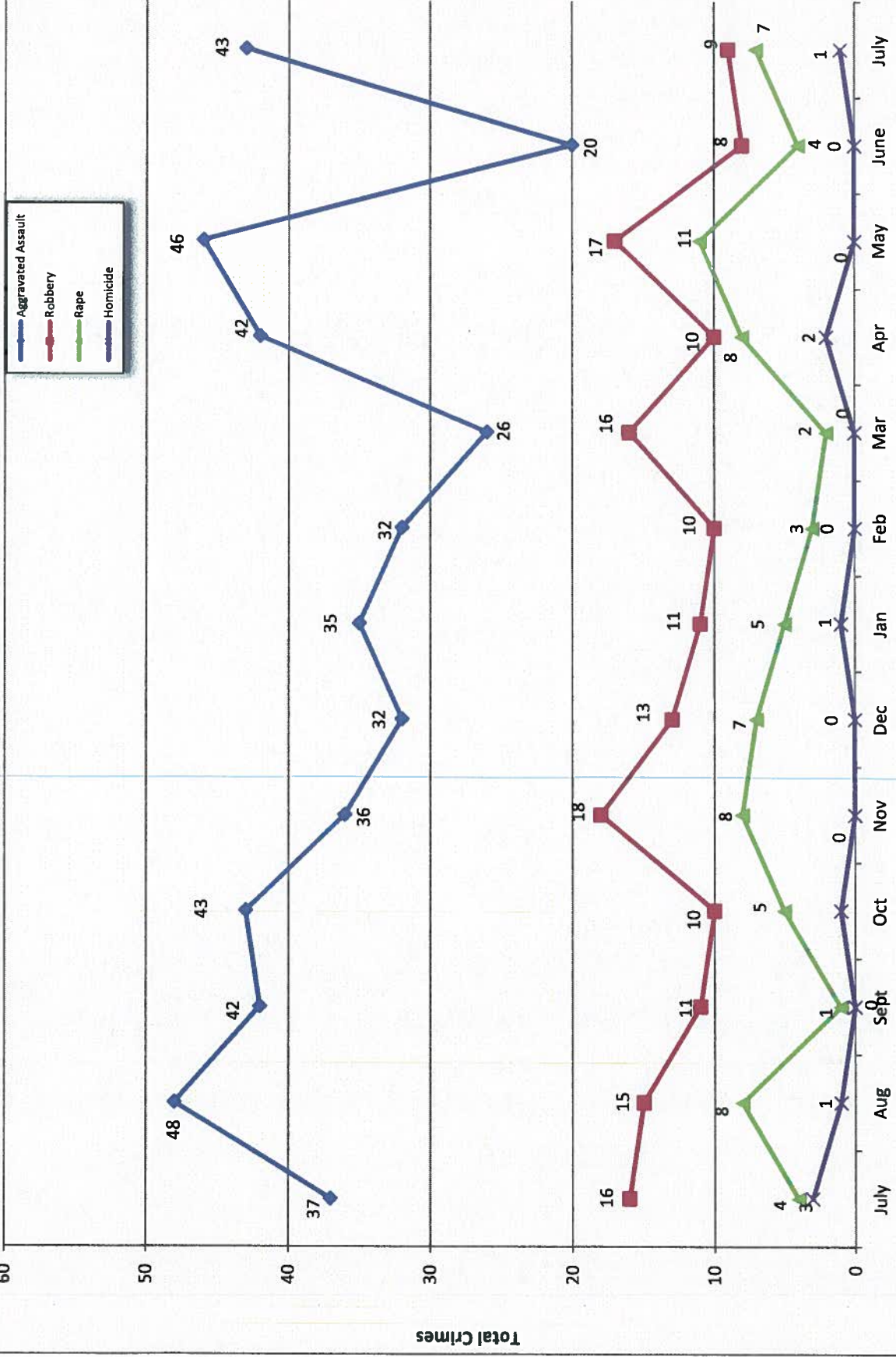


**OCEANSIDE POLICE DEPARTMENT
FBI INDEX CRIMES**

		MONTHLY CASE ACTIVITY 2018												YEAR TO DATE COMPARISON		% CHANGE		
		JAN	FEB	MAR	APR	MAY	JUN	JUL	AUG	SEP	OCT	NOV	DEC	2017	2018			
1. HOMICIDE	Actual Cleared	1	0	0	2	0	0	1							7	4	-3	-42.9%
		1	0	0	1	0	0	1							4	3	-1	-25.0%
2. RAPE	Actual Cleared	5	3	2	8	11	4	7							40	40	0	0.0%
		3	1	1	1	0	0	0							14	6	-8	-57.1%
3. ROBBERY	Actual Cleared	11	10	16	10	17	8	9							98	81	-17	-17.3%
		3	1	3	4	4	2	1							35	18	-17	-48.6%
4. AGGR. ASSAULT	Actual Cleared	35	32	26	42	46	20	43							249	244	-5	-2.0%
		16	9	15	11	16	15	19							95	101	6	6.3%
5. BURGLARY	Actual Cleared	64	33	43	34	54	30	56							373	314	-59	-15.8%
		5	4	4	9	2	4	3							34	31	-3	-8.8%
6. LARCENY THEFT	Actual Cleared	298	172	167	187	333	189	236							1797	1582	-215	-12.0%
		27	16	15	13	15	8	24							136	118	-18	-13.2%
7. AUTO THEFT	Actual Cleared	49	45	36	37	35	39	30							256	271	15	5.9%
		2	2	2	2	1	6	3							18	18	0	0.0%
TOTAL INDEX CRIMES	Actual Cleared	463	295	290	320	496	290	385							2820	2539	-281	-10.0%
		57	33	40	41	88	35	51							336	295	-41	-12.2%
TOTAL PERSON CRIMES	Actual Cleared	52	45	44	62	74	32	60							394	369	-25	-6.3%
		23	11	19	17	20	17	21							148	128	-20	-13.5%
TOTAL PROPERTY CRIMES	Actual Cleared	411	250	246	258	422	258	322							2426	2167	-259	-10.7%
		34	22	21	24	18	18	30							188	167	-21	-11.2%
ARSON	Actual	2	1	0	3	3	2	0							17	11	-6	-35.3%
Y-T-D Loss \$77,016.00	Cleared	1	0	0	0	0	0	0							2	1	-1	-50.0%

Arson number corrected from 3 to 2 KTM #3063 08/17/2018

Part 1 Crimes by Month (Violent Crimes) 2018

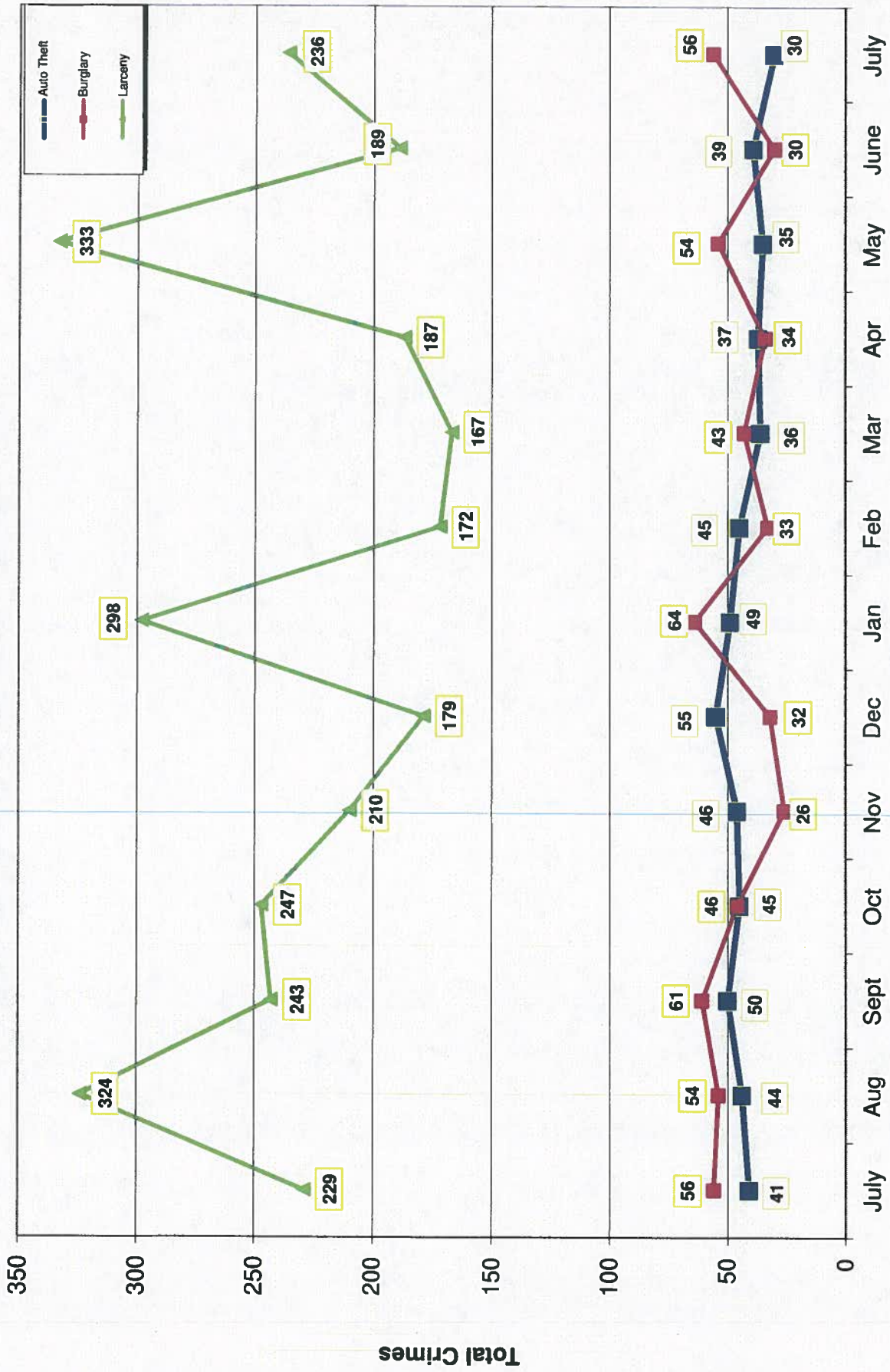


- 2018 -

Month

- 2017 -

Part 1 Crimes by Month (Property Crimes) 2018

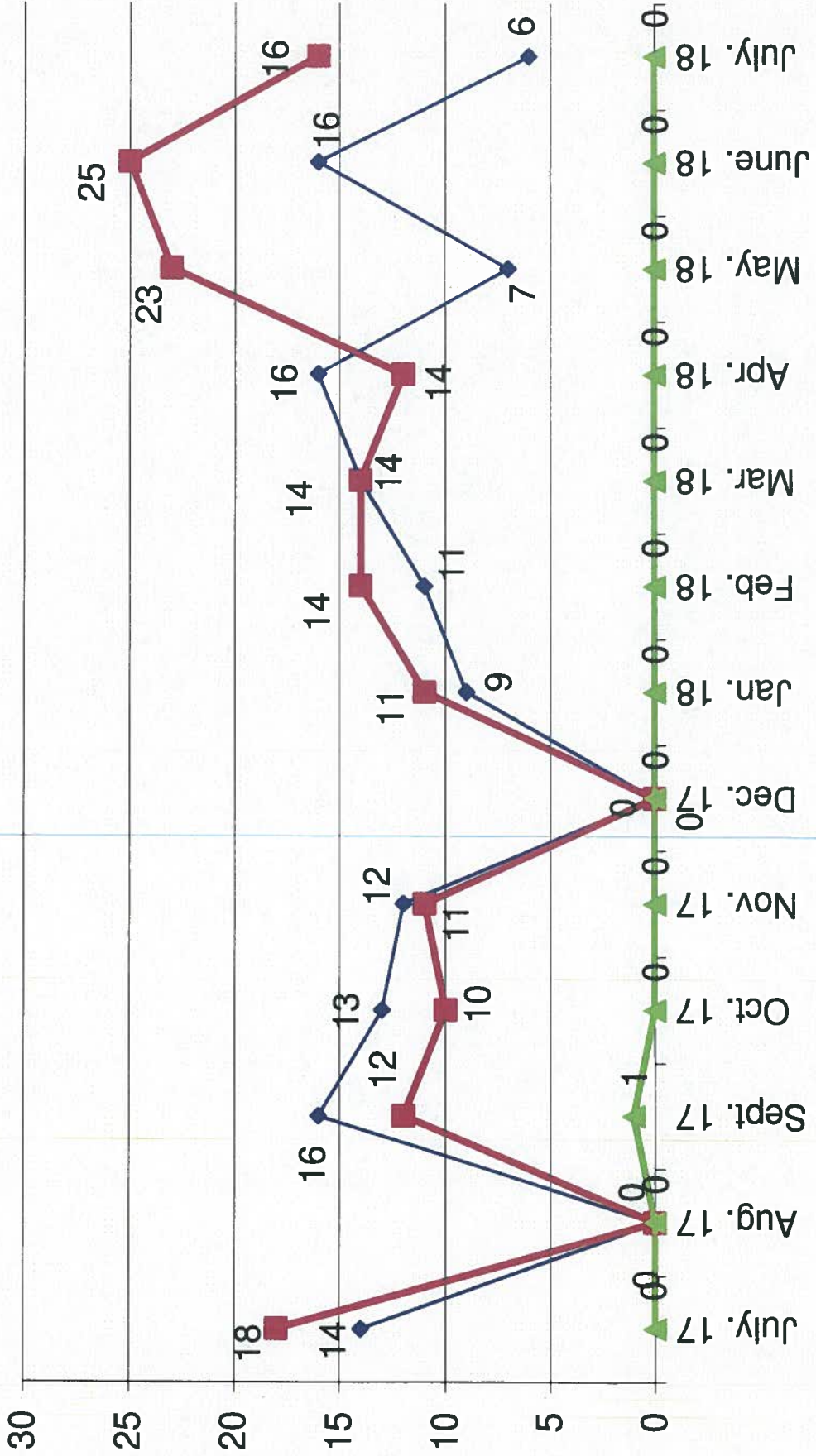
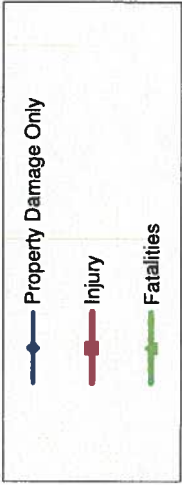


Month

- 2017 -

- 2018 -

Traffic Collisions July 2017 - July 2018





UCR Crimes by GeoArea

Required Parameters
 Reporting Period: Jul 2018
 Agency: OCEANSIDE

Optional Parameters
 Geographical Area: All Beats
 Group by: Agency Select by: Neighborhood

Prior Report Number: S1STA120

Neighborhood	MURDER	RAPE	RAPE (HISTORICAL)	ROBBERY—	AGGRVD	VIOLENT	—BURGLARY—	—LARCENY—THEFT—	TOTAL	THEFT	CRM TL	IDX TL	CRIME	CAR
			ARMED	ST/	ASSAULT	CRM TL	NRESID	\$400+	TOTAL					
			ARM											
Agency = OCEANSIDE														
AIRPORT	0	0	0	0	0	0	0	2	4	6	1	7	7	3
EASTSIDE/CAPISTRANO	0	0	0	0	6	6	1	1	10	11	1	13	19	5
FIRE MOUNTAIN	0	0	0	0	2	2	3	10	12	22	1	26	28	8
GUAJOME	0	1	1	0	2	3	0	2	5	6	0	8	11	3
IVY RAN/RAN DEL ORO	0	1	1	0	6	7	3	14	16	30	5	45	52	16
LAKE	0	0	1	1	1	3	0	2	7	9	4	13	16	2
MIRA COSTA	0	2	2	0	3	5	1	2	6	8	4	15	20	5
MISSN MESALOMA ALTA	0	0	0	0	4	4	6	7	21	27	0	34	38	13
MORRO HILLS	0	0	0	0	0	0	0	1	1	2	2	4	4	1
NORTH VALLEY	0	0	1	0	3	4	3	2	4	6	4	14	18	3
OCEAN HILLS	0	0	0	0	0	0	0	3	2	5	0	5	5	4
OCEANA	0	0	0	0	0	0	1	4	4	8	-1	9	9	4
SAN LUIS REY	1	1	1	0	-1	1	8	6	19	25	0	35	36	11
SOUTH OCEANSIDE	0	0	1	0	2	3	2	3	9	12	0	17	20	1
TOWNSITE	0	3	3	4	1	20	5	19	30	49	8	64	84	14
TRI CITY	0	-1	1-	0	3	2	0	5	5	10	1	13	15	2
UNKNOWN	0	0	0	0	0	0	0	0	0	0	0	0	0	0
SUB-TOTAL	1	7	7	7	43	60	33	81	155	236	30	322	382	95
GRAND TOTALS	1	7	7	7	43	60	33	81	155	236	30	322	382	95



UCR Crimes by GeoArea

Required Parameters
 Reporting Period: Jan 2018 to Jul 2018
 Agency: OCEANSIDE

Optional Parameters
 Geographical Area: All Beats
 Group by: Agency Select by: Neighborhood

Prior Report Number: S1STA120

Neighborhood	ROBBERY--		AGGRVD		VIOLENT		BURGLARY		LARCENY-THEFT--		M.VEH		PROPERTY		CRIME		CAR
	MURDER	RAPE (HISTORICAL)	RAPE	ARMED	ST7 ARM	ASSAULT	CRM TL	RESID	NRESID	TOTAL	\$400+	<\$400	TOTAL	THEFT	CRM TL	IDX TL	
Agency = OCEANSIDE																	
AIRPORT	0	0	0	0	2	2	4	3	1	4	15	28	43	10	57	61	25
EASTSIDE/CAPISTRANO	1	1	4	4	4	29	39	8	5	13	22	38	60	14	87	126	28
FIRE MOUNTAIN	0	1	1	3	5	10	19	3	19	22	58	92	150	12	184	203	57
GUAJOME	0	1	1	1	1	4	7	6	4	10	28	44	72	5	87	94	43
IVY RAN/RAN DEL ORO	0	3	2	2	5	19	29	18	26	44	77	133	210	38	292	321	131
LAKE	0	2	2	4	2	6	14	0	1	1	19	56	75	13	89	103	19
MIRA COSTA	0	3	3	1	0	12	16	13	13	26	31	46	77	30	133	149	48
MISSN MESA/LOMA ALTA	0	4	4	3	5	25	34	15	8	23	31	104	135	16	174	208	59
MORRO HILLS	0	0	0	1	0	6	7	3	3	6	6	13	19	6	31	38	11
NORTH VALLEY	0	1	1	1	2	14	18	18	11	29	19	37	56	25	110	128	42
OCEAN HILLS	0	1	1	0	0	2	3	7	0	7	13	16	29	0	36	39	26
OCEANA	0	1	1	1	0	7	9	3	4	7	14	16	30	1	38	47	17
SAN LUIS REY	1	5	4	3	7	16	32	27	17	44	60	140	200	33	277	309	106
SOUTH OCEANSIDE	0	2	2	2	1	12	17	12	10	22	20	70	90	12	124	141	38
TOWNSITE	1	11	8	8	15	66	101	25	19	44	104	173	277	45	366	467	106
TRI CITY	1	4	3	1	0	12	18	7	5	12	20	38	58	9	79	97	20
UNKNOWN	0	0	0	0	0	2	2	0	0	0	1	0	1	2	3	5	1
SUB-TOTAL	4	40	33	32	49	244	369	168	146	314	538	1,044	1,582	271	2,167	2,536	777
GRAND TOTALS	4	40	33	32	49	244	369	168	146	314	538	1,044	1,582	271	2,167	2,536	777