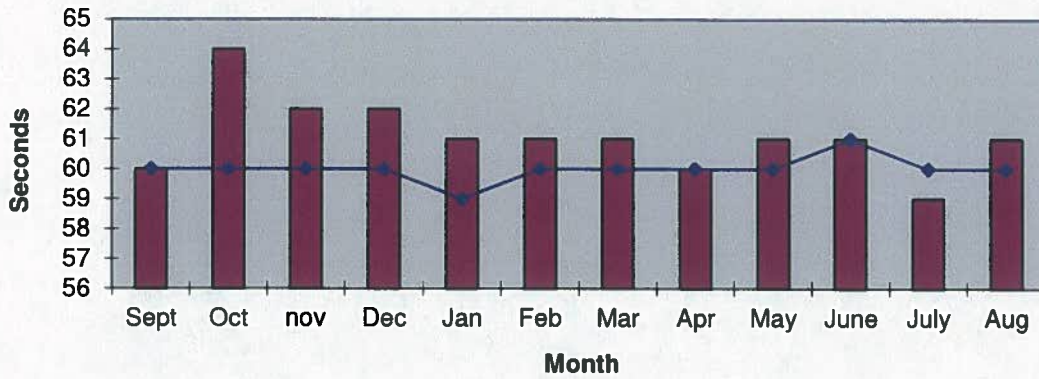
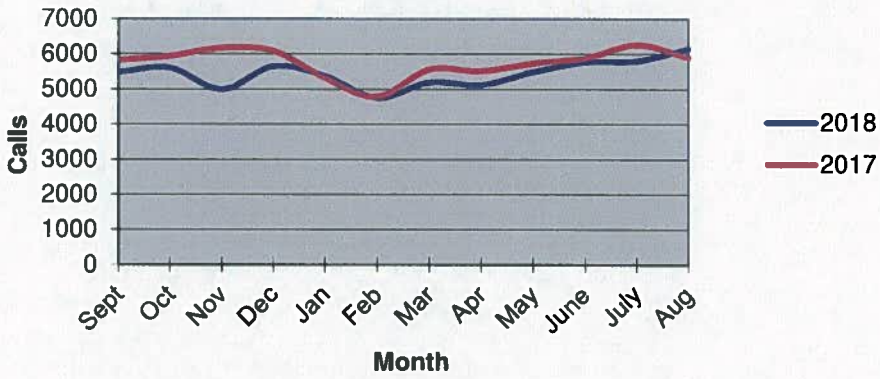


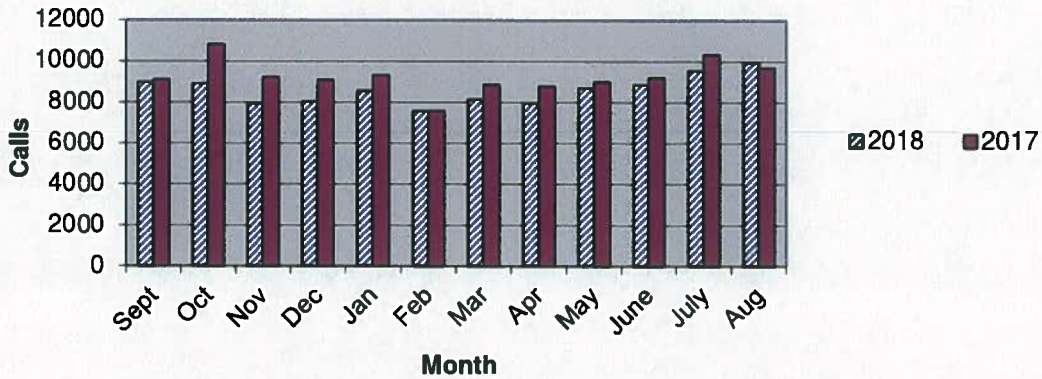
Priority 1 Dispatch Times- Police



911 Calls



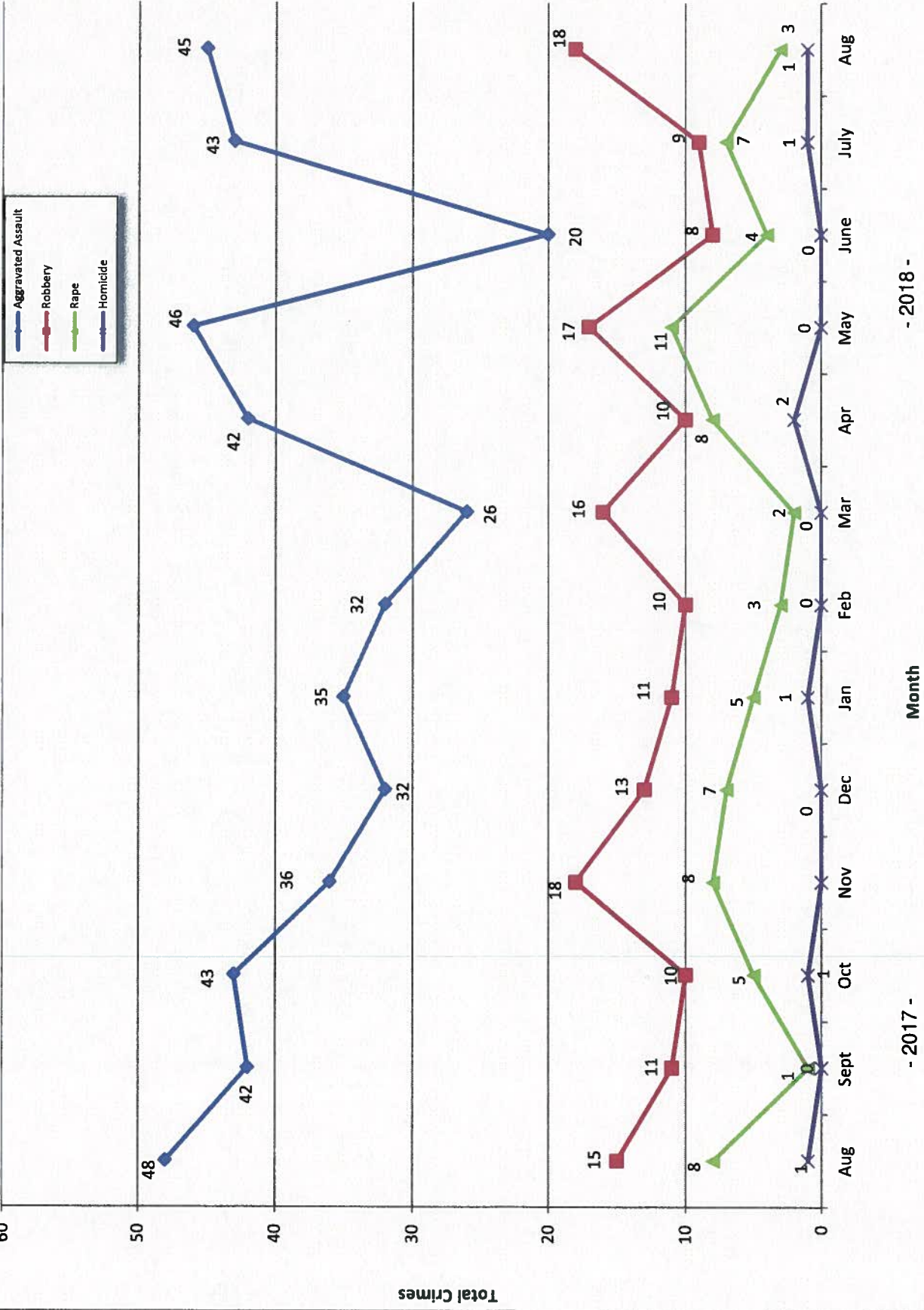
Calls for Service



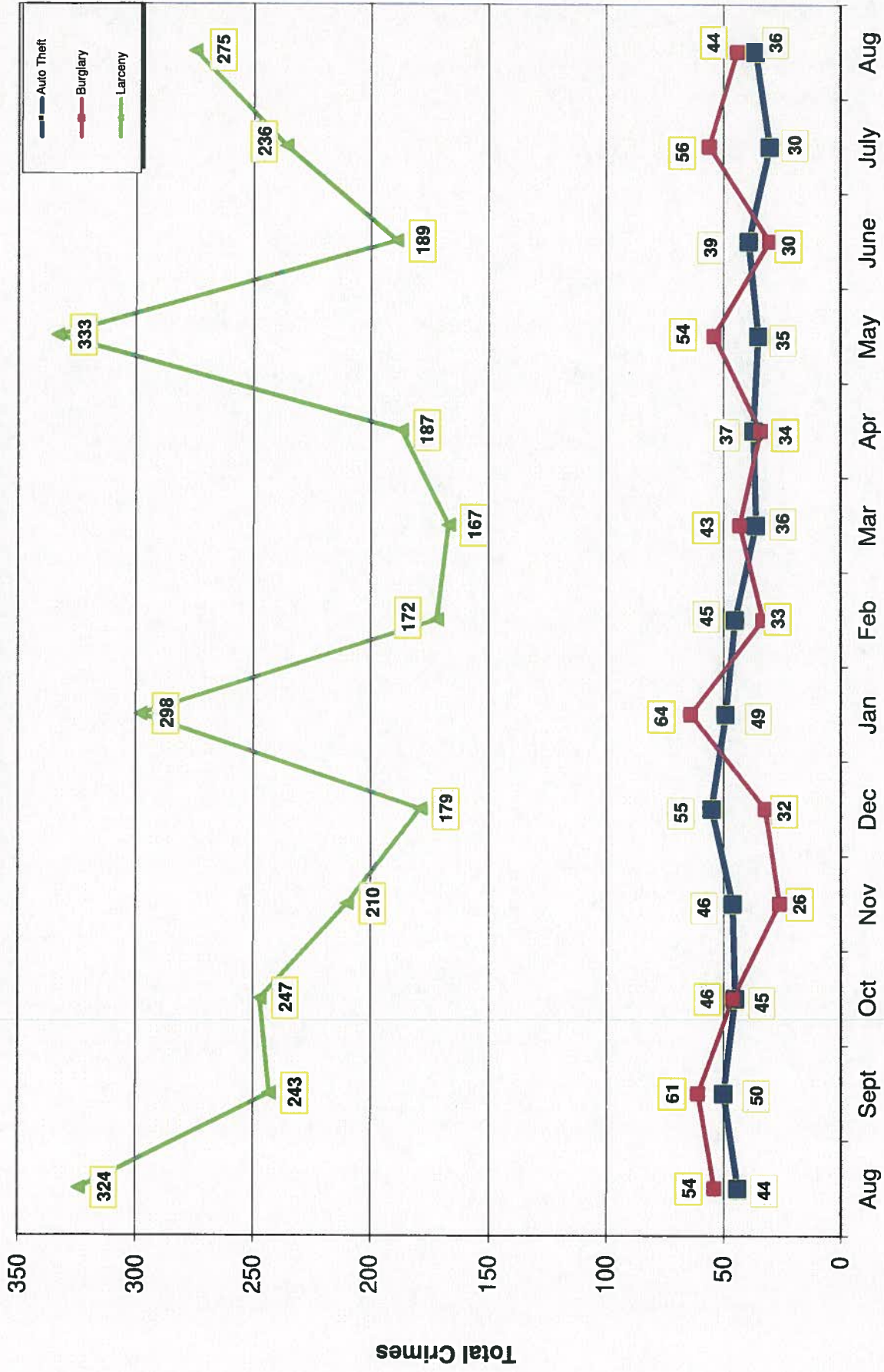
**OCEANSIDE POLICE DEPARTMENT
FBI INDEX CRIMES**

	MONTHLY CASE ACTIVITY 2018												YEAR TO DATE COMPARISON		% CHANGE	
	JAN	FEB	MAR	APR	MAY	JUN	JUL	AUG	SEP	OCT	NOV	DEC	2017	2018		CHANGE
1. HOMICIDE	1	0	0	2	0	0	1	1	1				8	5	-3	-37.5%
	1	0	0	1	0	0	1	0	0				5	3	-2	-40.0%
2. RAPE	5	3	2	8	11	4	7	3	3				48	43	-5	-10.4%
	3	1	1	1	0	0	0	0	0				15	6	-9	-60.0%
3. ROBBERY	11	10	16	10	17	8	9	18	18				113	99	-14	-12.4%
	3	1	3	4	4	2	1	6	6				40	24	-16	-40.0%
4. AGGR. ASSAULT	35	32	26	42	46	20	43	45	45				297	289	-8	-2.7%
	16	9	15	11	16	15	19	24	24				114	125	11	9.6%
5. BURGLARY	64	33	43	34	54	30	56	44	44				427	358	-69	-16.2%
	5	4	4	9	2	4	3	7	7				38	38	0	0.0%
6. LARCENY THEFT	298	172	167	187	333	189	236	275	275				2121	1857	-264	-12.4%
	27	16	15	13	15	8	24	23	23				164	141	-23	-14.0%
7. AUTO THEFT	49	45	36	37	35	39	30	36	36				300	307	7	2.3%
	2	2	2	2	1	6	3	2	2				22	20	-2	-9.1%
TOTAL INDEX CRIMES	463	295	290	320	496	290	385	422	422				3314	2961	-353	-10.7%
	57	33	40	41	38	35	51	62	62				398	357	-41	-10.3%
TOTAL PERSON CRIMES	52	45	44	62	74	32	60	67	67				466	436	-30	-6.4%
	23	11	19	17	20	17	21	30	30				174	158	-16	-9.2%
TOTAL PROPERTY CRIMES	411	250	246	258	422	258	322	355	355				2848	2522	-326	-11.4%
	34	22	21	24	18	18	30	32	32				224	199	-25	-11.2%
ARSON	2	1	0	3	3	2	0	2	2				21	13	-8	-38.1%
Y-T-D Loss \$77,917.00	1	0	0	0	0	0	0	1	1				2	2	0	0.0%

Part 1 Crimes by Month (Violent Crimes) 2018



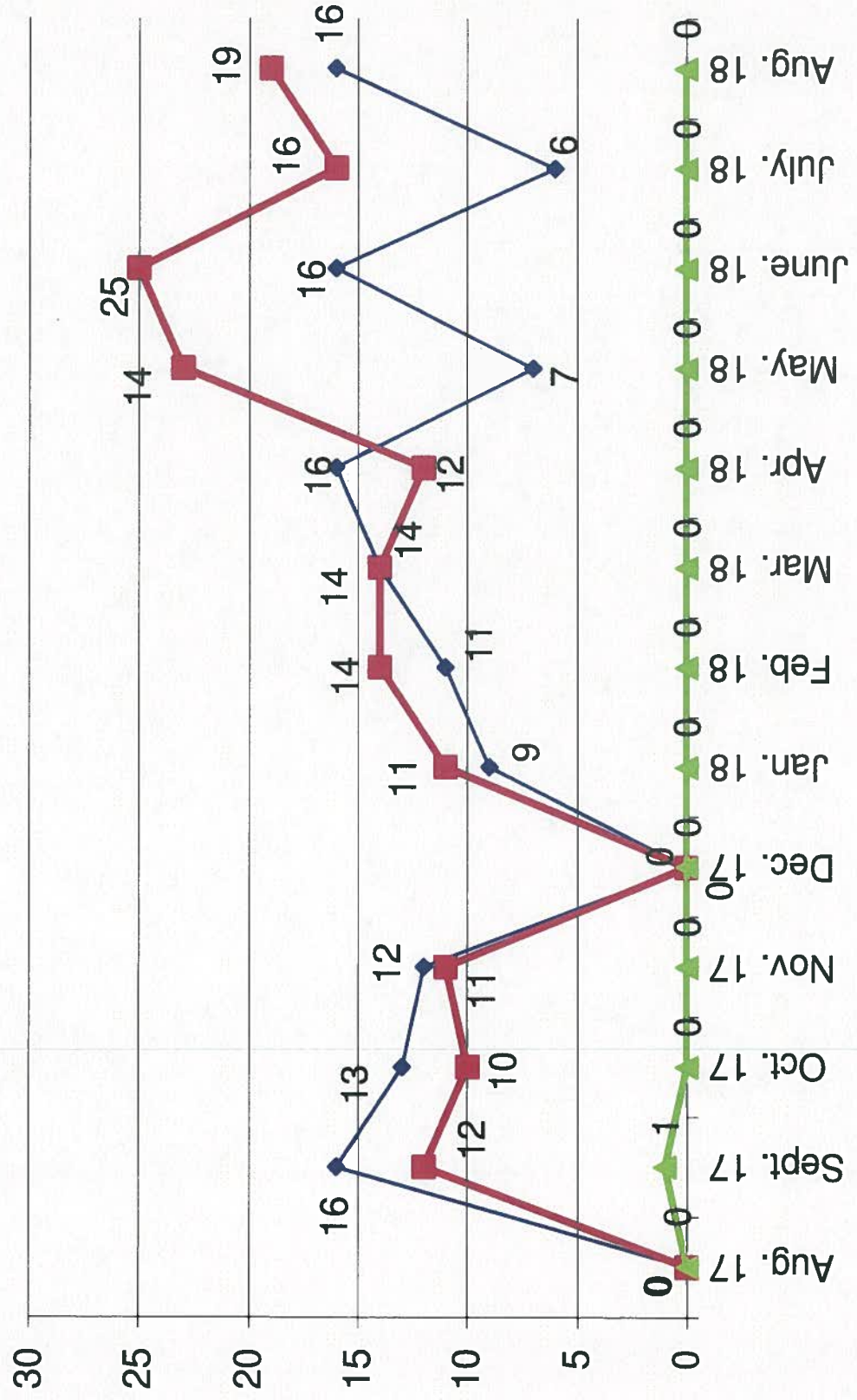
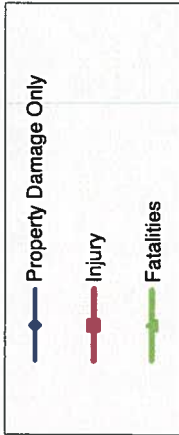
Part 1 Crimes by Month (Property Crimes) 2018



- 2018 -

- 2017 -

Traffic Collisions August 2017 - August 2018





UCR Crimes by GeoArea

Required Parameters
 Reporting Period: Aug 2018
 Agency: OCEANSIDE

Optional Parameters
 Geographical Area: All Beats
 Group by: Agency Select by: Neighborhood

Prior Report Number: S1STA120

Neighborhood	MURDER	RAPE	RAPE (HISTORICAL)	ROBBERY—	AGGRVD	VIOLENT	BURGLARY	RESID	NRESID	TOTAL	\$400+	<\$400	TOTAL	M.VEH	PROPERTY	CRIME	CAR
				ARMED	ASSAULT	CRM TL	RESID	TOTAL	TOTAL	TOTAL				THEFT	CRM TL	IDX TL	PROWL
				ST/ ARM													
Agency = OCEANSIDE																	
AIRPORT	0	0	0	0	0	2	0	0	0	0	4	3	7	1	8	10	1
EASTSIDE/CAPISTRANO	0	0	0	1	0	0	2	0	2	0	5	6	11	1	14	15	5
FIRE MOUNTAIN	0	0	0	0	2	5	0	4	4	19	15	34	2	40	47	8	8
GUAJOME	0	-1	0	1	0	6	1	0	1	6	7	13	1	15	21	5	5
IVY RAN/RAN DEL ORO	0	0	0	1	0	4	3	5	8	14	10	24	1	33	38	12	12
LAKE	0	1	1	0	0	0	1	1	2	2	3	5	2	9	10	1	1
MIRA COSTA	0	1	0	0	2	3	1	0	1	10	10	20	1	22	25	14	14
MISSN MESA/LOMA ALTA	0	0	0	1	1	3	4	1	5	2	13	15	5	25	30	7	7
MORRO HILLS	1	0	0	1	0	1	0	0	0	0	0	0	0	1	1	4	0
NORTH VALLEY	0	0	0	0	2	3	1	0	1	4	8	12	4	17	22	7	7
OCEAN HILLS	0	0	0	0	0	0	1	0	1	4	4	8	0	9	9	4	4
OCEANA	0	0	0	0	0	1	0	0	0	2	2	4	2	6	7	3	3
SAN LUIS REY	0	1	1	2	0	4	7	6	4	10	11	23	34	3	47	54	15
SOUTH OCEANSIDE	0	0	0	1	1	1	3	2	0	2	8	10	18	5	25	28	4
TOWNSITE	0	0	0	2	2	12	3	3	6	26	29	55	7	68	84	21	21
TRI CITY	0	1	1	0	0	2	3	1	0	7	7	14	0	15	18	2	2
UNKNOWN	0	0	0	0	0	-1	0	0	0	1	0	0	1	0	0	1	1
SUB-TOTAL	1	3	2	9	9	45	67	25	18	44	125	150	275	36	355	422	110
GRAND TOTALS	1	3	2	9	9	45	67	26	18	44	125	150	275	36	355	422	110



UCR Crimes by GeoArea

Required Parameters
 Reporting Period: Jan 2018 to Aug 2018
 Agency: OCEANSIDE

Optional Parameters
 Geographical Area: All Beats
 Group by: Agency Select by: Neighborhood

Prior Report Number: S1STA120

Neighborhood	MURDER	RAPE	RAPE (HISTORICAL)	ROBBERY—	ARMED	ST7 ARM	ASSAULT	CRIM TL	RESID	NRESID	TOTAL	\$400+	<\$400	TOTAL	THEFT	CRM TL	IDX TL	CRIME	CAR	
				ROBBERY—	ARMED	ST7 ARM	ASSAULT	CRIM TL	RESID	NRESID	TOTAL	\$400+	<\$400	TOTAL	THEFT	CRM TL	IDX TL	CRIME	CAR	
				ROBBERY—	ARMED	ST7 ARM	ASSAULT	CRIM TL	RESID	NRESID	TOTAL	\$400+	<\$400	TOTAL	THEFT	CRM TL	IDX TL	CRIME	CAR	
Agency = OCEANSIDE																				
AIRPORT	0	0	0	0	0	2	4	6	3	1	4	19	31	50	11	65	71	26		
EASTSIDE/CAPISTRANO	1	1	1	1	5	4	29	40	10	5	15	27	44	71	15	101	141	33		
FIRE MOUNTAIN	0	1	1	1	3	7	15	26	3	23	26	77	107	184	14	224	250	65		
GUAJOME	0	0	0	0	1	2	10	13	7	4	11	34	51	85	6	102	115	48		
IVY RAN/RAN DEL ORO	0	3	2	2	3	5	23	34	21	31	52	91	143	234	39	325	359	143		
LAKE	0	3	3	3	4	2	6	15	1	2	3	21	59	80	15	98	113	20		
MIRA COSTA	0	4	4	3	1	0	14	19	14	13	27	41	56	97	31	155	174	62		
MISSN MESA/LOMA ALTA	0	4	4	3	1	6	28	39	19	9	28	33	117	150	21	199	238	66		
MORRO HILLS	1	0	0	0	2	0	7	10	3	3	6	6	13	19	7	32	42	11		
NORTH VALLEY	0	1	1	1	1	4	17	23	19	11	30	23	45	68	29	127	150	49		
OCEAN HILLS	0	1	1	1	0	0	2	3	8	0	8	17	20	37	0	45	48	30		
OCEANA	0	1	1	1	1	0	8	10	3	4	7	16	18	34	3	44	54	20		
SAN LUIS REY	1	6	5	5	5	7	20	39	33	21	54	71	163	234	36	324	363	121		
SOUTH OCEANSIDE	0	2	2	2	3	2	13	20	14	10	24	28	80	108	17	149	169	42		
TOWNSITE	1	11	8	8	10	17	78	117	28	22	50	130	202	332	52	434	551	127		
TRI CITY	1	5	4	4	1	0	14	21	8	5	13	27	45	72	9	94	115	22		
UNKNOWN	0	0	0	0	0	0	1	1	0	0	0	2	0	2	2	4	5	2		
SUB-TOTAL	5	43	35	41	58	289	289	436	194	164	358	663	1,194	1,857	307	2,522	2,958	887		
GRAND TOTALS	5	43	35	41	58	289	289	436	194	164	358	663	1,194	1,857	307	2,522	2,958	887		