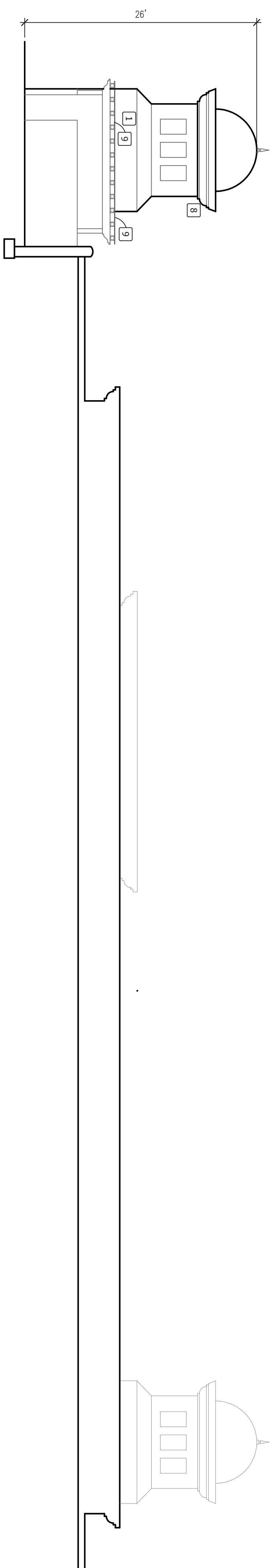


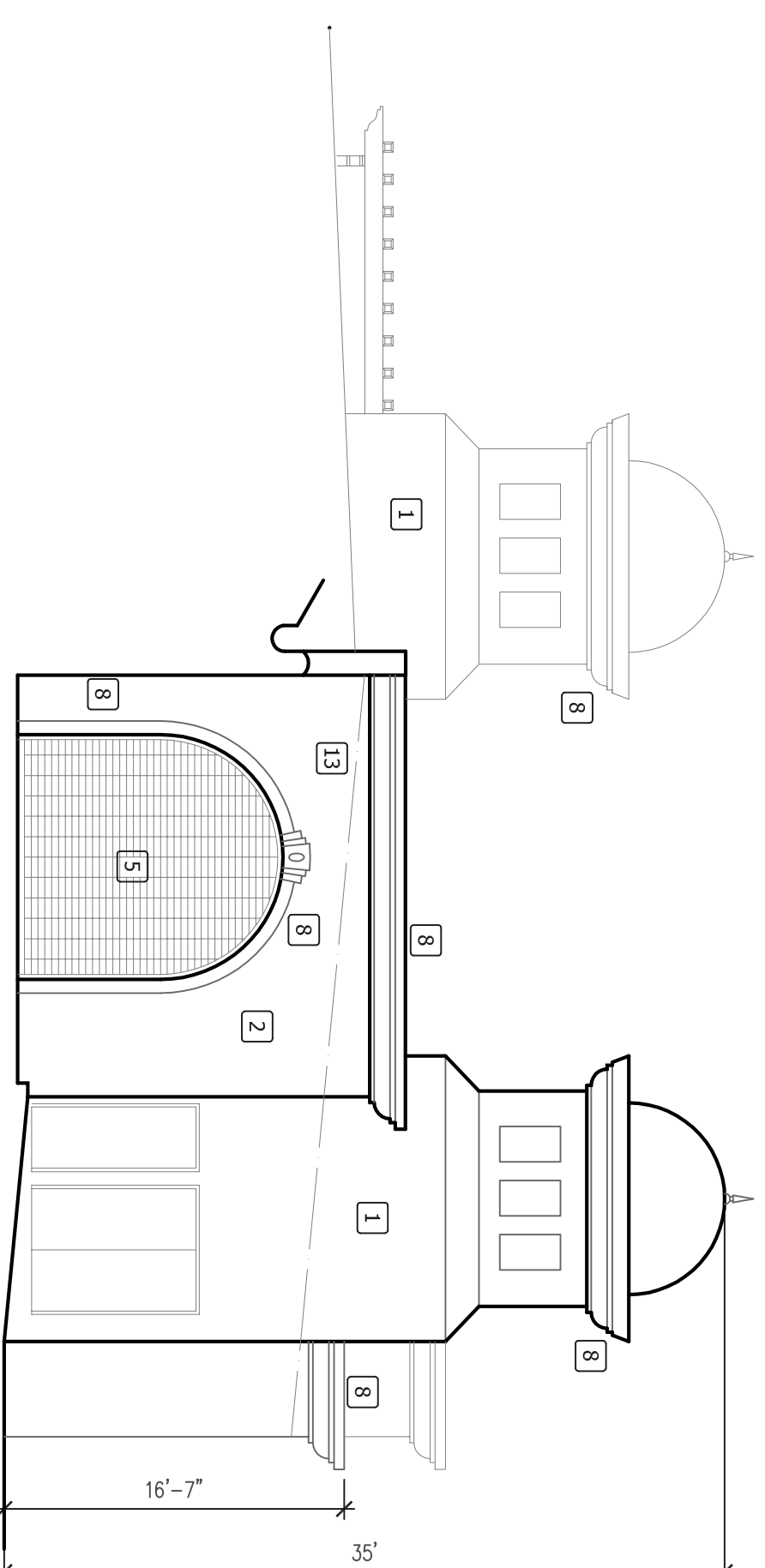
**ELEVATION NOTES**

- 1 EXTERIOR GROUT PASTER, SMOOTH FINISH
- 2 PAINTED TANKON SHERWIN WILLIAMS
- 3 EXTERIOR GROUT PASTER, SMOOTH FINISH
- 4 PAINTED ORGANIZ. BY SHERWIN WILLIAMS
- 5 CLEAR TEMPERED GLASS WITH NON-REFLECTIVE FINISH.
- 6 ALUMINUM STORMDOOR FACTORY FINISH PAINTED ULSH VENEER\* BY COOLBURG.
- 7 ALUMINUM ROLL UP GRILL W/ 4 RUBBER SKIRT @ BOTTOM OF GRILL.
- 8 SOLID SECTIONAL MOLD UP ALUMINUM DOOR.
- 9 G/L SHEET METAL CUTTER & DOWNSPOUT.
- 10 STUCCO MOLDING TRIM
- 11 1" THICK FLEX-GLASS
- 12 CERAMIC INSERT.
- 13 N/A
- 14 FINISH FLOOR OF TUNNEL BEYOND.
- 15 TOP OF ROOF BEYOND.
- 16 ILLUMINATED SIGN LOCATION BY OTHER.



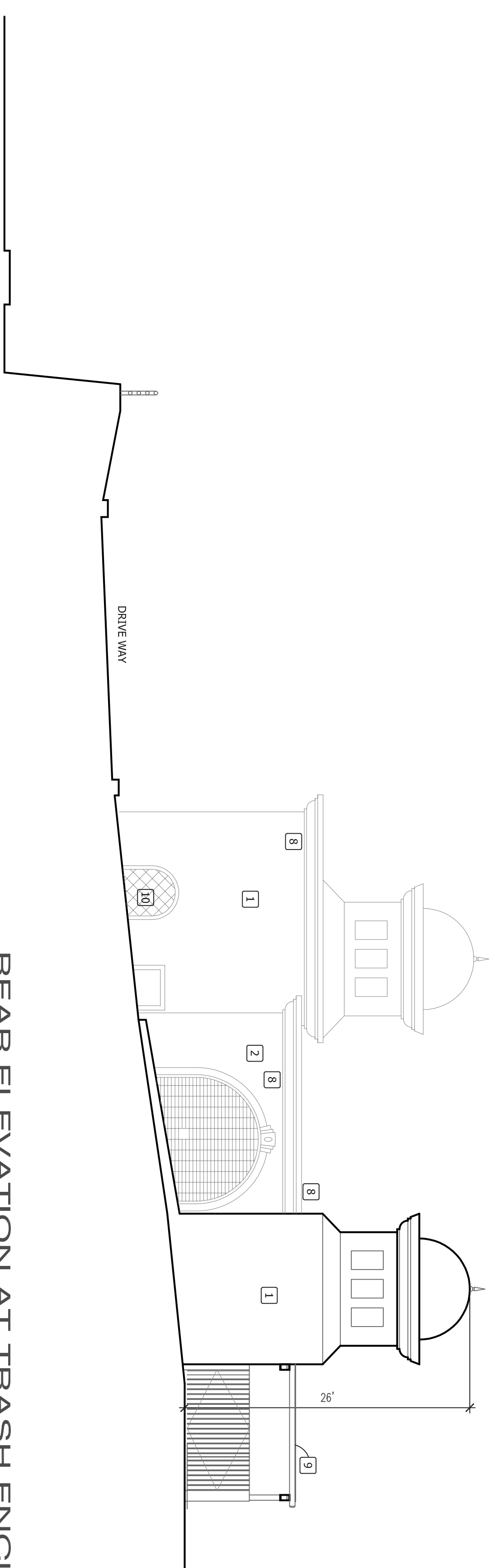
LEFT SIDE ELEVATION

1/8" = 1'-0"



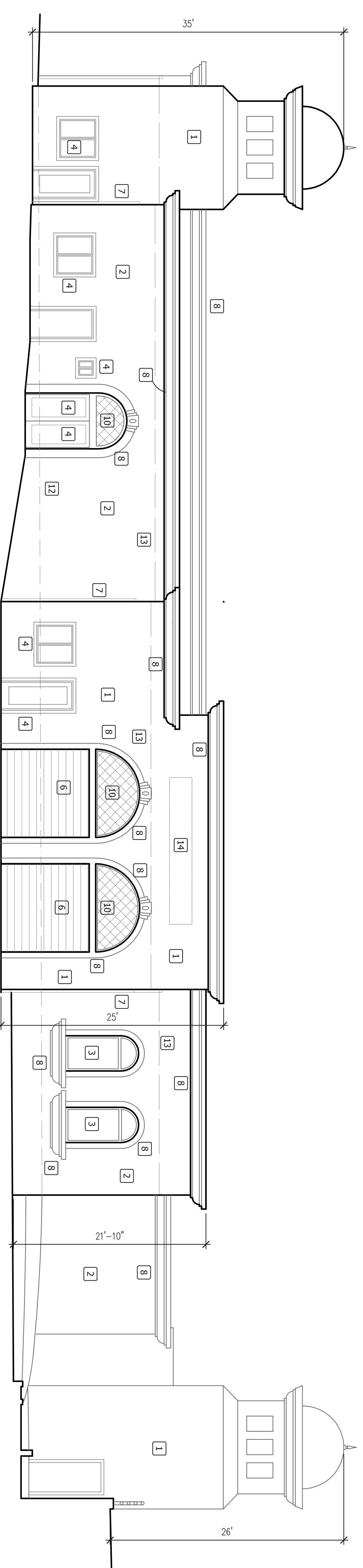
FRONT ELEVATION  
EL CAMINO REAL

1/8" = 1'-0"



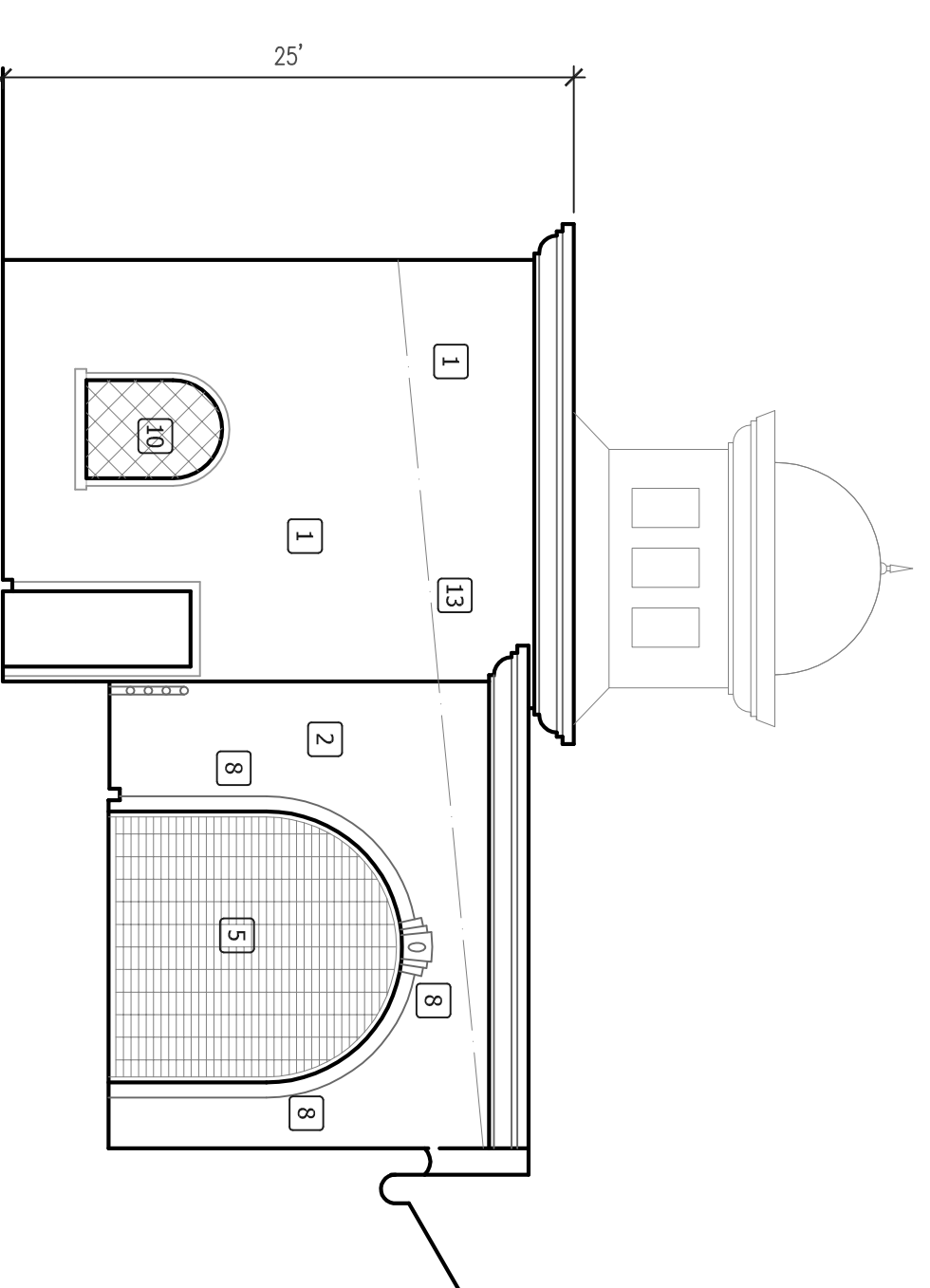
REAR ELEVATION AT TRASH ENCLOSURE

1/8" = 1'-0"



RIGHT SIDE ELEVATION (STREET)  
VIA LAS ROSAS

1/8" = 1'-0"



REAR ELEVATION

1/8" = 1'-0"

SHEET TITLE ELEVATIONS

JOB NO :	JOB	REVISIONS
DATE :	MAY-4-2018	
DRAWN :	DD	

**DONG DAO ARCHITECT**

4433 CONVOY STREET, SUITE# F SAN DIEGO CALIFORNIA 92111 PHONE: (658) 279 4046

**DOLPHIN GREEN  
CAR WASH**  
2190 El Camino Real  
Oceanside, California

SHEET NO

**A3**