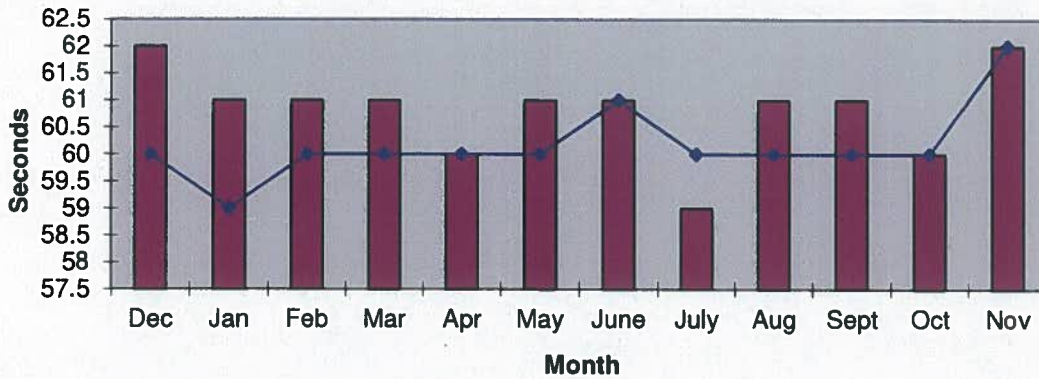
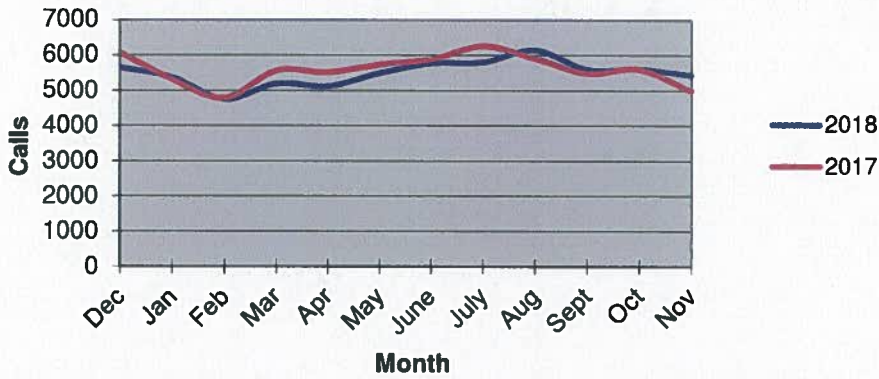


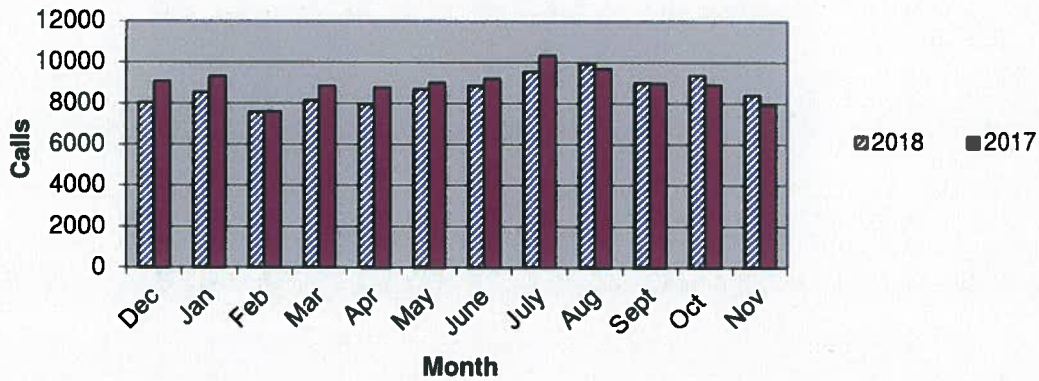
Priority 1 Dispatch Times- Police



911 Calls



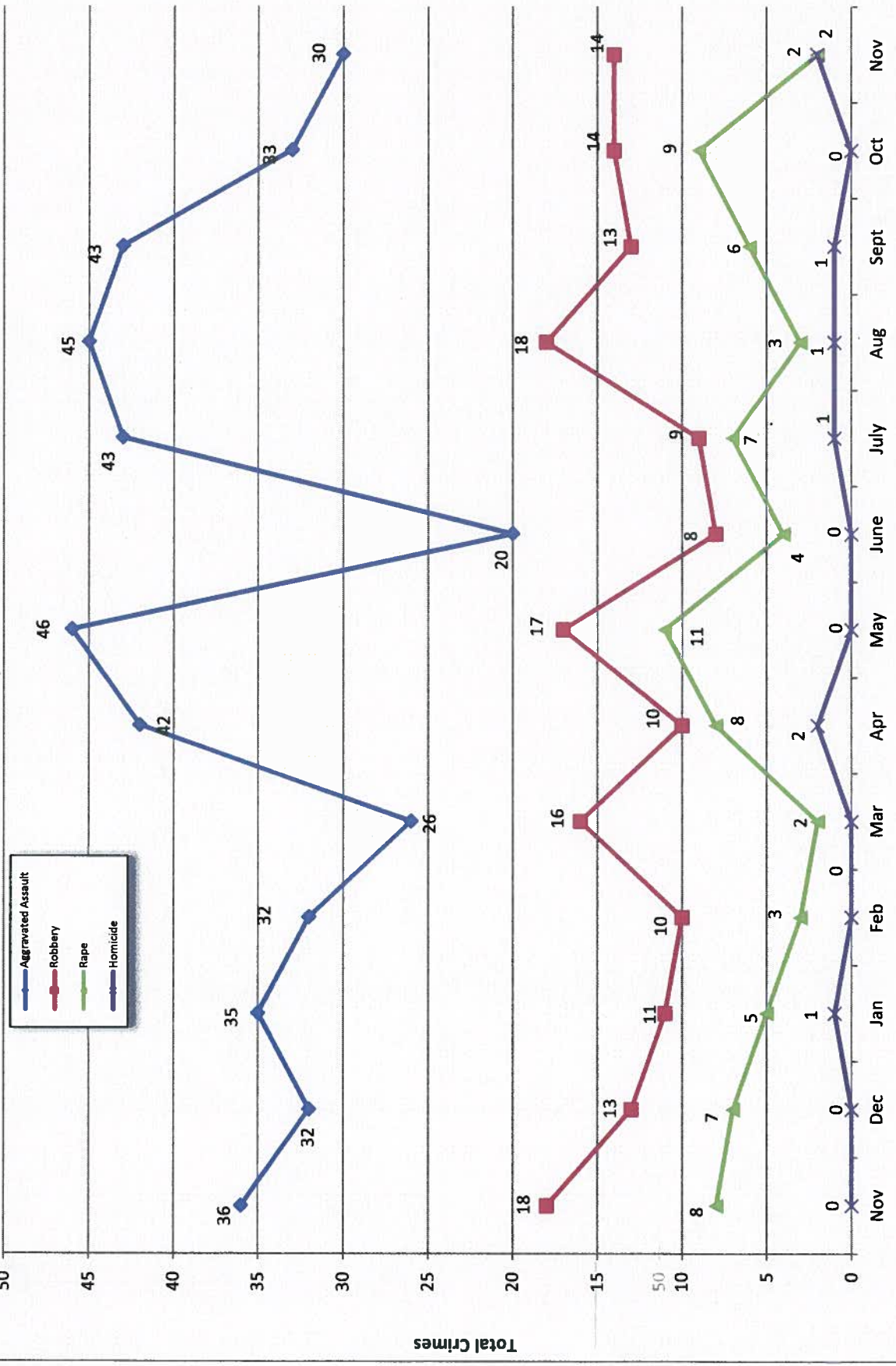
Calls for Service



**OCEANSIDE POLICE DEPARTMENT
FBI INDEX CRIMES**

		MONTHLY CASE ACTIVITY 2018												YEAR TO DATE COMPARISON		% CHANGE	
		JAN	FEB	MAR	APR	MAY	JUN	JUL	AUG	SEP	OCT	NOV	DEC	2017	2018		CHANGE
1. HOMICIDE	Actual	1	0	0	2	0	0	1	1	1	0	2	2	9	8	-1	-11.1%
	Cleared	1	0	0	1	0	0	1	0	1	1	2	2	6	7	1	16.7%
2. RAPE	Actual	5	3	2	8	11	4	7	3	6	9	2	2	62	60	-2	-3.2%
	Cleared	3	1	1	1	0	0	0	0	1	0	0	0	18	7	-11	-61.1%
3. ROBBERY	Actual	11	10	16	10	17	8	9	18	13	14	14	14	152	140	-12	-7.9%
	Cleared	3	1	3	4	4	2	1	6	5	3	5	5	53	37	-16	-30.2%
4. AGGR. ASSAULT	Actual	35	32	26	42	46	20	43	45	43	33	30	30	418	395	-23	-5.5%
	Cleared	16	9	15	11	16	15	19	24	14	16	13	13	165	168	3	1.8%
5. BURGLARY	Actual	64	33	43	34	54	30	56	44	36	43	41	41	560	478	-82	-14.6%
	Cleared	5	4	4	9	2	4	3	7	4	5	0	0	50	47	-3	-6.0%
6. LARCENY THEFT	Actual	298	172	167	187	333	189	236	275	232	270	209	209	2821	2568	-253	-9.0%
	Cleared	27	16	15	13	15	8	24	23	9	18	12	12	207	180	-27	-13.0%
7. AUTO THEFT	Actual	49	45	36	37	35	39	30	36	48	52	27	27	441	434	-7	-1.6%
	Cleared	2	2	2	2	1	6	3	2	5	5	1	1	30	31	1	3.3%
TOTAL INDEX CRIMES	Actual	463	295	290	320	496	290	385	422	379	421	325	325	4463	4086	-377	-8.4%
	Cleared	57	33	40	41	38	35	51	62	39	48	33	33	529	477	-52	-9.8%
TOTAL PERSON CRIMES	Actual	52	45	44	62	74	32	60	67	63	56	48	48	641	603	-38	-5.9%
HOMICIDE	Cleared	23	11	19	17	20	17	21	30	21	20	20	20	242	219	-23	-9.5%
TOTAL PROPERTY CRIMES	Actual	411	250	246	258	422	258	322	355	316	365	277	277	3822	3480	-342	-8.9%
2. RAPE	Cleared	34	22	21	24	18	18	30	32	18	28	13	13	287	258	-29	-10.1%
ARSON	Actual	2	1	0	3	3	2	0	2	1	0	0	0	21	14	-7	-33.3%
Y-T-D Loss \$177,917.00	Cleared	1	0	0	0	0	0	0	1	1	0	0	0	2	3	1	50.0%

Part 1 Crimes by Month (Violent Crimes) 2018

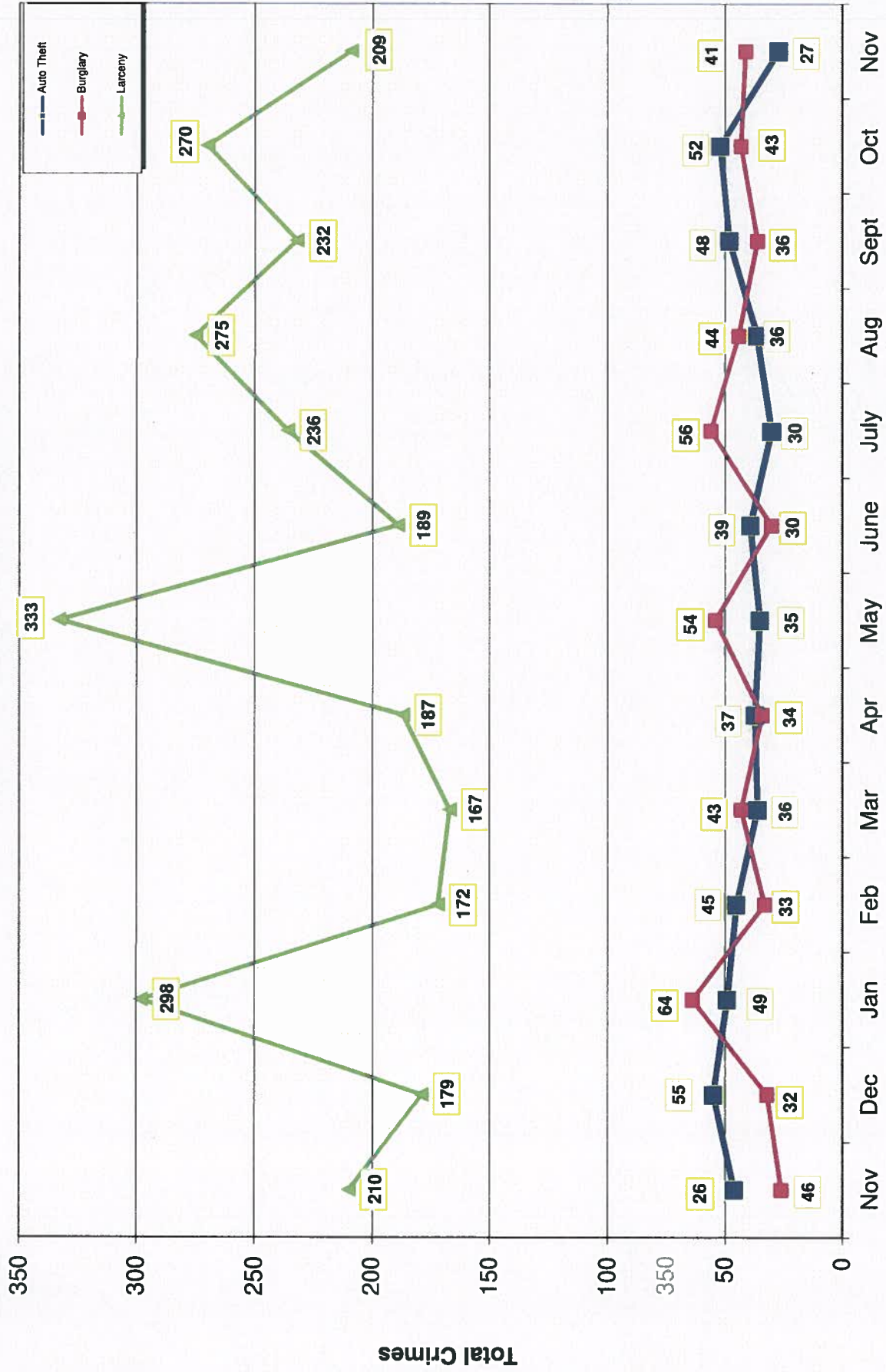


- 2018 -

Month

- 2017 -

Part 1 Crimes by Month (Property Crimes) 2018

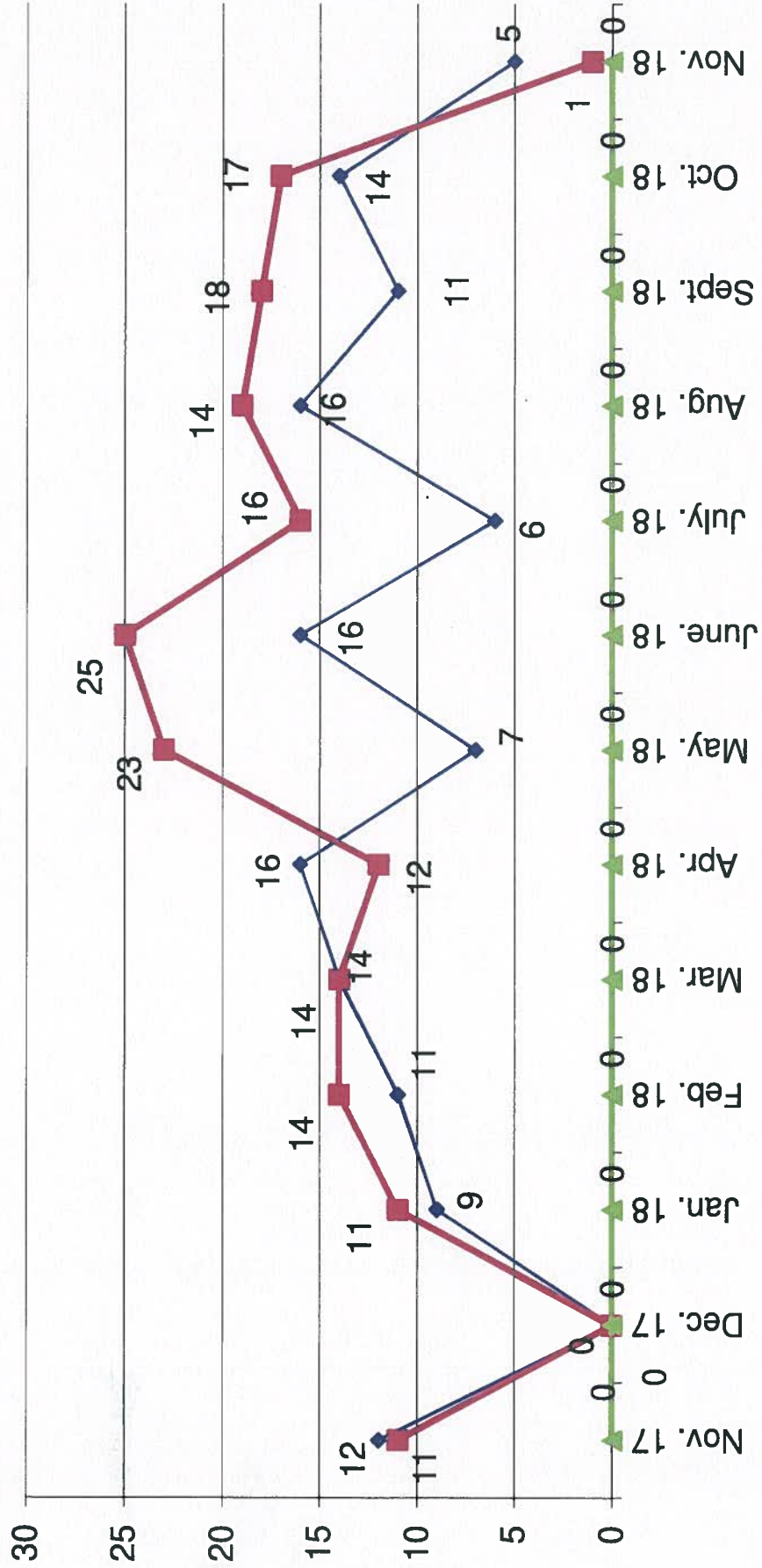


Month

- 2017 -

- 2018 -

Traffic Collisions November 2017 - November 2018





UCR Crimes by GeoArea

Required Parameters
 Reporting Period: Nov 2018
 Agency: OCEANSIDE

Optional Parameters
 Geographical Area: All Beats
 Group by: Agency Select by: Neighborhood

Prior Report Number: S1STA120

Neighborhood	MURDER	RAPE (HISTORICAL)	RAPE (HISTORICAL)	ROBBERY—	ARMED	ST/ ARM	ASSAULT	CRIM TL	VIOLENT	AGGRVD	—	BURGLARY—	TOTAL	\$400+	<\$400	TOTAL	THEFT	M.VEH	PROPERTY	CRIME	CAR	PROWL	
Agency = OCEANSIDE																							
AIRPORT	0	0	0	0	0	0	1	1	0	2	2	2	2	3	5	0	0	7	8	3			
EASTSIDE/CAPISTRANO	0	0	0	0	0	0	1	1	2	0	2	0	2	6	3	9	3	14	15	4			
FIRE MOUNTAIN	0	0	0	1	2	1	4	0	1	17	11	28	3	32	36	10							
GUAJOME	0	0	0	0	0	0	1	0	0	4	6	10	0	10	11	7							
IVY RAN/RAN DEL ORO	0	1	0	1	1	4	7	5	4	9	7	22	29	1	39	46	17						
LAKE	0	0	0	0	2	1	3	0	0	4	8	12	2	14	17	2							
MIRA COSTA	1	0	0	0	1	2	4	2	0	3	5	8	2	12	16	4							
MISSN MESA/LOMA ALTA	0	0	0	0	1	4	5	1	0	1	5	10	15	0	16	21	5						
MORRO HILLS	0	0	0	0	0	0	0	0	0	1	3	4	1	5	2								
NORTH VALLEY	1	0	0	0	0	1	2	4	0	4	1	3	4	1	9	11	0						
OCEAN HILLS	0	1	1	1	0	1	3	1	0	1	2	3	0	4	7	1							
OCEANA	0	0	0	0	0	0	0	1	1	2	0	0	0	2	2	0							
SAN LUIS REY	0	1	1	-1	1	4	5	3	4	7	8	15	23	5	35	40	10						
SOUTH OCEANSIDE	0	0	0	0	0	1	1	0	1	4	6	10	2	13	14	2							
TOWNSITE	0	-1	1	0	3	6	8	5	4	9	15	26	41	6	56	64	14						
TRI CITY	0	0	0	0	1	3	4	0	0	6	2	8	1	9	13	4							
UNKNOWN	0	0	0	0	0	-1	-1	0	0	0	0	0	0	0	-1	0							
SUB-TOTAL	2	2	1	2	12	30	48	25	16	41	84	125	209	27	277	325	85						
GRAND TOTALS	2	2	1	2	12	30	48	25	16	41	84	125	209	27	277	325	85						



UCR Crimes by GeoArea

Required Parameters
Reporting Period: Jan 2018 to Nov 2018
Agency: OCEANSIDE

Optional Parameters
Geographical Area: All Beats
Group by: Agency Select by: Neighborhood

Prior Report Number: S1STA120

Neighborhood	MURDER	RAPE (HISTORICAL)	RAPE	ROBBERY--	AGGRVD	VIOLENT	BURGLARY	RESID	NRESID	TOTAL	\$400+	LARCENY-THEFT	M.VEH	PROPERTY	CRIME	CAR	
				ARMED	ST/ARM	ASSAULT	CRM TL	RESID	NRESID	TOTAL	\$400+	LARCENY-THEFT	THEFT	CRM TL	IDX TL	PROWL	
Agency = OCEANSIDE																	
AIRPORT	0	0	0	0	1	3	7	4	4	8	27	39	66	17	91	102	33
EASTSIDE/CAPISTRANO	1	3	3	4	3	3	35	17	6	23	40	65	105	25	153	199	50
FIRE MOUNTAIN	0	1	1	5	10	20	20	6	30	36	118	149	267	24	327	363	87
GUAJOME	0	0	0	2	3	11	16	8	5	13	49	78	127	10	150	166	69
IVY RAN/RAN DEL ORO	0	8	3	4	6	34	52	35	39	74	113	193	306	52	432	484	187
LAKE	0	3	3	5	7	12	27	4	2	6	32	92	124	25	155	182	31
MIRA COSTA	1	5	4	2	2	15	25	20	14	34	54	76	130	40	204	223	85
MISSN MESALOMA ALTA	0	4	3	1	9	37	51	20	10	30	50	161	211	24	285	316	90
MORRO HILLS	1	0	0	2	0	9	12	3	4	7	8	16	24	9	40	52	14
NORTH VALLEY	1	3	3	1	4	25	34	28	11	39	30	58	88	34	161	195	59
OCEAN HILLS	0	2	2	1	0	3	6	11	0	11	20	25	45	1	57	63	33
OCEANA	0	1	1	1	0	8	10	4	5	9	21	26	47	5	61	71	28
SAN LUIS REY	1	9	8	6	9	36	61	38	27	65	102	224	326	52	443	504	162
SOUTH OCEANSIDE	0	2	2	3	3	19	27	20	11	31	39	110	149	28	208	235	63
TOWNSITE	2	13	9	11	27	99	152	42	33	75	183	268	451	71	597	749	199
TRI CITY	1	6	5	3	2	22	34	11	6	17	40	60	100	15	132	166	35
UNKNOWN	0	0	0	0	0	3	3	0	0	0	2	0	2	2	4	7	2
SUB-TOTAL	8	60	47	52	88	395	603	271	207	478	928	1,640	2,568	434	3,480	4,083	1,197
GRAND TOTALS	8	60	47	52	88	395	603	271	207	478	928	1,640	2,568	434	3,480	4,083	1,197

Neighborhood

Agency = OCEANSIDE
AIRPORT