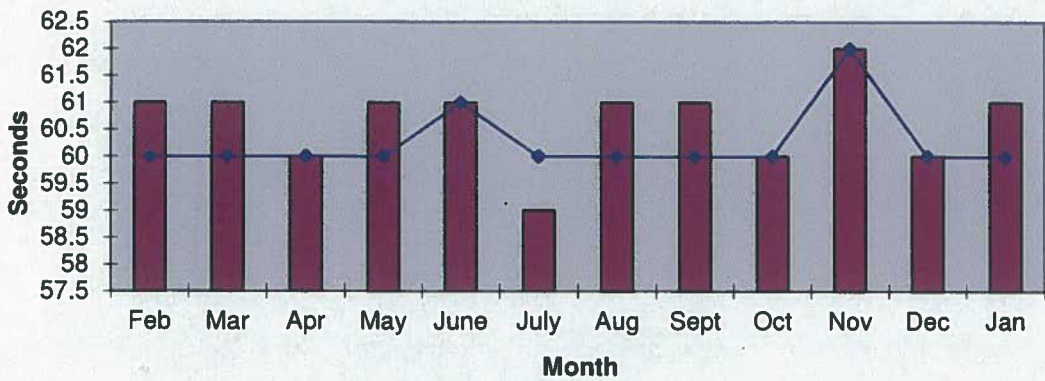
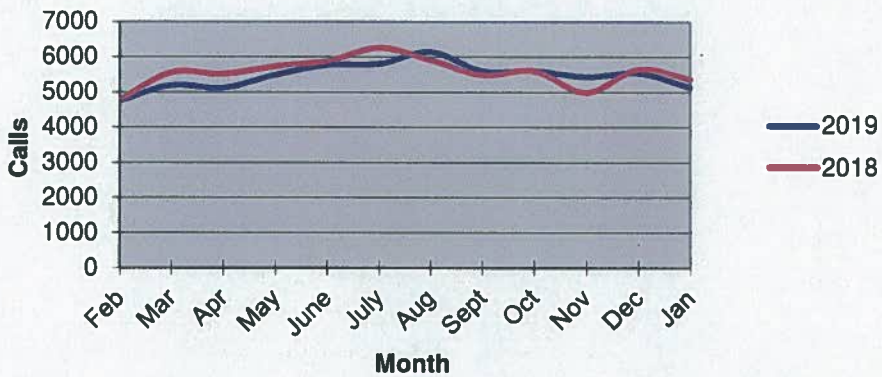


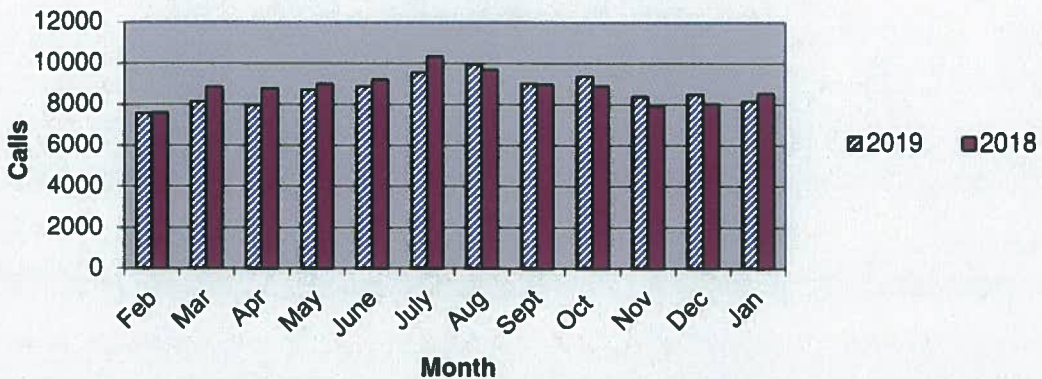
Priority 1 Dispatch Times- Police



911 Calls



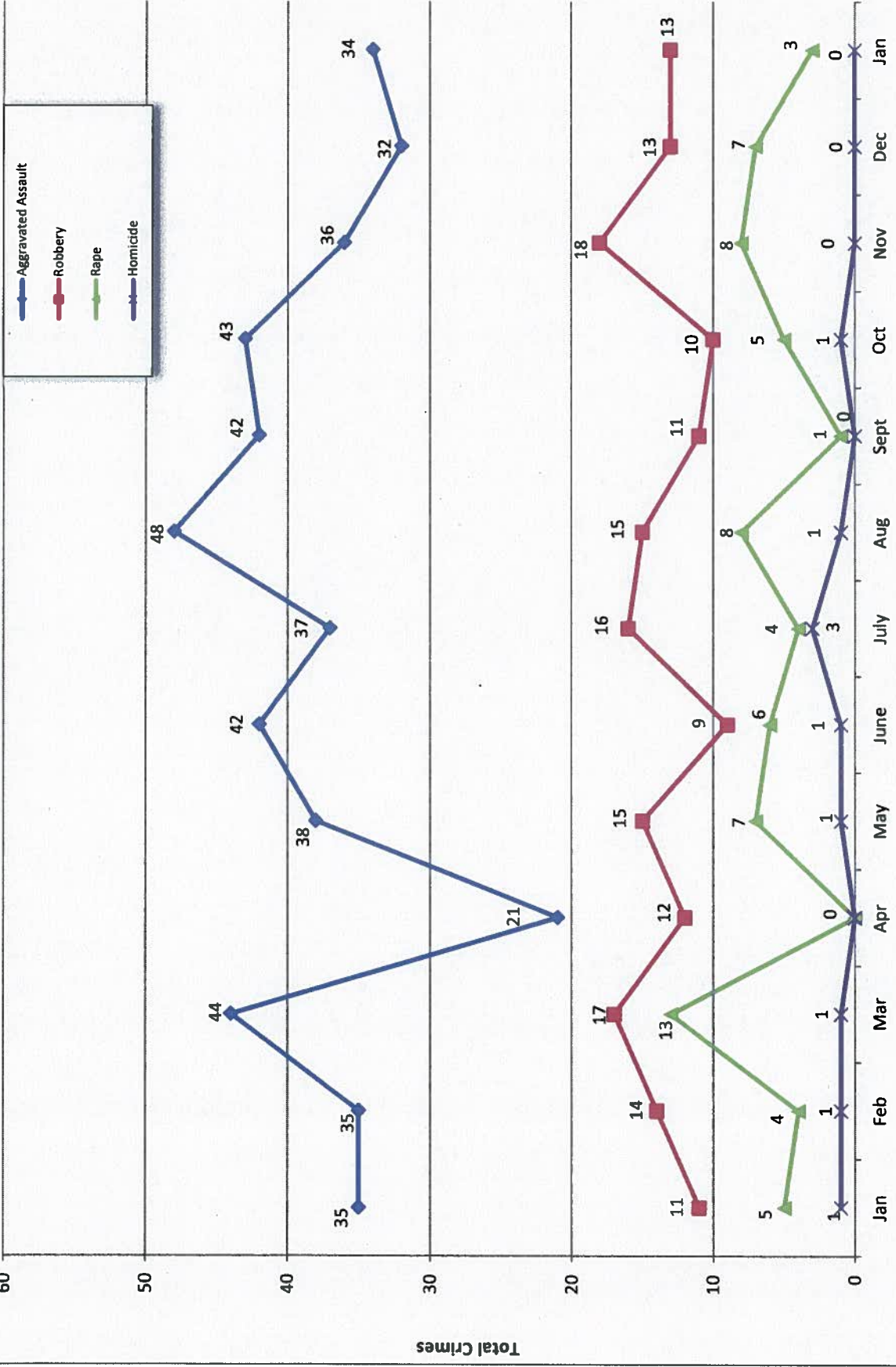
Calls for Service



**OCEANSIDE POLICE DEPARTMENT
FBI INDEX CRIMES**

	MONTHLY CASE ACTIVITY 2019												YEAR TO DATE COMPARISON		% CHANGE	
	JAN	FEB	MAR	APR	MAY	JUN	JUL	AUG	SEP	OCT	NOV	DEC	2018	2019		
	Actual	Cleared	Actual	Cleared	Actual	Cleared	Actual	Cleared	Actual	Cleared	Actual	Cleared				
1. HOMICIDE	0	0											1	0	-1	-100.0%
	0	0											1	0	-1	-100.0%
2. RAPE	3	0											5	3	-2	-40.0%
	0	0											3	0	-3	-100.0%
3. ROBBERY	13	2											11	13	2	18.2%
	2	2											3	2	-1	-33.3%
4. AGGR. ASSAULT	34	16											35	34	-1	-2.9%
	16	16											16	16	0	0.0%
5. BURGLARY	30	3											64	30	-34	-53.1%
	3	3											5	3	-2	-40.0%
6. LARCENY THEFT	159	19											298	159	-139	-46.6%
	19	19											27	19	-8	-29.6%
7. AUTO THEFT	24	2											49	24	-25	-51.0%
	2	2											2	2	0	0.0%
TOTAL INDEX CRIMES	263	42											463	263	-200	-43.2%
	42	42											57	42	-15	-26.3%
TOTAL PERSON CRIMES	50	18											52	50	-2	-3.8%
	18	18											23	18	-5	-21.7%
TOTAL PROPERTY CRIMES	213	24											411	213	-198	-48.2%
	24	24											34	24	-10	-29.4%
ARSON	1	1											2	1	-1	-50.0%
Y-T-D Loss \$0.00	0	0											1	0	-1	-100.0%

Part 1 Crimes by Month (Violent Crimes) 2019

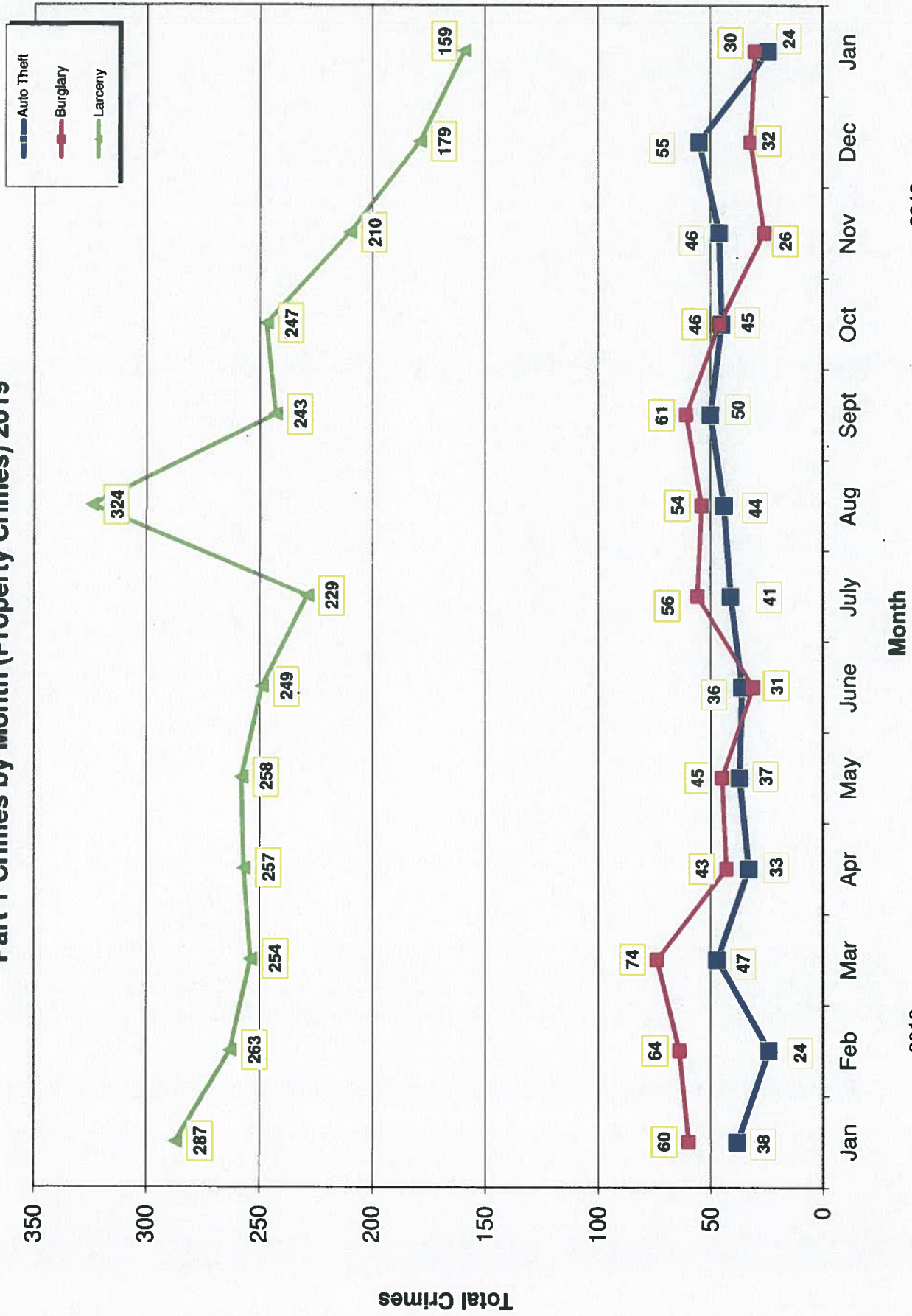


- 2019 -

Month

- 2018 -

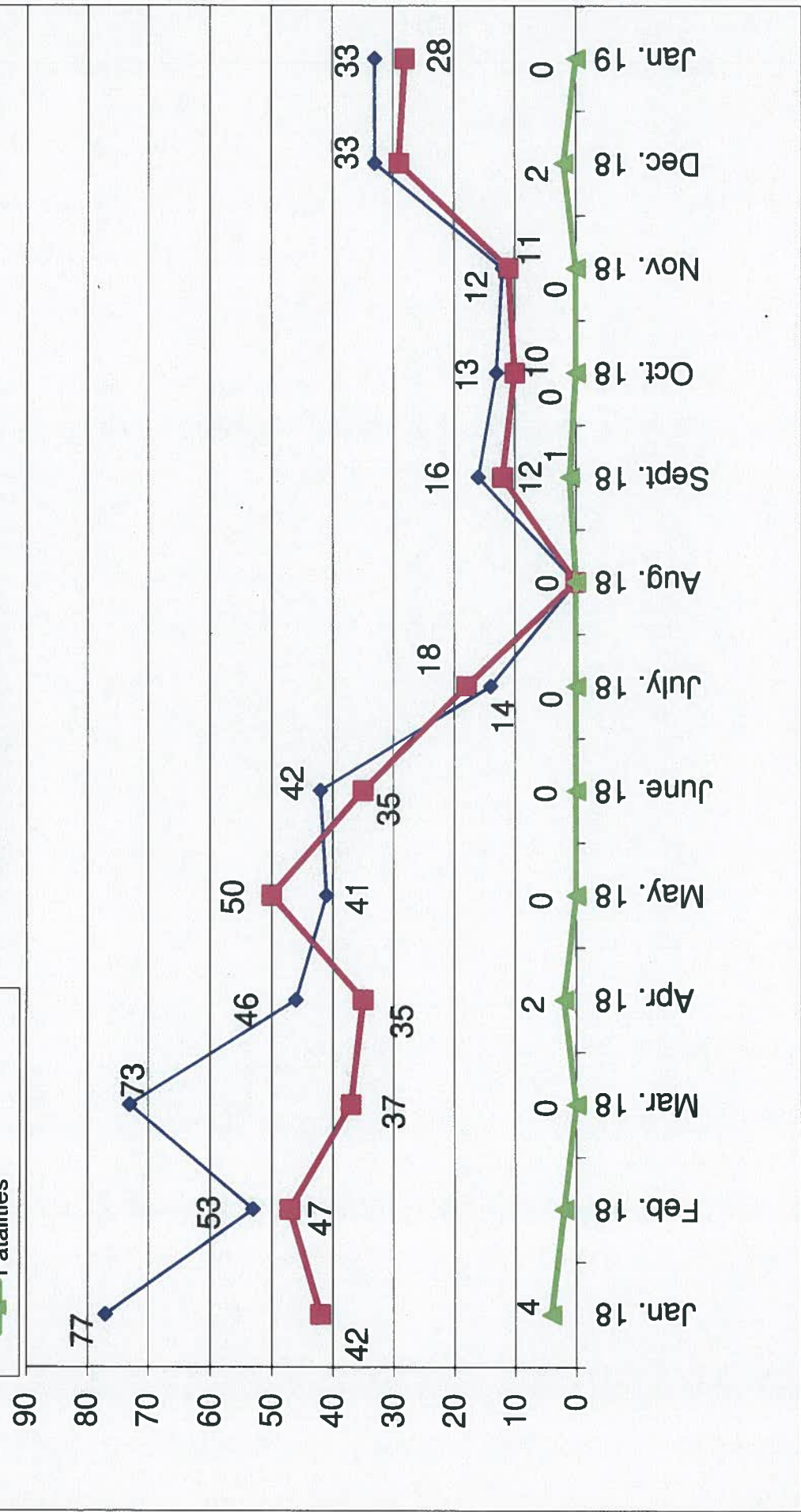
Part 1 Crimes by Month (Property Crimes) 2019



- 2018 -

- 2019 -

Traffic Collisions January 2018 - January 2019





UCR Crimes by GeoArea

Required Parameters
 Reporting Period: Jan 2019
 Agency: OCEANSIDE

Optional Parameters
 Geographical Area: All Beats
 Group by: Agency Select by: Neighborhood

Prior Report Number: S1STA120

Neighborhood	MURDER	RAPE	RAPE (HISTORICAL)	ROBBERY—	AGGRVD	VIOLENT	BURGLARY—	TOTAL	\$400+	<\$400	TOTAL	THEFT	M.VEH	PROPERTY	CRIME	CAR
			ARMED	ST/ARM	ASSAULT	CRM TL	NRESID	TOTAL						CRM TL	IDX TL	PROWL
Agency = OCEANSIDE																
AIRPORT	0	1	0	1	0	2	0	1	1	1	2	3	0	4	6	1
EASTSIDE/CAPISTRANO	0	0	0	1	5	6	0	1	1	1	3	4	1	6	12	1
FIRE MOUNTAIN	0	0	0	0	0	0	1	0	1	13	10	23	2	26	26	7
GUAJOME	0	0	0	0	0	0	1	1	2	2	4	6	0	8	8	2
IVY RANIRAN DEL ORO	0	0	2	0	2	4	1	6	7	10	10	20	5	32	36	10
LAKE	0	0	1	0	1	2	1	0	1	1	12	13	1	15	17	1
MIRA COSTA	0	0	0	0	1	1	0	2	2	4	3	7	1	10	11	5
MISSN MESALOMA ALTA	0	0	1	1	4	6	1	0	1	2	7	9	1	11	17	3
MORRO HILLS	0	0	0	0	0	0	0	0	0	0	4	4	2	6	6	2
NORTH VALLEY	0	0	0	0	4	4	0	0	4	1	1	5	0	5	9	1
OCEAN HILLS	0	0	0	0	2	2	0	0	1	1	2	2	1	3	5	0
OCEANA	0	0	0	0	0	0	0	0	0	0	2	2	0	2	2	2
SAN LUIS REY	0	2	1	0	1	4	3	0	3	4	12	16	3	22	26	4
SOUTH OCEANSIDE	0	0	0	0	3	3	1	1	2	3	6	9	2	13	16	3
TOWNSITE	0	0	2	2	12	16	5	3	8	15	16	31	4	43	59	11
TRI CITY	0	0	1	0	-1	0	1	0	1	2	3	5	1	7	7	5
UNKNOWN	0	0	0	0	0	0	0	0	0	0	0	0	0	0	0	0
SUB-TOTAL	0	3	8	5	34	50	15	30	63	96	159	24	24	213	263	58
GRAND TOTALS	0	3	8	5	34	50	15	30	63	96	159	24	24	213	263	58