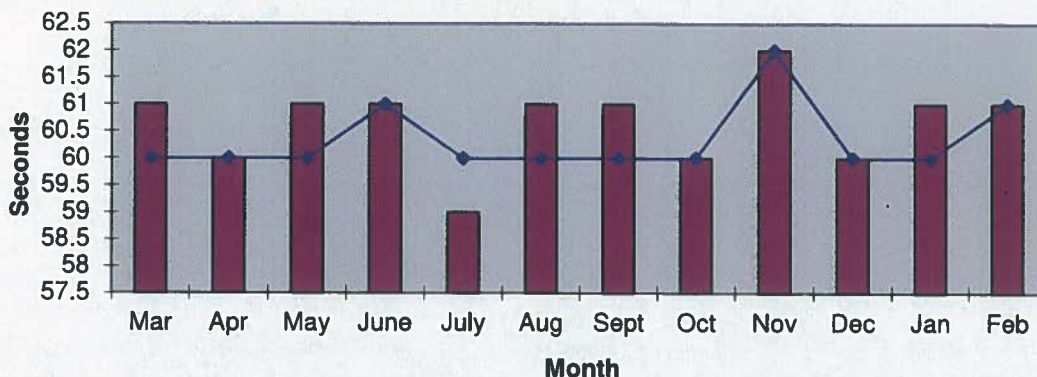
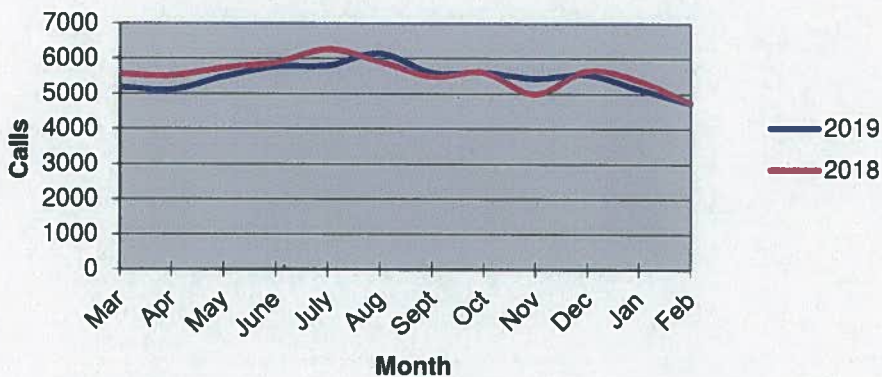


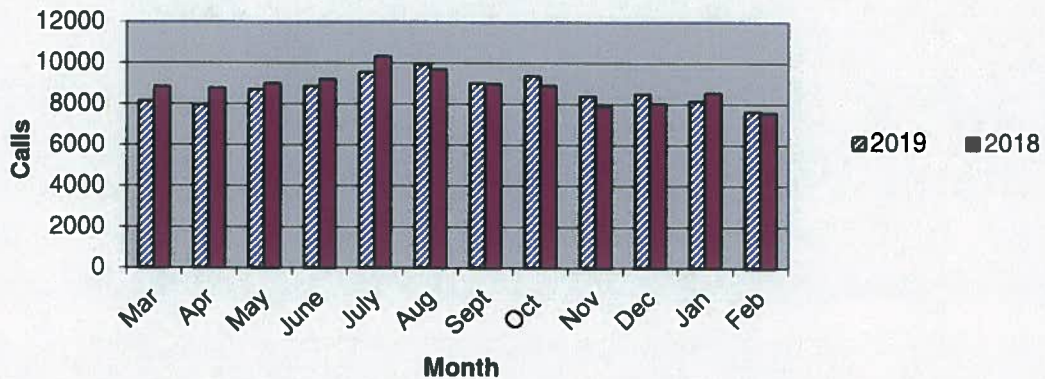
Priority 1 Dispatch Times- Police



911 Calls



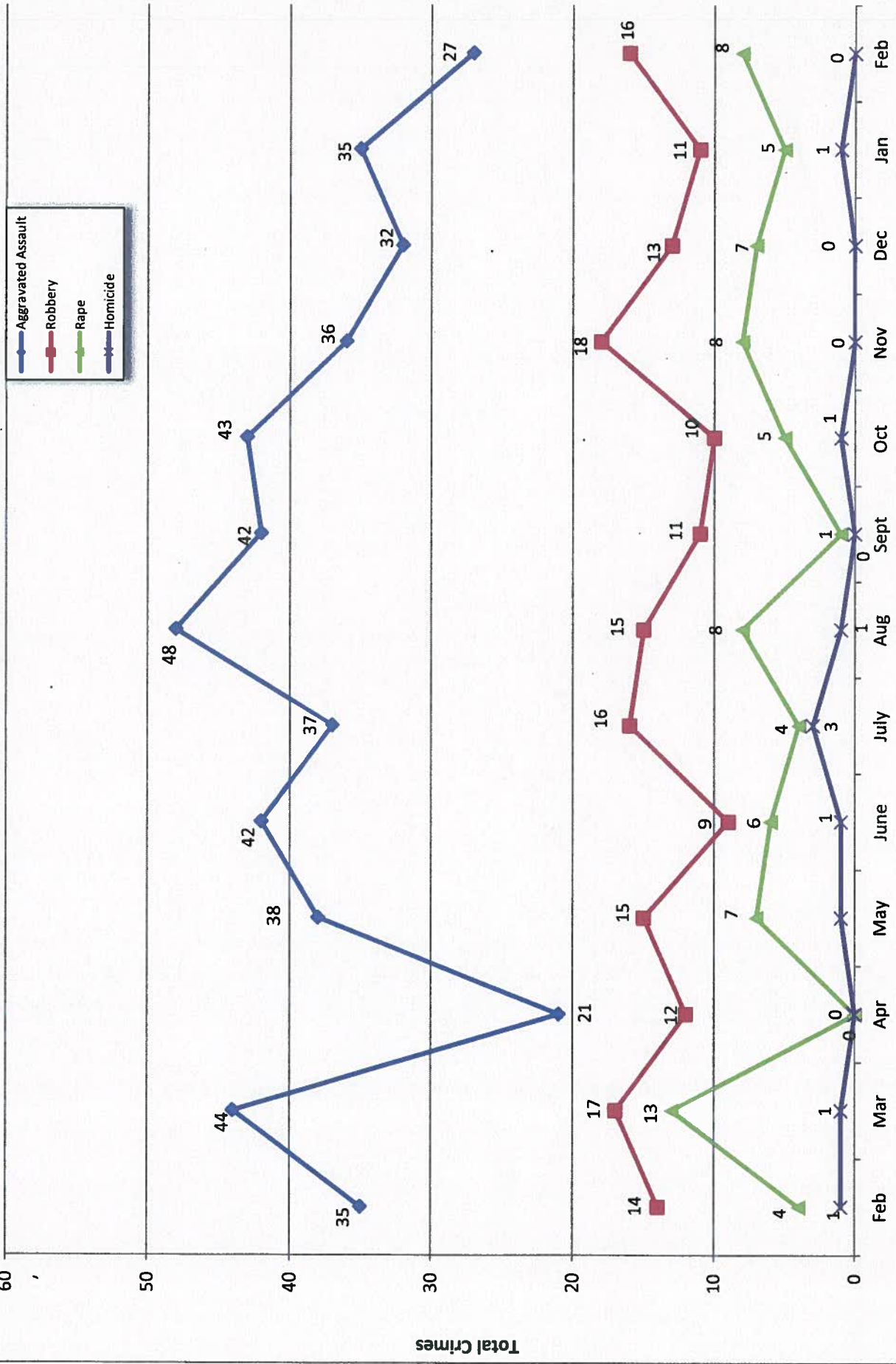
Calls for Service



**OCEANSIDE POLICE DEPARTMENT
FBI INDEX CRIMES**

		MONTHLY CASE ACTIVITY 2019												YEAR TO DATE		% CHANGE		
														COMPARISON				
		JAN	FEB	MAR	APR	MAY	JUN	JUL	AUG	SEP	OCT	NOV	DEC	2018	2019			
1. HOMICIDE	Actual	0	0												1	0	-1	100.0%
	Cleared	0	0												1	0	-1	-100.0%
2. RAPE	Actual	3	8												8	11	3	37.5%
	Cleared	0	0												4	0	-4	-100.0%
3. ROBBERY	Actual	13	16												21	29	8	38.1%
	Cleared	2	7												4	9	5	125.0%
4. AGGR. ASSAULT	Actual	34	27												67	61	-6	-9.0%
	Cleared	16	12												25	28	3	12.0%
5. BURGLARY	Actual	30	41												97	71	-26	-26.8%
	Cleared	3	3												9	6	-3	-33.3%
6. LARCENY THEFT	Actual	159	297												470	456	-14	-3.0%
	Cleared	19	22												43	41	-2	-4.7%
7. AUTO THEFT	Actual	24	41												94	65	-29	-30.9%
	Cleared	2	5												4	7	3	75.0%
TOTAL INDEX CRIMES	Actual	263	430												758	693	-65	-8.6%
	Cleared	42	49												90	91	1	1.1%
TOTAL PERSON CRIMES	Actual	50	51												97	101	4	4.1%
	Cleared	18	19												34	37	3	8.8%
TOTAL PROPERTY CRIMES	Actual	213	379												664	592	-72	-10.8%
	Cleared	24	30												56	54	-2	-3.6%
ARSON	Actual	1	2												4	3	-1	-25.0%
Y-T-D Loss \$600.00	Cleared	0	1												1	1	0	0.0%

Part 1 Crimes by Month (Violent Crimes) 2019

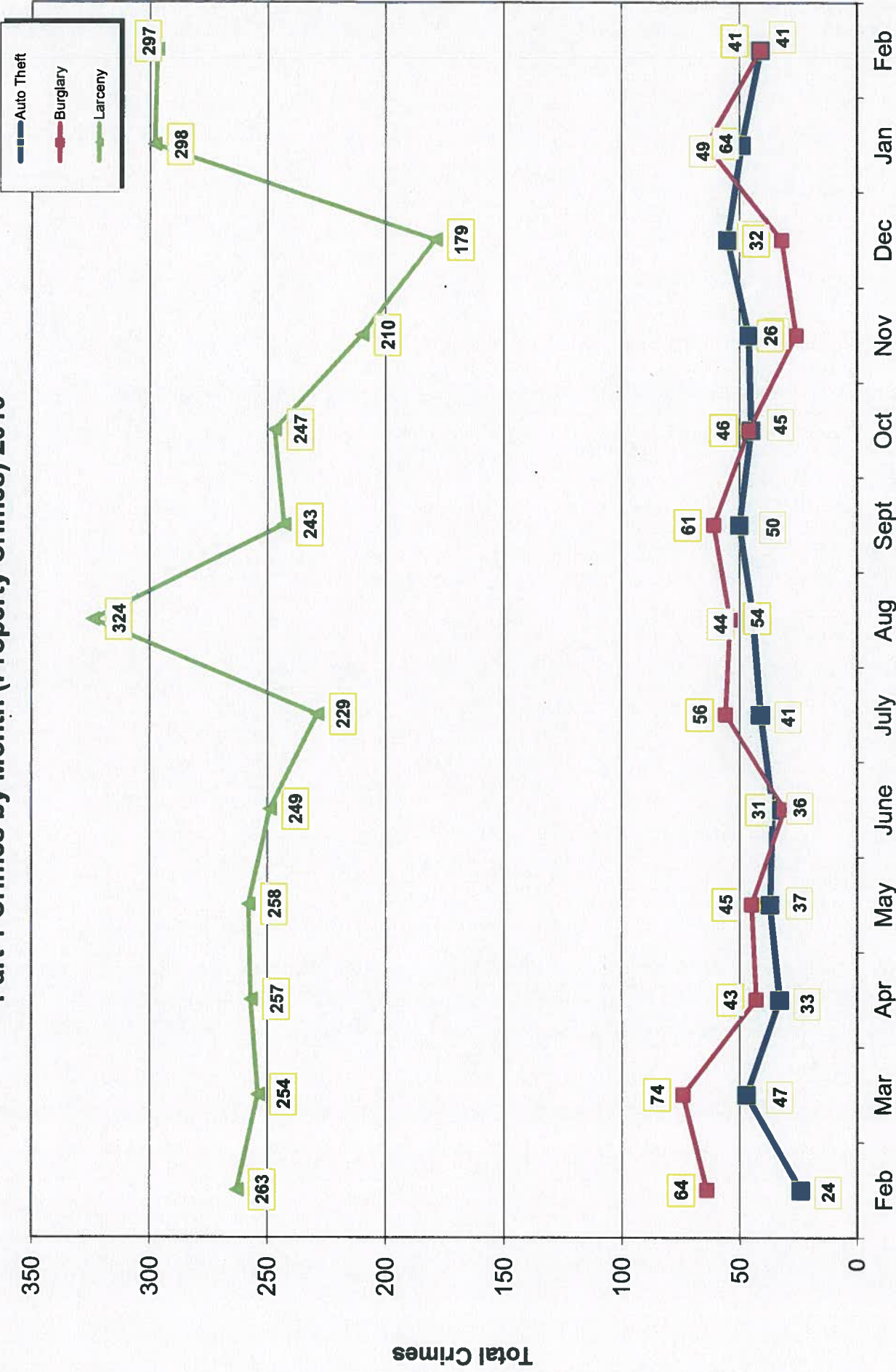


- 2018 -

Month

- 2019 -

Part 1 Crimes by Month (Property Crimes) 2019



- 2018 -

Month

- 2019 -

Traffic Collisions February 2018 - February 2019





UCR Crimes by GeoArea

Required Parameters
 Reporting Period: Feb 2019
 Agency: OCEANSIDE

Optional Parameters
 Geographical Area: All Beats
 Group by: Agency Select by: Neighborhood

Prior Report Number: S1STA120

Neighborhood	MURDER	RAPE	RAPE (HISTORICAL)	ROBBERY—	AGGRVD	VIOLENT	BURGLARY	RESID	NRESID	TOTAL	\$400+	<\$400	TOTAL	THEFT	CRM TL	PROPERTY	CRIME	CAR	PROWL
Agency = OCEANSIDE																			
AIRPORT	0	0	0	0	0	0	0	0	0	0	2	3	5	3	8	8	8	3	3
EASTSIDE/CAPISTRANO	0	4	3	0	1	3	8	2	3	5	5	8	13	3	21	29	29	10	10
FIRE MOUNTAIN	0	0	0	0	0	2	2	0	1	1	16	14	30	3	34	36	36	10	10
GUAJOME	0	0	0	0	0	1	1	0	2	2	7	5	12	1	15	16	16	7	7
IVY RANRAN DEL ORO	0	0	0	2	0	2	4	6	6	12	21	24	45	8	65	69	69	26	26
LAKE	0	0	0	1	0	1	2	0	2	2	3	11	14	4	20	22	22	3	3
MIRA COSTA	0	0	0	0	0	0	0	2	0	2	5	15	20	5	27	27	27	12	12
MISSN MESA/LOMA ALTA	0	0	0	1	4	2	7	0	0	0	6	15	21	1	22	29	29	9	9
MORRO HILLS	0	0	0	0	0	4	4	1	0	1	3	3	6	0	7	11	11	2	2
NORTH VALLEY	0	0	0	0	0	1	1	1	0	1	1	3	4	2	7	8	8	1	1
OCEAN HILLS	0	0	0	0	0	0	0	0	0	0	3	4	7	0	7	7	7	4	4
OCEANA	0	1	1	0	1	0	2	0	0	0	2	2	4	1	5	7	7	2	2
SAN LUIS REY	0	0	0	0	4	4	8	4	0	4	20	22	42	5	51	59	59	20	20
SOUTH OCEANSIDE	0	0	0	0	0	0	0	0	1	1	4	6	10	1	12	12	12	3	3
TOWNSITE	0	3	3	0	2	6	11	4	4	8	19	36	55	3	66	77	77	24	24
TRI CITY	0	0	0	0	0	1	1	1	1	2	5	3	8	1	11	12	12	3	3
UNKNOWN	0	0	0	0	0	0	0	0	0	0	1	0	1	0	1	1	1	0	0
SUB-TOTAL	0	8	7	4	12	27	51	21	20	41	123	174	297	41	379	430	430	139	139
GRAND TOTALS	0	8	7	4	12	27	51	21	20	41	123	174	297	41	379	430	430	139	139



UCR Crimes by GeoArea

Required Parameters
Reporting Period: Jan 2019 to Feb 2019
Agency: OCEANSIDE

Optional Parameters
Geographical Area: All Beats
Group by: Agency Select by: Neighborhood

Prior Report Number: S1STA120

Neighborhood	MURDER	RAPE	RAPE (HISTORICAL)	ROBBERY—	ARMED	ST/ ARM	ASSAULT	CRIM TL	VIOLENT	AGGRVD	BURGLARY—	TOTAL	\$400+	<\$400	TOTAL	THEFT	CRM TL	PROPERTY	CRIME	CAR
Agency = OCEANSIDE																				
AIRPORT	0	1	1	1	0	1	0	0	2	0	1	1	3	5	8	3	12		14	4
EASTSIDE/CAPISTRANO	0	4	3	3	0	2	8	14	2	4	6	6	6	11	17	4	27		41	11
FIRE MOUNTAIN	0	0	0	0	0	0	2	2	1	1	2	2	29	24	53	5	60		62	17
GUAJOME	0	0	0	0	0	0	1	1	1	3	4	4	9	9	18	1	23		24	9
IVY RAN/RAN DEL ORO	0	0	0	0	4	0	4	8	7	12	19	31	34	34	65	13	97		105	36
LAKE	0	0	0	0	2	0	2	4	1	2	3	4	4	23	27	5	35		39	4
MIRA COSTA	0	0	0	0	0	0	1	1	2	2	4	9	18	18	27	6	37		38	17
MISSN MESA/LOMA ALTA	0	0	0	0	2	5	6	13	1	0	1	8	22	30	30	2	33		46	12
MORRO HILLS	0	0	0	0	0	0	4	4	1	0	1	3	7	10	10	2	13		17	4
NORTH VALLEY	0	0	0	0	0	0	5	5	1	0	1	5	4	9	9	2	12		17	2
OCEAN HILLS	0	0	0	0	0	0	2	2	0	0	0	4	5	9	9	1	10		12	4
OCEANA	0	1	1	1	0	1	0	2	0	0	0	2	4	6	6	1	7		9	4
SAN LUIS REY	0	2	2	2	1	4	5	12	7	0	7	24	34	58	58	8	73		85	24
SOUTH OCEANSIDE	0	0	0	0	0	0	3	3	1	2	3	7	12	19	19	3	25		28	6
TOWNSITE	0	3	3	3	2	4	18	27	9	7	16	34	52	86	86	7	109		136	35
TRI CITY	0	0	0	0	1	0	0	1	2	1	3	7	6	13	13	2	18		19	8
UNKNOWN	0	0	0	0	0	0	0	0	0	0	0	1	0	0	1	0	1		1	0
SUB-TOTAL	0	11	10	12	17	17	61	101	36	35	71	186	270	456	456	65	592		693	197
GRAND TOTALS	0	11	10	12	17	17	61	101	36	35	71	186	270	456	456	65	592		693	197