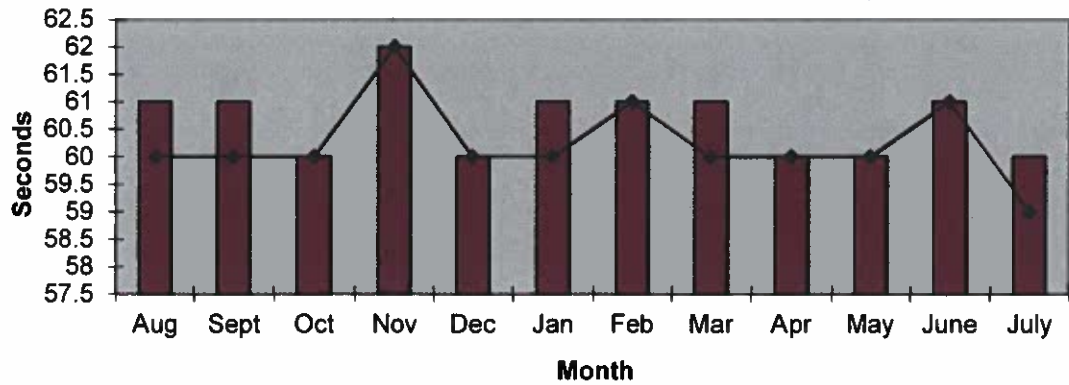
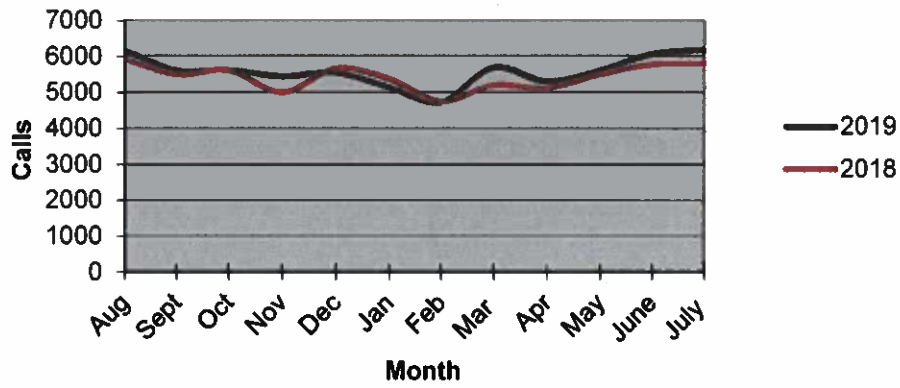


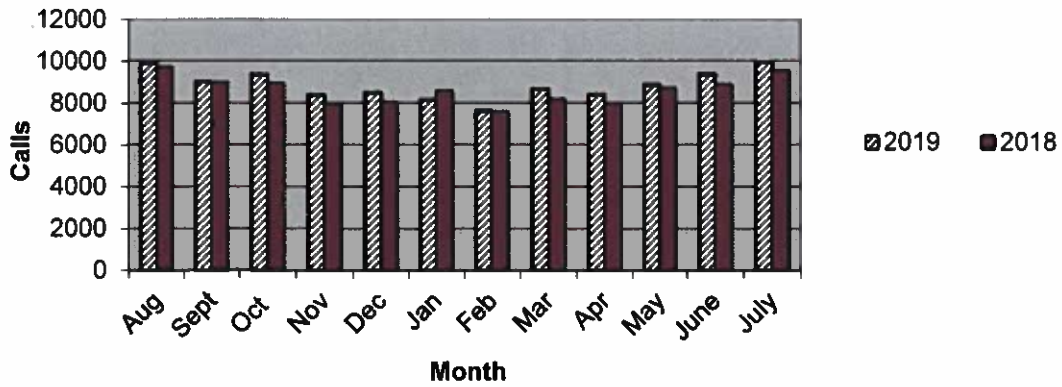
Priority 1 Dispatch Times- Police



911 Calls



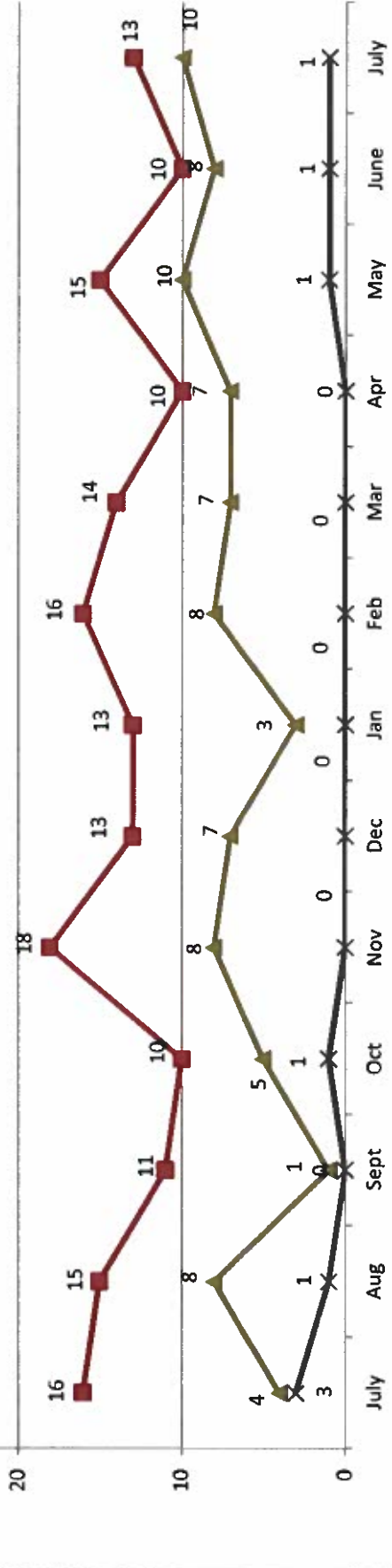
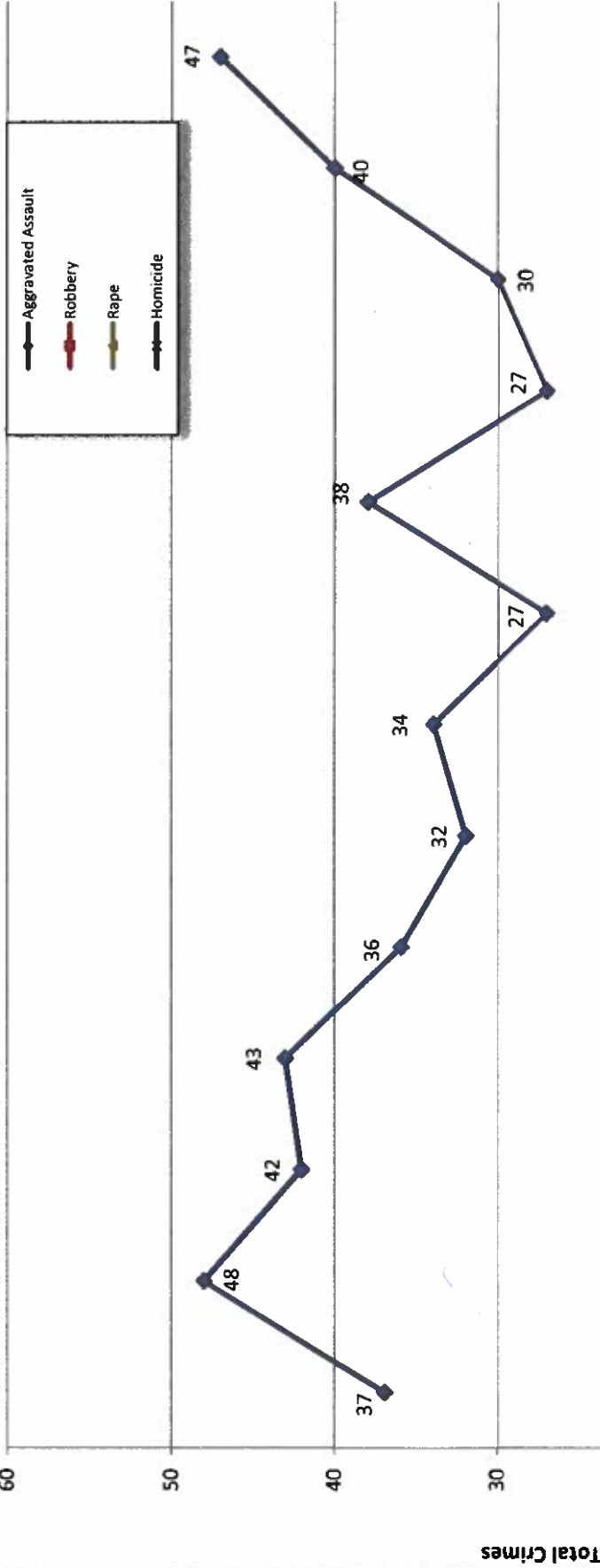
Calls for Service



**OCEANSIDE POLICE DEPARTMENT
FBI INDEX CRIMES**

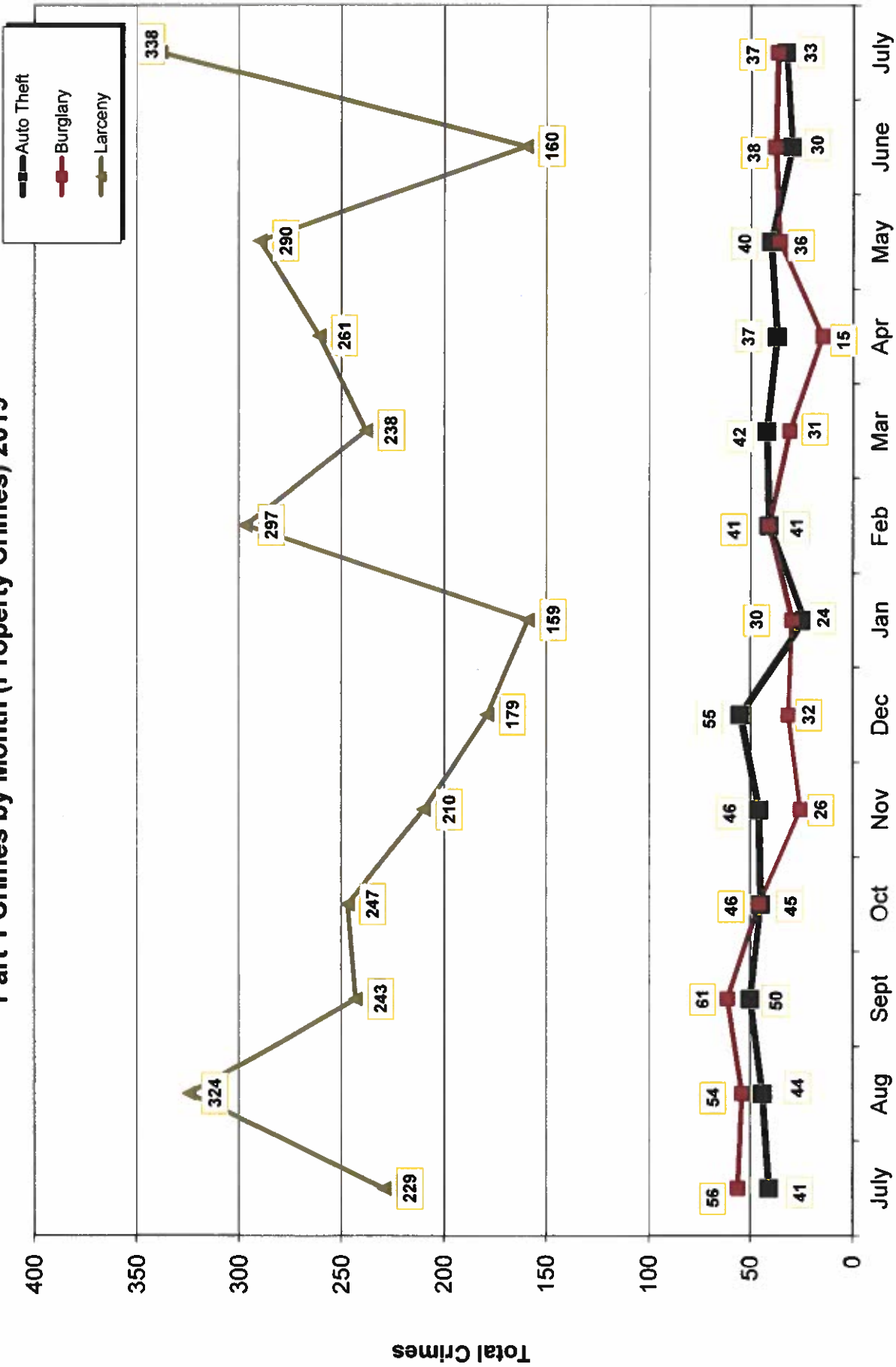
	MONTHLY CASE ACTIVITY 2019													YEAR TO DATE COMPARISON		% CHANGE
	JAN	FEB	MAR	APR	MAY	JUN	JUL	AUG	SEP	OCT	NOV	DEC	2018	2019 CHANGE		
1. HOMICIDE	0	0	0	0	1	1	1	1					4	3	-1	-25.0%
	0	0	0	0	1	1	1	1					3	3	0	0.0%
2. RAPE	3	8	7	7	10	8	10						40	53	13	32.5%
	0	0	0	1	2	2	2						6	7	1	16.7%
3. ROBBERY	13	16	14	10	15	10	13						81	91	10	12.3%
	2	7	3	7	4	4	4						18	31	13	72.2%
4. AGGR. ASSAULT	34	27	38	27	30	40	47						244	243	-1	-0.4%
	16	12	15	15	14	14	19						101	105	4	4.0%
5. BURGLARY	30	41	31	15	36	38	37						314	228	-86	-27.4%
	3	3	4	5	0	3	3						31	21	-10	-32.3%
6. LARCENY THEFT	159	297	238	261	290	160	338						1582	1743	161	10.2%
	19	22	16	25	14	14	15						118	125	7	5.9%
7. AUTO THEFT	24	41	42	37	40	30	33						271	247	-24	-8.9%
	2	5	1	2	4	2	2						18	18	0	0.0%
TOTAL INDEX CRIMES	263	430	370	357	422	287	479						2539	2608	69	2.7%
	42	49	39	55	39	40	46						295	310	15	5.1%
TOTAL PERSON CRIMES	50	51	59	44	56	59	71						369	390	21	5.7%
	18	19	18	23	21	21	26						128	146	18	14.1%
TOTAL PROPERTY CRIMES	213	379	311	313	366	228	408						2167	2218	51	2.4%
	24	30	21	32	18	19	20						167	164	-3	-1.8%
ARSON	1	2	5	0	0	2	2						12	12	0	0.0%
Y-T-D Loss \$2714	0	1	3	0	0	2	1						1	7	6	600.0%

Part 1 Crimes by Month (Violent Crimes) 2019



- 2018 - Month - 2019 -

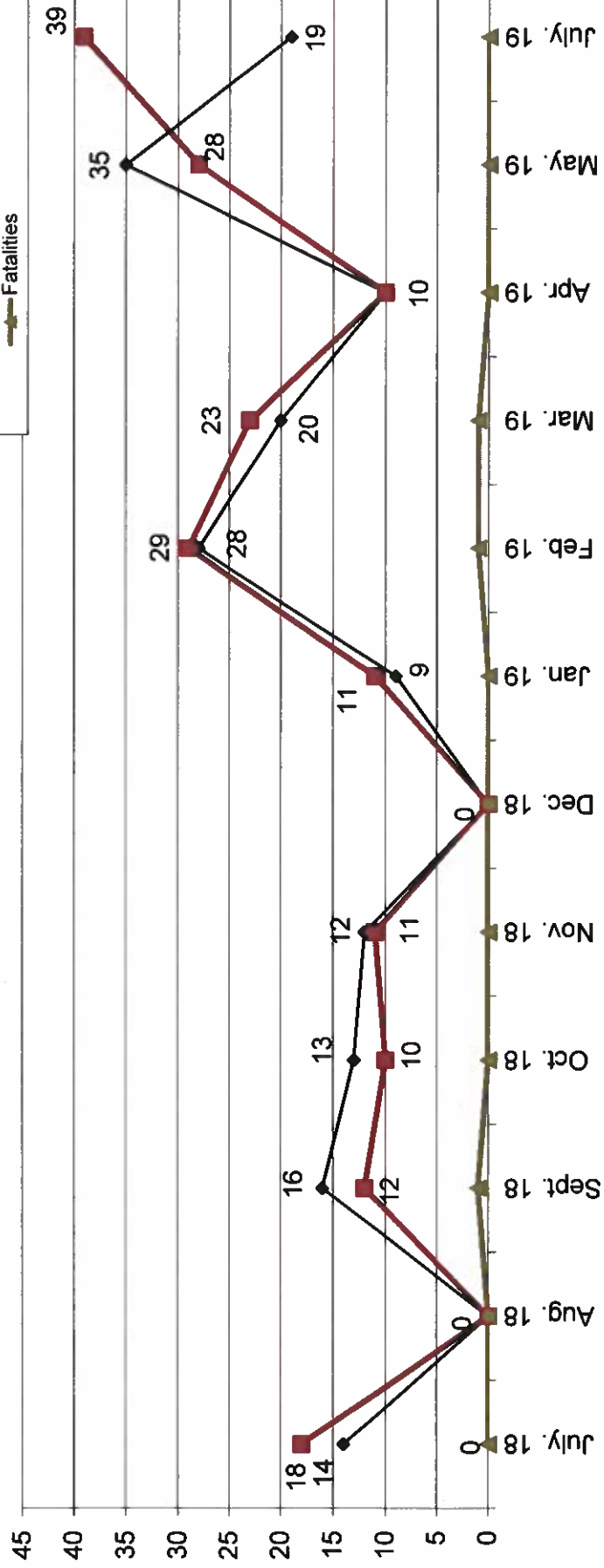
Part 1 Crimes by Month (Property Crimes) 2019



- 2018 -

- 2019 -

Traffic Collisions July 2018 - July 2019





UCR Crimes by GeoArea

Required Parameters
Reporting Period: Jul 2019
Agency: OCEANSIDE

Optional Parameters
Geographical Area: All Beats
Group by: Agency Select by: Neighborhood

Prior Report Number: S1STA120

Neighborhood	ROBBERY--		AGGRVD		VIOLENT		BURGLARY--		LARCENY-THEFT--		M.VEH		PROPERTY		CRIME		CAR
	MURDER	RAPE (HISTORICAL)	RAPE	ARMED	ST/ ARM	ASSAULT	CRM TL	RESID	NRESID	TOTAL	\$400+	<\$400	TOTAL	THEFT	CRM TL	IDX TL	
Agency = OCEANSIDE																	
AIRPORT	0	0	0	1	1	5	7	1	0	1	3	2	5	1	7	14	2
EASTSIDE/CAPISTRANO	0	1	1	0	0	1	2	4	0	4	3	18	21	3	28	30	8
FIRE MOUNTAIN	0	0	0	0	2	4	6	0	6	6	9	28	37	2	45	51	10
GUAJOME	0	0	0	0	1	1	2	0	0	0	6	17	23	1	24	26	15
IVY RAN/RAN DEL ORO	0	3	2	0	1	2	6	2	4	6	17	21	38	2	46	52	25
LAKE	0	0	0	1	0	4	5	1	2	3	6	21	27	0	30	35	7
MIRA COSTA	0	-1	1	0	1	5	5	1	0	1	7	8	15	4	20	25	11
MISSN MESALOMA ALTA	0	1	1	0	0	5	6	1	1	2	5	12	17	2	21	27	9
MORRO HILLS	0	0	0	0	0	1	1	0	0	0	4	2	6	2	8	9	4
NORTH VALLEY	0	1	1	0	0	3	4	3	0	3	7	7	14	3	20	24	6
OCEAN HILLS	0	0	0	0	0	0	0	0	0	0	2	5	7	0	7	7	5
OCEANA	0	0	0	0	0	0	0	0	0	0	3	4	7	0	7	7	3
SAN LUIS REY	0	1	1	0	0	3	4	3	1	4	12	19	31	1	36	40	14
SOUTH OCEANSIDE	0	0	0	1	0	1	2	1	0	1	2	11	13	4	18	20	3
TOWNSITE	1	4	2	2	2	11	20	2	4	6	26	39	65	8	79	99	22
TRI CITY	0	0	0	1	-1	1	1	0	0	0	2	10	12	0	12	13	1
UNKNOWN	0	0	0	0	0	0	0	0	0	0	0	0	0	0	0	0	0
SUB-TOTAL	1	10	7	6	7	47	71	19	18	37	114	224	338	33	408	479	145
GRAND TOTALS	1	10	7	6	7	47	71	19	18	37	114	224	338	33	408	479	145



UCR Crimes by GeoArea

Required Parameters
Reporting Period: Jan 2019 to Jul 2019
Agency: OCEANSIDE

Optional Parameters
Geographical Area: All Beats
Group by: Agency Select by: Neighborhood

Prior Report Number: S1STA120

Neighborhood	MURDER	RAPE (HISTORICAL)	RAPE	ROBBERY--	ARMED	ST/ ARM	ASSAULT	CRM TL	RESID	NRESID	TOTAL	\$400+	<\$400	TOTAL	THEFT	CRM TL	IDX TL	CRIME	CAR
				ROBBERY--	ARMED	ST/ ARM	ASSAULT	CRM TL	RESID	NRESID	TOTAL	\$400+	<\$400	TOTAL	THEFT	CRM TL	IDX TL	CRIME	CAR
Agency = OCEANSIDE																			
AIRPORT	0	1	1	1	2	1	7	11	1	2	3	19	22	41	14	58	69	22	
EASTSIDE/CAPISTRANO	0	6	4	1	3	3	20	30	9	4	13	25	53	78	11	102	132	41	
FIRE MOUNTAIN	0	2	2	2	2	2	9	15	4	26	30	78	116	194	14	238	253	58	
GUALOME	0	3	2	1	4	4	11	19	2	5	7	29	63	92	7	106	125	44	
IVY RAN/RAN DEL ORO	0	7	5	6	5	5	20	38	12	29	41	96	143	239	35	315	353	140	
LAKE	0	1	0	7	4	4	8	20	3	4	7	25	84	109	14	130	150	24	
MIRA COSTA	0	2	2	0	2	2	13	17	5	3	8	47	58	105	18	131	148	59	
MISSN MESALOMA ALTA	1	2	1	4	8	8	29	44	6	6	12	31	88	119	24	155	199	58	
MORRO HILLS	0	0	0	1	0	0	9	10	3	0	3	12	15	27	5	35	45	15	
NORTH VALLEY	0	4	3	0	1	1	10	15	9	1	10	24	45	69	16	95	110	39	
OCEAN HILLS	0	0	0	0	0	1	4	5	0	0	0	10	21	31	5	36	41	17	
OCEANA	0	2	2	0	1	1	3	6	0	0	0	12	17	29	3	32	38	15	
SAN LUIS REY	0	4	2	2	2	8	21	35	21	8	29	67	123	190	28	247	282	86	
SOUTH OCEANSIDE	0	0	0	2	2	3	9	14	5	5	10	25	53	78	12	100	114	23	
TOWNSITE	2	14	10	7	10	10	65	98	29	21	50	111	178	289	34	373	471	111	
TRI CITY	0	5	4	2	1	1	5	13	3	2	5	18	32	50	7	62	75	16	
UNKNOWN	0	0	0	0	0	0	0	0	0	0	0	2	1	3	0	3	3	2	
SUB-TOTAL	3	53	38	37	54	54	243	390	112	116	228	631	1,112	1,743	247	2,218	2,608	770	
GRAND TOTALS	3	53	38	37	54	54	243	390	112	116	228	631	1,112	1,743	247	2,218	2,608	770	