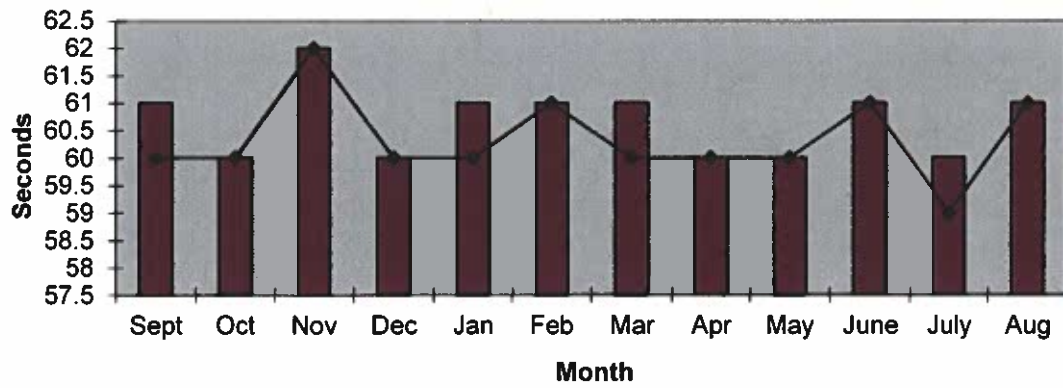
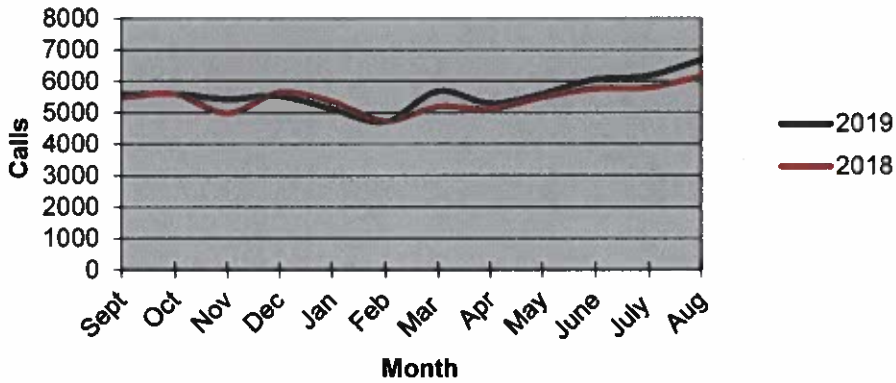


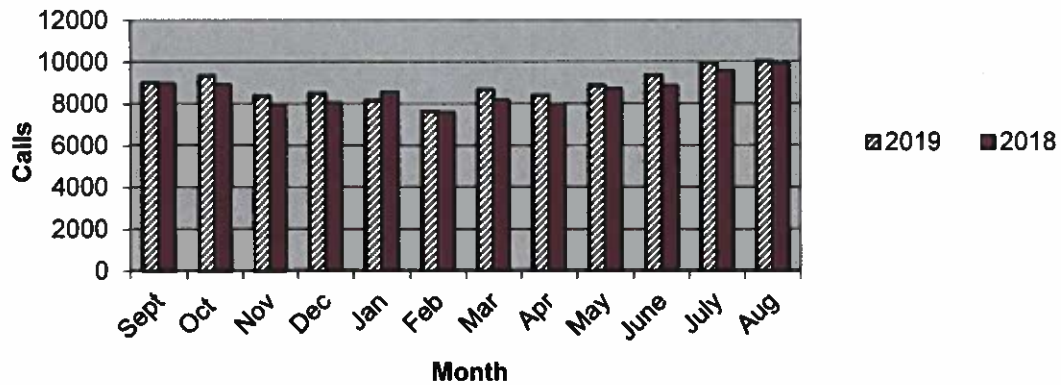
### Priority 1 Dispatch Times- Police



### 911 Calls



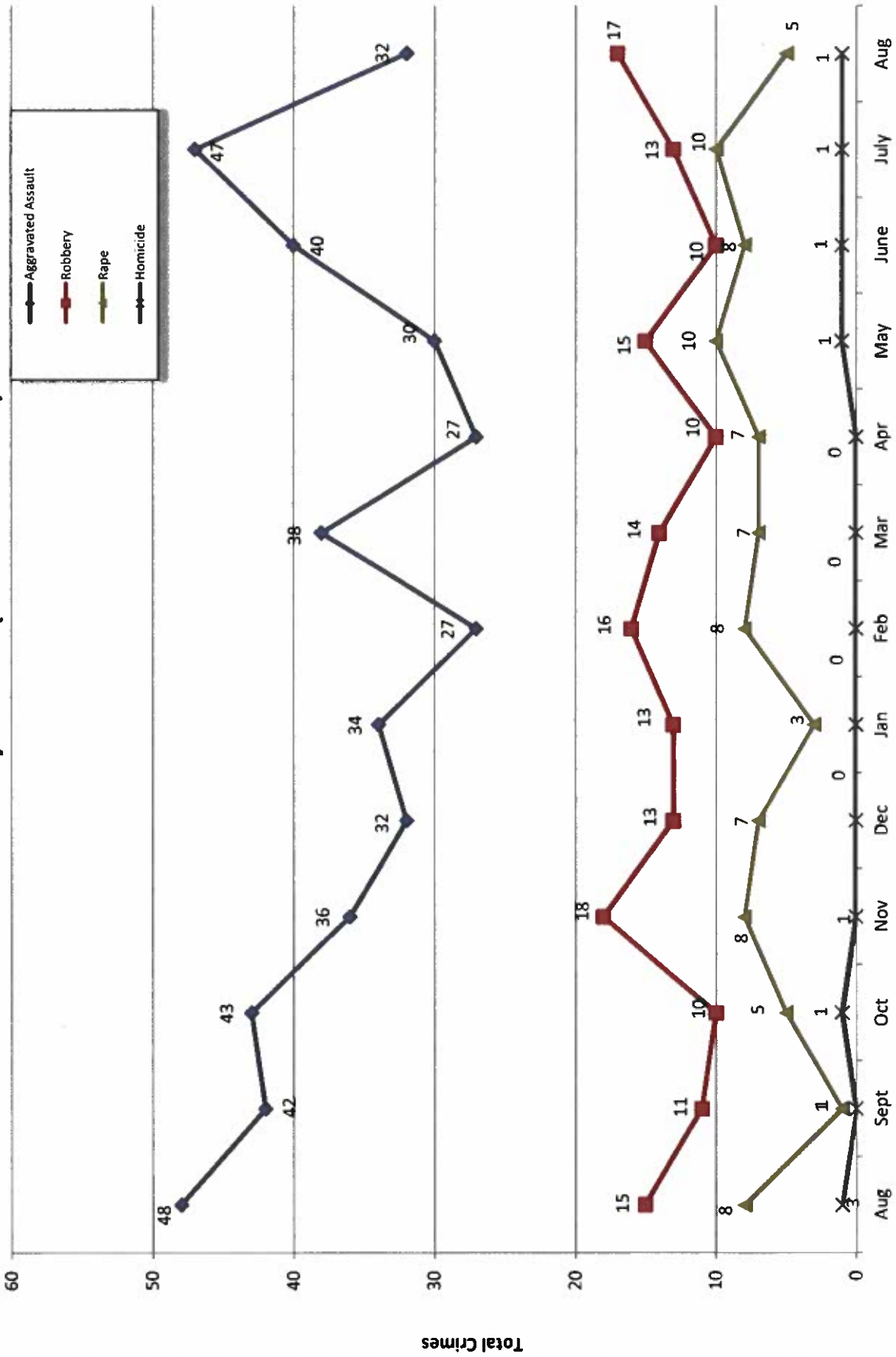
### Calls for Service



**OCEANSIDE POLICE DEPARTMENT  
FBI INDEX CRIMES**

	MONTHLY CASE ACTIVITY 2019												YEAR TO DATE COMPARISON		% CHANGE	
	JAN	FEB	MAR	APR	MAY	JUN	JUL	AUG	SEP	OCT	NOV	DEC	2018	2019		CHANGE
	1. HOMICIDE	0	0	0	0	1	1	1	1	1	1	1	1	5		4
	Cleared	0	0	0	0	1	1	1	0	0	0	0	3	3	0	
2. RAPE	3	8	7	7	10	8	10	5	5	15	15	15	43	58	34.9%	
	Cleared	0	0	0	1	2	2	1	1	2	2	2	6	8	33.3%	
3. ROBBERY	13	16	14	10	15	10	13	17	17	9	9	9	99	108	9.1%	
	Cleared	2	7	3	7	4	4	6	6	13	13	13	24	37	54.2%	
4. AGGR. ASSAULT	34	27	38	27	30	40	47	32	32	14	14	14	289	275	-4.8%	
	Cleared	16	12	15	15	14	19	18	18	-2	-2	-2	125	123	-1.6%	
5. BURGLARY	30	41	31	15	36	38	37	16	16	-114	-114	-114	358	244	-31.8%	
	Cleared	3	3	4	5	0	3	2	2	-15	-15	-15	38	23	-39.5%	
6. LARCENY THEFT	159	297	238	261	290	160	338	179	179	65	65	65	1857	1922	3.5%	
	Cleared	19	22	16	25	14	15	10	10	-6	-6	-6	141	135	-4.3%	
7. AUTO THEFT	24	41	42	37	40	30	33	33	33	-27	-27	-27	307	280	-8.8%	
	Cleared	2	5	1	2	4	2	2	2	0	0	0	20	20	0.0%	
TOTAL INDEX CRIMES	263	430	370	357	422	287	479	283	283	-70	-70	-70	2961	2891	-2.4%	
	Cleared	42	49	39	55	39	46	39	39	-8	-8	-8	357	349	-2.2%	
TOTAL PERSON CRIMES	50	51	59	44	56	59	71	55	55	9	9	9	436	445	2.1%	
	Cleared	18	19	18	23	21	26	25	25	13	13	13	158	171	8.2%	
TOTAL PROPERTY CRIMES	213	379	311	313	366	228	408	228	228	-76	-76	-76	2522	2446	-3.0%	
	Cleared	24	30	21	32	18	20	14	14	-21	-21	-21	199	178	-10.6%	
ARSON	1	2	5	0	0	2	2	1	1	0	0	0	13	13	0.0%	
Y-T-D Loss \$3214.00	0	1	3	0	0	2	1	1	1	6	6	6	2	8	300.0%	

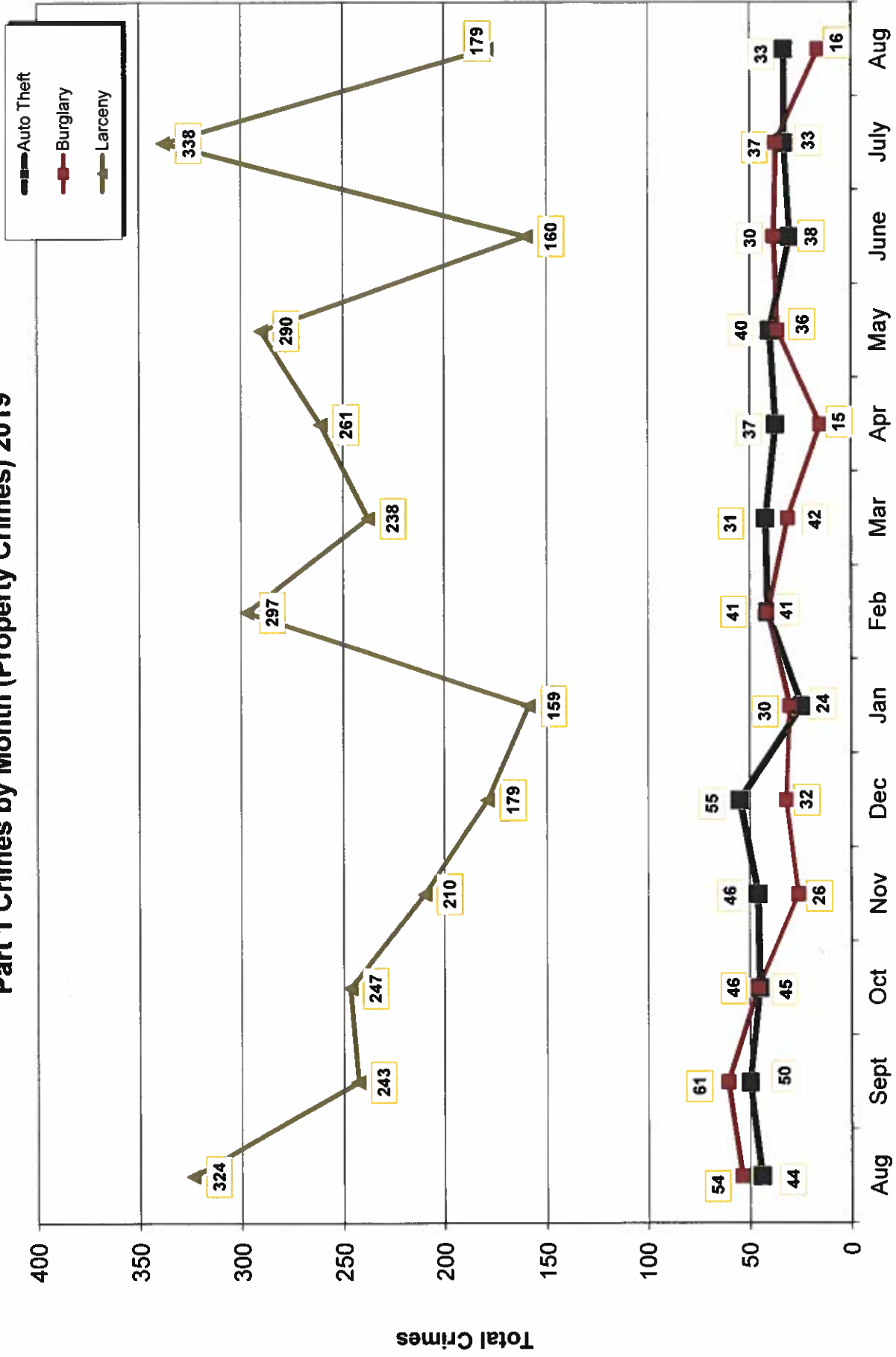
# Part 1 Crimes by Month (Violent Crimes) 2019



- 2018 -

- 2019 -

# Part 1 Crimes by Month (Property Crimes) 2019

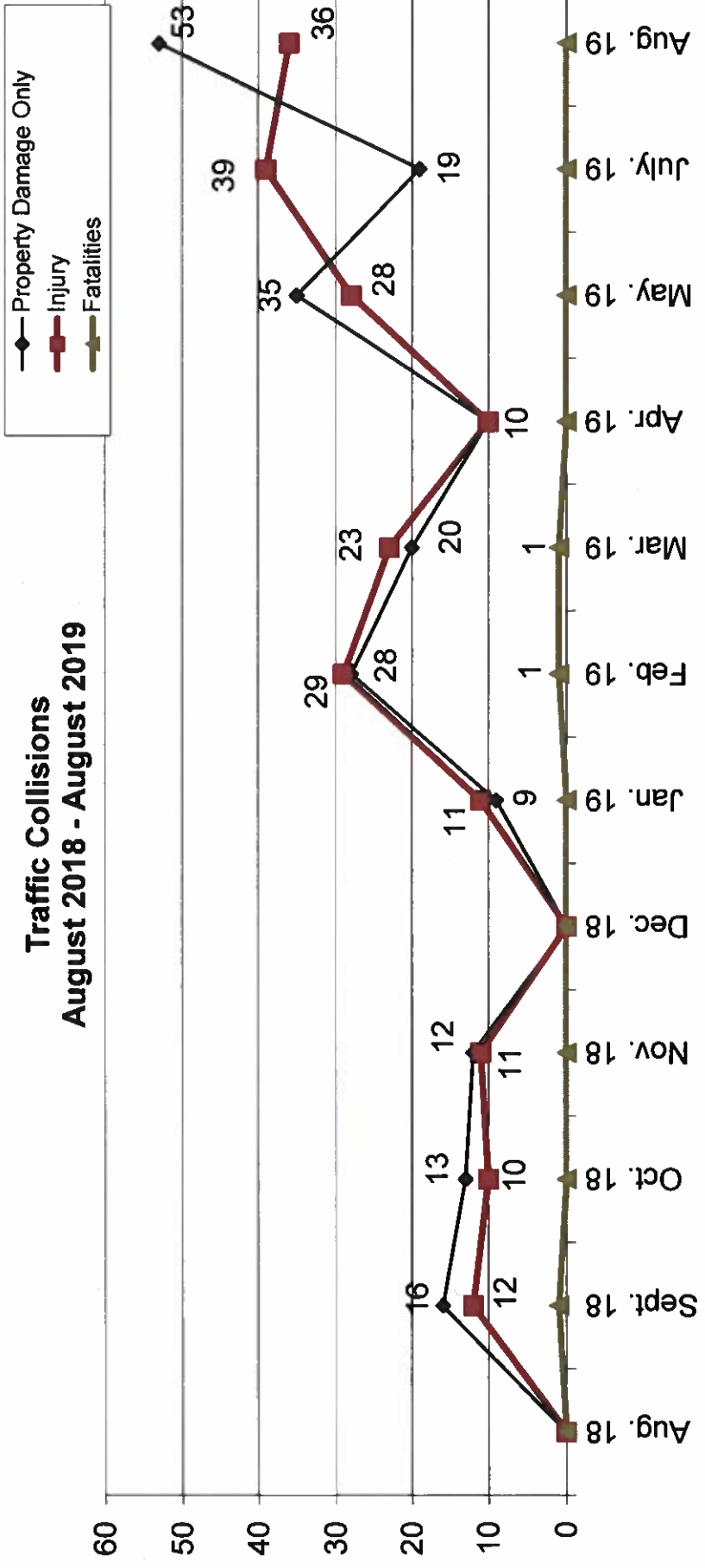


Month

- 2018 -

- 2019 -

### Traffic Collisions August 2018 - August 2019





# UCR Crimes by GeoArea

**Required Parameters**  
 Reporting Period: Aug 2019  
 Agency: OCEANSIDE

**Optional Parameters**  
 Geographical Area: All Beats  
 Group by: Agency Select by: Neighborhood

Prior Report Number: S1STA120

Neighborhood	MURDER	RAPE (HISTORICAL)	RAPE (HISTORICAL)	ROBBERY--	AGGRVD	VIOLENT	BURGLARY---	TOTAL	\$400+	<\$400	TOTAL	THEFT	CRIM TL	PROPERTY	CRIME	CAR
				ARMED	ASSAULT	CRM TL	RESID	NRESID	TOTAL						IDX TL	PROWL
				ST/ ARM												
Agency = OCEANSIDE																
AIRPORT	0	0	0	0	1	1	0	0	0	2	3	5	1	6	7	5
EASTSIDE/CAPISTRANO	0	0	-1	1	2	2	0	0	0	2	2	4	3	7	9	2
FIRE MOUNTAIN	0	0	0	1	0	1	1	2	3	7	15	22	3	28	29	3
GUAJOME	0	0	0	0	0	0	0	0	0	2	2	4	0	4	4	2
IVY RAN/RAN DELORO	0	0	1	3	-2	2	0	6	6	13	12	25	9	40	42	14
LAKE	0	0	0	1	0	1	1	0	1	2	8	10	0	11	12	2
MIRA COSTA	0	1	0	1	1	3	2	0	2	2	5	7	0	9	12	5
MISSN MESALOMA ALTA	1	1	0	2	5	9	0	-1	-1	4	11	15	0	14	23	7
MORRO HILLS	0	0	0	0	2	2	0	0	0	1	2	3	0	3	5	3
NORTH VALLEY	0	0	0	0	5	5	0	0	0	2	10	12	4	16	21	5
OCEAN HILLS	0	0	0	0	0	0	0	0	0	1	5	6	0	6	6	1
OCEANA	0	0	0	0	0	0	0	0	0	1	4	5	1	6	6	2
SAN LUIS REY	0	1	0	0	3	4	0	0	0	7	14	21	7	28	36	7
SOUTH OCEANSIDE	0	0	0	2	2	4	2	1	3	4	5	9	1	13	17	3
TOWNSITE	0	2	1	2	9	14	0	1	1	12	15	27	4	32	46	6
TRI CITY	0	0	0	0	3	3	1	0	1	0	4	4	0	5	8	1
UNKNOWN	0	0	0	0	0	0	0	0	0	0	0	0	0	0	0	0
<b>SUB-TOTAL</b>	<b>1</b>	<b>5</b>	<b>4</b>	<b>1</b>	<b>16</b>	<b>32</b>	<b>55</b>	<b>7</b>	<b>16</b>	<b>62</b>	<b>117</b>	<b>179</b>	<b>33</b>	<b>228</b>	<b>283</b>	<b>68</b>
<b>GRAND TOTALS</b>	<b>1</b>	<b>5</b>	<b>4</b>	<b>1</b>	<b>16</b>	<b>32</b>	<b>55</b>	<b>7</b>	<b>16</b>	<b>62</b>	<b>117</b>	<b>179</b>	<b>33</b>	<b>228</b>	<b>283</b>	<b>68</b>





UCR Crimes by GeoArea

Required Parameters  
 Reporting Period: Jan 2019 to Aug 2019  
 Agency: OCEANSIDE

Optional Parameters  
 Geographical Area: All Beats  
 Group by: Agency Select by: Neighborhood

Prior Report Number: S1STA120

Neighborhood	MURDER	RAPE (HISTORICAL)	RAPE	ROBBERY--	ARMED	ST/ ARM	ASSAULT	VIOLENT	BURGLARY----	TOTAL	\$400+	<\$400	TOTAL	THEFT	CRM TL	IDX TL	CRIME	CAR	PROWL	
Agency = OCEANSIDE																				
AIRPORT	0	1	1	2	1	8	12	1	2	3	21	25	46	15	64	76	27			
EASTSIDE/CAPISTRANO	0	6	4	0	4	22	32	9	4	13	27	55	82	14	109	141	43			
FIRE MOUNTAIN	0	2	2	2	3	9	16	5	28	33	85	131	216	17	266	282	61			
GUAJOME	0	3	2	1	4	11	19	2	5	7	31	65	96	7	110	129	46			
IVY RAN/RAN DEL ORO	0	7	5	7	8	18	40	12	35	47	109	155	264	44	355	395	154			
LAKE	0	1	0	7	5	8	21	4	4	8	27	92	119	14	141	162	26			
MIRA COSTA	0	3	3	0	3	14	20	7	3	10	49	63	112	18	140	160	64			
MISSN MESA/LOMA ALTA	2	3	2	4	10	34	53	6	5	11	35	99	134	24	169	222	65			
MORRO HILLS	0	0	0	1	0	11	12	3	0	3	13	17	30	5	38	50	18			
NORTH VALLEY	0	4	3	0	1	15	20	9	1	10	26	55	81	20	111	131	44			
OCEAN HILLS	0	0	0	0	1	4	5	0	0	0	11	26	37	5	42	47	18			
OCEANA	0	2	2	0	1	3	6	0	0	0	13	21	34	4	38	44	17			
SAN LUIS REY	0	5	2	2	11	25	43	21	8	29	74	137	211	35	275	318	93			
SOUTH OCEANSIDE	0	0	0	2	5	11	18	7	6	13	29	58	87	13	113	131	26			
TOWNSITE	2	16	12	8	12	74	112	29	22	51	123	193	316	38	405	517	117			
TRI CITY	0	5	4	2	1	8	16	4	2	6	18	36	54	7	67	83	17			
UNKNOWN	0	0	0	0	0	0	0	0	0	0	2	1	3	0	3	3	2			
SUB-TOTAL	4	58	42	38	70	276	445	119	125	244	693	1,229	1,922	280	2,446	2,891	838			
GRAND TOTALS	4	58	42	38	70	276	445	119	125	244	693	1,229	1,922	280	2,446	2,891	838			