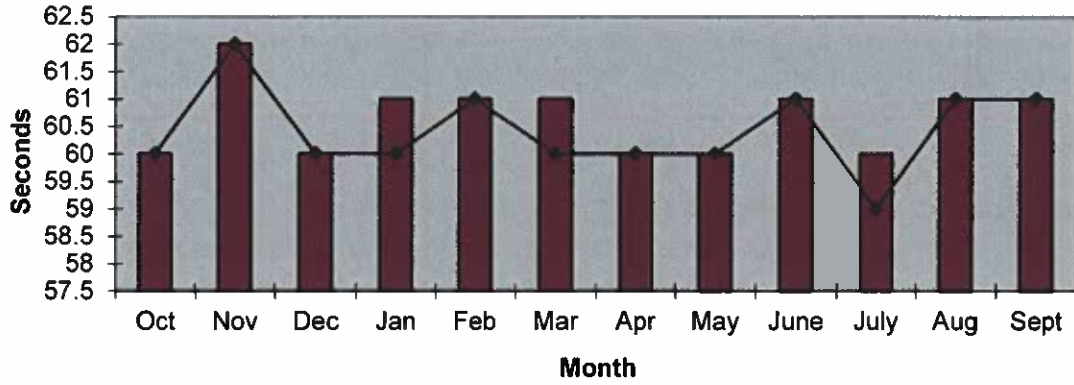
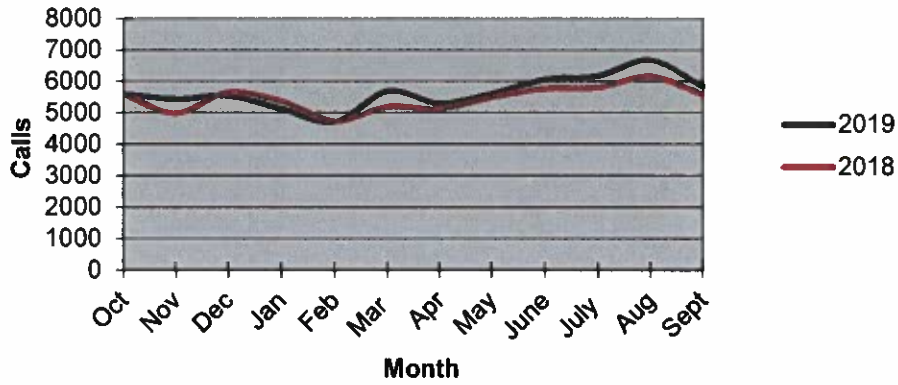


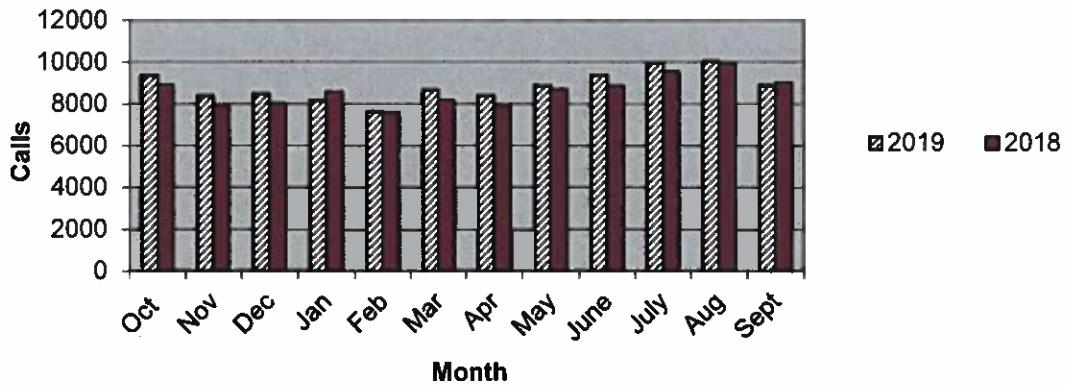
Priority 1 Dispatch Times- Police



911 Calls



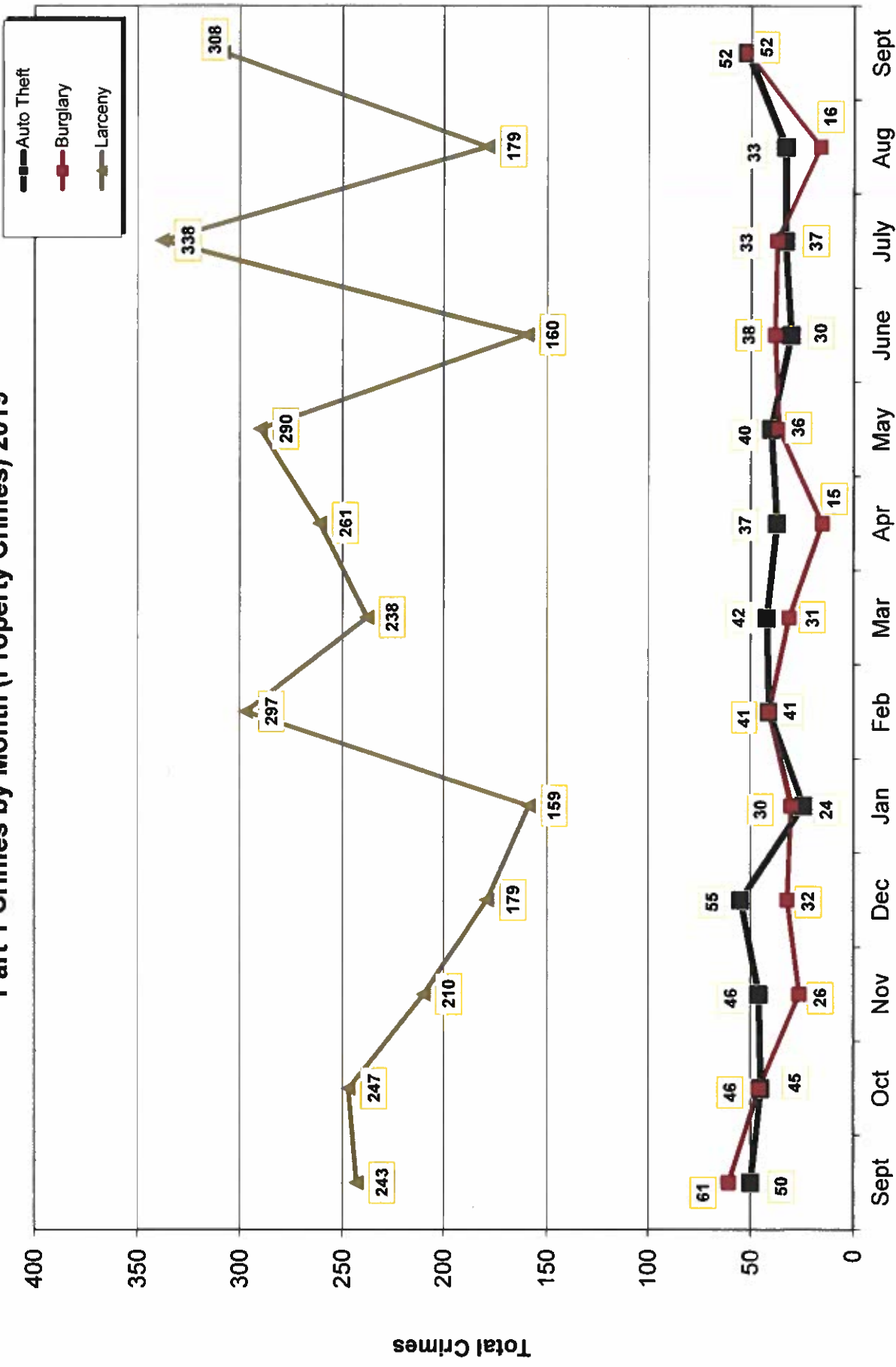
Calls for Service



**OCEANSIDE POLICE DEPARTMENT
FBI INDEX CRIMES**

	MONTHLY CASE ACTIVITY 2019												YEAR TO DATE COMPARISON		% CHANGE		
													2018	2019		CHANGE	
	JAN	FEB	MAR	APR	MAY	JUN	JUL	AUG	SEP	OCT	NOV	DEC					
1. HOMICIDE	0	0	0	0	1	1	1	1	0					6	4	-2	-33.3%
	0	0	0	0	1	1	1	0	1					4	4	0	0.0%
2. RAPE	3	8	7	7	10	8	10	5	13					49	71	22	44.9%
	0	0	0	1	2	2	2	1	2					7	10	3	42.9%
3. ROBBERY	13	16	14	10	15	10	13	17	14					112	122	10	8.9%
	2	7	3	7	4	4	4	6	3					29	40	11	37.9%
4. AGGR. ASSAULT	34	27	38	27	30	40	47	32	48					332	323	-9	-2.7%
	16	12	15	15	14	14	19	18	20					139	143	4	2.9%
5. BURGLARY	30	41	31	15	36	38	37	16	44					394	288	-106	-26.9%
	3	3	4	5	0	3	3	2	1					42	24	-18	-42.9%
6. LARCENY THEFT	159	297	238	261	290	160	338	179	289					2089	2211	122	5.8%
	19	22	16	25	14	14	15	10	22					150	157	7	4.7%
7. AUTO THEFT	24	41	42	37	40	30	33	33	42					355	322	-33	-9.3%
	2	5	1	2	4	2	2	2	4					25	24	-1	-4.0%
TOTAL INDEX CRIMES	263	430	370	357	422	287	479	283	450					3340	3341	1	0.0%
	42	49	39	55	39	40	46	39	53					396	402	6	1.5%
TOTAL PERSON CRIMES	50	51	59	44	56	59	71	55	75					499	520	21	4.2%
	18	19	18	23	21	21	26	25	26					179	197	18	10.1%
TOTAL PROPERTY CRIMES	213	379	311	313	366	228	408	228	375					2838	2821	-17	-0.6%
	24	30	21	32	18	19	20	14	27					217	205	-12	-5.5%
ARSON	1	2	5	0	0	2	2	1	3					14	16	2	14.3%
Y-T-D Loss \$5265 00	0	1	3	0	0	2	1	1	0					3	8	5	166.7%

Part 1 Crimes by Month (Property Crimes) 2019

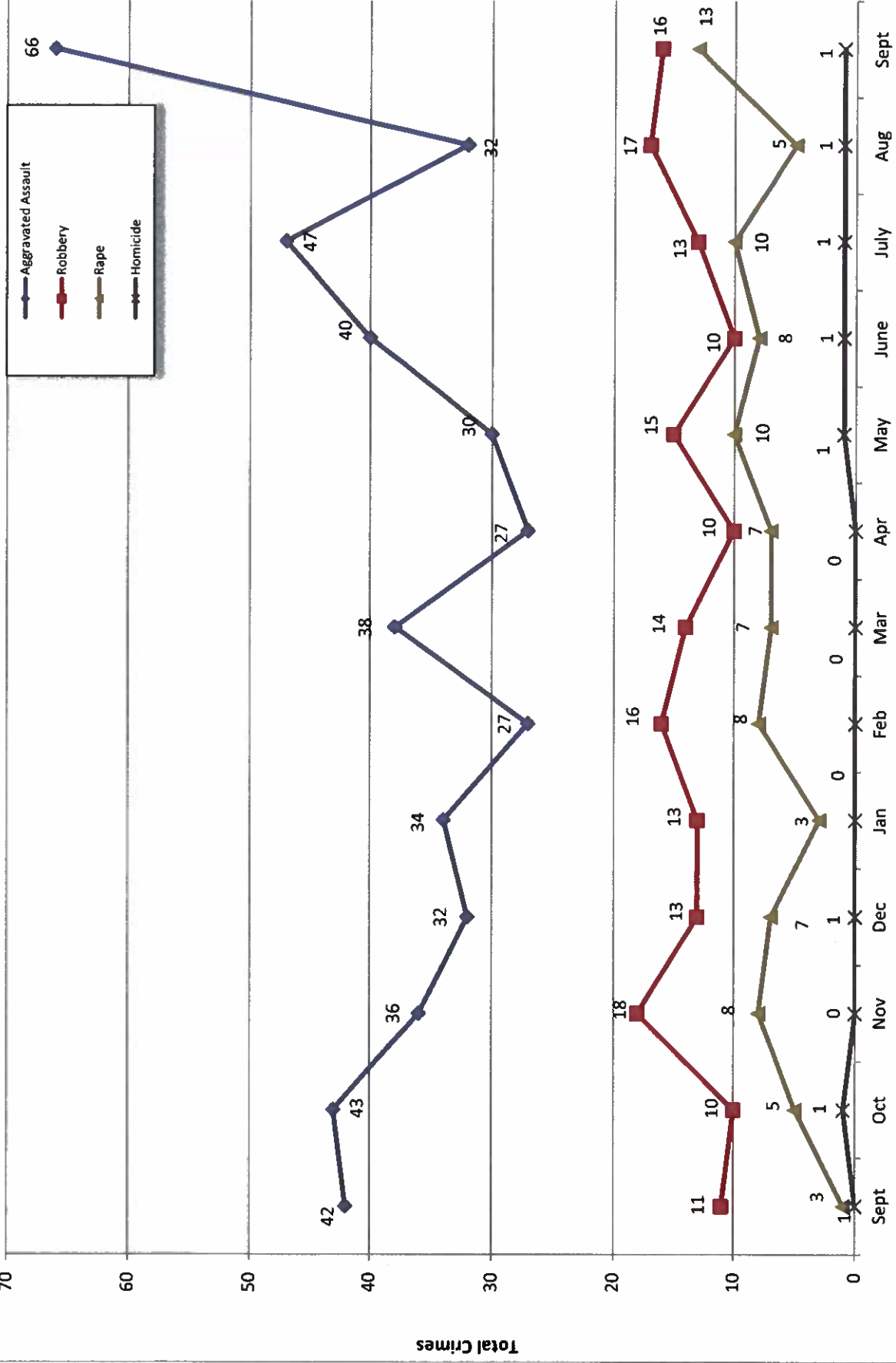


Month

- 2019 -

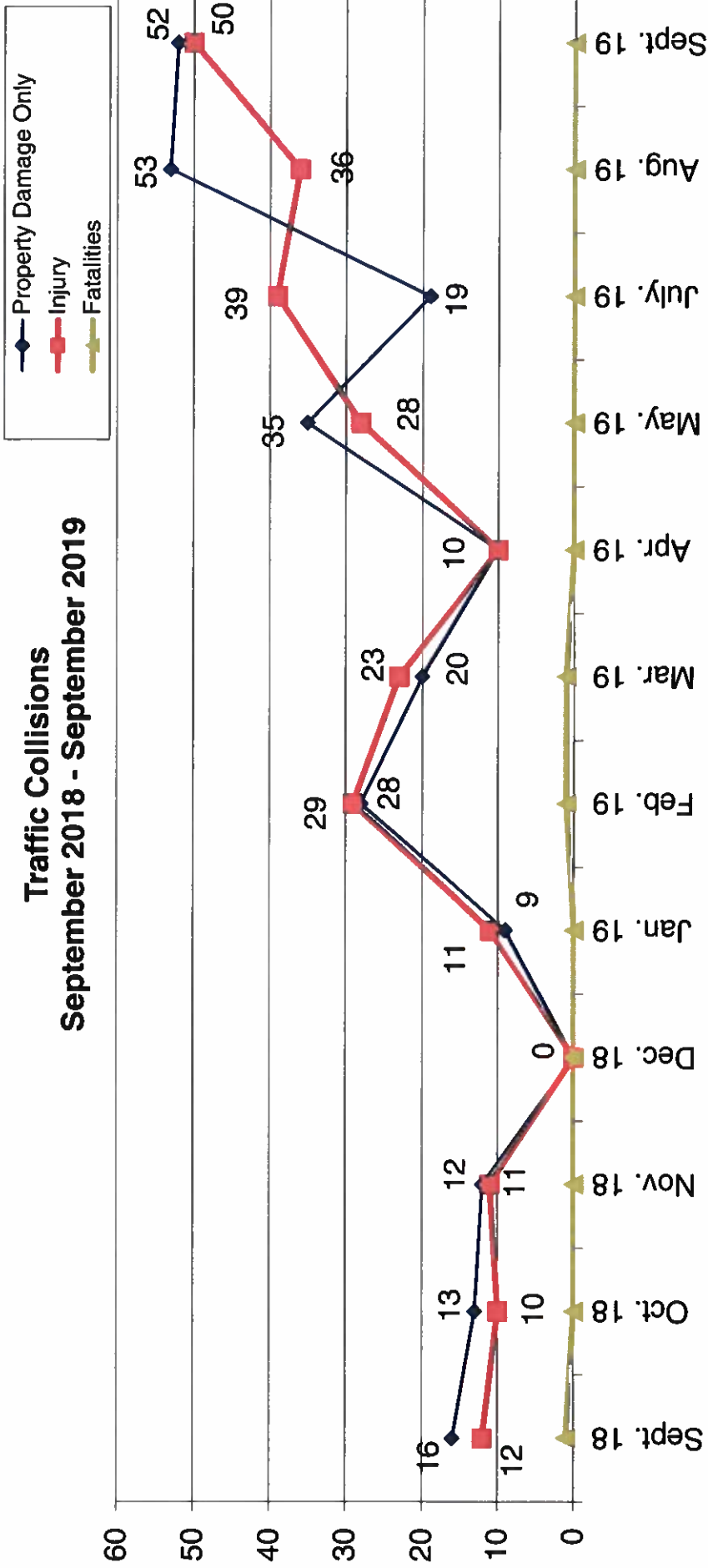
- 2018 -

Part 1 Crimes by Month (Violent Crimes) 2019



- 2018 - Month - 2019 -

Traffic Collisions September 2018 - September 2019





UCR Crimes by GeoArea

Required Parameters
 Reporting Period: Sep 2019
 Agency: OCEANSIDE

Optional Parameters
 Geographical Area: All Beats
 Group by: Agency Select by: Neighborhood

Prior Report Number: S1STA120

Neighborhood	MURDER		RAPE		ROBBERY—		AGGRVD		VIOLENT		BURGLARY—		LARCENY-THEFT—		M.VEH		PROPERTY		CRIME		CAR	PROWL
Agency = OCEANSIDE																						
AIRPORT	0	2	1	0	1	0	1	0	0	3	0	0	0	2	4	6	2	8	11	3		
EASTSIDE/CAPISTRANO	0	1	0	1	1	1	3	6	0	0	0	0	4	6	10	2	12	18	1			
FIRE MOUNTAIN	0	0	0	1	0	3	4	0	4	4	0	4	13	24	37	5	46	50	10			
GUAJOME	0	0	0	0	0	0	0	0	0	0	0	0	6	11	17	3	20	20	8			
IVY RAN/RAN DEL ORO	0	2	0	0	0	5	7	2	6	8	9	16	25	39	46	8						
LAKE	0	0	0	1	1	0	2	0	3	3	6	10	16	20	22	3						
MIRA COSTA	0	0	0	0	0	5	5	1	2	3	5	13	18	24	29	10						
MISSN MESALOMA ALTA	0	0	0	0	0	2	2	1	3	11	22	33	6	42	44	9						
MORRO HILLS	0	0	0	0	0	0	0	2	0	3	0	3	0	5	5	1						
NORTH VALLEY	0	2	0	0	0	1	3	1	2	1	4	5	1	8	11	3						
OCEAN HILLS	0	0	0	0	0	1	1	0	1	0	2	2	2	5	6	2						
OCEANA	0	0	0	0	0	1	1	0	0	2	5	7	0	7	8	2						
SAN LUIS REY	0	1	1	1	1	1	4	2	5	7	8	20	28	37	41	7						
SOUTH OCEANSIDE	0	1	0	1	1	3	6	0	2	2	3	6	9	12	18	4						
TOWNSITE	0	2	1	1	3	22	28	6	0	6	26	33	59	73	101	13						
TRI CITY	0	2	0	0	1	3	1	2	3	4	10	14	0	17	20	2						
UNKNOWN	0	0	0	0	0	0	0	0	0	0	0	0	0	0	0	0						
SUB-TOTAL	0	13	5	6	8	48	75	18	26	44	100	189	289	42	375	450	86					
GRAND TOTALS	0	13	5	6	8	48	75	18	26	44	100	189	289	42	375	450	86					



UCR Crimes by GeoArea

Required Parameters
 Reporting Period: Jan 2019 to Sep 2019
 Agency: OCEANSIDE

Optional Parameters
 Geographical Area: All Beats
 Group by: Agency Select by: Neighborhood

Prior Report Number: S1STA120

Neighborhood	MURDER	RAPE	RAPE (HISTORICAL)	ROBBERY--	ST/ ARM	AGGRVD	VIOLENT	RESID	NRESID	TOTAL	\$400+	--LARCENY--THEFT--	TOTAL	THEFT	CRM TL	IDX TL	CRIME	CAR	PROWL
Agency = OCEANSIDE																			
AIRPORT	0	3	2	2	2	8	15	1	2	3	23	29	52	17	72	87			30
EASTSIDE/CAPISTRANO	0	7	4	1	5	25	38	9	4	13	31	61	92	16	121	159			44
FIRE MOUNTAIN	0	2	2	3	3	12	20	5	32	37	98	155	253	22	312	332			71
GUAJOME	0	3	2	1	4	11	19	2	5	7	37	76	113	10	130	149			54
IVY RAN/RAN DEL ORO	0	9	5	7	8	23	47	14	41	55	118	171	289	50	394	441			162
LAKE	0	1	0	8	6	8	23	4	7	11	33	102	135	15	161	184			29
MIRA COSTA	0	3	3	0	3	19	25	8	5	13	54	76	130	21	164	189			74
MISSN MESALOMA ALTA	2	3	2	4	10	36	55	8	6	14	46	121	167	30	211	266			74
MORRO HILLS	0	0	0	1	0	11	12	5	0	5	13	20	33	5	43	55			19
NORTH VALLEY	0	6	3	0	1	16	23	10	2	12	27	59	86	21	119	142			47
OCEAN HILLS	0	0	0	0	1	5	6	1	0	1	11	28	39	7	47	53			20
OCEANA	0	2	2	0	1	4	7	0	0	0	15	26	41	4	45	52			19
SAN LUIS REY	0	6	3	3	12	26	47	23	13	36	82	157	239	37	312	359			100
SOUTH OCEANSIDE	0	1	0	3	6	14	24	7	8	15	32	64	96	14	125	149			30
TOWNSITE	2	18	13	9	15	96	140	35	22	57	149	226	375	46	478	618			130
TRI CITY	0	7	6	2	1	9	19	5	4	9	22	46	68	7	84	103			19
UNKNOWN	0	0	0	0	0	0	0	0	0	0	2	1	3	0	3	3			2
SUB-TOTAL	4	71	47	44	78	323	520	137	151	288	793	1,418	2,211	322	2,821	3,341			924
GRAND TOTALS	4	71	47	44	78	323	520	137	151	288	793	1,418	2,211	322	2,821	3,341			924