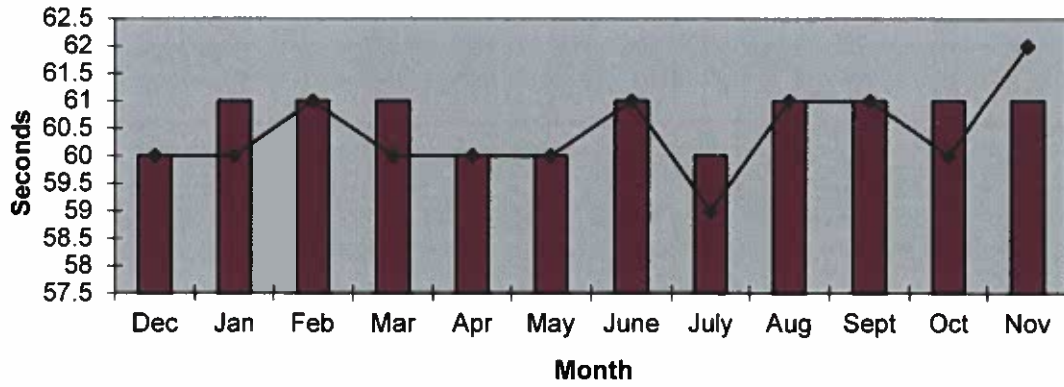
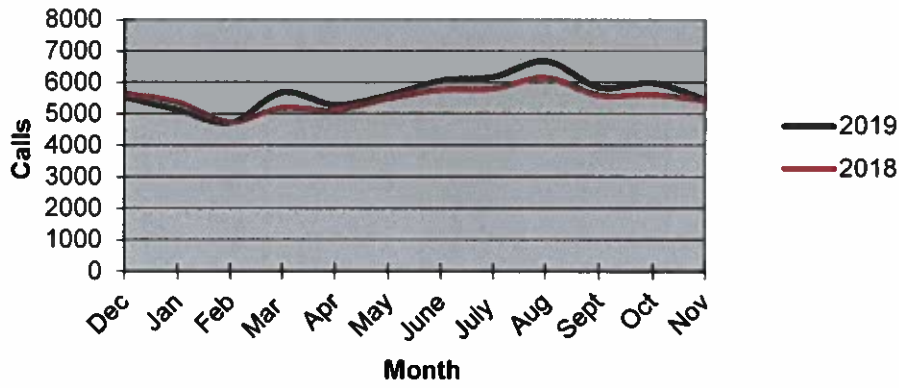


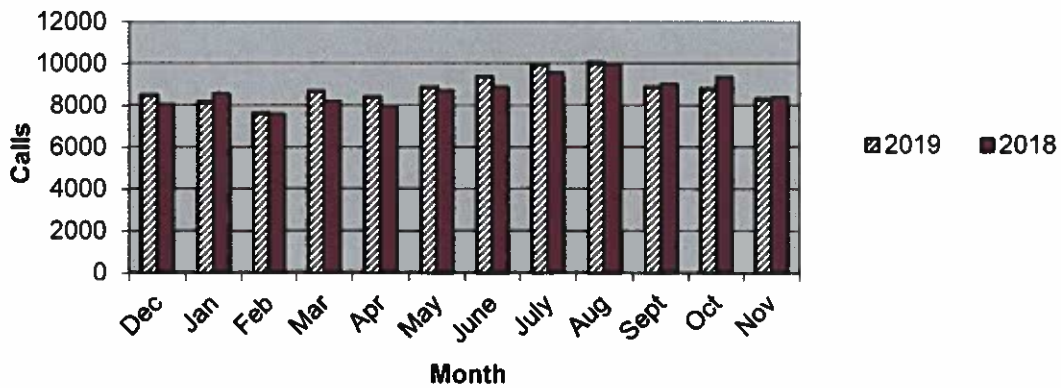
Priority 1 Dispatch Times- Police



911 Calls



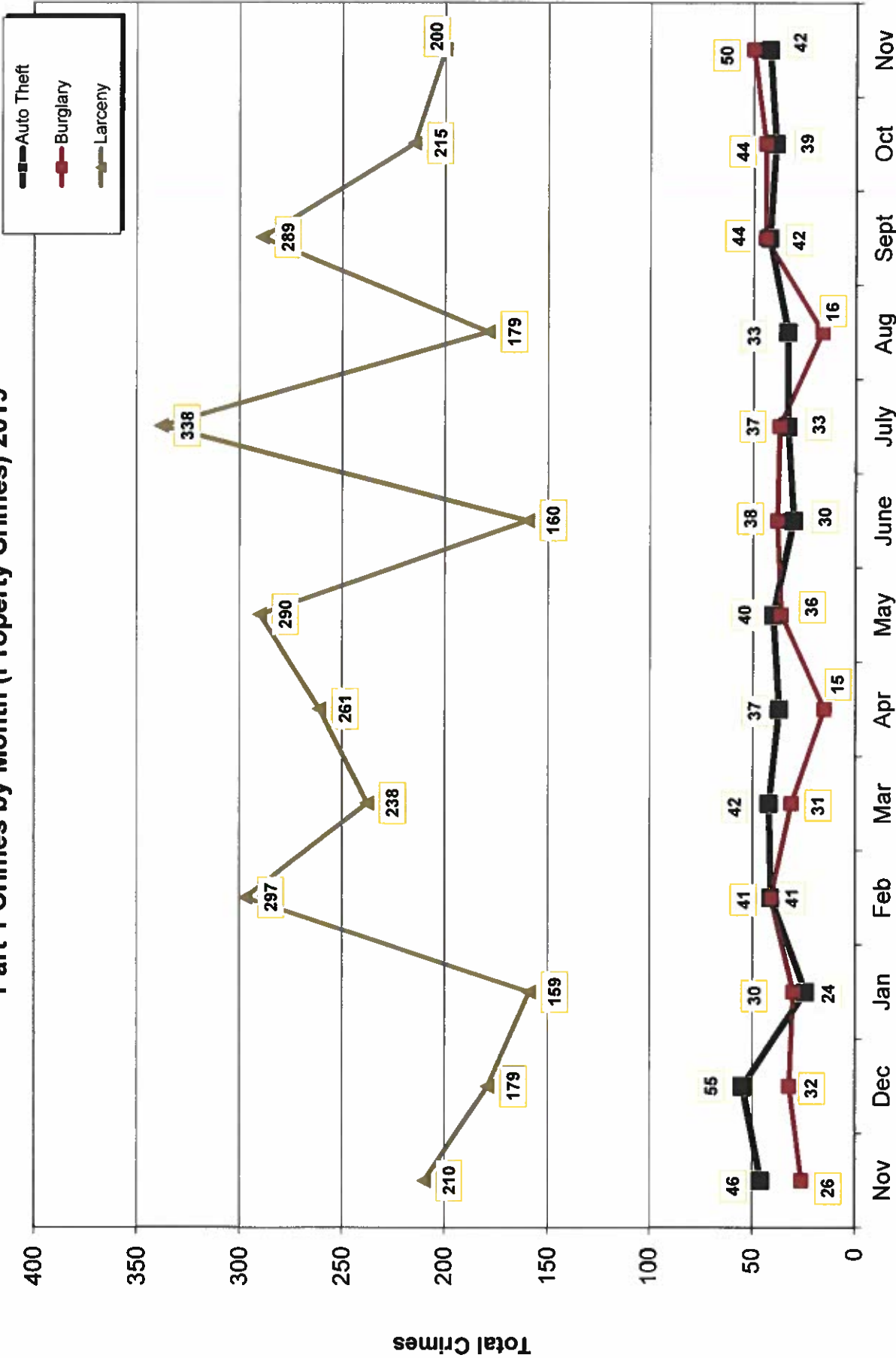
Calls for Service



**OCEANSIDE POLICE DEPARTMENT
FBI INDEX CRIMES**

		MONTHLY CASE ACTIVITY 2019												YEAR TO DATE COMPARISON			% CHANGE						
		JAN	FEB	MAR	APR	MAY	JUN	JUL	AUG	SEP	OCT	NOV	DEC	2018	2019	CHANGE							
		Actual	Cleared	Actual	Cleared	Actual	Cleared	Actual	Cleared	Actual	Cleared	Actual	Cleared	Actual	Cleared	Actual		Cleared	Actual	Cleared			
1. HOMICIDE	Actual	0	0	0	0	1	1	1	1	0	0	0	0	0	0	0	0	0	0	8	3	-5	-62.5%
	Cleared	0	0	0	0	1	1	1	0	1	0	0	0	0	0	0	0	0	0	7	4	-3	-42.9%
2. RAPE	Actual	3	8	7	7	10	8	10	5	13	11	8	8	8	8	8	8	8	8	60	90	30	50.0%
	Cleared	0	0	0	1	2	2	2	1	2	3	1	1	1	1	1	1	1	1	7	14	7	100.0%
3. ROBBERY	Actual	13	16	14	10	15	10	13	17	14	13	11	11	11	11	11	11	11	11	140	146	6	4.3%
	Cleared	2	7	3	7	4	4	4	6	3	7	4	4	4	4	4	4	4	4	37	51	14	37.8%
4. AGGR. ASSAULT	Actual	34	27	38	27	30	40	47	32	48	57	34	34	34	34	34	34	34	34	395	414	19	4.8%
	Cleared	16	12	15	15	14	14	19	18	20	24	20	20	20	20	20	20	20	20	168	187	19	11.3%
5. BURGLARY	Actual	30	41	31	15	36	38	37	16	44	44	50	50	50	50	50	50	50	50	478	382	-96	-20.1%
	Cleared	3	3	4	5	0	3	3	2	1	4	5	5	5	5	5	5	5	5	47	33	-14	-29.8%
6. LARCENY THEFT	Actual	159	297	238	261	290	160	338	179	289	215	200	200	200	200	200	200	200	200	2568	2626	58	2.3%
	Cleared	19	22	16	25	14	14	15	10	22	17	18	18	18	18	18	18	18	18	180	192	12	6.7%
7. AUTO THEFT	Actual	24	41	42	37	40	30	33	33	42	39	42	42	42	42	42	42	42	42	434	403	-31	-7.1%
	Cleared	2	5	1	2	4	2	2	2	4	1	5	5	5	5	5	5	5	5	31	30	-1	-3.2%
TOTAL INDEX CRIMES	Actual	263	430	370	357	422	287	479	283	450	378	345	345	345	345	345	345	345	345	4086	4064	-22	-0.5%
	Cleared	42	49	39	55	39	40	46	39	53	56	53	53	53	53	53	53	53	53	477	511	34	7.1%
TOTAL PERSON CRIMES	Actual	50	51	59	44	56	59	71	55	75	80	53	53	53	53	53	53	53	53	603	653	50	8.3%
	Cleared	18	19	18	23	21	21	26	25	26	34	25	25	25	25	25	25	25	25	219	256	37	16.9%
TOTAL PROPERTY CRIMES	Actual	213	379	311	313	366	228	408	228	375	298	292	292	292	292	292	292	292	292	3480	3411	-69	-2.0%
	Cleared	24	30	21	32	18	19	20	14	27	22	28	28	28	28	28	28	28	28	258	255	-3	-1.2%
ARSON	Actual	1	2	5	0	0	2	2	1	3	4	1	1	1	1	1	1	1	1	14	21	7	50.0%
Y-T-D Loss \$13416	Cleared	0	1	3	0	0	2	1	1	0	1	1	1	1	1	1	1	1	1	3	10	7	233.3%

Part 1 Crimes by Month (Property Crimes) 2019

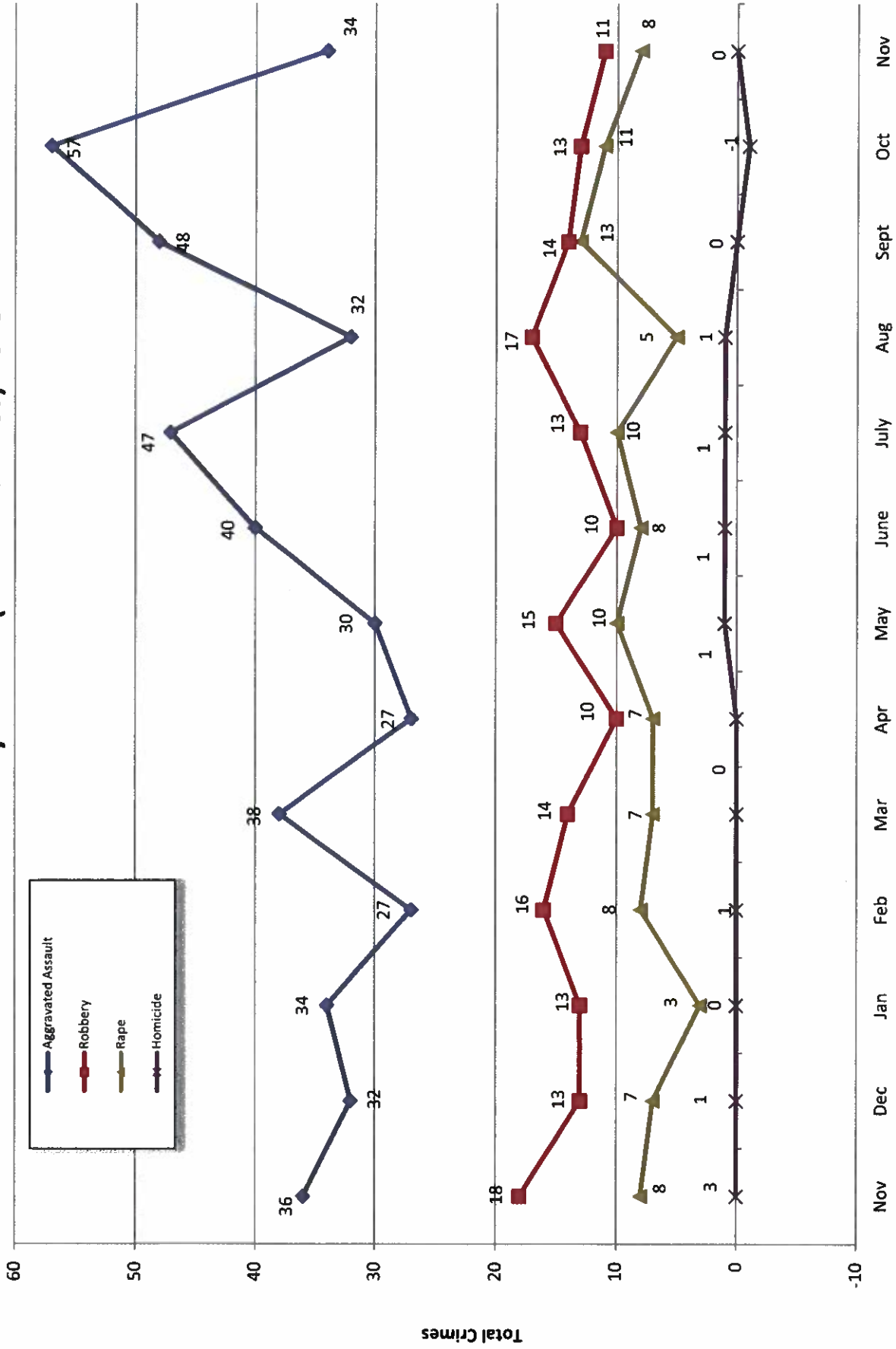


Month

- 2019 -

- 2018 -

Part 1 Crimes by Month (Violent Crimes) 2019



- 2019 -

Month

- 2018 -

Traffic Collisions November 2018 - November 2019





UCR Crimes by GeoArea

Required Parameters
Reporting Period: Nov 2019
Agency: OCEANSIDE

Optional Parameters
Geographical Area: All Beats
Group by: Agency Select by: Neighborhood

Prior Report Number: S1STA120

Neighborhood	MURDER	RAPE	RAPE (HISTORICAL)	ROBBERY--	RAPE ARMED	ST/ ARM	AGGRVD	VIOLENT	BURGLARY--	NRESID	TOTAL	\$400+	<\$400	TOTAL	THEFT	CRM TL	IDX TL	CRIME	CAR
Agency = OCEANSIDE																			
AIRPORT	0	0	0	0	0	0	0	1	0	0	1	1	1	2	3	6	7	2	
EASTSIDE/CAPISTRANO	0	0	0	0	0	0	-1	-1	2	0	2	2	5	7	2	11	10	6	
FIRE MOUNTAIN	0	0	0	0	0	0	0	1	7	8	11	29	40	-1	47	48	11		
GUAJOME	0	-1	0	0	0	0	0	0	1	0	1	2	3	5	0	6	6	0	
IVY RANIRAN DEL ORO	0	1	1	0	0	0	-1	0	12	12	8	13	21	7	40	40	12		
LAKE	0	1	1	2	2	1	1	6	2	3	2	9	11	2	16	22	3		
MIRA COSTA	0	-1	1-	0	0	0	1	0	2	2	4	3	6	2	12	12	4		
MISSN MESALOMA ALTA	0	0	0	0	2	2	5	7	0	0	0	5	11	2	18	25	9		
MORRO HILLS	0	0	0	0	0	0	-1	-1	0	0	0	1	1	2	0	2	1	0	
NORTH VALLEY	0	0	0	0	0	0	4	4	1	0	1	3	5	8	3	12	16	6	
OCEAN HILLS	0	0	0	0	0	0	0	0	3	0	3	1	1	2	1	6	6	1	
OCEANA	0	0	0	0	0	0	0	0	0	0	0	1	1	2	0	2	2	0	
SAN LUIS REY	0	3	2	0	0	0	2	5	4	1	5	6	12	6	29	34	7		
SOUTH OCEANSIDE	0	0	0	0	0	0	3	3	0	3	2	6	8	2	13	16	0		
TOWNSITE	0	5	3	0	3	3	12	20	3	3	6	13	30	43	10	59	79	15	
TRI CITY	0	0	0	0	0	0	8	8	0	1	1	3	5	8	3	12	20	3	
UNKNOWN	0	0	0	0	0	0	0	0	0	0	0	0	1	1	0	1	1	0	
SUB-TOTAL	0	8	6	2	9	9	34	63	21	29	50	64	136	200	42	292	345	79	
GRAND TOTALS	0	8	6	2	9	9	34	63	21	29	50	64	136	200	42	292	345	79	



UCR Crimes by GeoArea

Required Parameters
 Reporting Period: Jan 2019 to Nov 2019
 Agency: OCEANSIDE

Optional Parameters
 Geographical Area: All Beats
 Group by: Agency Select by: Neighborhood

Prior Report Number: S1STA120

Neighborhood	MURDER	RAPE	RAPE (HISTORICAL)	ROBBERY--	ARMED	ST/ ARM	ASSAULT	AGGRVD	VIOLENT	RESID	NRESID	TOTAL	\$400+	<\$400	TOTAL	THEFT	CRM TL	IDX TL	CRIME	CAR	
Agency = OCEANSIDE																					
AIRPORT	0	3	2	2	3	8	16	1	5	6	26	35	61	23	90	106	38				
EASTSIDE/CAPISTRANO	0	8	5	1	6	30	45	12	6	18	35	68	103	20	141	166	52				
FIRE MOUNTAIN	0	2	2	3	4	14	23	6	41	47	118	197	315	24	386	409	86				
GUAJOME	0	2	2	1	4	12	19	4	5	9	41	89	130	10	149	168	57				
IVY RANIRAN DEL ORO	0	11	7	8	8	27	54	15	61	76	136	202	338	62	476	530	185				
LAKE	0	2	1	10	9	10	31	5	9	14	40	122	162	18	194	225	34				
MIRA COSTA	0	3	3	0	5	24	32	13	9	22	61	85	146	23	191	223	84				
MISSN MESALOMA ALTA	2	3	2	5	13	47	70	10	11	21	54	142	196	35	252	322	92				
MORRO HILLS	0	1	0	1	0	11	13	6	0	6	14	22	36	6	48	61	20				
NORTH VALLEY	0	5	3	0	1	23	30	11	2	13	30	71	101	27	141	171	55				
OCEAN HILLS	0	0	0	0	1	7	8	4	0	4	12	31	43	8	55	63	22				
OCEANA	0	2	2	0	1	4	7	1	0	1	17	28	45	4	50	57	20				
SAN LUIS REY	0	13	9	3	12	33	61	30	13	43	99	186	285	46	374	435	118				
SOUTH OCEANSIDE	0	1	0	3	6	22	32	12	12	24	38	73	111	19	154	186	31				
TOWNSITE	1	26	19	10	22	118	177	40	28	68	182	285	467	65	600	777	163				
TRI CITY	0	7	6	3	1	24	35	5	5	10	29	54	83	12	105	140	25				
UNKNOWN	0	0	0	0	0	0	0	0	0	0	2	2	4	1	5	5	2				
SUB-TOTAL	3	90	63	50	96	414	653	175	207	382	934	1,692	2,626	403	3,411	4,054	1,084				
GRAND TOTALS	3	90	63	50	96	414	653	175	207	382	934	1,692	2,626	403	3,411	4,054	1,084				