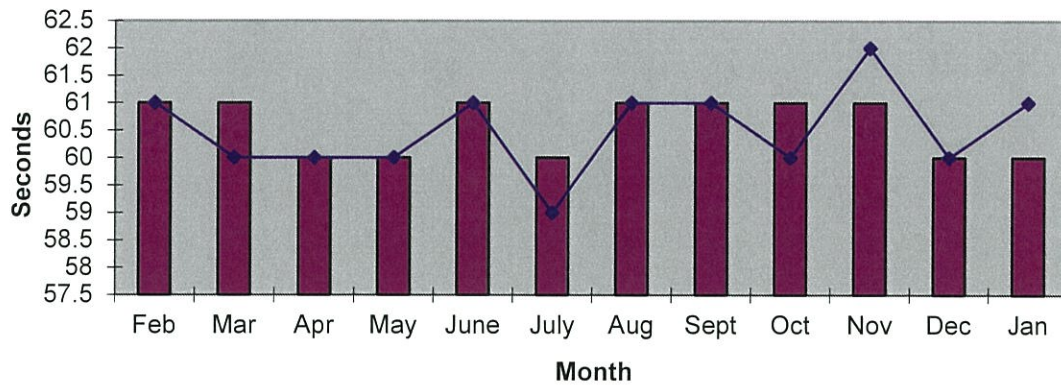
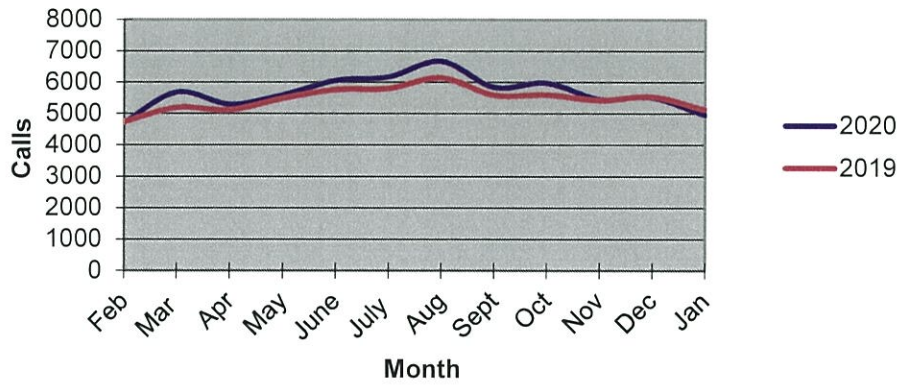


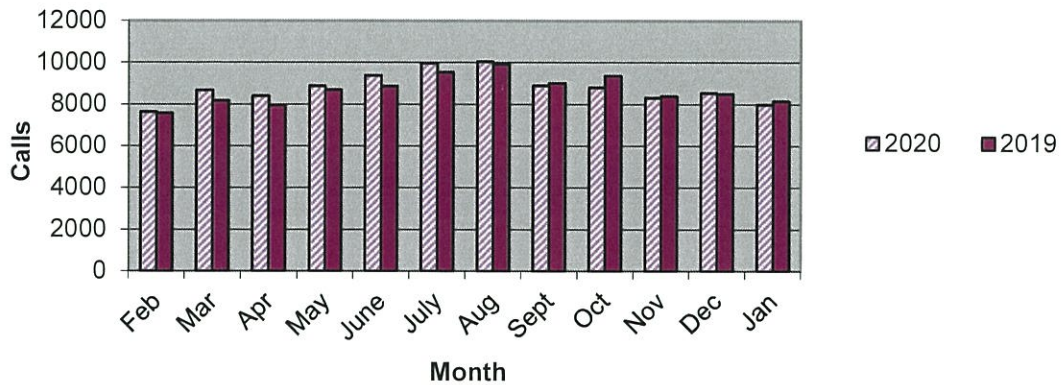
Priority 1 Dispatch Times- Police



911 Calls



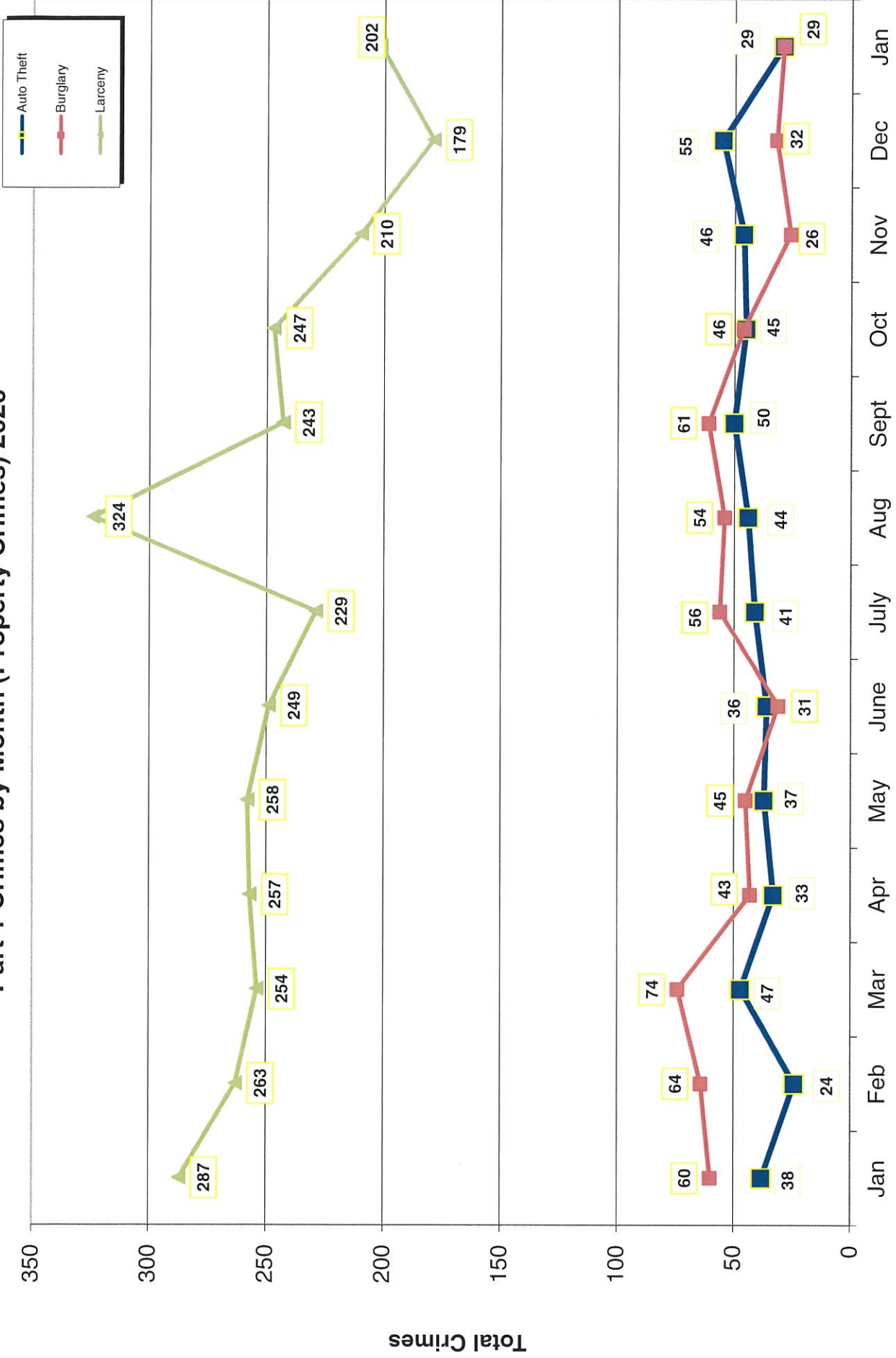
Calls for Service



**OCEANSIDE POLICE DEPARTMENT
FBI INDEX CRIMES**

		MONTHLY CASE ACTIVITY 2020												YEAR TO DATE COMPARISON		% CHANGE		
		JAN	FEB	MAR	APR	MAY	JUN	JUL	AUG	SEP	OCT	NOV	DEC	2019	2020 CHANGE			
1. HOMICIDE	Actual Cleared	2													0	2	2	200.0%
		2													0	2	2	200.0%
2. RAPE	Actual Cleared	6													3	6	3	100.0%
		0													0	0	0	0.0%
3. ROBBERY	Actual Cleared	10													13	10	-3	-23.1%
		5													2	5	3	150.0%
4. AGGR. ASSAULT	Actual Cleared	20													34	20	-14	-41.2%
		13													16	13	-3	-18.8%
5. BURGLARY	Actual Cleared	29													30	29	-1	-3.3%
		5													3	5	2	66.7%
6. LARCENY THEFT	Actual Cleared	202													159	202	43	27.0%
		22													19	22	3	15.8%
7. AUTO THEFT	Actual Cleared	29													24	29	5	20.8%
		2													2	2	0	200.0%
TOTAL INDEX CRIMES	Actual Cleared	298													263	298	35	13.3%
		49													42	49	7	16.7%
TOTAL PERSON CRIMES	Actual Cleared	38													50	38	-12	-24.0%
		20													18	20	2	11.1%
TOTAL PROPERTY CRIMES	Actual Cleared	260													213	260	47	22.1%
		29													24	29	5	20.8%
ARSON	Actual	4													1	4	3	300.0%
Y-T-D Loss \$3301.00	Cleared	0													0	0	0	0.0%

Part 1 Crimes by Month (Property Crimes) 2020

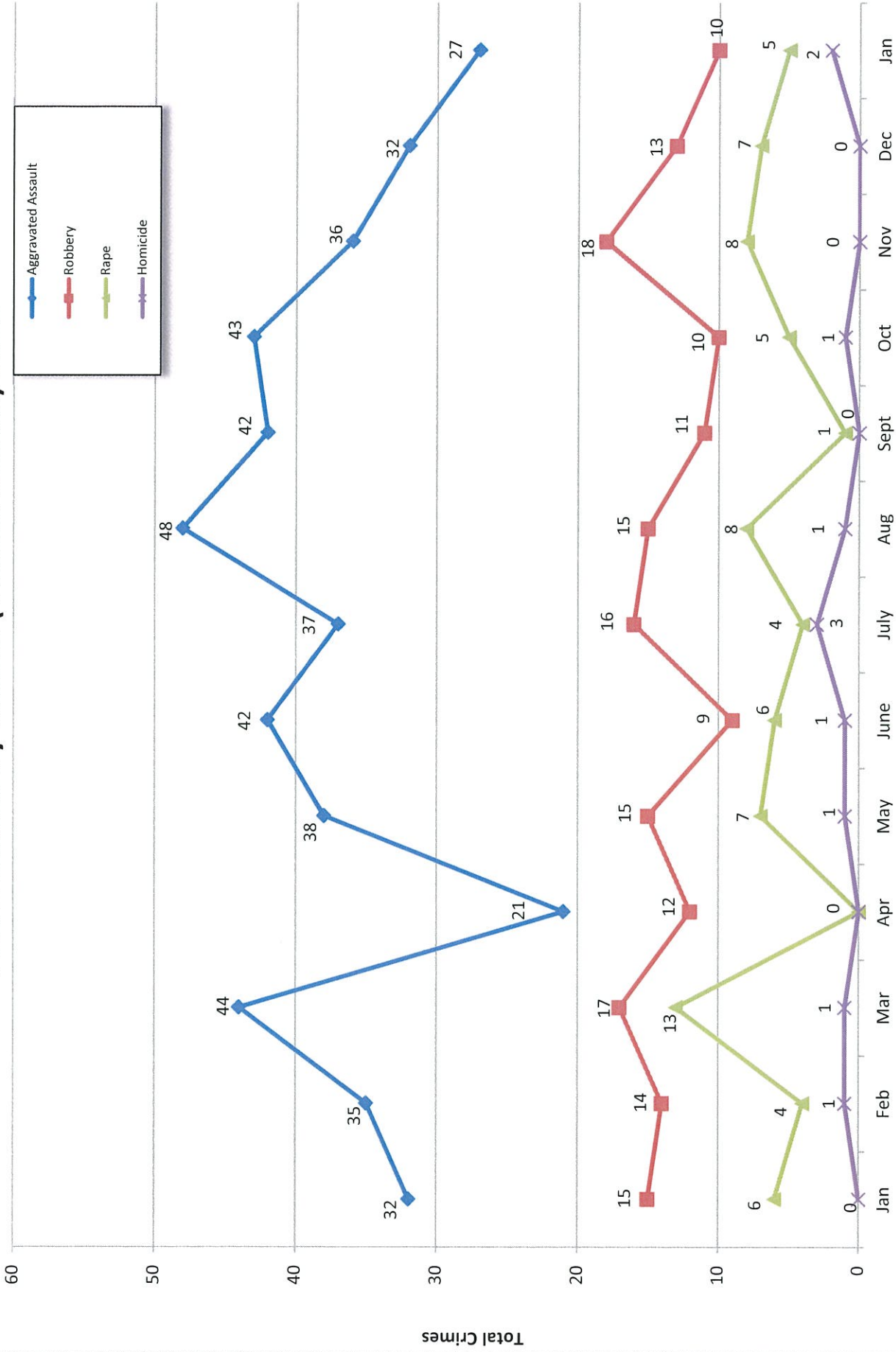


Month

- 2019 -

- 2020 -

Part 1 Crimes by Month (Violent Crimes) 2020



- 2019 -

Month

- 2020 -



UCR Crimes by GeoArea

Required Parameters
 Reporting Period: Jan 2020
 Agency: OCEANSIDE

Optional Parameters
 Geographical Area: All Beats
 Group by: Agency **Select by: Neighborhood**

Prior Report Number: S1STA120

Neighborhood	MURDER	RAPE	RAPE (HISTORICAL)	ROBBERY---	AGGRVD	VIOLENT	BURGLARY---	---LARCENY-THEFT---	M.VEH	PROPERTY	CRIME	CAR						
				ARMED	ST/ ARM	ASSAULT	CRM TL	RESID	NRESID	TOTAL	\$400+	<\$400	TOTAL	THEFT	CRM TL	IDX TL	PROWL	
Agency = OCEANSIDE																		
AIRPORT	0	0	0	0	0	1	1	0	0	0	1	2	3	2	5	6	2	2
EASTSIDE/CAPISTRANO	0	1	0	1	0	3	5	1	0	1	4	13	17	6	24	29	8	8
FIRE MOUNTAIN	0	0	0	1	0	-1	0	1	4	5	11	20	31	2	38	38	6	6
GUAJOME	0	0	0	0	0	0	0	0	0	0	4	0	4	3	7	7	2	2
IVY RAN/RAN DEL ORO	0	-1	1	0	2	0	1	4	3	7	8	19	27	5	39	40	10	10
LAKE	0	0	0	0	0	1	1	1	1	2	6	14	20	6	28	29	7	7
MIRA COSTA	0	0	0	0	1	2	3	0	0	0	4	8	12	2	14	17	3	3
MISSN MESA/LOMA ALTA	0	1	1	0	1	3	5	4	3	7	5	14	19	2	28	33	4	4
MORRO HILLS	0	0	0	0	0	2	2	0	0	0	0	3	3	2	5	7	2	2
NORTH VALLEY	0	0	0	0	0	1	1	1	1	2	0	1	1	3	6	7	0	0
OCEAN HILLS	0	0	0	0	0	0	0	1	1	2	2	2	4	0	6	6	2	2
OCEANA	0	0	0	0	0	3	3	0	0	0	2	2	4	1	5	8	3	3
SAN LUIS REY	1	1	1	0	0	5	7	2	0	2	9	9	18	3	23	30	7	7
SOUTH OCEANSIDE	0	2	2	1	1	0	4	0	0	0	1	4	5	2	7	11	1	1
TOWNSITE	1	1	1	0	0	7	9	0	1	1	16	12	28	7	36	45	7	7
TRI CITY	0	0	0	0	2	0	2	0	2	2	3	4	7	3	12	14	2	2
UNKNOWN	0	0	0	0	0	0	0	0	0	0	0	0	0	0	0	0	0	0
SUB-TOTAL	2	5	4	3	7	27	44	15	16	31	76	127	203	49	283	327	66	66
GRAND TOTALS	2	5	4	3	7	27	44	15	16	31	76	127	203	49	283	327	66	66