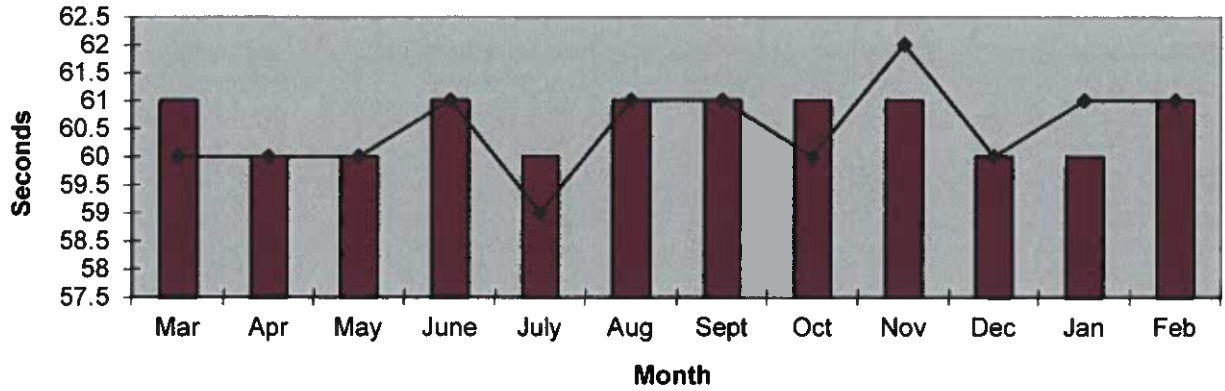
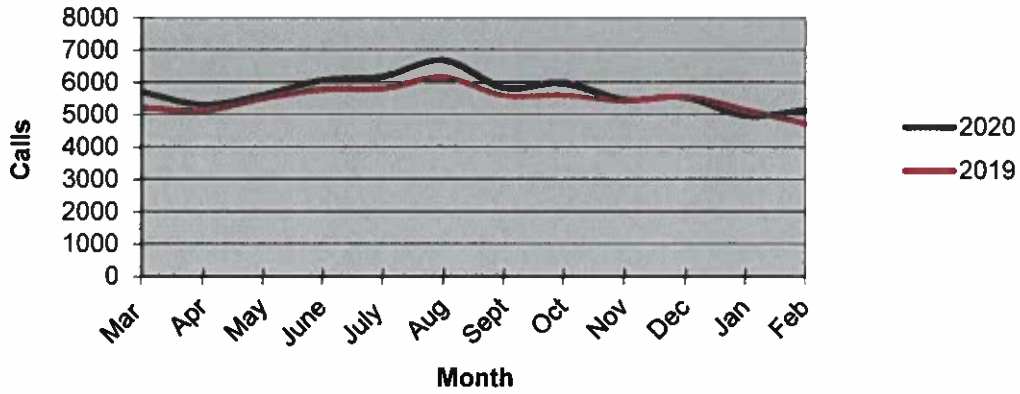


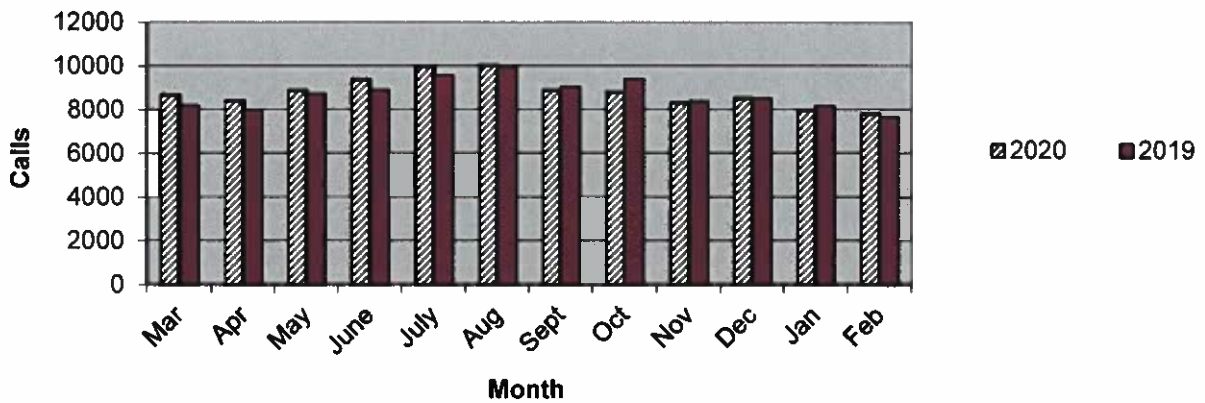
**Priority 1 Dispatch Times- Police**



**911 Calls**



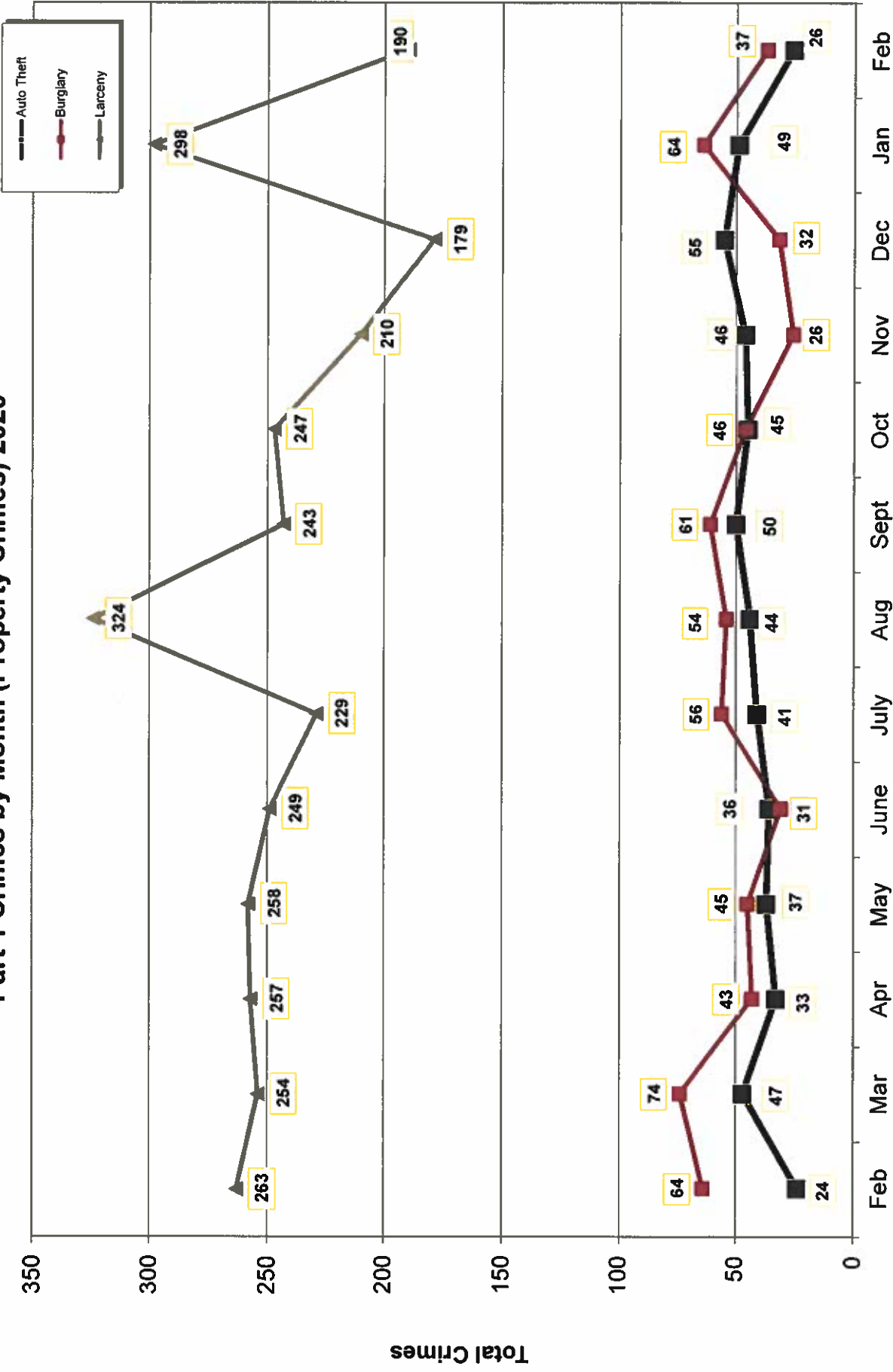
**Calls for Service**



**OCEANSIDE POLICE DEPARTMENT  
FBI INDEX CRIMES**

	MONTHLY CASE ACTIVITY 2020													YEAR TO DATE		% CHANGE
														COMPARISON		
	JAN	FEB	MAR	APR	MAY	JUN	JUL	AUG	SEP	OCT	NOV	DEC	2019	2020	CHANGE	
1. HOMICIDE	2	0											0	2	2	100.0%
	Cleared												0	2	2	0.0%
2. RAPE	6	2											11	8	-3	-27.3%
	Cleared												0	0	0	0.0%
3. ROBBERY	10	8											29	18	-11	-37.9%
	Cleared												9	7	-2	-22.2%
4. AGGR. ASSAULT	27	38											61	65	4	6.6%
	Cleared												28	32	4	14.3%
5. BURGLARY	31	37											71	68	-3	-4.2%
	Cleared												6	8	2	33.3%
6. LARCENY THEFT	202	190											456	392	-64	-14.0%
	Cleared												41	31	-10	-24.4%
7. AUTO THEFT	29	26											65	55	-10	-15.4%
	Cleared												7	5	-2	-28.6%
TOTAL INDEX CRIMES	307	301											693	608	-85	-12.3%
	Cleared												91	85	-6	-6.6%
TOTAL PERSON CRIMES	45	48											101	93	-8	-7.9%
	Cleared												37	41	4	10.8%
TOTAL PROPERTY CRIMES	262	253											592	515	-77	-13.0%
	Cleared												54	44	-10	-18.5%
ARSON	4	4											3	8	5	166.7%
Y-T-D Loss \$7538.00	0	2											1	2	1	0.0%

# Part 1 Crimes by Month (Property Crimes) 2020

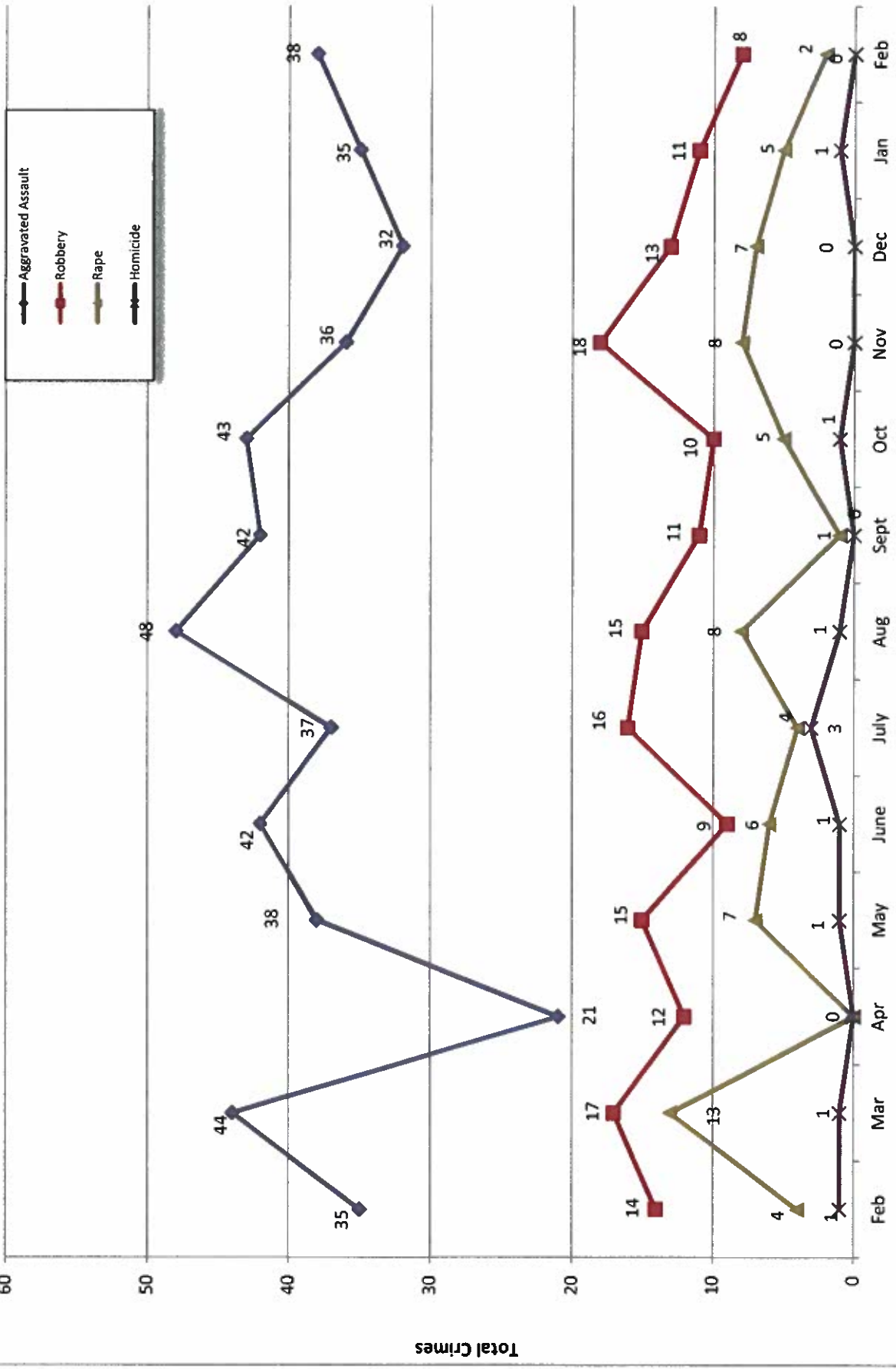


Month

- 2020 -

- 2019 -

# Part 1 Crimes by Month (Violent Crimes) 2020



- 2020 -

Month

- 2019 -

Total Crimes



# UCR Crimes by GeoArea

**Required Parameters**  
 Reporting Period: Feb 2020  
 Agency: OCEANSIDE

**Optional Parameters**  
 Geographical Area: All Beats  
 Group by: Agency Select by: Neighborhood

Prior Report Number: S1STA120

Neighborhood	MURDER	RAPE (HISTORICAL)	RAPE (HISTORICAL)	ROBBERY— ARMED	ST/ ARM	ASSAULT	VIOLENT	AGGRVD	BURGLARY	—LARCENY—THEFT—	TOTAL	RESID	NRESID	TOTAL	\$400+	<\$400	TOTAL	THEFT	CRM TL	PROPERTY	CRIME	CAR	
Agency = OCEANSIDE																							
AIRPORT	0	0	0	0	0	2	2	0	0	0	0	0	0	0	2	1	3	-1	2			4	0
EASTSIDE/CAPISTRANO	0	1	0	1	0	4	6	1	-1	0	3	1	0	0	3	2	5	3	8			14	2
FIRE MOUNTAIN	0	0	0	0	1	0	1	1	3	4	11	3	0	4	25	36	2	2	42			43	10
GUAJOME	0	0	0	0	0	2	2	3	0	3	2	3	0	3	5	7	1	1	11			13	2
IVY RAN/RAN DEL ORO	0	0	0	0	0	3	3	1	6	7	11	1	6	7	15	26	4	4	37			40	12
LAKE	0	0	0	1	0	3	4	1	0	1	4	1	0	1	12	16	3	3	20			24	7
MIRA COSTA	0	1	0	0	0	1	2	1	0	1	8	1	0	1	8	16	2	2	19			21	8
MISSN MESALOMA ALTA	0	0	0	0	0	3	3	7	1	8	8	1	7	1	13	21	2	2	31			34	8
MORRO HILLS	0	0	0	0	0	1	1	0	0	0	1	0	0	0	1	2	0	0	2			3	1
NORTH VALLEY	0	0	0	0	1	2	3	2	0	2	-1	2	0	2	1	1	0	0	3			6	2
OCEAN HILLS	0	0	0	0	0	1	1	0	0	0	1	0	0	0	2	3	0	0	3			4	1
OCEANA	0	0	0	0	0	0	0	0	0	0	1	0	0	0	0	1	0	0	1			1	0
SAN LUIS REY	0	0	0	0	0	3	3	7	0	7	6	3	7	0	6	12	4	4	23			26	4
SOUTH OCEANSIDE	0	0	0	0	0	0	0	0	1	1	4	0	0	1	4	8	2	2	11			11	3
TOWNSITE	0	0	0	2	2	13	17	1	2	3	8	1	2	3	19	27	4	4	34			51	13
TRI CITY	0	0	0	0	0	0	0	0	0	0	4	0	0	0	2	6	0	0	6			6	4
UNKNOWN	0	0	0	0	0	0	0	0	0	0	0	0	0	0	0	0	0	0	0			0	0
SUB-TOTAL	0	2	1	4	4	38	48	25	12	37	73	117	190	26	263	301	26	263	301			301	77
GRAND TOTALS	0	2	1	4	4	38	48	25	12	37	73	117	190	26	263	301	26	263	301			301	77





# UCR Crimes by GeoArea

Required Parameters  
 Reporting Period: Jan 2020 to Feb 2020  
 Agency: OCEANSIDE

Optional Parameters  
 Geographical Area: All Beats  
 Group by: Agency Select by: Neighborhood

Prior Report Number: S1STA120

Neighborhood	MURDER	RAPE	RAPE (HISTORICAL)	ROBBERY--	AGGRVD	VIOLENT	BURGLARY	TOTAL	\$400+	<\$400	TOTAL	THEFT	CRM TL	IDX TL	CRIME	CAR
				ARMED	ST/ ARM	CRM TL	NRESID	TOTAL								
Agency = OCEANSIDE																
AIRPORT	0	0	0	0	0	3	0	0	3	3	6	-2	4	7	2	
EASTSIDE/CAPISTRANO	0	2	0	2	0	7	2	1	7	15	22	9	32	43	10	
FIRE MOUNTAIN	0	0	0	1	1	-1	2	9	22	45	67	3	79	80	16	
GUAJOME	0	0	0	0	0	2	3	3	6	5	11	3	17	19	4	
IVY RAN/RAN DEL ORO	0	0	0	0	2	3	5	14	19	34	53	9	76	81	22	
LAKE	0	0	0	1	0	4	2	1	3	26	36	8	47	52	14	
MIRA COSTA	0	1	1	0	1	3	1	0	1	16	28	3	32	37	11	
MISSN MESALOMA ALTA	0	1	1	0	1	6	11	4	13	27	40	3	58	66	12	
MORRO HILLS	0	0	0	0	0	3	0	0	1	4	5	2	7	10	3	
NORTH VALLEY	0	0	0	0	1	3	1	4	-1	3	2	2	8	12	2	
OCEAN HILLS	0	0	0	0	0	1	1	2	3	4	7	0	9	10	3	
OCEANA	0	0	0	0	0	3	0	0	3	2	5	1	6	9	3	
SAN LUIS REY	1	1	1	0	0	8	9	9	14	15	29	6	44	54	11	
SOUTH OCEANSIDE	0	2	2	1	1	0	0	1	5	8	13	4	18	22	4	
TOWNSITE	1	1	1	2	2	20	1	3	24	31	55	8	67	93	20	
TRI CITY	0	0	0	0	2	0	0	2	7	6	13	3	18	20	6	
UNKNOWN	0	0	0	0	0	0	0	0	0	0	0	0	0	0	0	
<b>SUB-TOTAL</b>	<b>2</b>	<b>8</b>	<b>6</b>	<b>7</b>	<b>11</b>	<b>65</b>	<b>40</b>	<b>68</b>	<b>148</b>	<b>244</b>	<b>392</b>	<b>62</b>	<b>572</b>	<b>615</b>	<b>143</b>	
<b>GRAND TOTALS</b>	<b>2</b>	<b>8</b>	<b>6</b>	<b>7</b>	<b>11</b>	<b>65</b>	<b>40</b>	<b>68</b>	<b>148</b>	<b>244</b>	<b>392</b>	<b>62</b>	<b>572</b>	<b>615</b>	<b>143</b>	