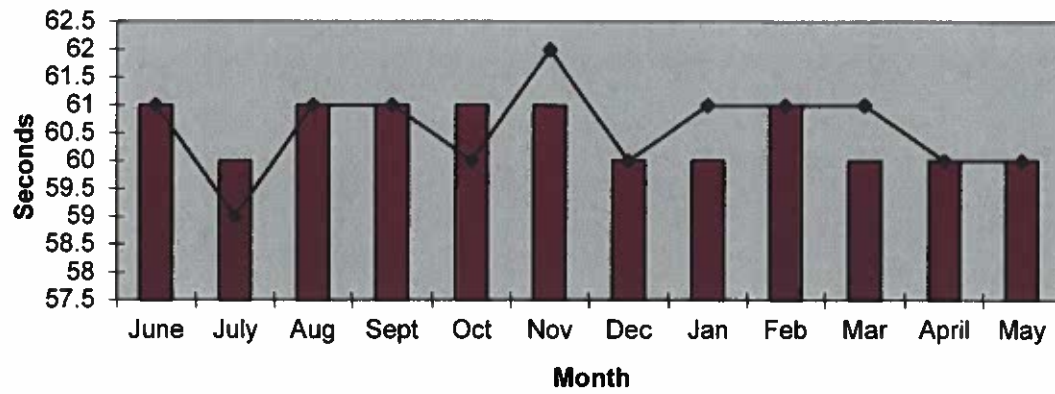
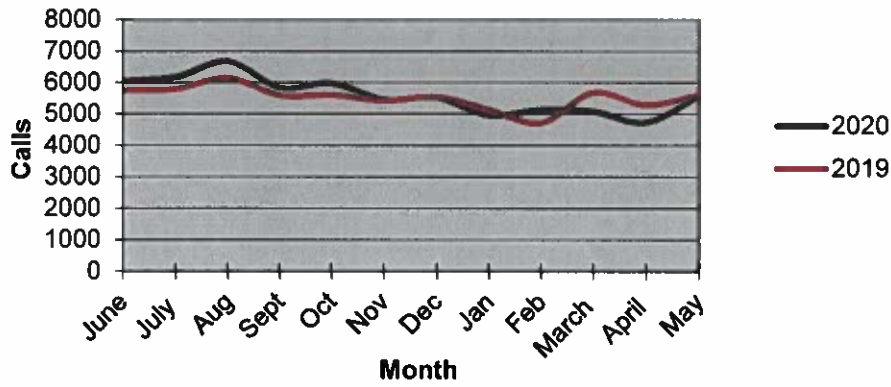


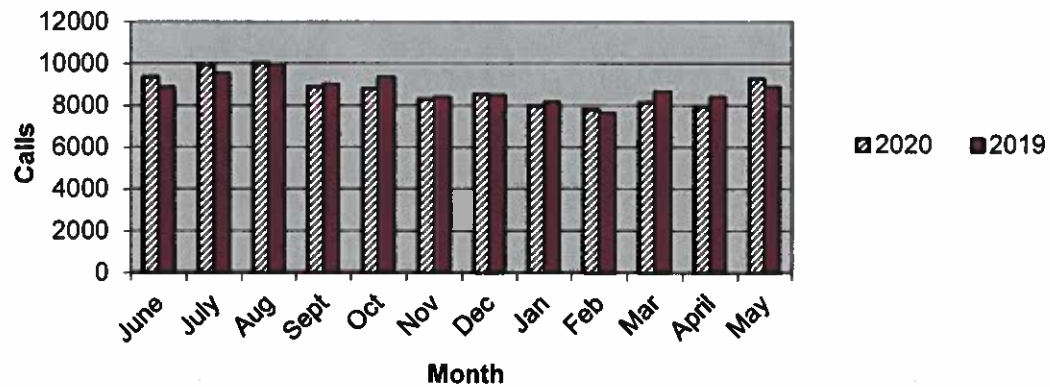
### Priority 1 Dispatch Times- Police



### 911 Calls



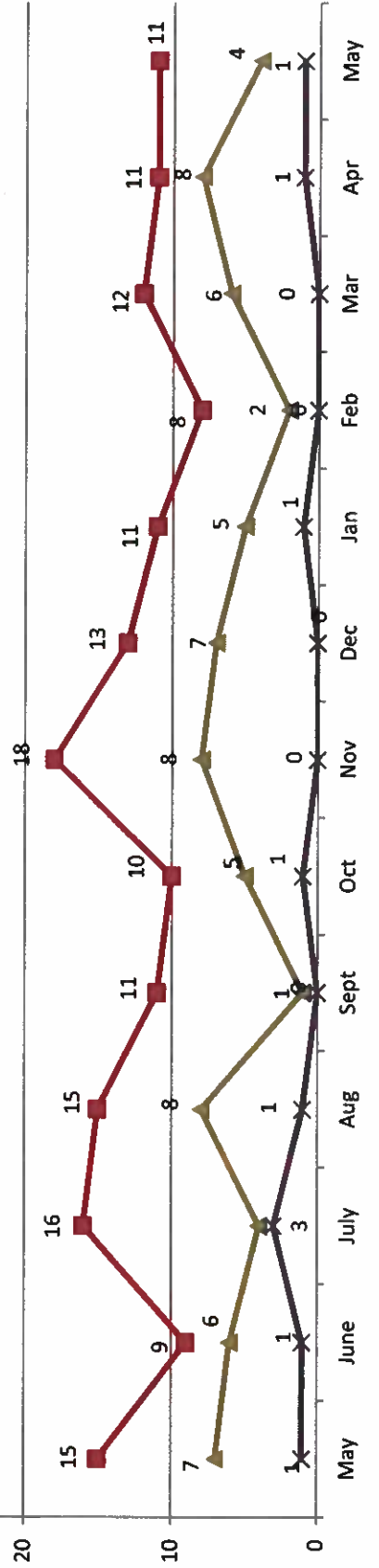
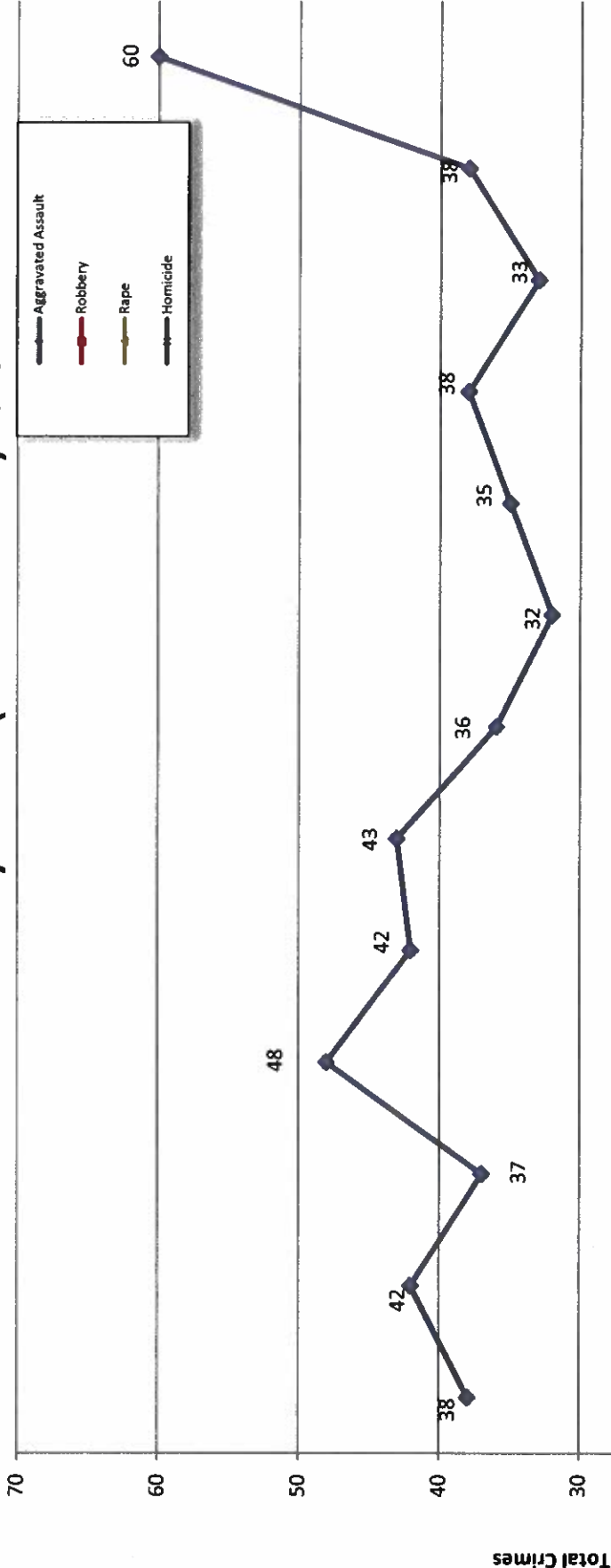
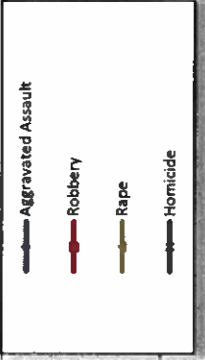
### Calls for Service



**OCEANSIDE POLICE DEPARTMENT  
FBI INDEX CRIMES**

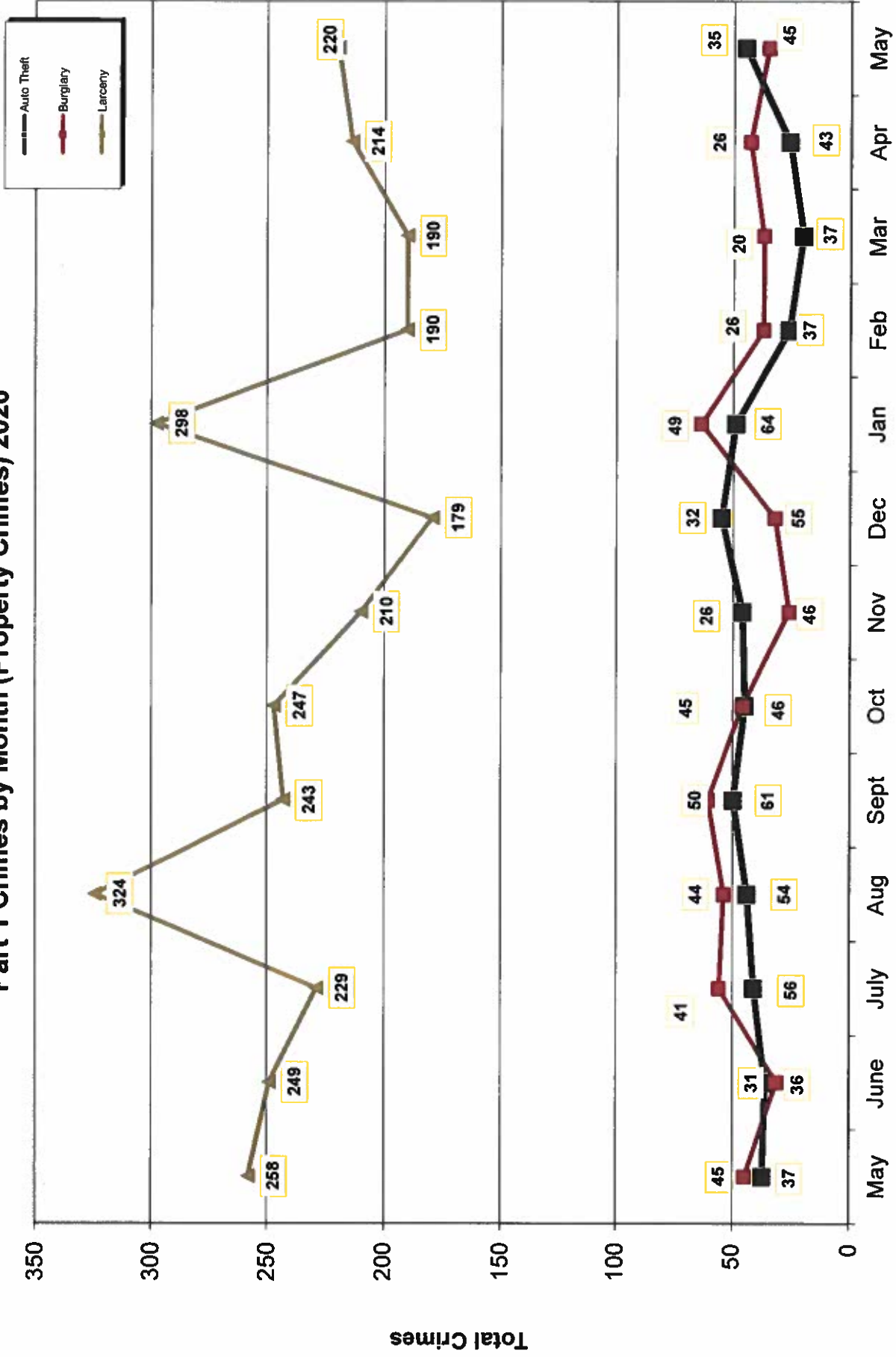
	MONTHLY CASE ACTIVITY 2020												YEAR TO DATE COMPARISON		% CHANGE	
	JAN	FEB	MAR	APR	MAY	JUN	JUL	AUG	SEP	OCT	NOV	DEC	2019	2020 CHANGE		
	1. HOMICIDE	2	0	0	1	1	1							1		4
	2	0	0	1	1								1	4	3	300.0%
2. RAPE	6	2	6	8	4								35	26	-9	-25.7%
	0	0	0	0	0								3	0	-3	-300.0%
3. ROBBERY	10	8	12	11	11								68	52	-16	-23.5%
	5	2	6	4	2								23	19	-4	-17.4%
4. AGGR. ASSAULT	27	38	33	38	60								156	196	40	25.6%
	15	17	14	14	28								72	88	16	22.2%
5. BURGLARY	31	37	37	43	34								153	182	29	19.0%
	5	3	3	6	9								15	26	11	73.3%
6. LARCENY THEFT	202	190	190	214	220								1245	1016	-229	-18.4%
	22	9	15	11	16								96	73	-23	-24.0%
7. AUTO THEFT	29	26	20	26	45								184	146	-38	-20.7%
	2	3	3	0	2								14	10	-4	-28.6%
TOTAL INDEX CRIMES	307	301	298	341	375								1842	1622	-220	-11.9%
	51	34	41	36	58								224	220	-4	-1.8%
TOTAL PERSON CRIMES	45	48	51	58	76								260	278	18	6.9%
	22	19	20	19	31								99	111	12	12.1%
TOTAL PROPERTY CRIMES	262	253	247	283	299								1582	1344	-238	-15.0%
	29	15	21	17	27								125	109	-16	-12.8%
ARSON	4	4	2	8	2								8	20	12	150.0%
Y-T-D Loss \$103,443	0	2	1	6	0								4	9	5	125.0%

# Part 1 Crimes by Month (Violent Crimes) 2020



- 2019 - Month - 2020 -

# Part 1 Crimes by Month (Property Crimes) 2020



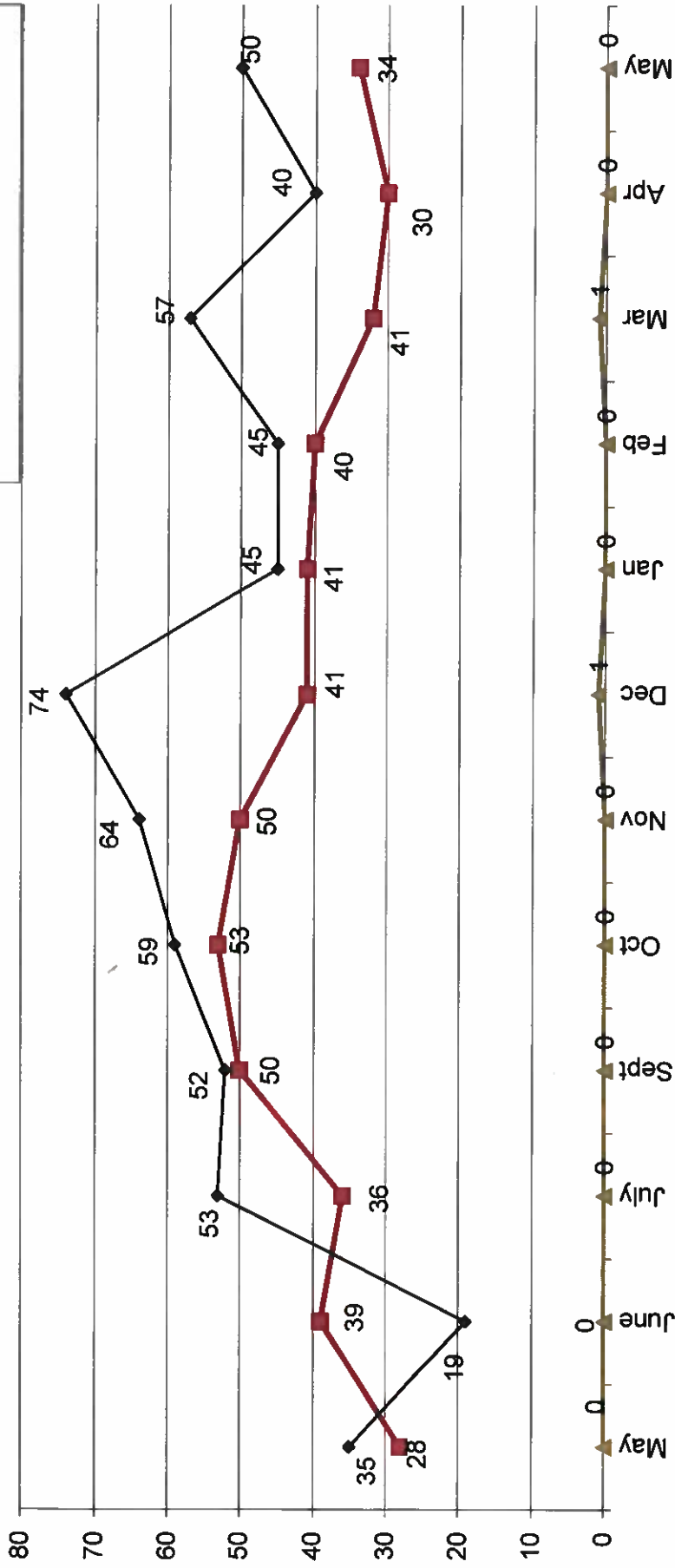
Month

- 2020 -

- 2019 -

### Traffic Collisions 2019 - 2020

Property Damage Only Injury Fatalities



-2019-

-2020-



# UCR Crimes by GeoArea

**Required Parameters**  
 Reporting Period: May 2020  
 Agency: OCEANSIDE

**Optional Parameters**  
 Geographical Area: All Beats  
 Group by: Agency Select by: Neighborhood

Prior Report Number: S1STA120

Neighborhood	MURDER	RAPE (HISTORICAL)	RAPE (HISTORICAL)	ROBBERY--	AGGRVD	VIOLENT	---BURGLARY---	---LARCENY-THEFT---	M.VEH	PROPERTY	CRIME	CAR					
			ARMED	ST/ ARM	ASSAULT	CRM TL	RESID	NRESID	TOTAL	\$400+	<\$400	TOTAL	THEFT	CRM TL	IDX TL	PROWL	
Agency = OCEANSIDE																	
AIRPORT	0	0	0	0	0	2	2	0	0	0	3	1	4	2	6	8	2
EASTSIDE/CAPISTRANO	0	0	0	0	0	12	12	1	1	2	2	9	11	2	15	27	6
FIRE MOUNTAIN	0	0	0	0	0	2	2	0	7	7	5	11	16	1	24	26	5
GUAJOME	0	0	0	0	0	1	1	0	0	0	2	17	19	-1	18	19	2
IVY RAN/RAN DEL ORO	0	0	0	0	0	5	5	6	2	8	11	18	29	6	43	48	18
LAKE	0	0	0	1	1	1	3	0	0	0	2	7	9	6	15	18	5
MIRA COSTA	0	1	0	0	0	2	3	0	0	0	3	10	13	3	16	19	8
MISSN MESA/LOMA ALTA	1	0	0	1	10	13	1	0	1	8	12	20	20	7	28	41	8
MORRO HILLS	0	0	0	0	0	0	0	0	0	1	2	3	3	1	4	4	1
NORTH VALLEY	0	0	0	1	4	5	2	2	4	5	4	9	9	3	16	21	4
OCEAN HILLS	0	0	0	0	0	0	1	1	2	3	0	3	3	1	6	6	2
OCEANA	0	0	0	0	0	0	0	0	0	0	0	1	1	0	1	1	1
SAN LUIS REY	0	0	0	0	4	4	0	0	1	7	15	22	22	4	27	31	7
SOUTH OCEANSIDE	0	0	0	1	2	3	0	2	2	8	9	17	17	1	20	23	7
TOWNSITE	0	1	1	3	9	14	4	3	7	14	21	35	35	4	46	60	10
TRI CITY	0	2	2	0	6	9	1	0	1	3	6	9	9	5	15	24	6
UNKNOWN	0	0	0	0	0	0	0	0	0	0	0	0	0	0	0	0	0
SUB-TOTAL	1	4	3	7	4	60	76	16	19	35	77	143	220	45	300	376	92
GRAND TOTALS	1	4	3	7	4	60	76	16	19	35	77	143	220	45	300	376	92



# UCR Crimes by GeoArea

Required Parameters  
 Reporting Period: Jan 2020 to May 2020  
 Agency: OCEANSIDE

Optional Parameters  
 Geographical Area: All Beats  
 Group by: Agency Select by: Neighborhood

Prior Report Number: S1STA120

Neighborhood	MURDER	RAPE (HISTORICAL)	ROBBERY— RAPE (HISTORICAL)	ARMED	ST/ ARM	ASSAULT	VIOLENT	AGGRVD	BURGLARY—	RESID	NRESID	TOTAL	\$400+	<\$400	TOTAL	THEFT	M.VEH	PROPERTY	CRIME	CAR
Agency = OCEANSIDE																				
AIRPORT	0	0	0	1	1	8	10	0	0	0	0	0	9	6	15	0	15	0	25	4
EASTSIDE/CAPISTRANO	0	2	0	3	0	21	26	4	0	4	0	4	14	30	44	14	62	88	21	
FIRE MOUNTAIN	0	0	0	2	2	8	12	3	22	25	0	25	41	99	140	6	171	183	39	
GUAJOME	0	1	1	2	0	8	11	4	0	4	0	4	24	38	62	5	71	82	15	
IVY RAN/RAN DEL ORO	0	1	1	3	2	13	19	16	19	35	19	35	49	89	138	23	196	215	77	
LAKE	0	1	0	3	1	7	12	5	1	6	1	6	15	49	64	15	85	97	26	
MIRA COSTA	0	3	2	0	1	8	12	3	6	9	6	9	25	45	70	10	89	101	39	
MISSN MESALOMA ALTA	1	2	1	2	4	22	31	15	8	23	8	23	33	70	103	11	137	168	46	
MORRO HILLS	0	0	0	0	0	3	3	2	1	3	2	3	2	11	13	4	20	23	7	
NORTH VALLEY	0	0	0	1	2	12	15	7	3	10	3	10	10	15	25	6	41	56	15	
OCEAN HILLS	0	0	0	0	0	1	1	2	2	4	2	4	6	6	12	1	17	18	7	
OCEANA	0	0	0	0	0	4	4	2	0	2	0	2	7	5	12	1	15	19	7	
SAN LUIS REY	1	5	4	2	3	19	30	22	2	24	2	24	28	48	76	19	119	149	27	
SOUTH OCEANSIDE	0	2	2	2	2	5	11	3	6	9	3	9	21	32	53	8	70	81	20	
TOWNSITE	2	6	5	5	4	48	66	12	10	22	10	22	57	90	147	20	189	255	57	
TRI CITY	0	3	3	1	3	8	15	1	2	3	2	3	15	26	41	10	54	69	22	
UNKNOWN	0	0	0	0	0	0	0	0	0	0	0	0	1	0	1	0	1	1	1	
SUB-TOTAL	4	26	19	27	25	196	278	101	82	183	82	183	367	659	1,016	163	1,352	1,630	430	
GRAND TOTALS	4	26	19	27	25	196	278	101	82	183	82	183	367	659	1,016	163	1,352	1,630	430	