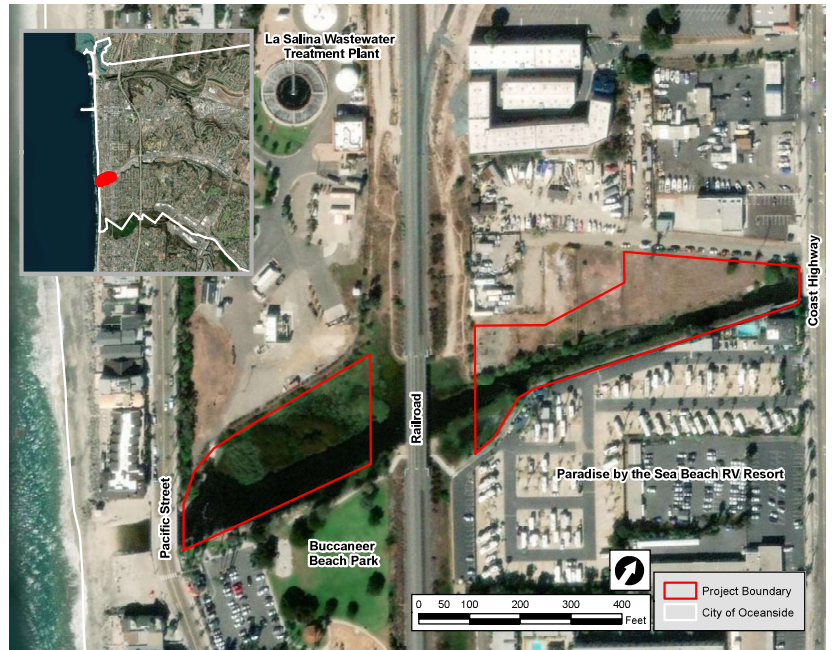


Loma Alta Slough Wetlands Enhancement Project

Project overview



The City of Oceanside is developing a wetland enhancement design for the Loma Alta Slough located between Coast Highway and Pacific Street. The purpose of the project is to expand coastal wetland habitat and improve public access through trails and educational signage. The project will provide multiple benefits, including new coastal wildlife habitat, improved water quality, climate change resiliency, and recreational opportunities.

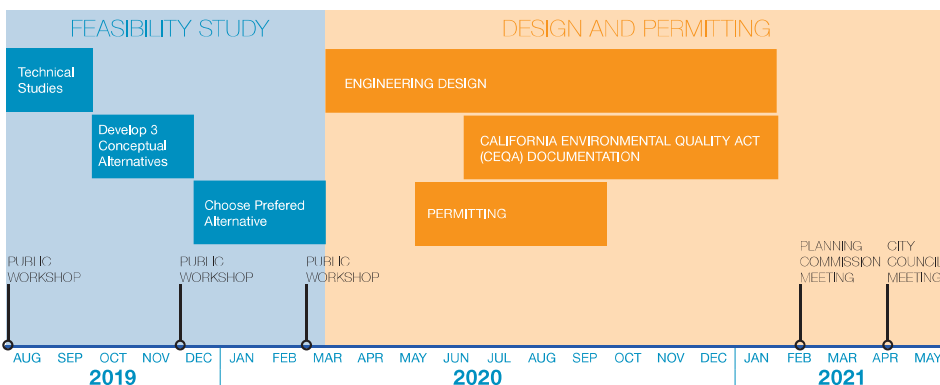


PHASE 1: PLANNING AND DESIGN

(currently funded through State Coastal Conservancy grant)

- Establish a community vision
- Assess feasibility, opportunities, & constraints
- Design, plan, & permit for implementation

PHASE 1: PLANNING AND DESIGN – KEY STEPS AND TIMELINE



PHASE 2: CONSTRUCTION

(future grants funds required)

GOALS FOR LOMA ALTA SLOUGH

1. Loma Alta Slough is a resilient coastal wetland habitat with associated marine and terrestrial habitats
2. Ecological and physical processes at Loma Alta Slough are restored to maximize ecosystem benefits and support a dynamic and self-sustaining ecosystem over the long-term.
3. Loma Alta Slough is restored in a manner that promotes research, education, and community engagement in ways compatible with the restored ecosystem.

We want your input!

